

REETH & DISTRICT GAZETTE

ISSUE NO. 245

NOVEMBER 2016



*Your local news magazine
for the Two Dales.*

PRICELESS

First Thoughts . . .

What is it about time these days? It seems to pass by so quickly - and I don't think that this is just a sign of getting old, as young people will comment on the same thing. Perhaps it's just a symptom of modern day life and the speed with which we can communicate electronically. Everything is so much quicker it makes it seem as if time is passing more quickly.

And how is it when there are so many gadgets and technical innovations designed to save us time, that we seem to have less time than ever before? We are in such a rush these days to get things done, we no longer have time to sit down for meals, for example, but eat them on the go. (And when people do cook something, it is not with a view to sitting down with friends and enjoying a convivial meal; apparently it is to put a picture of the dish on Facebook to show 'friends' how clever they are. But that's another issue.)

Then again, maybe this lack of time isn't a modern phenomenon. Way back in 1973, Pink Floyd sang: *'Every year is getting shorter, never seem to find the time.'* While even earlier, in 29BC, Virgil wrote: *'tempus fugit.'*

I must admit, I have a pretty good view from my office window. Visitors in the shop often comment on the scenery and ask if I take it for granted; but how can you when it changes so often? Like Dave on Page 4, I never tire of looking out of the window. Maybe we need to do that more often. As W. H. Davies wrote over a hundred years ago:

*A poor life this if, full of care,
We have no time to stand and stare.*

MAC

January Deadline

Please Note: Due to the Christmas / New Year Holidays, the deadline for the January 2017 edition of the Gazette is

December 2nd.

**YOUR LOCAL TRADITIONAL
CHIMNEY SWEEP**
NACS & HETAS qualified & registered

**We set ourselves very high standards
and take every care in your home**

We offer a comprehensive service
All types of chimneys swept to relevant BS Std.
Bird guards & cowls, etc. supplied & fitted
Advice freely given, problems solved
Carbon monoxide detectors
Chimney pots replaced

01765 688078
www.sweepinthedales.co.uk

Stove Refurbishment
Stove servicing and repair
Solid fuel stove installations
Stainless steel flexible linings
Stainless steel rigid flue systems
Only high quality components are used

HETAS qualified & registered installer

STOVE INSTALLATION



REETH AND DISTRICT GAZETTE LTD

GAZETTE MANAGEMENT TEAM

Chairman: James Alderson

Greenways, Grinton, Richmond

DL11 6HJ

Tel: 01748 884312

E-mail: chairman@reethgazette.co.uk

Secretary: Sue Alderson

Holme View, Low Row, Richmond,

DL11 6PE

Tel: 01748 886292

E-mail: secretary@reethgazette.co.uk

Editor: Martin Cluderay

Reeth Post Office, Reeth, Richmond

DL11 6SE

Tel: 01748 884201

E-mail: editor@reethgazette.co.uk

Treasurer: Andrew Bedford

Glory Be, Blades, Richmond, DL11 6PS

Tel: 01748 886974

E-mail: treasurer@reethgazette.co.uk

Subscriptions: Elsie Whitehead

Tel: 01748 884132

E-mail:

subscription@reethgazette.co.uk

Distribution: Trevor Brown

The Cottage, Healaugh, Richmond,

DL11 6UA

Tel: 01748 884111

Team Member: David Trusson

Email: rdg@reethgazette.co.uk

Published by

The Reeth & District Gazette Ltd.

Company Number: 06541854

c/o The Company Secretary

Andrew Bedford, Glory Be, Blades

Richmond, North Yorkshire DL11 6PS

Tel./Fax: 01748 886974

E-mail: treasurer@reethgazette.co.uk

No material may be reproduced in whole or in part without permission. Whilst every care is taken for accuracy, the publishers cannot be held legally responsible for any errors or opinions in articles, listings or advertisements.

ADVERTISING

For information on advertising and prices, please contact the treasurer.

For advertising copy, please contact the editor.

The editor reserves the right not to publish any advert or article considered to be inaccurate or misleading

All articles or items for inclusion should be sent to the editor (E-mail: editor@reethgazette.co.uk) or left at Reeth Post Office.

Posting The Gazette

If you are posting a copy of this Gazette to a friend or relative, please note that it is **Large Letter** size and will cost **£1.20 second class**, or **£1.27 first class**. (Two standard first class stamps = £1.28)

Gazette Deadlines

The deadlines for the next two months are:

December issue: November 10th

January issue: December 2nd

PLEASE NOTE: We cannot guarantee that items submitted close to the deadline date will be included.

Just A Thought

If you try to fail and succeed,
which have you done?

COVER PICTURE

Taken by Vanessa the Postie

(Just before emptying it.)

But where is it?

Letters To The Editor

Driving On The Green

Now that the 'off season' (as far as tourists are concerned) is here, parking is less of a problem. More excitingly, it means that locals can once again take part in the traditional sport of driving right across the village green in Reeth, rather than using the roads around it.

I mean, think of the valuable seconds you can save by taking a short cut across the green. And you don't have to go all the way to the speed bumps at Skeeby to ruin your suspension - you can do it just by bumping up the kerb around the green.

Plus there is the added satisfaction, especially when the green has had a good soaking of winter rain, of seeing your tyre tracks imprinted in the grass. And if you can get a good wheel spin in, all the better.

Do spare a thought of gratitude though for the summer visitors whose contributions to the honesty boxes fund repairs to the green, enabling us locals to make a mess of it during the winter.

For those of you who may have missed the subtle undertones of sarcasm in this letter (which is

NORMAN F. BROWN CHARTERED SURVEYORS & ESTATE AGENTS

SALES - LETTINGS - MANAGEMENT

FREE 'NO OBLIGATION'

MARKET APPRAISAL

AVAILABLE UPON REQUEST

14 Queens Road, Richmond,

North Yorkshire, DL10 4AG

Tel: (01748) 822473/822967

www.normanfbrown.co.uk

probably the target audience) the request is quite simple: Please do not spoil the green by unnecessarily driving right across it.

Name & address supplied

Reasons To Be Cheerful

Some of Buddy Holly, namely *True Love Ways*; living in the Dales; looking out of my window when I get up; a pint of Abbot Ale (or Timothy Taylor) poured southern style; working in the garden on a sunny day; going to real rock & roll concerts at Croft; walking the dog; watching Grand Prix; and last but not least, having a loving, caring wife.

Dave Skinner

GREEN COMMERCE LTD.

Established for over 35 years

Best quality hardwood logs

Kindling sticks also available

Free Local Delivery

Call David Fenwick on

Tel: 01833 650151

Mob: 07921 317630



A.J. CLACHER LTD

Established 1961

PLUMBING & HEATING ENGINEERS

- Gas, oil and solid fuel central heating installations
 - All aspects of plumbing and gas installations
 - Boiler servicing and repair • Landlord Gas Safety inspections
 - Bathroom installations and Plumbing • Heat Pumps and Solar Heating
- Unit 38 Forge Way, Cleveland Industrial Estate, Darlington DL1 2PB

Tel. 01325 468372 • E-Mail info@ajclacher.co.uk

www.ajclacher.co.uk



IAN REYNOLDSON ELECTRICAL

For all your electrical needs

No job too small

Tel. 01748 886725

Mobile: 07814547339

Dales Reyno-Vations



General Building & Maintenance

Property renovations / Roofing

Kitchen fitting / Joinery

Bathroom suites / Tiling

Painting & Decorating

Patios / Landscaping / Ground maintenance

Free estimates / Insurance quotes

No Job too small

D Reynoldson

11, Place Hill, Reeth, Richmond

North Yorkshire, DL11 6SD

01748884309 / 07792458801

Email dave.reyno@btinternet.com

**James Peacock
Solid Fuel Merchant
Bainbridge**



Good quality fuels at competitive prices.
Deliveries to Wensleydale, Swaledale and
Coverdale.

No delivery too small.

Tel. 01969 650212/650465

Email:

james-peacock@btconnect.com

www.james-peacock.co.uk

**Remembrance Day
11th November 2016**

There will be a short Service at the
War Memorial, Reeth.

Please gather at the Memorial
at 10.50am.

**Remembrance Sunday
13th November 2016**

EVERYONE is invited to join in the
Parade starting at the Shelter, Reeth,
at 2.00pm

for a Service of Remembrance at
St Andrew's Church, Grinton,
commencing at 2.30pm.

Buses will be provided for the return
journey at approximately 3.15pm, as
there will be no parade back this year.

Tea will be served at
The Memorial Hall, Reeth,
at 4.00pm.

For further information contact:

IAN C SCOTT, SOLICITOR,
Clerk to Reeth Parish Council
ics@scottswright.com

34 Market Place, Leyburn,
N. Yorks DL8 5AP

Tel: 01969 622227 or 01748 823570

**Music Tuition for all ages with
www.colinbaileymusic.co.uk**

07711 211169

**Drums & Percussion; Vocals;
Piano & Keyboards; Music Theory;
'Get Musical' Workshops.**

REETH AND DISTRICT GAZETTE LTD

Latest Recommended Posting Dates For Christmas Delivery

HM Forces mail - (BFPO)

Monday 28th November: Airmail to
Operational BFPOs

Monday 12th December: Airmail to
Static BFPOs

International Standard (airmail) and International tracking signature services

Saturday 3rd December: Africa,
Middle East

Wednesday 7th December: Cyprus,
Asia, Far East (including Japan),
Eastern Europe

Thursday 8th December: Caribbean,
Central and South America

Saturday 10th December: Greece,
Australia, New Zealand

Wednesday 14th December: Czech
Republic, Germany, Italy, Poland

Thursday 15th December: Canada,
Finland, Sweden, USA

Friday 16th December: Austria,
Denmark, Iceland, Netherlands,
Norway, Portugal, Slovakia, Spain,
Switzerland

Saturday 17th December: Belgium,
France, Ireland, Luxembourg

UK Service

Tuesday 20th December: 2nd Class
and 2nd Class Signed For

Wednesday 21st December: 1st Class
and 1st Class Signed For

Thursday 22nd December: Special
Delivery Guaranteed

Friday 23rd December: Special
Delivery Saturday Guaranteed

Royal Mail Tracked

Wednesday 21st December: Royal
Mail Tracked 48

Thursday 22nd December: Royal Mail
Tracked 24

For more information, visit your local
Post Office branch,
which just so happens to be the
best post office in Swaledale.

REETH POST OFFICE . . . more than just a Post Office

Reeth, Richmond, N. Yorks DL11 6SE Tel 01748 884201

Post Office

No fee Cash Withdrawals
Banking Services
Travel Money & Insurance
Phone Top Ups
Health Lottery

Gift Shop

Gifts & Cards
Stationery
Toys & Games
Local maps
Walking & guide books
Photocopying

Cornershop

Beers, Wines & Spirits
Sandwiches & Pies
Milk, Dairy & Meat
Fruit & Vegetables
Cakes & Biscuits & Crisps

SERVING OUR COMMUNITY www.reethpostoffice.co.uk

Kim and Richard
Atkinson

WELCOME YOU
TO
THE BLACK BULL



REETH

The oldest inn in Reeth

Quality accommodation

Excellent food

(Very popular Sunday Carvery)

A fine selection of
Real Ales and Wines

And a warm welcome
Tel. 01748 884213

Born in November?

Who do you share your birthday with?

- 1 Gary Player, the harder he practised, the luckier he became
- 2 David Schwimmer, a friendly giraffe
- 3 Adam Ant, obdurate, unyielding, resolute, steadfast
- 4 Guy Martin, TV chef
- 5 Vivien Leigh, a scarlet woman
- 6 Johanna the Insane, Queen of Castile
- 7 Joni Mitchell, her father went off in a big yellow taxi
- 8 Roy Wood, a wizard
- 9 Alessandro Del Piero, okay footballer
- 10 Martin Luther, invented the Reformation
- 11 Cissie Charlton, Jack and Bobby's mum
- 12 Neil Young, had a heart of gold
- 13 Whoopi Goldberg, a nun
- 14 Claude Monet, impressionable bloke
- 15 Jimmy Choo, noise made by a train
- 16 Frank Bruno, know what I mean?
- 17 Martin Scorsese, directed a film or two
- 18 Anthony McPartlin, an ant
- 19 Meg Ryan, an insomniac
- 20 Edwin Hubble, a telescope
- 21 Goldie Hawn, ran a ballet school
- 22 Charles de Gaulle, he said 'Non'
- 23 Boris Karloff, a monster
- 24 Billy Connolly, ship welder
- 25 Joe DiMaggio, where has he gone? A nation turned its lonely eyes to him
- 26 Tine Turner, a private dancer
- 27 Bruce Lee, had a way with dragons
- 28 Berry Gordy, invented Motown
- 29 A footballer we can't name
- 30 Gary Lineker, a walker

Reeth Gazette Community Chest

This month's recipient is **Home-Start Richmondshire**. Here's what they have to say:



Home-Start Richmondshire was established in April 2010. It is a grass roots organisation - founded by local people, with volunteers from the local community supporting local families. We work with families and volunteers from across Richmondshire including those in the Two Dales.

We are part of the leading family support charity in the UK and we help families where there is a child under the age of 5. Volunteers, who are all parents themselves, offer 2-3 hours each week of practical and emotional support in the family's home. We may be supporting a single parent family; or a family with illness, disability or additional needs; or parents who are inexperienced; or where there is poor mental health or isolation. What we are is a parent helping a parent through a difficult time.

Volunteers are the lifeblood of Home-Start and we hope that we value them highly. We look for people who are compassionate, recognise that we are not all the same and have a

willingness to support others. Each volunteer attends a Preparation Course - a very interesting and thought provoking course that prepares you to be a Home-Start volunteer. Being a Home-Start volunteer means being confidential about everything to do with the family you are supporting.

After the training, when supporting a family, the coordinator meets with you for a one to one support meeting at least every 6 weeks, more if needed and she is always available at the end of the phone to offer support and advice.

There are also Volunteer Support groups held every 3 months - these are an opportunity to get together with other volunteers.

If you are interested in supporting our charity as a home-visiting volunteer, Trustee or fundraiser then please visit our website or give us a phone. Contact: **Julie Teasdale**, Coordinator, tel: **01748 850079**; or www.homestartrichmondshire.org.uk



If you'd like your group to benefit, email the editor@reethgazette.co.uk with a little bit about what it does. The management board of the Gazette will select one group each month to receive a donation. If yours is selected, you'll be asked to write an article of 300-400 words to appear in the Gazette, about your organisation.

Community Chest 2017

Such has been the success of the Community Chest that the management board has decided to continue it for another year. The process couldn't be simpler: just send us an e-mail explaining why you think your group is a deserving cause. Unfortunately, if you have received an award in 2016, you will not be considered in 2017 - but maybe in 2018.

P.A.DOOLEY

**Plumbing &
Heating
Engineers**



- Installation of Energy Efficient Heating Systems
- Bathrooms Fitted
- General Plumbing
- Gas Fires/Stoves Installed

Tel: **01969 667958**
Mobile: **07890 021829**

CORGI
Registered

CALOR
LPG GAS
Installers

OFTEC
OIL Installers



**The Farmers Arms,
Muker, Upper Swaledale**

The heart of spectacular walking country

*

Serving good pub food everyday
12pm - 2:30pm and 6pm - 8:30pm

Well-kept local real ales

*

Dog & muddy boot friendly
Open fire & stone flagged floor
Holiday apartment (sleeps 2)

Tel: 01748 886297

www.farmersarmsmuker.co.uk

Dales Computer Services

For all your computer needs



Carol Haynes
Lairdwood Cottage
Carperby
Leyburn
DL8 4DB

Repairs - Upgrades & Maintenance
Software & Hardware problems

Home & Small Office Networks
Wireless and Wired Networks with shared internet

Website Design, Hosting & Email
Ongoing support or self-maintenance.
Hosting includes CPanel, PHP, MySQL support.

Affordable Onsite & Remote Support
for PCs and Mac computers
(remote requires working internet connection)

Monthly articles in local publications
Established Dales Business

www.dalescomputerservices.com
Tel: 01969 663798 or 07891 371280

R. & W. GIBSON & SON Ltd.

**CERAMIC WALL
& FLOOR TILERS**

SHOWROOM NOW OPEN

Monday - Friday: 9.00 am - 4.30pm

Saturday: 10 am - 1 pm

(or by appointment)

At Borough Road,

Gallowfields Trading Estate

DL10 4SX

Tel. 01748 - 822682 (Home)

Tel. 01748 - 821909 (Showroom)

"We cover the Dales"



It Pays To Stop And Think

If you receive a phone call, text or email asking you to hand over personal or financial information, you need to take a moment to reflect and step back from the situation.

Yes, even if they say they're the bank, police or another trusted organisation, you still need to take the time to stop and think about what's really going on.

Because, deep down, you probably already know the basic rules on how to beat financial fraud - you just need to take a deep breath and stay calm to remember them...

One: Never disclose security details, such as your PIN or full banking password.

Banks and other trusted organisations will never ask you for these in an email, on the phone, by text or in writing. Before you share anything with anyone, stop. Then pause to consider what you're being asked for and question why they need it. Unless you're 100% sure who you're talking to, don't disclose any personal or financial details.

Two: Don't assume an email or phone call is authentic.

Just because someone knows your basic details (such as your name and address or even your mother's maiden name), it doesn't mean they are genuine. Be mindful of who you trust - fraudsters may try to trick you and gain your confidence by telling you that you've been a victim of fraud. Fraudsters often use this tactic to draw you into the conversation, to

scare you into acting and revealing security details. Remember, fraudsters can also make any telephone number appear on your phone handset, so even if you recognise the number or it seems authentic, do not assume they are genuine.

Three: Don't be rushed or pressured into making a decision.

Under no circumstances would a bank or organisation force you to make a financial transaction on the spot; they would never ask you to transfer money into another account for fraud reasons. Remember to stop and take time to carefully consider your actions. A bank or trusted organisation won't rush you or mind waiting if you want time to think.

Four: Listen to your instincts.

If something feels wrong then it is usually right to question it. Fraudsters may lull you into a false sense of security when you are out and about or rely on your defences being down when you're in the comfort of your own home. They may appear trustworthy, but they may not be who they claim to be.

Five: Stay in control.

Have the confidence to refuse unusual requests for personal or financial information. It's easy to feel embarrassed when faced with unexpected or complex conversations. But it's okay to stop the discussion if you do not feel in control of it.

Take Five is a national campaign that offers straightforward and impartial advice to help everyone protect themselves from preventable financial fraud. For more information about Take Five visit:

takefive-stopfraud.org.uk



Sarah's of Reeth

07875 926946

Hair colouring

Hair cutting

Reflexology

Aromatherapy

Indian Head Massage

Facials

Raindrop Treatment



Reeth and Mobile

07875 926946

Kearton Country Hotel, Thwaite



Tea Rooms Restaurant & Bar

Family run hotel
Large spacious restaurant
with stunning views over Kisdon

Tea rooms & licenced restaurant open daily

11am – 5pm Mon to Fri

10am – 5pm Sat - Sun

Lunches served 12 - 4pm

Three course home cooked evening meals

Join our guests & experience our warm friendly hospitality.
Evening meal reservation only

Real ale & fine wines

Tel **01748 886277**

Email:

info@keartoncountryhotel.co.uk

www.keartoncountryhotel.co.uk

WELCOME TO
Swaledale

S A B F

The Swaledale & Arkengarthdale Business Forum

- Set up to create a more successful business environment
- Marketing our two Dales to visitors and other businesses
- Join us to help every local business flourish
- Help protect our community, jobs and quality of life

Contact Michael Meacock, 886763, Judith Dower, 886366.

Visit our website www.swaledale.net

Packed with information for visitors and locals alike,
including a comprehensive services directory



Job Opportunities

We are recruiting for full and part-time vacancies

Experienced Waiter / Waitress

Must be very presentable and have a number of years hospitality experience – very competitive pay rate available for the right person, with the right level of actual ability

Housekeeping Staff / Kitchen Assistants

Excellent pay rates for capable, hardworking individuals

Waiter / Waitress

Must be energetic, enthusiastic, highly presentable and willing to learn

Tel: **01748 884292**

Email: enquiries@theburgoyne.co.uk

Address: The Burgoyne Hotel, Reeth, Swaledale, North Yorkshire DL11 6SN



ARBORES
TREE SERVICES

All aspects of tree work carried out by fully insured and NPTC qualified tree surgeons.

Tree removal, pruning, planting, hedging and stump grinding.

Contact Tom Hollingworth

07929322227

www.arborestrees.co.uk

Own your own piece of Swaledale...

SWALEVIEW
PARK

From only £28,000

- The ONLY holiday homes for sale in Swaledale
- Beautiful and unrivalled riverside location at the head of Swaledale yet minutes from Richmond
- Showhomes and Lodges available for viewing on the park
- All inclusive price including all furnishings
- Superb specification
- Open since 1946, Swaledale's longest established, family owned park



Affordable luxury in Yorkshire's National Park

Telephone 01748 823106

Showhome open daily from 9.30 to 5pm

www.swaleviewpark.co.uk

info@swaleviewpark.co.uk



Reeth Community Orchard

The wild flower meadow in the Orchard, in spite of its name, takes quite a lot of attention in order to stop some plants taking over to the detriment of others. One of the worst is vetch (*vicia sepium*) which is a real thug.

As the cowslips, wild daffodils and bluebells started seeding on 3rd June, the meadow was cut with our special mower and the hay was removed. It was hoped that this would subdue the vetch before it started spreading its seeds. As the grass grew it allowed the oxeye daisies, wood cranesbill and more red clover to show through.

The meadow was cut again at the end of August and raked hard and yellow rattle seed sown onto some bare ground which should stop too much grass growing and allow more of the wild flowers to come through. With the help of some local schoolchildren we stamped the yellow rattle seed into the ground.

A couple of weeks later, Tanya St Pierre from Meadow Link came and helped to sow seeds from the meadows at Muker. These were Betany, Rough Hawkbit, Selfheal and Ladies Bedstraw.

The meadow will continue to be mown as necessary until the yellow rattle begins to come through and we look forward to the meadow again delighting us next year.

Janice Wilkinson

p|a|a|d architects | designers

Architects Practice

New to the Dales
Over 30 years experience
We offer

Planning Advice + Applications |
Surveys | Technical Drawings |
Building Regulations Advice |
Building Control Submissions |
Contract Management |

Contact | **Alex Pealing**
Chartered Architect.
| **Jacqueline Pealing**
B.Eng.(Hons) Structural Engineer

T: 01748 886767
M: 07711 064287
E: alex@pealingassociates.co.uk

p|a|a|d architects | designers

Marwood Mellor Yarn Company

Artisan Designer Maker Rosalie Marwood Mellor
is now at Unit 8 Silver Street, Dales Centre,
Reeth, DL11 6TG.

Fun workshops in spinning, weaving & millinery
to City & Guilds level 2. Weekly "SEWING BEE"

Luxury hand spun wool & hand woven
accessories & gifts from the
fleece of our local sheep.

www.marwoodmellor.co.uk

LEYBURN PETS LTD

Pet Shop & Wild Bird Feeding Centre

Everything you need for the animal
in your life!

73 High Street, Leyburn
01969 622953

**Project Tidziamale*
A Special Appeal For
Sewing Machines**

You may know that educating girls in developing countries leads to better family health and economic prospects. Keeping them in school is essential to that process, but girls living in poverty do not have access to - and cannot afford - the cost of sanitary protection. This means that they drop out of school or loose about a quarter of their schooling.

This project will give local health and education staff the skills and equipment to become the trainers of groups of local mothers and grandmothers to make reusable sanitary protection. This will be given free to girls when they reach the menarche.

To make this possible we will need many, many donations of hand and electric machines - you can't rely on there being electricity - as well as scissors, threads and so on. Donations are checked and repaired if they need an overhaul or parts are recycled.

Based in Thyolo District in Malawi - one of the poorest areas in one of the ten poorest countries in the world - we plan to train up to 20 trainers in 2017 who, in turn, will enable local groups of women to make reusable pads for local schoolgirls. After 5 years the project should be self-sustainable through, for example, sales in Community Clinics to local women who can afford them.

If you can help in any way, please do. This is one way you can help even just a few of the most disadvantaged girls in the world.

Please contact **Andrew Stones** on **01748 884397** if you can give a donation of a machine or sewing notions, such as spare machine needles and thread, or good fabric scissors.

For more information about this appeal please contact **Heather Roberts** heather.robert.myemail@gmail.com

* *The meaning of this Chichewa word is "Let us take care of ourselves as girls"*

St Andrew's Church, Grinton

A service of light and music, after the style of Taize, will take place at

St Andrew's Church, Grinton on

Sunday 6th November at 6.00pm.

This reflective service with light, readings, prayers, singing and music will also include times of silence.

Everyone is welcome.

**BELLEGREEN
COTTAGE**

**Beautiful holiday cottage
overlooking Reeth Green**

- Superbly equipped - sleeps 7
- 4 bedrooms, 2 bathrooms
- Open fire - all fuel included
- Free wifi
- Private parking
- Dogs welcome

**Contact Lyn on
0115 922257**

www.bellegreen.com



**An opportunity
to lead a local
team of
volunteers**

Scouting in Richmondshire currently provides adventure and enjoyment for over 400 young people. In recent years, Scouting has been re-established in Leyburn and Hawes, providing opportunities for young people in these communities.

These activities are provided in Barton, Catterick, Richmond, Swaledale and Upper Wensleydale by volunteer leaders. This leadership team is led and supported by a District Commissioner. The current D.C. is to retire soon, and a replacement is being sought.

Whilst there will be opportunities to be involved directly with young people, the role is primarily one of management and providing support to adults. Previous Scouting experience is not essential, and training will be available. The role is open to female and male applicants.

If you might be interested, or if you would like more information please contact Andrew Bedford at andrew@bedfords.me.uk / 01748 886974 or Paul Adamson at jandpra@btinternet.com / 01969 503 by 18th November 2016.

Further information about Scouting is available at www.scouts.org.uk/get-involved

BRAESIDE COTTAGE

Overlooking The Green, Reeth

Sleeps 8

Three bedrooms; two bathrooms

Private courtyard Beautiful cottage garden

www.braesidereeth.co.uk

or Tel 0114 2467599



KINGS HEAD
PUBLIC HOUSE

Mondays to Thursdays
20% off your dinner bill or
a free bottle of wine for
two people*

§

Sunday evenings
Join us for the BIG QUIZ

§

Fridays
Happy hour 6pm-7pm

*A proper pub offering a warm
welcome, great food and
Yorkshire ales to friends and
visitors from near and afar*

Gunnerside, Swaledale
DL11 6LD

01748 886261

www.kingsheadgunnerside.com

*Valid 31st October to 31st March except
19th to 29th December 2016



Swaledale Mountain and Cave Rescue Team

A busy few weeks with 13 incidents for the team last month, which means **we have now passed the 2015 total of 61 incidents** - and there are still 3 months to go.

06/10/2016: (62) 14.00hrs Team called out this afternoon to assist the ambulance service with the rescue of a walker who had fallen & sustained a chest injury near Aysgarth Falls. Treated & evacuated to the road ambulance.

04/10/2016: (61) 13.30hrs Team called by the Police to search for a missing person in the Richmond area. The casualty was located by our search dog & search teams, treated by the team & recovered to the Police.

03/10/2016: (60) 10.30hrs Team called by the Police to search for a missing person in the Coverdale area. While en route, the missing person turned up safe.

01/10/2016: (59) 16.30hrs Team called by the Police to rescue a

motocross rider who had become lost following a fall into a gill. Located by the team & recovered to safety.

29/09/2016: (58) 11.30hrs Team called by the Ambulance service to rescue a collapsed walker near Muker. The team, heli med & ambulance crew all attended, but were unable to resuscitate the casualty. The team transported the casualty from the fell to the Police.

28/09/2016: (57) 17.30hrs: A small number of team members were called out to rescue a local Gamekeeper's puppy from pothole near Walden. Alisa the dog was retrieved and reunited with her owner after a tight abseil down a 40ft hole

27/09/2016: (56) 21.45hrs: Team called by Kirkby Stephen MRT to assist in an ongoing search for a member of a shooting party lost high on the Northern Pennines. 10 Mountain Rescues teams searched through the night in poor weather. After 20 hrs of searching the casualty was located safe & well.

25/09/2016: (55) 17.45hrs: Team called by Cave Rescue to send a small caving team to support an ongoing incident underground. Person recovered safely without our assistance.

24/09/2016: (54) 09.00hrs: The team

Stewart Teale

Landscape Gardener

All aspects of hard landscaping

General garden maintenance

Over 20 years experience

For a free estimate Tel:

01748 884705 – 07782849379

S.J.R Plumbing Services

For all of your domestic

Plumbing requirements.

C & G/Advanced C & G Qualified

Reliable With Very Competitive Rates

Based in Reeth

01748-884036

Or 07977-297563

REETH AND DISTRICT GAZETTE LTD

provided safety cover for the final Dales Trails race, 40km this time. The usual bumps & scrapes deal with.

22/09/2016: (53) 17.30hrs: Team called to rescue a walker with an ankle injury in Mill Gill, Askrigg. Alongside the Ambulance crew we treated & evacuated to the road.

18/09/2016: (52) 20.00hrs: The team were called by the Police to rescue an injured walker in Gunnerside Gill.

18/09/2016: (51) 16.00hrs: The team were called by the Police to search Fremington Edge for a missing person, while the team leaders were planning the search the person turned up safe.

14/09/2016: (50) 20.00hrs: The team where called by the Police to rescue 2 sheep stuck on the southern side of Buckden Pike. As it's on the boundary of us & Upper Wharfedale, we asked UWFR to rescue them as it was closer

for them.

Fundraising update

Thanks to the following for their ongoing support:

- Butt House B&B, Keld £154.97.
- Stephen Jefferson who ran the length of Offas Dyke in Wales to raise £263.
- Alderson Family History Group £240.

If you would like to help please contact **Jill 01748 886807**. Or drop an email to secretary@swaledalemrt.org.uk or a message via our Facebook page.

Finally, the nights have drawn in so don't forget to take a torch if you go out.

DON'T FORGET IF YOU NEED MOUNTAIN OR CAVE RESCUE, call the POLICE on 999. They will call us & an ambulance (if required).

www.swaledalemrt.org.uk

SWALEVIEW COTTAGE

Beautifully furnished, four bedroom single storey holiday home on the banks of the river Swale, yet only 5 minutes from Richmond.

Lovely location for birds and wildlife

Sleeps 2-6

Short breaks from only £270.

Sorry no pets

Please call Andrew or Eileen Carter

01748 823106

FATSHEEP



from the Dales

A Fantastic Little Gift & Craft Shop On The Green At Reeth

Everything we sell is made in the

Yorkshire Dales.

Including Reeth's own Swaledale Chocolate Company We are also home to the famous Glendale Ginger

01748 880189

www.fatsheep.co.uk

REETH AND DISTRICT GAZETTE LTD

Let's Get Lyrical

So, did the eyes do it for you?

- I met her in a club down in old Soho - **The Kinks, Lola**
- I was born in a crossfire hurricane - **The Rolling Stones, Jumping Jack Flash**
- I thought love was only true in fairy tales - **The Monkees, I'm A Believer**
- I'm goin' back to New Orleans To wear that ball and chain - **The Animals, House of the Rising Sun**
- I think it's gonna be a long long time - **Elton John, Rocket Man**

There was a record number of entries this month and so the tie-breaker came into play. The Curry Boys of Reeth came close, but perhaps forgot about the re-issues. So the winner this month is that man Thorogood again - who does have the advantage of age. His guess of 70 was

the closest to the official answer (according to my copy of the Virgin Book of British Hit Singles) which is 73. £5.00 to the charity of his choice.

This month, well for all you Bruuuuce fans out there, I reckon it's about time we had some Springsteen lyrics. These are the opening lines of which songs?

- Madman drummers, bummers and Indians in the summer with a teenage diplomat
- In the day we sweat it out on the streets of a runaway American dream
- Got a wife and kids in Baltimore, Jack, I went out for a ride and I never went back
- Born down in a dead man's town, the first kick I took was when I hit the ground
- I get up in the evening and I ain't got nothing to say
- The screen door slams

The tiebreaker: How many Grammy awards has he won?
MAC

PATRICIA

DAIRY COTTAGE, LOW ROW

Experienced in both men's and ladies' sewing alterations.

Most sewing tasks undertaken

'Will come to you'

01748 886905

Langthwaite - Arkengarthdale

RED LION INN

Free House

Real Ales – Bar Snacks

Books & Maps

Tel. 01748 884218



ANDY MALTON LTD – REETH GENERAL BUILDING CONTRACTOR



Dry lining/ plastering/ ceiling work

Roofing/ pointing/ guttering work

Most building repair work carried out

Free estimates - No job too small

01748 884621 / 07837645104

amalton56@fsmail.net





**Ballet for boys and girls
from the age of 3 years.**

**Modern Dance/Jazz
for children and teenagers.**

Tap for children and adults.

**For more information please
contact:**

Janet Seymour LRAD

Tel: 01748 884 677

Mobile: 07971 282 566

www.swaledance.co.uk

THE PUNCH BOWL INN

Open all day 11.00am until 11.00pm

Delicious food served all day

Evening Mirror Menu

6.00pm - 9.00pm Monday - Friday

5.00pm - 9.00pm Saturday

6.00pm - 9.00pm Sunday

Traditional Carvery

Every Sunday **12.00pm - 2.30pm**

STEAK NIGHT

1st & 15th November &

6th & 20th December

SPECIALITY NIGHT & QUIZ

Thursday 17th November

For further details or to reserve a table

Telephone: (01748) 886233

www.pbinn.co.uk

Geoff Braithwaite

Property Maintenance

Painting & Decorating

Kitchen & Bathroom Fitting

Wall & Floor Tiling

Pointing & Patios

General Repairs

Fast, Friendly,

Reliable Service

Quality work guaranteed

Tel : 01748 886783

THE C.B. INN

Arkengarthdale

Outstanding fresh food served in a warm & friendly atmosphere.

19 en-suite bedrooms with amazing views.
Available for dinners, weddings or meetings.

Lunch

Mon - Sun **12.00pm - 2.30pm**

Roasts available on Sundays

Evening Mirror Menu

6.00pm-9.00pm Monday - Friday

5pm - 9pm Sat & **6pm - 9pm** Sun

Menu Classics only £11.95 served

every evening along with our
normal mirror menu.

Early Bird Menu - 5.00pm till 7.00pm

Friday 18th Nov. & 16th Dec.

2 courses £11.50 3 Courses £15.00

For further details or to reserve a table

Telephone (01748) 884567

Website: www.cbinn.co.uk

Reeth Memorial Hall Events

Friday 2nd December at 8.00pm: The Emily Smith Christmas Show. Emily Smith (Scots Singer of the Year 2014) brings her Christmas show to England after sell-out concerts in Scotland for the past 5 years. Based on her Songs For Christmas album the result is songs that inspire, comfort and celebrate Christmas and the winter season. She is joined by multi-instrumentalists, Anna Massie and Jamie McClennan. Tickets £14 (£16 door).

Saturday 3rd December at 7.30pm: North Country Theatre. The Wish House - a comedy of rural superstition and urban myth - a story of fierce, insane, possessive love . . . (and dark goings-on down on the farm). Based on a short story by Rudyard Kipling. Tickets £10.

Tickets available from **Reeth PO** or phone **John Little (01748 884759)** or visit: **www.reethmemorialhall.co.uk**

Tickets half price for under 16s.

John Little

Muker Indoor Bowls Club

A friendly, fun group. No experience needed, come along and give it a go!

- When? Wednesdays
- Time? 7.30 - 9.30
- Where? Muker Public Hall

For more details contact Sue Pellatt, secretary on **01748 886963**; or e-mail: **suepellatt@hotmail.com**

Muker Indoor Bowls Club



Muker Public Hall
Every Wednesday
7.30pm to 9.30pm
New members welcome
No experience needed
Just come along

Contact Secretary
Mrs Sue Pellatt,
01748 886963
suepellatt@hotmail.com

Carvoeiro, Algarve, Portugal

Spacious well-equipped ground floor apartment, sleeps 5.

Quietly situated on a small low-rise development with five pools.

Within strolling distance of this vibrant, friendly village with its lovely beach and lots of excellent restaurants.

Golf, tennis, walking or just lazing by the pool.

Wood burning stove for cosy winter lets.

Please contact Lee on 01748 884473 for details.

Property Maintenance & General Building

Building work & property maintenance undertaken

Plumbing, tiling, plastering

Kitchen & bathroom fitting

Joinery works

Small jobs welcome

Free No Obligation estimates

Also detail plans prepared for planning applications

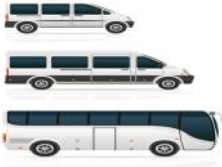
Contact Gary

Tel. 01748 886691 / Mob. 07896 147207

E-mail g_staines@sky.com

REETH AND DISTRICT GAZETTE LTD

HARKERS & COACHES



Mini Buses & Coaches up to 35 Seats

&

Private Hire Taxis

Tel: 01748 884533

Mob: 07703 559959

Email: harkerscoaches@hotmail.com

We are a family run business offering reliability and
compensative prices

PS & FM Terry – Leholme, Reeth DL11 6SF

Hudson House

Rooms for hire

Suitable for meetings, lectures, talks,
training or social events.

The Meeting Room - maximum of 30 people.

The Meeting Place (evenings only) – maximum
of 10 people.

Access to PCs, Internet, printer,
photocopier and laminator.

The Orchard Gallery for hire

Suitable for exhibitions of paintings,
photographs and other artwork.

Own entrance through the garden.

Sales can be handled for you.

For prices (special rates for community use),
bookings or more information please contact

Jill May on 01748 884 485 or

admin@hudsonhouse.info

“Please use this valuable community asset”



Ginger Tree

Holistic Health & Beauty

Kathy Scott of
Ginger Tree Health & Beauty
is at

Reeth Medical Centre on a
Wednesday morning for
Massage, Reflexology &
Hopi Ear Candling

Call Kathy direct to book
01748 889350 or 07530 602209

www.gingertreebeauty.co.uk
salon@gingertreebeauty.co.uk

FB: [gingertreebeauty](https://www.facebook.com/gingertreebeauty)

NORTHERN WALLS

DRYSTONE WALLING

& LANDSCAPING

Master Dry Stone Waller

Former National Trust

gardener with 20 years

experience

City and Guild Certificate in

Horticulture

www.northernwalls.com

Tel 0795 148 1239

2 Dales Action for refugees

Following last year's highly successful appeal to help very needy, lonely people who are refugees in such places as Tees Valley, we are hoping to repeat the exercise again this year.

Once again we are looking for the following items: Toiletries, woolly hats, gloves, toys for young children and other Christmas gifts. (No toy weapons please.)

If you are able and willing to help in any way please contact any of the following:-

- Richard Good 884353
- Joan Graveson 886470
- Lee Lowther 884473
- Chris Watts 886202

Items can be dropped off at Hudson House, Reeth from 5th December 2016 10.00 - 15.00 hours.

If you are able to wrap the Christmas gifts and mark them i.e., suitable for young girl or boy, or general, it would be greatly appreciated, if not, don't worry as we have many willing volunteers.

Your generosity last year was overwhelming - to see the faces of the recipients of these gifts was very moving - and you did a great job helping others. Please help us again this year.

Chris Watts

OVERTON HOUSE CAFÉ & SHOP, REETH

Light meals and home baking.

Eat in or take out. Orders taken.

Closed Mondays (except Bank Holidays) and Thursdays

01748 884045

www.overtonhousecafe.com

North Riding Dales LVA Annual Charity Bike Ride 2016

As the sponsor money, from our charity bike ride last June, is now coming in quite nicely, we are asking for the local groups in Wensleydale, Arkengarthdale and Swaledale to apply for any funds that may be available.

All applications will be considered on their own merit. The presentation of the awards will be at the end of January 2017. This is to allow for any 'last minute' money to be collected.

Can requests be sent via the post to Angus McCarthy, Secretary NRDLVA, c/o The Fountain Hotel, Market Place, Hawes. DL8 3RD

Angus McCarthy
enquiries@fountainhawes.co.uk

WANTED - Customers, no previous experience necessary, at:

DALE FARM TOYS & BOOKS

Dales Craft Centre, Reeth DL11 6SP

- Equestrian, Country, General, Children's & Local books.
- Specialists in signed copies
- Gifts, stationery & cards
- Extensive range of quality toys - Bruder, Britains, Breyer, Schleich, Ride on Toys & much, much more.

Tel: 01748 884909 / 07790 480211

Email: info@equestrianbookfair.com

Web: www.equestrianbookfair.com



KARL LONGDEN PLUMBING

Reeth, North Yorkshire
karllongdenplumbing@yahoo.com
Tel. 01748 880364
Mob. 07969 329893



24 HOUR CALL OUT SERVICE



Scenic Breaks - Luxury Holiday Lets



www.swaleviewpark.co.uk

Brand new luxury static caravan for holiday lets. Warm and welcoming, 2 bedrooms, an en-suite double and a twin.

Complete kitchen with fridge freezer, dining area, lounge featuring an electric fire, TV with DVD & full central heating.

Wi-Fi available.

A quiet site ideal for exploring Swaledale and its surrounds, with river walks plus Richmond, Harrogate, York, Thirsk and Ripon all nearby. Also within reach of Whitby, Robin Hood's Bay and the East Coast.

Contact: Swaleview Caravan Park, Reeth Road, Richmond, North Yorkshire, DL10 4SF
Telephone: 01748 823106
Email: info@swaleviewpark.co.uk
Web: www.swaleviewpark.co.uk



MEMBER OF
THE SMAE INSTITUTE

Swaledale Footcare

Meg Squires MCFHP MAFHP

Home Visits Including:

Toenail Cutting

Corn Treatment

Removal of Hard Skin and Calluses

Treatment of Thickened and Fungal Nails

Phone Reeth: 01748 884795 or Mobile: 07929065602

Email meg.e.squires@gmail.com

Member of the British Association of Foot Health Professionals



A Fact To Help You Lose Weight

The average chocolate bar has 8 insects' legs in it.

REETH AND DISTRICT GAZETTE LTD



The Charles Bathurst

Christmas at the CB Inn

Surrounded by beautiful Dales countryside - the ideal place for a celebration with friends, family and colleagues.

Enjoy our delicious Christmas menu, packed with seasonal delights.

Christmas Party dates:
2nd, 3rd, 10th,
16th & 17th December.

Prices from £70 per person includes 4 course dinner, disco, bed and breakfast.

The Charles Bathurst Inn, Arkengarthdale, Richmond, North Yorkshire, DL11 6EN
Tel: 0333 7000 779 • www.cbinn.co.uk



The ethical way to invest locally

 **Darlington Credit Union**

 **Money Works**
Make it work for you

Where: Hudson House, Reeth - 10am-12pm
When: Every 1st and 3rd Friday of the month
Contact: emma@darlingtoncreditunion.co.uk or 01325 529829 for more details

To Rent

1 Bedroom Bungalow

Langthwaite, Arkengarthdale

Please contact Peter on

07966 177160

email:

glendarichardson77@gmail.com

VICTORIA DESIGN GROUP

Consulting Civil &
Structural Engineers

Tel: 01748 886717

All design work undertaken, whether your project is large or small.

Also structural surveys

www.vdg.co.uk

REETH VILLAGE STORE

We supply a wide range of items including:

locally baked bread, pastries, cakes,
fresh fruit & vegetables, dairy produce, soft drinks,
ice cream, household goods, confectionery, tobacco and greeting cards.

Electronic phone card top up and debit/credit card facilities.

A fine selection of wines & spirits.

Daily and weekend papers.

Opening Hours

Mon-Fri 7am-7.30pm

Saturday 7am-7pm

Sunday 8am-4pm

Tel: 01748 884552



Calling All Ex-Footballers

Would you like to start playing again? Would you like to get fitter and play gentle, non-physical 4 or 5 aside, one evening a week with like-minded people, on the MUGA in Reeth?

We need about 10 - 12 people who are interested in playing to form a group to play each week, perhaps starting in November. Nothing too serious, just a chance to re-live former glories, but at a slower pace. All ages welcome - even 60+ year olds like me.

If you are interested, give me a ring on **07846 291690**; or leave your details at the Post Office.

John Lloyd



Bonfire and Fireworks

Reeth village bonfire & fireworks display will be held on the village green on **Saturday, November 5th**.

The judging of the guys begins at 6.00pm, with the bonfire being lit at 6.30pm. The fireworks display begins at 7.00pm and a barbecue is available throughout the evening, run by the Swaledale Seedlings. Admission is free and a collection is taken for future events.

In the event of bad weather the fireworks display may have to be postponed to November 6th although the bonfire and barbecue will still go ahead on the 5th.

The Fireworks Committee

Upper Dales Family History Group

The new season of meetings began with a talk by Dawn Webster, curator of Kiplin Hall. Drawing on Kiplin's vast archive of documents, photographs and artefacts her talk dealt with the role of the house and its owners in times of conflict from the 17th century onwards, beginning with a piece of wood supposedly from the block on which Charles I was beheaded during the Civil War.

During the 18th century the hall was owned by the Crowe family. Christopher Crowe was commended for quelling a riot in Richmond in 1757 and received a commemorative piece of silver from the town's mayor. Some years later Robert Crowe started the Kiplin and Langton Yeomanry and Cavalry, a volunteer army in operation until 1813.

Kiplin then passed into the Carpenter family. John Delaval Carpenter was painted in uniform wearing a sword which is still in the house. Admiral Walter Carpenter joined the navy at 13 years of age and sailed in many different parts of the world between 1847 and 1896. Dawn had his medals and had also listed all the ships in which he served, many of which are recorded in photograph albums in the archive.

The next owner Sir Reginald Talbot fought in both the Zulu wars and the Egyptian wars between 1879 - 1885. Once again a portrait of him with a sword and helmet was verified with the same sword and helmet still at Kiplin. Letters between Reginald and his wife giving details of battles won and lost are in the archive.

In the 20th century Kiplin is

associated with the Talbots, particularly Bridget who worked with Belgian refugees before nursing wounded soldiers in Italy during the Great War and was rewarded with an OBE and the Italian Military Cross. During the Second World War she designed a flashing light which could be fixed to life jackets and is credited with saving many hundreds of lives.

At a later stage of the war the house was requisitioned for housing officers from Scorton airfield and records show that it was also used to store an alarming quantity of ammunition. One room at the hall has been left untouched to show its use at that period - minus the ammunition dump.

The next meeting is at 2.00pm on Wednesday, November 23, at Harmby Village Hall near Leyburn. The speaker is Dorothy Edwards on 'All my Goods and Chattels'. Dorothy is co-editor of the recently published 'Northallerton Wills and Inventories, 1666-1719'. The testators were mostly tradesmen in the town and the talk will show how descriptions of their houses and goods give a fascinating picture of the way of life in Northallerton in the late seventeenth century.

Tracy Little

'Not all that is presented to us as history has really happened; and what really happened did not actually happen the way it is presented to us; moreover, what really happened is only a small part of all that happened. Everything in history remains uncertain, the largest events as well as the smallest occurrence.'

Goethe

The Hair Salon



Arkengarthdale Road, Reeth DL11 6QT

We offer a wide range of advanced hairdressing services

Everyone welcome - including children

We stock Wella's System Professional (SP) hair care products in the Salon. They are a more personalised & specialist range that can only be stocked by hairdressing professionals.

If you have any concerns about your hair or scalp, feel free to call in the salon for our help and advice. We are very happy to help!

Open Tuesday – Saturday

Late night Wednesday

Tel: 01748 884627

HOLIDAY COTTAGES REETH

2 cosy holiday cottages situated just off the village green in Reeth.

Glenkobla sleeps 1-2 Cragside sleeps 4

Secure bike storage

Tel. **01748 884237**

E-mail: walkerg17@sky.com

SCIENCE TUITION

Dr Richard Sharp

Specialist Tutor For A Level Biology, GCSE Biology, Chemistry, Physics, Additional Science And Core Science.

Controlled Assessment Preparation

Very Reasonable Rates. Why Not Double Up

With A Friend At Same Rate?

sharpr1966@gmail.com

07943 715003 or 01748 884584



GET READY FOR WINTER!

Garden Furniture Covers, Frost Fleece, Log Baskets, Fireside Accessories, Logs & Kindling, Snow Shovels

PLANT TULIPS NOW!

Taylors Bulbs (4 for 3 offer)

FEED THE BIRDS!

'Red Barn' Premium Bird Food
(plenty of peanuts despite global shortage)

CHRISTMAS IS COMING!

In Store from early November:

Ornaments for the home

Tree decorations

Everlasting Wreaths

Gift Ideas:

Resin birds & animals

Garden decorations

Chainsaw sculptures

Bird tables & bird feeders

Glazed Planters

National Garden Gift Vouchers

From December:

Nordmann Fir Christmas Trees

Pot Grown Nordmann & Fraser Fir

Christmas Trees

Christmas Tree Stands

Gorgeous Fresh Foliage Wreaths

Holly Wreaths

Tel: 01969 625397

Station Yard, Harmby Road, Leyburn DL8 5ET

wensleydalegardencentre2015@gmail.com

www.wensleydalegardencentre.co.uk

Open 10am-4.30pm Tues -Sat & 10am-4pm Sun

Closed on Mondays

REETH AND DISTRICT GAZETTE LTD

Church Services November 2016

6th Nov	9.15 am	St. Mary's Muker	<i>Eucharist</i>
	10.30 am	Low Row URC	
	11.00 am	St. Edmund's, Marske	<i>Holy Communion</i>
	11.00 am	Holy Trinity Low Row	<i>Eucharist</i>
	11.00 am	Reeth Evangelical Congregational	
	2.30 pm	Gunnarside Methodist	
	6.00 pm	St. Andrew's Grinton	<i>Taize Service</i>
	6.30 pm	Reeth Evangelical Congregational	
13th Nov.	9.00 am	St. Andrew's Grinton	<i>Eucharist</i>
	9.30 am	St Michael's Downholme	<i>Remembrance Service</i>
	10.45 am	<i>St. Mary's Arkengarthdale Remembrance Service and laying of Wreath</i>	
	10.50 am	<i>Holy Trinity Low Row Low Row & Muker Remembrance Service</i>	
	11.00 am	Reeth Evangelical Congregational	
		St. Edmund's, Marske	<i>Remembrance Service</i>
	2.00 pm	Keld War Memorial	
	2.30 pm	<i>St. Andrew's Grinton Remembrance Service (Parade gathers at Reeth 2.00pm)</i>	
6.30 pm	Reeth Evangelical Congregational		

The Methodist Minister for the two Dales is
 Rev. Les Nevin,
 who can be contacted on
01748 823149 or by email:
 les.nevin@icloud.com

Rev David Levell minister of
 Reeth Evangelical Congregational Church
 can be contacted on
07582 575815 or by email through the
 church website at www.reethecc.co.uk

The Reverend Caroline Hewlett,
 Vicar of the Parish of Swaledale with
 Arkengarthdale,
 can be contacted on
01748 884706 or by e-mail at
carolinejhewlett@btinternet.com

Roman Catholic Services
 For information contact
 Father O'Neil on
01748 822175
www.stjosephsfx.co.uk

REETH AND DISTRICT GAZETTE LTD

Church Services November 2016

20 th Nov.	9.15 pm	St. Mary's Muker	<i>Holy Communion BCP</i>
	10.30 am	Low Row URC	
	11.00 am	Holy Trinity Low Row	<i>Eucharist</i>
	11.00 am	Reeth Evangelical Congregational	
	11.00 am	St. Edmund's, Marske	<i>Holy Communion</i>
	2.30 pm	Gunnerside Methodist	
	6.30 pm	Reeth Evangelical Congregational	
27 th Nov.	9.30 am	<i>St. Andrew's Grinton Eucharist with Thanksgiving for the installation of the 2 new bells</i>	
	9.30 am	St Michael's Downholme	<i>Holy Communion</i>
	10.30 am	Low Row URC	
	11.00 am	Reeth Evangelical Congregational	
	11.00 am	St. Edmund's, Marske	<i>Holy Communion</i>
	11.15 am	<i>St. Mary's Arkengarthdale Crib Service All families and children are especially welcome, please bring your Mary & and Joseph crib figures to join those in church for a blessing to start the preparations for Christmas</i>	
	2.00 pm	Keld URC	
	6.30 pm	Reeth Evangelical Congregational	
1 st Dec.	7.30 pm	Low Row URC	<i>Christians Together in Swaledale Advent Service</i>

Religious Society of Friends (Quakers)

Meetings are at Quaker House, 7 Grove Square Leyburn every Sunday at 10.30am. Additionally on the 2nd and 4th Sunday of every month at the Scout Hut, Quakers Lane, Richmond at 10.30am.

For further information contact Judith Calow on **01748 884320** or www.dalesquakers.org.uk

Actual Church Announcements

At the evening service tonight, the sermon topic will be "What Is Hell?" Come early and listen to our choir practice.
Remember in prayer the many who are sick of our church and community.

REETH AND DISTRICT GAZETTE LTD

Decorative And Fine Arts Society

Our next lecture is *Thomas Heatherwick: "The Leonardo da Vinci of our times"* and will take place on **Tuesday 8th November at 2.00pm** at the Middleham Key Centre.

Since the 1990s, Thomas Heatherwick has emerged as one of Britain's most gifted and imaginative designers. His multi-disciplinary approach to design, blending architecture, sculpture & engineering, is now in demand all over the world. It prompted Sir Terence Conran, who spotted his talent early on, to describe him as the da Vinci of our times.

The lecture explores Heatherwick's career from his re-design of the London bus to his proposed Garden Bridge across the River Thames.

It will be delivered by Anthea Streeter who studied Fine and Decorative Arts in London and Harvard University. She is a specialist in architecture and 20th century design.

We welcome non- members to all our lectures. They are held on the 2nd Tuesday of the month from October to June at the Middleham Key Centre. The cost is £8 per lecture.

It would be helpful to inform the Membership Secretary beforehand if possible, on 01765 635244, or rosalindhigson@btinternet.com.

Rose Cottage

Just off the village green in Reeth

Sleeps 4

Dogs welcome

Tel 01964 562239

Email: rosecottagereeth@gmail.com

OXQUE MEATS

Grass-reared Local Lamb For Sale

Butchered Locally

£65 a half / £130 whole

Also available: outdoor-reared rare breed pork

Phone Sarah on 07969 612413

Attention Landlords

LEGIONNAIRES' DISEASE

The law is clear that if you are a landlord and rent out your property (or even a room within your own home) then you have legal responsibilities to ensure the health and safety of your tenant by keeping the property safe and free from health hazards.

There is a legal duty for landlords to assess and control the risk of exposure to legionella bacteria.

A qualified and accredited assessor from Northern Energy Surveyors can complete the risk assessment on your behalf for just £75.00 plus VAT. For more information please call...

Tel: 01748 884207

Mob: 07530 617687



Email: info@northernenergysurveyors.co.uk

STUBBS ELECTRICAL

Your Local Electrical Service

- Rewires/alterations
- Showers/storage heaters
- Fire alarms/emergency lights
- Underfloor heating
- Fault finding
- Landlords' certificates
- PAT Testing
- Solar electric

Contact Stephen on:

T: 01748 822907

M: 07980 130014

E: stephen@stubbselectricaltd.co.uk

W: stubbselectrical.co.uk



Microgeneration
INSTALLER

M. GUY - PLUMBING

For all your plumbing requirements

AGAS & RAYBURNS SERVICED

Tel: 01748 - 825640

M.W Waste Services

Environmental & Drainage Specialists

Septic Tanks Emptied & Cleaned
Blocked Drains Cleared Fast
Grease Traps & Interceptors Emptied
Soakaways Rebuilt & Repaired
Gully Emptying & Street Cleaning
Refuse Collection
Septic Tanks Installed
High Pressure Drain Jetting
Mobile Steam Cleaning
Sewage Plant Maintenance
Industrial & Domestic Work Carried Out

Low Hang Bank Depot
Metsnby
Richmond
North Yorkshire
DL10 5NQ

Tel: 01325 377860/377850
24/7 Call Out
[Http://www.mwwaste.co.uk](http://www.mwwaste.co.uk)

Clear Your Blocked Drains Fast With Our High Pressure Jetter
Free Quotes & Estimates

THE OLD TEMPERANCE BOOKSHOP

Reeth, Richmond, DL11 6TE

Tel. 01748 884185

Christian Books, Cards & Crafts

Fairtrade Food

Beside the village green in Reeth



Opening times :

1.30pm - 4.00pm

Mon, Thurs, Sat

10.30am - 4.00pm

Fri (Market Day)

Christmas cards with
Bible verses

Property Restoration, Improvements & Maintenance

Darren Chadwick, Keld (Est. 2001)

General Building, Plumbing, Roofing,
Bathroom & Kitchen fitting
Floor/wall tiling, Joinery, Plastering,
Decoration, Damp Treatments
UPVC door and window fitting and repairs.
Fireplaces, flues and stove installation.
New: Commercial, Agricultural and
Residential spray and coating service
(decorative or protective) for large wood or
metal buildings or internal/external
decoration.

**Free Quotes and advice
always available.**

Tel: 01748 886698

07791 363285

Email: darrenchadwickbfc@aol.com

www.darrenchadwick.com

MCGARRY & CO SOLICITORS

Friendly local legal advice on :

- Wills
- Probate and Administration of Estates
- Powers of Attorney
- Nursing and Residential Home Costs
- Agricultural Matters
- Land Transactions

Home or farm visits

21 Galgate, Barnard Castle,

County Durham DL12 8EQ

Tel: 01833 600160

Email : office@mbmcgarry.co.uk

Regulated by the Solicitors Regulation
Authority

Golden Wedding

Ralph & Christine Porter would like to thank everyone who came to celebrate our Golden Wedding Anniversary on the 10th September. It was a brilliant night and everyone said how much they enjoyed it.

Also many thanks to Julie & Roy at the Buck Hotel: the food was excellent and all the staff worked very hard to make it a lovely evening. We collected £936 for Reeth Sports Fund so thank you all for your generous donations.

We held a BBQ the night before at Reeth Pavilion - a fantastic place to hold a venue with everything you need provided, except the food & beer of course.

So once again, thank you all.

Thank You

The recent golden wedding celebration by Christine and Ralph Porter at the Reeth Sports Pavilion raised £936 for Pavilion funds. The Trustees thank all those who contributed to this magnificent sum and wish Christine and Ralph many more happy years together.

The opportunity is taken to remind people that this superb facility is available for appropriate functions.

David Williams

Kings Studio, The Mews, Reeth

Centrally located holiday let
Sleeps 3/4

Two bedrooms, shower room, open plan kitchen/living room, single storey
Light and airy with historic charm

Telephone: 07805 442074

REETH GARAGE LTD.

**ARKENGARHTDALE ROAD,
REETH, RICHMOND,
NORTH YORKSHIRE.
DL11 6QT**

VISIT OUR AMAZING FORECOURT SHOP

**CLASSIC COUNTRY
CHECKED SHIRTS**

Show this advert to get 10% off

**HOGS OF FIFE
FABRIC HIKING BOOTS**

Only £39.95

GARDENERS

We stock compost, multi-purpose plant food, Tomorite and weed killers

HOME DECORATORS

we have paints, emulsions, brushes, fillers, silicones and wallpaper adhesives

HOUSEHOLD CLEANERS

Detergents, cleaning liquids, bleaches, cloths and sponges

TEL. 01748 - 884243


EST. OVER 60 YEARS



Covering Swaledale, Arkengarthdale,
Wensleydale and beyond!



www.nhflooring.co.uk

Image with thanks to 

Carpet - Wood - Laminate - Vinyl

Tel: 01748 822834

Mob: 07789 996526

E-Mail: nick@nhflooring.co.uk

We offer a home sampling and measuring service arranged at a time convenient to you. Please call us to make an appointment.

Alternatively, our showroom is open on Thursdays and Fridays from 9am - 5pm and Saturdays 9am - 1pm.

Find us at: Unit 6 Borough Court
Borough Road
Gallowfields Trading Estate
Richmond
North Yorkshire
DL10 4SX



Natural Carpet & Upholstery Cleaning

Local Family Business

20 years' Experience

We guarantee our Eco Safe Cleaning is Thorough - Fast Drying - Stays Clean Longer

Call 01969 622620

For Free Survey & Advice

www.ecodrycarpetcare.co.uk



Eco Dry Carpet Care is an endorsed Which? Trusted trader.

Owner Ian McIntosh

Holiday Home Yorkshire

Professional & reliable holiday home cleaning

Based in Reeth, we are on hand to ensure your holiday cottage changeovers run smoothly all year round. Our friendly and conscientious team are well trained, reliable and work consistently to a very high standard.

Management regularly carry out spot checks to ensure the highest of standards are maintained and your guests receive a welcoming first impression.

Our services also include:

- Full laundry service from our unit in Reeth
- Adhoc cleaning
- Deep and spring cleans
- Gardening and cottage maintenance
- Marketing and letting

Call in to Unit 3 on the Reeth Dales Centre to discuss your requirements with Hannah or call 01748 900 420.

www.holidayhomeyorkshire.co.uk

Banding Matters

October was a quiet month after what turned out to be a hectic Summer Season for the band with over 20 engagements between May and September.

With only one job in November (the Remembrance Day Parade and Service in St Andrew's Church, Grinton on Sunday 13th) it gives us time to rehearse for the busy Christmas period which will include three engagements on Sunday 18th December: Richmond Station 10.00am - 12noon; St. Mary's, Arkengarthdale Christmas Concert at 6.30pm; followed by Carols round the Christmas Tree on Reeth Green.

Our Annual Christmas Concert will be held in Reeth Memorial Hall on 20th at 7.30pm.

Vacancies for players: The band has so far been unsuccessful in filling the vacancy for a Principle Cornet player, since the retirement of Mike Hardman last Christmas. The vacancy for a BBb Bass player, since we lost Dave (Tubby) Allinson, has not been filled either. If anyone knows of two experienced players, who could fill these gaps in the band, please contact us through our web site: www.reethbrassband.co.uk or ring Sarah Allison the Band Secretary on 01748 884400.

Band history / Photo: We believe the photograph below, kindly provided by the Museum at Reeth, is the earliest one of Reeth Brass Band. It is thought to date back into the 1880s. If you have any information on this or any thing which pre dates it please contact me on 01765 603572.

Irwin Blenkiron





Tax is Changing

The Government has decided to make tax administration digital. The aim is for HMRC to be interacting digitally with all taxpayers by 2020.

By 2020, businesses and individual taxpayers will be able to register, file, pay and update their information at any time of the day or night, and at any point in the year, to suit them. For the vast majority, there will be no need to fill in an annual tax return.

By 2020, taxpayers will be able to see their complete financial picture in their digital account, just like they do in their online banking. And they will be able to set an over-payment of one tax against the under-payment of another: it will feel like paying a single tax.

Digital Tax Accounts

One feature of the new system is digital tax accounts. There are Personal Tax Accounts and Business Tax Accounts. It is proposed that if you have income taxed under PAYE and are also self-employed or have rental income, and the total of your self-employment and rental income is under £10,000, then you will no-longer need to complete a tax return.

Instead, you will update your digital tax account. HMRC intends that usually any tax due will be collected through your tax code. Digital Tax Accounts are generally available from April 2016.

These are very significant changes and there are many details yet to be decided.

How would Making Tax Digital work?

Contrary to popular belief, Making Tax Digital (MTD) would not require businesses to file four tax returns every year. Instead, businesses will send total income and total expenditure to HMRC about their business each quarter, or more often if the business prefers.

Businesses will need to send this information from online accounting software. HMRC has confirmed that they will not be providing their own bookkeeping / accounting software and that the use of "digital record keeping software that links to and updates business's digital accounts with HMRC" will be mandatory, except for taxpayers who are exempt from MTD.

Each business will have a proposed nine months after the year end to file an "End of Year declaration", submitting final figures. This would be a month less than the current tax return filing deadline, which is just under 10 months after the end of the tax year.

Here are a few details of note:

- The business won't have to keep any additional paper records.
- If the business is registered for VAT, one report would cover both income tax and VAT reporting requirements.

**Dawn Clarkson Associates,
Accountants and Business Advisors**

"Taxation is just a sophisticated way of demanding money with menaces."

Terry Pratchett, Night Watch

**Muker Parish Council
September 2016**

Muker Sign: Councillors expressed their concern at the length of time it was taking to replace the sign. Clerk to write to Highways stating that the Parish Council will source and erect a sign themselves.

Parking Restrictions Muker: Clerk had not received any feedback from Highways regarding when they were scheduled to come and change the signs.

Thwaite Notice Board: Cllr Reynoldson provided a quote from Dales Reyno-Vations to repair the notice board. The meeting agreed the quote. Clerk to contact Dales Reyno-Vations.

Trees Gunnerside Bridge: It was noted that the Trees had now been cut back and a good job had been done.

Thwaite and Hoggarths Bridge: The

Clerks had received an e-mail from the new Area Manager Richard Marr stating that he was looking into these matters and would inform the PC of progress.

Buttertubs Rut: Clerk to re-contact Highways

Gas Bottles Thwaite: A letter had been sent to the residence in question.

Better Health Programme: Cllr Blows informed the meeting of discussions which had taken place at the Area Partnership Meeting on the 21 September. With a presentation from the Better Health Programme regarding changes to Health Services in the area and the possible downgrading / closures of A&E in the area.

Annual Return: The Annual Return had been received from PKF Littlejohn and would now be displayed for Public perusal. The Precept had been received: £613.58

BEAR COTTAGE INTERIORS
Rustic Country Style Design



*Curtains & Blinds, Fabric, Furniture,
New Interiors and Gifts*

The Cattle Market, Market Place, Hawes, DL8 3RD Tel 01969 666077
www.bearcottageinteriors.co.uk

REETH AND DISTRICT GAZETTE LTD

Winter Gritting: Cllr Blows and Nick Turner informed the meeting of the discussions which had taken place at the Area Partnership meeting with the New Area Manager for Highways Richard Marr. NYCC Highways had stated that they would not upgrade the Buttertubs pass to priority one, however Richard Marr had given an assurance that irrespective of whether Priority one routes e.g. the B6270 in Swaledale and the A684 in Wensleydale require gritting, the Buttertubs would be gritted when needed. Local residents are asked to monitor the conditions during the winter and feedback to the PC or their local District or County Councillors any concerns about gritting with dates and times.

Grass Cutting: Cllr Metcalfe expressed concern regarding grass cutting on the road side. Clerk to contact Highways.

Baby Changing, Muker Toilets: Alison Stringer raised the need for a baby changing unit, particularly in the height of the Summer and in particular for tourists visiting the area. Cllr Blows to raise this matter.

Planning Application: Gunnings Barn: a application had been received and no objections

Planning Consultation: Nine Standards Rigg: To pave an area near nine

standards on the Coast to Coast route to prevent damage to the peat. The Parish Council had no objections and was supportive of promoting the Coast to Coast Walk.

Planning Application: Scarr House: No Objection

Trees in Swaledale and Arkengarthdale Conservation Area:

The Chairman read out a letter which had been received from the YDNP informing the PC that they had no objections to the removal of two Scotch Pines at a residence in Angram.

Planning Application: Three Day Trial: No Objection

Planning Application: Crowtrees Farm: roofing over sheep pens. No Objection
The Parish Council noted the response from YDNP regarding the placing of tables and chairs outside the business property in Muker.

Correspondence/AOB: Letters had been received from various charities: requesting donations from the Parish Council. Clerk to contact the charities stating that The Parish Council does not make donations.

Satron: Cllr Metcalfe raised the issue of water on the road at Satron. Clerk to contact Highways and the Gunnerside Estate.

A Stringer

Aches & pains?

Remedial massage can help...

- neck & shoulders
- back • hips • knees
- feet and ankles
- arms & hands

Jennifer Thursfield
Remedial Massage NAMMT CNHC

Tel: 07889 546608 • Based in Richmond
jtremedialmassage@gmail.com
www.jtremedialmassage.co.uk



Greenway Cattery

Set in the Yorkshire dales providing safe and comfortable care for your cat, peace of mind for you.

Open all year.
Reasonable rates.

Greenways
Grinton
Tel 01748 884312
Richmond Nth Yorks

**Grinton Conservation
Project &
St Andrew's update**

**Make Do and Mend - Saturday 5th
November**

There will be a Make Do and Mend session at Fremington Village Hall on Saturday 5th Nov from 10.00am until 4.00pm. Light refreshments will be served. Please do come and drop off your mending or ironing - or perhaps stay to enjoy a cuppa whilst waiting for your jobs to be done. The work will be done on a donation basis and proceeds will go to the upkeep of St Andrew's, Grinton. Please contact Susan Allison, for further information: Tel:884366 or e-mail susan.allison@btinternet.com

**St Andrew's Bells Celebration
Weekend 26th-27th November**

There is still quite a bit of fundraising to be done for essential maintenance on the bell tower so a bells weekend is going to take place to encourage you all in helping us to find the money we need in order that the bells don't fall back down the tower faster than they were put in. Do join us for:

Sat 26th Nov at Reeth Memorial Hall at 12 for 12.30pm - St Andrew's Annual Lunch with speaker: Dr John Wilkinson talking about the bell project at St Andrew's. All welcome to attend. Donations in lieu of ticket sales for the bell appeal please. Please book your place at this lunch with Dorothy Beal on 880146

Sun 27th Nov at 9.30am - Eucharist service of celebration to give thanks for the bells. Coffee/tea to follow as usual after the service at 10.30am

Sun 27th Nov at 2-4pm. Open bell tower and light refreshments in church - an opportunity to come and see the two new bells and meet the bell ringing team/ask them questions and enjoy a cup of tea and a scone!

Sun 27th Nov at 7.30pm - Pie and Pea Supper event at Cogden Hall [Veg option available]. Tickets £15 to include two course supper and a glass of wine. Please do come and support this event - all welcome. Tel: Susan on 884366 to book your supper place.

Interested in scything training?

In addition to grave recording and general maintenance work on the churchyard our September meeting of the Conservation Group was attended by Mark Hewitt of YDNPA who demonstrated how to use the Austrian scythes owned by the conservation group. One or two people have expressed an interest in learning to scythe and if enough people come forward we can put on another course similar to the one we had several years ago. Please contact Susan on the number above if you are interested in learning and caring for the churchyard in this way.

And finally: Many thanks to all those who supported the Bric a Brac event on 26th August at Reeth Market. The event raised a net total of £286.38 for the upkeep of St Andrew's, Grinton.

Susan Allison

TREVOR J. HIRD

ELECTRICAL CONTRACTOR

No job too small **FREE** estimates

PAT Testing Specialist

Telephone 01748 832238

**Middleham And The Dales
Local History Group
*In the Pipeline***

In the Pipeline will discuss recent work undertaken by Northern Archaeological Associates (NAA) for Yorkshire Water within the Dales and beyond, and will focus on the Swaledale pipeline.

It will be presented by Oliver Cooper, a project officer for NAA, who has 20 years' experience of archaeology including 11 as a professional archaeologist.

The talk will be at Middleham Key Centre on Tuesday 15 November 2016. Visitors are welcome at £3 per meeting. For more information contact Tony Keates on 01969 640436, or email dotandtonyk@btinternet.com

**Friends of The Dales
Countryside Museum**

This month's lecture at the DCM in Hawes is on **Friday November 18th** when June Hall will discuss '*Richard III and the North*'

The lecture starts at 7.30pm.



**Swaledale
Festival**
MUSIC, ARTS & WALKING
IN THE YORKSHIRE DALES

Annual General Meeting

&

Extraordinary General Meeting

Tuesday 22 November at 7.00pm

Hudson House, Reeth

ALL WELCOME

MICHAEL GUY

ELECTRICAL

FULLY QUALIFIED ELECTRICIAN

Over 14 years experience working in the dales in all areas of electrical work.

From an extra socket to a complete rewire; underfloor heating to portable appliance testing, I offer a reliable and competitive service.

Contact Michael on:

T: 01748 886097

M: 07980130017

E-Mail: michaelguy25@hotmail.co.uk

ELECSA APPROVED CONTRACTOR

The Healing Collective

Swinithwaite - Wensleydale

Are you feeling stressed, unhappy, anxious, overwhelmed or weary? Are you suffering from a physical illness, like back pain?

We offer a range of complementary therapies to help and revive you.

Reiki Reflexology Bach Remedies

Homeopathy Craniosacral Therapy

Emotional Freedom Technique

Shiatsu Counselling

Open sessions 1st Saturday of every month 10-4pm
Meet the therapists and have a FREE taster session

t: 0845 474 2383

info@healingcollective.co.uk

www.healingcollective.co.uk

Our therapy rooms are at the Coach House adjacent to Berry's Farm Shop & Cafe

GE BROWN & SON BUILDING CONTRACTORS

All Building Work Carried Out
Damp Proof Course & Timber Treatment
Specialist Joinery Work
Work carried out by time-served qualified craftsmen

Email: gebrownson@f2s.com
Telephone: 01748 886356

RED WEB

A locally based
web design company,
providing professional,
stylish and affordable
websites.

We offer a wide range of creative solutions

- ◆ Full website design service
- ◆ Manage & update existing websites
- ◆ Advice on every aspect of the internet
- ◆ Multimedia production

To find out more, phone John on

01748 886545

or visit our website

www.redweb.red-film.co.uk



Dawn Clarkson Associates

Accountants and Business Advisors

Minding your business

- Monthly Bookkeeping
- VAT Returns
- Company Accounts
- Sole trader & Partnership Accounts
- Letting Accounts
- Business Start-ups
- Business Coaching
- Payroll
- Tax Returns
- CIS Returns
- Charity Accounts

ESTABLISHED REPUTATION FOR SERVING SMALL BUSINESSES

Need help getting your books in order?

Call Dawn to discuss a Bookkeeping and Accounting Service to meet your needs at an affordable rate

Tel: 01969 624999 www.dawnclarkson.co.uk

Email: dawn@dawnclarkson.co.uk

Follow us on Twitter @DClarksonAssoc

REETH AND DISTRICT GAZETTE LTD

Crime In The 2 Dales

Last month we have had a spate of burglaries in Leyburn and the advice given to residents is to ensure adequate crime prevention measures are put into place if possible. We encourage people to make their unattended homes look occupied. This can be done by using timer switches for lighting for example. Leaflets offering advice will be distributed in the area of Swaledale and Arkengarthdale and anyone wanting information can contact me at the drop-in surgeries in Hudson House Reeth or via email:

TracieLee.TaylorPage@northyorkshire.pnn.police.uk

Last month we also received a report of an attempt to steal a Land Rover from Grinton. Damage had been caused to the door lock and rear lights of the vehicle. A male with an Irish accent was reported in the area trying to sell Tarmac. Three males with dogs were seen possibly hare coursing in the area of Marske. Groups of males with dogs also appear to take keen interest in the nearby properties. Please don't hesitate to contact North Yorkshire Police on 101 to report any suspect persons or vehicles.

PCSO 5550 Taylor-Page

Don't forget: The Gazette is online.

www.2dales.org.uk

Cosy Holiday Cottage

Attached to owners' farmhouse

on Hill Farm in Arkengarthdale.

Sleeps 2. No pets. E.M. on request.

Mrs Gladys Atkinson

Tel. 01748 884550

P Bellwood

Joinery and Building Services

Quality, Local, Reliable Time-Served Craftsman

www.paulbellwood.co.uk

07964 051 004

paulbellwood@aol.com

Bespoke Joinery

UPVC & Timber windows

and doors

Kitchen Fitting

Decking

Plastering

All aspects of building work

Fully insured.

References available on request.



Lady Interior Decorator

Painting & Decorating,

Competitive rates, Free estimates, Friendly advice, Est 25 years

Call Yvonne on: 07838378836

Based in Richmond

Email: yvonesdecor@hotmail.co.uk





**Keld Countryside
& Heritage
Centre Events
2016**

Sat 12th November: Celebration Ceilidh at Keld Public Hall at 7.30 p.m. Dancing to live Ceilidh Band, Cobbler's Jig Adult price: £15 Concessions: £12.50 & £10 includes 2-course supper.

Saturday 26th November: 'A Night with Neil Hanson' Venue: the newly refurbished upper room at the Keld Resource Centre. Time: 7.30pm. Tickets £5 to include drink & nibbles. Come and hear Neil's tall tales of life at the highest pub in England. Plus 'A Foot or Two Above the Rest' the 1985 BBC film of the inn, the 1984 Tan Hill Sheep Show and the iconic Everest Double Glazing advert.

For full details of all events contact Glenda Calvert Tel: **01748 886845**, e-mail: glenda_calvert@hotmail.co.uk; or visit: www.keld.org.uk

The Melbecks Society's
Annual Charity Coffee Morning

Wednesday 16th November

In Low Row Institute

10.00am – 12.00 noon

Join us for a morning of
'Fun, Good Company and Fund Raising'
in aid of

The Great North Air Ambulance Service

Entrance Fee ONLY £2.00

Includes Tea/Coffee & Scones/Biscuits



**Hudson House Centre
Reeth**

Owned by the Community of
the Two Dales

Community
Gallery
Learning
Library
Orchard
Transport
National Park Centre
North Yorkshire CC
Police
Richmondshire DC
Swaledale Festival

Business Forum
Business Services
Event Tickets
Internet
Local notices & information
Meeting Rooms
Offices
Refreshments
Shop
Tourist Information
Wi-Fi

Open all year
7 days a week – 10am to 3pm

01748 884485
www.hudsonhouse.info

Swaledale Festival

Work for the Festival - and get paid.

Swaledale Festival is restructuring its marketing, admin and office work. If you might be interested in a part-time flexible role, working throughout the year but with a peak in May and early June, look at our website after 1st November: www.swalefest.org

TLC@Gunnerville

The Thursday Ladies Club will meet at Gunnerville on 24th November at 7.30pm in the Village Hall when Katherine Guy will be showing how to make your own Christmas tree decoration. Visitors very welcome.

Elizabeth Bedford

The Poppy Appeal 2016

In addition to the collecting boxes which are now in place at all the usual locations, we will be having a stall on **Reeth Market on 4th November** with Remembrance items not found in the standard boxes.

Thanks to all who visited us at Reeth Show contributing £242.87 towards this year's appeal.

Martin Sunderland

Old Waiting Rooms

Self Catering

Hunmanby Railway Station (nr Filey)

Victorian Charm. Modern comfort.

Full weeks or short breaks.

Sleeps 2. Dogs welcome.

www.oldwaitingrooms.co.uk

Or ring Monica Bridge: 01723 892426

Ghyllfoot, Gunnerville

Fully Licensed Tea Room & Bistro

Open 10:30 – 5.00pm

(Closed Tuesdays)

Bistro open Wed & Sat evenings.

Traditional Sunday lunches served.

(Booking for both the above advisable.)

Curry takeaway 1st and 3rd Monday of each month - 6.00pm-7.00pm.

Functions for up to 45 catered for.

Check our website for monthly special events.

Enjoy home cooked food in pleasant surroundings.

Call us on (01748) 886239

E-mail: enquiries@ghyllfoot.co.uk

Visit: www.ghyllfoot.co.uk

Critchley Hall

S O L I C I T O R S



- Conveyancing
- Family Matters/Wills & Probate
- Commercial Property
- Leases & Tenancies
- Agriculture Property

"Your local legal experts"

Please Contact John Hall LLP / Stuart Hall LLP /

Debby Parish LLP

Critchley Hall Solicitors, The Office, Golden Lion Yard,
Leyburn, North Yorkshire DL8 5AS

Tel: 01969 625 526 Fax: 01969 625 255

Email: leyburn@chsolicitors.co.uk



Conveyancing
Quality



Solicitors
Regulation
Authority

resolution
first for family law

**News from
Arkengarthdale C of E
Primary School**

The weeks are flying by as we enjoy a busy and thoroughly enjoyable Autumn term at school. I would like to extend a warm welcome to a new member of the teaching team, Miss Burrell who joined us in September.

Following redecoration over the summer holidays, the classrooms are looking fantastic with lots of new equipment and resources. I would like to mention the school library in particular, which was generously supported by the Friends of the School.

Our breakfast club (from 8.00am) and after school clubs (4.30pm) are continuing to provide the children with a wide range of activities including art club, computer club and ukulele orchestra. Our regular sports club and specialist PE staff are doing a fantastic job supporting our talented students.

Just before the summer break we achieved sporting success with our Cricket Team representing Richmondshire in the County final and coming third out of over 400 schools; while the tennis team came first in the

Area Tournament.

As you will be aware, Arkengarthdale School has enjoyed a hugely successful collaboration with Richmond Methodist School for the last four years. Amongst many benefits, this partnership has allowed the children to enjoy joint events with their friends from Richmond including a programme of Forest School workshops and a delightful Harvest Festival with a joint choir.

Looking ahead we are planning our next Toddler in the Teepee event (due to popular demand) and of course organising our Christmas calendar, but we'll leave that until next time.

**Miss Helen Ring
Headteacher
Arkengarthdale C of E
and Richmond Methodist School**

**WENSLEYDALE TREE &
HORTICULTURAL SERVICES**

(Est. 1995)

DAVID ALLEN (HND Arboriculture)



Fully insured (£5 million)

Professional tree work: felling, crown thinning
etc undertaken

to BS 3998

Petrol log splitter for hire

Woodchipper for hire

Tree stump removal

Hedge establishment and maintenance.

Supply /planting of forest and ornamental trees

Fruit tree maintenance. Weed control services

Tel. 01969 667364 Mobile 07811 576108

E-mail:

enquiries@treesinwensleydale.co.uk

www.treesinwensleydale.co.uk

YORKSHIRE FOOT CLINICS

Podiatry/Chiropody

Tony Wilkinson SRCh, MChS, BSc Pod(Hons)

**Nail cutting, callous, corns &
ingrowing nails**

All treated in the comfort of your home

Tel. Richmond 850020

Or Hawes 667449

Always insist on state registered

Luxury Holiday Homes for Hire...

SWALEVIEW
PARK

OFF PEAK
SHORT
BREAKS
From Only
£249

Enjoy the peace and tranquility of Swaledale in our luxury holiday homes alongside the banks of the River Swale with stunning views of the Swale Valley.

Each has two bedrooms, one en-suite and sleep four comfortably.

Centrally heated and beautifully decorated throughout with a fresh, modern style and a light and airy interior. All the conveniences of home (just bring your own towels and everything else is taken care of).

- Laundry facilities
- No Smoking
- Children's Play Area.

To find out more and make a booking, please contact Mr or Mrs Carter

Telephone 01748 823106

info@swaleviewpark.co.uk

www.swaleviewpark.co.uk



JEREMY MOON

— DECORATOR & PAPERHANGER LTD —

Established 1981

Quick turnaround for holiday homes and lettings

Fully insured

Reliable and trustworthy tradesman

High class decorating at affordable prices

References available upon request

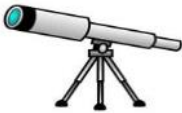
Call Jeremy for a free quotation

T: 01748 880 155

M: 07876 764 812

Email: JEREMYLMOON@BTINTERNET.COM





Astronomy in the Two Dales

Once upon a time, we celebrated this month by burning the effigies of traitors, now we grow moustaches. How times change. As I write this we are yet to find out who will be the victor in the US elections: Either way, an ill wind may be blowing across the Atlantic.

This is the time of year for meteor showers, and this month we have two: the Taurids, on the 4th and 5th of the month, giving 5 - 10 meteors an hour and the Leonids on the 16th and 17th. However the full moon on the 14th, which is also a super moon, will block out all but the biggest and brightest meteors. The Leonids do produce up to 15 meteors an hour, and as long as you are in a dark place wrapped up against the cold, there is always the chance to see something spectacular.

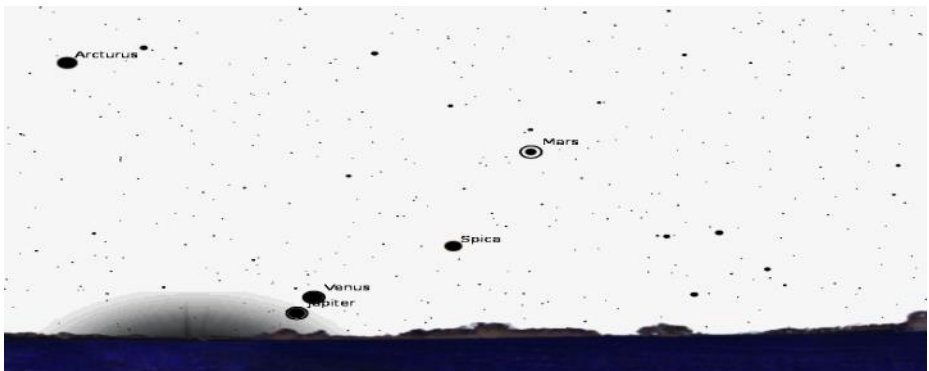
The planets are putting on a display for us during November, but this occurs in the early morning in the south eastern sky. Just before dawn, about 6.30am, Mars, Venus and Jupiter can be seen, and on the 13th Venus and Jupiter will be conjunct, closer than one degree apart. This is a great

opportunity for observation and can be seen through binoculars. BEWARE, the sun rises 45 minutes after the planets at 7.15am.

Every time there is an election in the USA, NASA gets worried: Will their funding be cut? Well, as NASA has a habit of blowing stuff up, killing its own astronauts or lying about their success, I for one am not surprised that they are always being squeezed for cash. However, a recent proposal for the construction of a deep space telescope that would dwarf anything seen before could be in jeopardy. The mirror would be 100 metres across with the whole modular assembly being 400 metres in length, this structure would be in orbit around the Earth and allow us to see, well, everything. The Hubble orbiting telescope has a 2.4 metre diameter mirror and that can see objects 10,000,000,000 light years away.

This project is many years away from completion, but the will needs to exist now to fund and plan for such ventures. This is not an easy thing to propose, when people are starving and wars rage, but it could all be done.

The Starman
Reeth Informal Astronomy Group
www.reethastro.org





**Wensleydale Creamery
Visitor Centre**

**Calvert's Restaurant
Christmas Lunch Menu**

From just £12.95

Our popular Christmas Lunch features our famous award-winning cheeses

28th Nov – 31st Dec

Booking advisable

**Christmas Shopping Evenings
Thurs 8th & Tues 20th December**

Free mince pies & mulled wine

20% off all products (T&Cs apply)

www.wensleydale.co.uk

01969 667664

HOUSE KEEPERS

DONT DESPAIR, CALL THE CLEANERS THAT CARE...



Operating a 5 Star cleaning service,
specialising in holiday cottages.

Contact Details: Nichola: 07710 560 400
Linda: 07917298244 Email: acslimited@hotmail.co.uk



Leyburn Arts & Community Centre - Events Calendar

Richmond Road, Leyburn DL8 5DL - Film Tickets: Adults £6 - Concessions £5

F I L M S

Fri 04 Nov - 4.30 pm & 7.30 pm - Sunset Song (15) 2hr 15m.

Fri 11 Nov - 5.00 pm & 7.30 pm - Ingrid Bergman In Her Own Words 1hr 48m. Some Subs.

Fri 18 Nov - 5.00 pm & 7.30 pm - Learning to Drive (15) 1hr 30m.

Tue 22 Nov - 2.30 pm Only - Special Yorkshire Archive Screening - A real treat!

Fri 25 Nov - 5.00 pm & 7.30 pm - Elvis and Nixon (15) 1hr 26m.

PART OF THE 'EXPLORING FILM SEASON'

Tue 01 Nov - 7.00 pm - Meru (15) 1hr 30m. £5. Cafe open 6 pm.

Tue 13 Dec - 7.00 pm - The Rocky Horror Picture Show (15) 1hr 40m. £5. Cafe open 6 pm.

Supported by Film Hub North, led by Showroom Workstation.

Proud to be part of the BFI Film Audience Network.

E V E N T S

Tue 12 Nov - 7.30 pm Rich Marsh (Plus Guests) Richmond based guitarist Richard Marsh and guests will perform an acoustic evening of popular songs. Tickets £10.

VOLUNTEERS WANTED

Please contact Kay in the administration office for details and current vacancies.

Tel: 01969 624510 - Email: admin@oldschoolhouseleyburn.com Web: oldschoolhouseleyburn.com

F: facebook.com/oldschoolhouseleyburn - Twitter: <https://twitter.com/TLeyburn> - Reg. Charity No: 1122092



2 Dales Football

At the time of writing the Under 12s have had 3 hard matches in the higher league. Against Bedale Ellen Atkinson pulled off some fantastic saves before Bedale scored. Dales went shy of the goal from a corner and then hit the post but went into half time 0-4 down. Dales came out battling for every ball. Eventually Bedale broke through again before Luke Metcalfe (now Dent!) made a fantastic run to score. Bedale got one more for a 1-7 win.

They then played a stronger and bigger Ripon team away who scored a flurry of goals but good attacking play down the left wing resulted in Dan Guy pulling one back. Staunch defending from newcomer Ben Parlour and Callum Bellwood held Ripon at bay for a while but the final score was a 9-1 loss.

The following week they played a very strong Catterick Garrison side. Dales' defence made some mistakes allowing Garrison to be 3-0 up before some good passing saw Luke in the Garrison box only to be fouled. Joe Alderson hammered in the penalty. The second half saw some good passing between Maisy Forbes and Harvey Olney and pressure was put on Garrison resulting in another penalty for Dales which Daniel Webster put away safely. Dales were then awarded a penalty against them allegedly on the grounds of "attempted hand ball" - a new one on me. Garrison ran out 8-2 winners but Dales are improving week after week playing teams older and more advanced and in none of the matches were Dales at full strength.

Our joint Under 10 team with Spennithorne made a good start against Catterick Garrison Panthers. Josh Luchford opened the scoring followed by Oliver Scott on the rebound. Village pulled one back but Ryan and Oliver both scored in the second half for a 4-2 win.

On October 2nd they travelled to Richmond Town without either keeper so players had to take it in turn. Both teams started lively with goal mouth action at both ends but pressure from SpenniDales started to pay dividends and a combination of good passing let Ryan in to score. Town made chances but again SpenniDales made a breakaway for Ryan to score. Ben Alderson played well in the middle supported by Josh on the left and a good defence was marshalled by Alfred Atkin and Hunter Howard. 0-2 win.

There was another match for which I do not have a report but I think they lost. Unfortunately with 2 teams I can't be at both.

We still urgently need someone prepared to coach the Under 8s and indeed also some more players at that age.

David Williams
01748 884650

davidwilliams@mowdenpark.co.uk

CHARMING OLD COTTAGE IN THE CENTRE OF REETH (sleeps 6+)

Open fire & background heating.

Fully fitted kitchen, dishwasher, fridge/freezer.

2 bathrooms, 2 double bedrooms, 1 twin bedroom & attic play area/fourth bedroom with 3 single beds.

Private, secure, rear courtyard area.

Dogs welcome.

Contact Denyse on **01740 631470** or

e-mail denyse00@btinternet.com

www.holidaycottageswaledale.com

Fremington Village Hall

Newly redecorated and refurbished, the Village Hall (known locally as the Sunday School) is available to hire for all kinds of events, from regular classes, talks and community activities, to one-off functions like children's parties, lunches and dinners and special occasions such as wedding receptions and anniversary parties. The Hall has a small kitchen with electric cooker and microwave; toilet facilities including disabled toilet; and a small rear garden. The Hall is a registered charity run by a small and dedicated volunteer committee. You can book the Hall by phoning or texting the bookings secretary **Julie Allen** on **07704 872873** or by email at **fremingtonvillagehall@outlook.com**


ROSE PETAL Beauty

Full range of beauty and holistic treatments at Town End Hall, Reeth.

Contact me, Rose Atkinson, on:
T: 01748 880207 M: 07813 841778

E: rose@rosepetalbeauty.co.uk

W: www.rosepetalbeauty.co.uk

: [rosepetalbeauty](https://www.facebook.com/rosepetalbeauty)

*facials - waxing - tanning - makeup - massage
- manicure - pedicure - gel nails - weddings*


SOAK-OFF
GEL POLISH


NYR Organic

SPARITUAL®

OPEN ALL YEAR ROUND, EVERYDAY

SWALEDALE WOOLLENS

MUKER-IN-SWALEDALE, RICHMOND
NORTH YORKSHIRE



Celebrating 40 Years

The Quality is Legendary...
...The Choice is Endless.

**TAKE HOME A PIECE
OF THE DALES**

Call into our shop in Muker Upper Swaledale and see what unique garments we have on display from hand knit cardigans, sweaters, hats, scarves & gloves to machine knit sweaters & cardigans for both ladies & gents. We also stock sheepskin rugs, slippers & gloves.

**WE ARE OPEN
EVERYDAY**
Tel. 01748 886251

Email: mail@swaledalewoollens.co.uk
or visit our website where you can order online:
www.swaledalewoollens.co.uk



**R.A.Lofthouse
Roofing Services
Kirkby Stephen**

We specialise in traditional & modern slating, flagging and tiling.

We offer a reliable and competitive service in and around the Eden Valley

- Traditional slate specialist
- Re-roof to repair work
- Slating, flagging & tiling
 - Lead work
 - Velux windows
 - Chimney work

For a free quotation or any enquires please call

Tel: 017683 42689

Mob: 07557738016

Email: r.a.lofthouse@outlook.com

A Further Swale Singers Concert

In aid of Gunnerside Chapel - now the only Methodist place of worship in the Two Dales - much of the Christmas music from Handel's "Messiah" will be sung on **Saturday, 17th December**. There will also be Vaughan Williams' "Fantasia on Christmas Carols", solos by Emma Wardell and Peter Carey, a short organ solo and Christmas carols.

The concert begins at 7.00 pm, and a 'Gift Aidable' minimum donation of £7.00 (free for children) at the door is requested. This concert is in addition to the concert in Arkengarthdale's St Mary's on Saturday, 26th November.

"Christmas Music" and Mince Pies
hosted by the Parish Choir in aid of
MacMillan Cancer Support.
Friday 16th December at 2.30pm in
Fremington Hall - £5.00 on the door

Cosy Holiday Cottage For Two

Peaceful location with panoramic views
of Arkengarthdale.

Ideal for walking or just relaxing.

Tel: Shirley Gale 01748 884779

E-mail: shirley@swaledale.org

D. J. OLNEY

***Painter & Decorator
Interior & Exterior***

Call

01748 884065 or

07801 026 006



J W Porter & Sons

Building + Roofing Contractors

All aspects of building work
skilfully undertaken by
local time-served builders,
with over 30 years' experience
of building in the dales.

Contact Greg, on:

**01748 886 434 / 253 or
07817 719881**

TAKE TIME TO RELAX!

I can cook delicious dishes ready for your
table or freezer, from
canapés through to desserts.

You can have quality homemade food
ready and on the table with
minimal effort.

**Contact Sandie Bond
on 01748 884794**

Dales Web Solutions

All aspects of Web site design

Visit: www.daleswebsolutions.co.uk

Email: info@daleswebsolutions.co.uk

Tel: 01969 666174

Mobile: 07837654030

NYCC HOME LIBRARY DELIVERY SERVICE

This service is provided fortnightly
on Thursdays for Reeth and Upper
Swaledale villages.

For elderly or disabled residents

Contact tel. no. 01748 824331

Please leave a message or phone
Colburn Library: 0845 4349502

Bellerby Study Group

This month's programme begins with Help For Heroes on Wednesday 2nd November when Hannah Cookman, the Visits, Events and Volunteers Co-ordinator at Phoenix House, will describe its work. Phoenix House at Catterick is dedicated to helping the rehabilitation of seriously injured military personnel who have suffered life changing injuries and trauma in the theatres of conflict.

On Wednesday 9th November Betsy Everett, a reporter with the D&S, will talk about The Askrigg Book which is about the history of Askrigg.

In The History of Land Drainage on Wednesday 16th November, Tony Keates, Secretary of Middleham and the Dales Local History Group, will

trace the development of techniques; from rig and furrow ploughing to the use of clay drainage pipe tiles. The talk has relevance to the local area in relation to the drainage of Snape Mire and a lost industry in Redmire.

To prepare us for Yuletide indulgences, on Wednesday 23rd November, Jim Hogg from The Little Chocolate Shop will describe chocolate making in Leyburn, the history of the shop and its production methods.

Bellerby Study Group meetings start at 7.30 pm and are held in the Memorial Hall, Church Street, Bellerby. Talks are followed by tea and cakes. Fees are £10 for a term of 8 weekly meetings; visitors and guests are always welcome at £2 each per meeting.

For more information contact Douglas Dempster on 01969 622040.

Cafe Specials

SOUPER TUESDAYS

Homemade soup, bread roll,
slice of cake & hot drink
Only: £6 every Tuesday



SHOW STOPPER FRIDAYS



Every week a 'Showstopper' of a cake!

Dales Bike Centre

Fremington

dalesbikecentre.co.uk

tel:01748 884908

14 Bed Bunk 'n' Breakfast

New & Ex Hire Bike Sales
Bike Hire & Repairs



COTIC



FROG
bikes



Orange
MOUNTAIN BIKES

**Reeth Parish Council
September 2016**

Police update: PC Sutcliffe attended the meeting to report on recent crimes and incidents of anti-social behaviour in Swaledale and the wider area, and on steps being taken to deal with this.

As well as car and quad bike theft, a number of sheep had been stolen and a sheep tag scanner was being used to carry out on the spot checks of livestock being moved. Automatic car registration recognition technology was being used on approach roads into the dales. The police were also hoping to obtain a marker which could be used on valuable property of all sizes, from tools to farm equipment.

A number of burglaries in Leyburn and Richmond had targeted empty properties and residents were encouraged to take extra precautions if they were away from home.

A Community Messaging Service had been set up to pass on alerts about local incidents via email or text message and this could be accessed via the website on www.nycm.co.uk

Dog fouling: There had been a generally positive response to the 'dog free' area outside the ice cream parlour and Coun. Frankland would organise some more permanent signs.

Defibrillator: The clerk and Coun Longstaff would meet to discuss a suitable site for a defibrillator in Healaugh.

Community funding: Tesco's 'Bags of Help' scheme was open to applications by community groups looking for funding for local projects.

Streetlights: Two streetlights had been replaced in the Mews and at the

TO LET

1 Bedroom traditional cottage
in Langthwaite
Unfurnished
Tel 01748 884007 or 07807 148447

bottom of the village but others were out of order near The Laurels and at High Fremington and would be reported.

Village green: It was thought that a problem with overflowing bins in the summer was probably an isolated incident and that there was no need at present to get larger ones.

Permission had been given for the owners of Edgemont to put scaffolding on the green. Installation of the posts and chains would be finished when there was less grass cutting to be done. The clerk would look into vehicle damage to the verge near Fremington Corner.

Coun Longstaff passed on thanks from residents of Healaugh to Gary Woodward for cutting the greens and dealing with a wasps' nest in the village. Overhanging trees were causing problems in Healaugh.

Village pound: It was agreed that in view of the ongoing problems with the pound the current contract would be terminated and the tenants' bills settled.

Playground: Recent work by Playdale had cost over £900, chiefly for repairs to the zip wire caused by inappropriate use by adults.

Highways: Coun Bearpark raised the question of the main road to Richmond which was subsiding again only two years after the repair work. Coun Beal confirmed that Highways were aware of the problem and were considering how best to deal with it. **Tracy Little**

Support the Reeth & District Gazette

Order your printing from us and we will credit 10% of the value of your order to the Gazette account at no extra cost to you!

Quote Gazette when ordering

Booklet Printing

- Reports
- Manuals
- Brochures
- Catalogues
- Newsletters



Saddle Stitched - Perfect Bound - Wire Bound

From your computer files or hard copy

NCR set Printing

- Invoices
- Estimates
- Order Forms



Fast Turnaround - Padded - Loose Sets



Reflections
PhotoGraphic
Services

Tel: 01833 690733

www.refprint.co.uk

email: sales@refprint.co.uk

Calvert & Jenkinson Ltd Building Contractors



All aspects of building work carried out from renovation to new builds, plastering to roofing.

Tel:

01748 825962

07837 955869

Email: cjbuildersltd@gmail.com

Company No: 6769263



Cat Hole
Cottages

*Beauty and tranquillity.
Quality and care.*

Cat Hole Cottages | Cat Hole House | Thwaite
Richmond | North Yorkshire | DL11 6DR
Tel: 01748 886366

Discover our treasury of gorgeous cottages in Swaledale and Arkengarthdale. Well-equipped, stylish and individual, our cottages offer guests a wonderful holiday in the midst of superb scenery!

**To find your perfect cottage
call Judith on 01748 886366**

www.catholecottages.com
judith@catholecottages.com

Diary Dates

November

- 4th Domino and Whist Drive, Muker Public Hall. 7.30pm
- 12th Film in Gunnerside Village Hall: *Florence Foster Jenkins*. £5 (children £3). 7.30pm. Doors and bar open at 7.00.
- 14th Two Dales Gardening Club, *Making of Rewela Cottage Garden*, Sports Pavilion. 2.00pm
- 16th Melbecks Coffee Morning, Low Row Institute
- 15th Reeth Methodist Scrapbook event in Hudson House. 12.30 - 3.30pm
- 24th TLC@Gunnerside Village Hall, *Making a Christmas Tree Decoration*. 7.30pm
- 25th Reeth Methodist Scrapbook event in Hudson House 9.30am - 12.30pm
- 26th Swale Singers concert, St Mary's Arkengarthdale. 7.00 pm

December

- 2nd The Emily Smith Christmas Show, Reeth Memorial Hall. 8.00pm
- 3rd North Country Theatre: *The Wish House*, Reeth Memorial Hall. 7.30pm
- 3rd Film in Gunnerside Village Hall: *Dad's Army*. £5 (children £3). 7.30pm. Doors & bar open 7.00

- 3rd Forest Church Christmas event Grinton Churchyard 2.00-4.00pm
- 12th Two Dales Gardening Club, Christmas Buffet, Sports Pavilion. 1.00pm
- 16th Dominos & Whist, Low Row
- 17th Swale Singers concert, Gunnerside Chapel, 7.00pm

January

- 7th Film in Gunnerside Village Hall: *Second Best Exotic Marigold Hotel*. £5 (children £3). 7.30pm. Doors and bar open at 7.00.
- 9th Two Dales Gardening Club, Sports Pavilion, Home Composting. 2.00pm

Market Place

Advertise here for free!
20 words or less.
Non-business adverts only.

For Sale

Thule Roof Bars, Rapid System lockable. Aero-profile suitable for old style Freelander. £25. **01748 886807**

Small beech kitchen table 26in x 34in £20. **01748 886807**

Dining room suite. Round table, about 3' x 3' top; 4 padded dining chairs. In dark wood. £60.00. Tel **01748 825463**

Last Words

"I can't sleep." J. M. Barrie
 "I've never felt better." Douglas Fairbanks Sr.
 "Go away. I'm all right." H. G. Wells



BUCK HOTEL



REETH

QUALITY EN-SUITE ACCOMMODATION

REMEMBER REMEMBER

THE 5TH NOVEMBER!

YORKSHIRE BANGERS & CREAMY MASH, A PIECE OF PARKIN AND A HALF PINT OF BEER OR LARGER.

£6.95 PER HEAD. AVAILABLE

5PM - 9PM WHILE SUPPLIES

LAST

Don't pass the Buck...We promise we won't!



BOOKINGS NOW BEING TAKEN FOR CHRISTMAS PARTIES AND NEW YEARS

EVE CABARET

DINNER

CALL FOR DETAILS

New Winter Menu coming soon

QUALITY SELECTION OF REAL ALES AND FINE WINES

DELICIOUS HOME MADE PIZZAS AND TAKE AWAY SERVICE AVAILABLE.

PARTIES, WEDDINGS AND WAKES CATERED FOR IN OUR FUNCTION ROOM.

TO BOOK A TABLE OR RESERVE A ROOM - CALL: 01748 884210



Gorgeous Cottages are the Letting Agency for Luxury Holiday Cottages in Yorkshire. Get in touch and find out how we can help your holiday home realise its full potential.



'gorgeous'

[adjective]
1. strikingly beautiful or magnificent
2. (informal) extremely pleasing, fine, or good



GORGEOUS YORKSHIRE | GORGEOUS COTTAGES



www.gorgeouscottages.com



0844 736 6276



info@gorgeouscottages.com

The Bridge Inn, Grinton

Tel 01748 884224 www.bridgeinn-grinton.co.uk

Traditional coaching inn serving quality food in the restaurant and bars
Open all day. Food 12noon to 2.30pm and 5.30pm to 9.00pm



Recommended in the CAMRA and Good Pub Guides
Music night with local musicians Thursday from 9.00pm
Children and dogs welcome. En suite accommodation

DONE AND DUSTED HOLIDAY COTTAGE CLEANING

Weekday/weekend turnaround cleaning

Spring and Deep Cleaning

Full Laundry Service

Mattress Steaming

Carpets/Rugs Cleaned

Gardening and Maintenance

Temporary relief cleaning cover
all year round

Long established, reliable with
attention to detail

Tel Karen on

07748 811680 /

07583 271419

to discuss your
requirements

www.doneanddustedcleaners.co.uk



3D Cross-Stitch



The Nutmeg Gallery

Dozens of models on display together with kits,
accessories and the full range of DMC stranded cotton
Normally open Mon-Fri, and Saturday afternoon.

Reeth Dales Centre, Off Silver Street,
Reeth, DL11 6SP, 01748 884926



www.3dcrossstitch.co.uk