

REETH & DISTRICT GAZETTE

ISSUE NO. 314

AUGUST 2022



*Your local news magazine
for the two dales*

PRICELESS

REETH AND DISTRICT GAZETTE LTD

Not Woolly At All

Ruth Lindsey is on a mission to get a better price for Swaledale wool.

Q: Tell us about yourself

A: I'm Ruth, I live in Hawes. I was the fourth generation of my family to join the industrial fabric business. I've lived in Wensleydale for twelve years.

Q: You've brought some things with you. Can you talk us through?

A: Well, here's some Swaledale wool. It's a wonderful product. It's very hardwearing, but too tough for most clothing. Without new applications, farmers are only getting 8p per kilo of wool. At these prices, they lose money on every sheep they shear.

Q: So I'm guessing these are some new products you're working on. This one looks like a massive bolster cushion. What's it for?

A: There's a great deal of work going on to restore peatland to help store carbon and reduce flooding. We're importing large numbers of coir logs to dam the grips and gullies. They do the job, but why bring materials from all around the world when we have an equally good local product looking for a market? So this is a Swaledale wool log for peatland restoration!

Q: I love the idea. What are the practicalities?

A: I have a background in commercial textile manufacture, so I'm able to make our Swaledale wool logs cost-competitive with coir, and still pay farmers a fair price for wool, 50p a kilo, so they're not losing money on shearing. Landowners and National

Parks are interested in running trials with the products.

Q: That's really inspiring Ruth, and it's not the only product you've brought. Here's a massive roll of felt.

A: Yes, and it's made from Swaledale wool too. It seems to be working well as a weed suppressant made entirely from natural products and removing the need for herbicides. We are developing a woven fabric to be used at scale in peat restoration as an alternative to heather brush.

Q: So why have you fixed on these products?

A: There are several reasons. It's easy to think of small applications which are lovely but don't actually use much wool. There's a lot of Swaledale sheep out there, so to make a difference, we need large scale applications. It also helps that my family background is in commercial manufacturing. There are a sizeable number of niche textile manufacturers in Yorkshire and Lancashire which we can use to manufacture products on a large scale. And of course, as we continue to invest in the environment, we should use local and sustainable products where we can.

Q: Last question, if it was your birthday tomorrow, what present would you like?

A: I really want to get involved with some of the peat restoration projects going on in Swaledale, Arkengarthdale and Wensleydale.

Ruth was talking to Sustainable Swaledale on 9th June, and can be emailed at ruth@ndwp.uk

REETH AND DISTRICT GAZETTE LTD

Gazette Management Team

Chairman: Susan Miller

Longstone, Low Row, Richmond
DL11 6NA

Tel: 01748 886 358

E-mail: chairman@reethGazette.co.uk

Secretary: Sue Alderson

Holme View, Low Row, Richmond,
DL11 6PE

Tel: 01748 886 292

E-mail: secretary@reethGazette.co.uk

Editor: Jackie Pope

Guildy Hall, Muker, Richmond,
DL11 6QG

Tel: 07885 498676

E-mail: editor@reethGazette.co.uk

Treasurer: Andrew Bedford

Glory Be, Blades, Richmond, DL11 6PS

Tel: 01748 886 974

E-mail: treasurer@reethGazette.co.uk

Subscriptions: Elsie Whitehead

5 Place Hill, Reeth, Richmond,
DL11 6SD

Tel: 01748 884 132

E-mail: subscription@reethGazette.co.uk

Distribution: Trevor Brown

The Cottage, Healaugh, Richmond,
DL11 6UA

Tel: 01748 884 111

Published by

The Reeth & District Gazette Ltd.

Company Number: 06541854

c/o The Company Secretary

Andrew Bedford, Glory Be, Blades

Richmond, North Yorkshire DL11 6PS

Tel: 01748 886 974

E-mail: treasurer@reethGazette.co.uk

No material may be reproduced in whole or in part without permission. Whilst every care is taken for accuracy, the publishers cannot be held legally responsible for any errors or opinions in articles, listings or advertisements.

ADVERTISING

For information on advertising and prices, please contact the treasurer. Advertising copy, should be sent to the editor.

The editor reserves the right not to publish any advert or article considered to be inaccurate or misleading.

All articles or items for inclusion should be sent to the editor
E-mail: editor@reethGazette.co.uk
or left at Reeth Post Office.

The Editor welcomes feedback.

At the editor's discretion, these will be published with Editor responses in the 'Letters to the Editor' section.

Please send feedback to
editor@reethGazette.co.uk

Gazette Deadlines

The deadlines for the next two months are:

September issue: August 7th 2022

Please note early deadline

October issue: September 13th

PLEASE NOTE: We will endeavour to publish all suitable items submitted by the deadline date but this cannot be guaranteed and is at the sole discretion of the editor.

Posting The Gazette

To post a copy of this Gazette to a friend or relative, will require a Large Letter size and will cost £1.65 second class, or £2.05 first class.

Cover Photo taken at Dales Bike Centre, Fremington by Mike Joiner

Swaledale B-Line

Did you know that Swaledale is part of B-Lines, a network of three-kilometre corridors connecting the best remaining areas of wildflower rich habitat? The creation of this national network is aimed at making a more permanent wildlife habitat to halt the massive 60% decline of pollinators in the UK. Not just bumblebees but all bugs - 2/3 of our moths and 71% of butterflies are in long-term decline. There are several reasons for this but one is the fragmentation of remaining natural habitat and we can all do our bit to reverse the trend. Here in Reeth, the Community Orchard Garden is part of the B Line with a traditional Dales wildflower meadow plus borders full of nectar rich plants. Can further spaces in our villages be used to grow bee friendly plants? Leaving wild flowers to grow on verges and in public spaces? Mowing but leaving some areas 'wild'? Some local landowners have started restoring meadows in addition to the traditional hay meadows up the Dale - admired by visitors and locals alike. If we all leave a little wild corner in the garden or plant nectar rich flowers in pots or containers, it is a start. There is plenty of help and advice out there: www.buglife.org.uk is a good resource on B-Lines and also websites such as www.bumblebeeconservation.org.uk. Their Bee the Change campaign gives free how-to guides and advice. Perhaps this time next year, we could run our own competition for the best wild life garden/space? I hear that the Best Kept Village Awards will have a wildlife category so maybe that's a start!

Josie Kyme



Going above and beyond for our clients...

For more information please visit our website at: hallandbirtles.co.uk

CONVEYANCING **FAMILY MATTERS** **WILLS** **THE ELDERLY CLIENT**

Hall & Birtles
-SOLICITORS- 

Our services include:

- Landlord & Tenant
- Buying & Selling Property
- Wills, Trusts & Probate
- Divorce & Matrimonial Matters
- Commercial & Private Disputes
- Agricultural Matters
- Powers of Attorney


30 min FREE initial consultation

Directors: Alastair C. Birtles BA Hons | Stuart J. Hall LL.B | Deborah C. Parish LL.B

Leyburn Office
The Office, Golden Lion Yard, Leyburn,
North Yorkshire, DL8 5AS
Tel: 01969 625526
Email: leyburn@hallandbirtles.co.uk

Hawes Office
Bank Chambers, Main Street, Hawes,
North Yorkshire, LS8 3JL
Tel: 01969 667171
Email: hawes@hallandbirtles.co.uk


3D Cross-Stitch



The Nutmeg Gallery

Dozens of models on display together with kits, accessories and the full range of DMC stranded cotton. Normally open Mon-Fri, and Saturday afternoon.

Reeth Dales Centre, Off Silver Street,
Reeth, DL11 6SP, 01748 884926



www.3dcrossstitch.co.uk

REETH AND DISTRICT GAZETTE LTD

The Charles Bathurst Inn ARKENGARTHDALE

Outstanding fresh food served in a warm & friendly atmosphere.

19 en-suite bedrooms with amazing views.
Available for dinners, weddings & meetings.



- Open Lunchtime 12 – 2.30pm Tuesday – Sunday (Closed Monday lunch*)
- Evening Meals every night 6 – 8.30pm
- *Open Bank Holiday Mondays

FOR FURTHER DETAILS OR TO RESERVE A TABLE

Telephone: 0333 700 0779 Website: www.cbinn.co.uk

The Punch Bowl Inn

Outstanding fresh food served in a warm & friendly atmosphere with stunning views of Swaledale.



- Open Lunchtime Tuesday – Sunday (Closed Monday lunch*)
- Evening Meals Mon - Sat 5.30 – 8.30pm, Sun 5.30 – 8pm
- *Open Bank Holiday Mondays

FOR FURTHER DETAILS OR TO RESERVE A TABLE

Telephone: 0333 700 0779 Website: www.pbinn.co.uk



All aspects of tree work carried out by fully insured and NPTC qualified tree surgeons.

Tree removal, pruning, planting, hedging and stump grinding.

Contact Tom Hollingworth
0792932227

www.arborestrees.co.uk

OPEN ALL YEAR ROUND, EVERYDAY
SWALEDALE WOOLLENS
MUKER-IN-SWALEDALE, RICHMOND
NORTH YORKSHIRE



Celebrating 40 Years

The Quality is Legendary...
...The Choice is Endless.

TAKE HOME A PIECE OF THE DALES

Call into our shop in Muker Upper Swaledale and see what unique garments we have on display from hand knit cardigans, sweaters, hats, scarves & gloves to machine knit sweaters & cardigans for both ladies & gents. We also stock sheepskin rugs, slippers & gloves.

WE ARE OPEN EVERYDAY
Tel. 01748 886251

Email: mail@swaledalewoollens.co.uk
or visit our website where you can order online:
www.swaledalewoollens.co.uk

James Peacock



Solid Fuel Merchant Bainbridge

Good quality fuels at
competitive prices.
Deliveries to Wensleydale,
Swaledale and Coverdale.
No delivery too small.

Tel. 01969 650212/650465

Email:

james-peacock@btconnect.com
www.james-peacock.co.uk



FREE
Professional
Spot & Stain
Remover

Carpet Cleaning

Rug Cleaning

Upholstery Cleaning

Mattress Cleaning



*Proudly serving The Dales
Since 2014*

Leyburn - 01969 622620

Mobile - 07944 774947

www.ecodrycarpetcare.co.uk



JEREMY MOON

— DECORATOR & PAPERHANGER LTD —

Established 1981

Quick turnaround for holiday homes and lettings

Fully insured

Reliable and trustworthy tradesman

High class decorating at affordable prices

References available upon request

Call Jeremy for a free quotation

T: 01748 880 155

M: 07876 764 812

Email: JEREMYLMOON@BTINTERNET.COM



Two Dales Community First Responders

The Two Dales Community First Responders, along with a representative from Yorkshire Ambulance Service, will be on Reeth Green on Friday 19th August between 09.30 and 14.30 to explain our role and promote interest in joining our local team of volunteers. As volunteers, we are based within the Two Dales and therefore we may be only a few minutes away from a medical emergency and can provide vital support to the patient and their family until the ambulance arrives. Please come along to say hello and have a look at the equipment we are trained to use in medical emergencies. You can also have a go at cardio-pulmonary resuscitation (CPR) on a mannequin and use an automated external defibrillator (AED) to gain an understanding of the life-saving skills required for victims of sudden cardiac arrest. The AED, also called a defib, is easy to use and doesn't require special training so if you've ever been curious about the devices located in prominent community locations, come along, and have a look. We look forward to seeing you.



Alison Sivyer

HARKERS COACHES



Hill Top Garage, Reeth

Tele: 01748 884533

Pauls Mob: 07703 559959

**COACH,
PRIVATE
HIRE &
GARAGE**

Coach, Mini Bus and private taxi hire
General vehicle maintenance including services, tyre supply, fitting and balancing.

T.A.R. Longstaff

Mobile Hydraulic hose repairs in Reeth and surrounding areas, anywhere anytime.

Also mobile on site welding.

**Tel Percy on
07889725349.**

Swale Singers: what next?

The reality of performing *Messiah* at Ripon Cathedral in May at the Gala concert for the 50th anniversary of the Swaledale Festival far exceeded the hopes - and fears! - of many of us.

It was an amazing experience to sing to what was probably the biggest audience either of the two choirs had ever experienced. Nearly seven hundred people gathered to hear the Festival Chorus, made up of the Swale Singers and Richmondshire Choral Society, a period instrument orchestra led by Jo Lawrence and four superb soloists. Zoe Brookshaw (soprano) William Towers (alto) Nicholas Pritchard (tenor) and Nicholas Mogg (bass) gave stunning performances and it was a delight and a privilege for the choir to sing with them, all brilliantly conducted by Peter Stallworthy.

So what next? A good question. How do we follow that, you might ask?

Well, we've got some good stuff lined up. On **Sunday 4 September at 3pm in Reeth Memorial Hall** we'll start working on Haydn's *Nelson Mass* - also called *A Mass for Troubled Times*, so particularly apposite given the state of the country - and the world - at the moment.

We'll also be singing John Rutter's *Magnificat*, so two nicely contrasting works for a spirit-lifting pre-Christmas concert.

Everyone is really welcome to join us and have a good sing. Whether you haven't sung for a while, or maybe never sung in a choir before, you'll enjoy the camaraderie and the pleasure of making music together.

Contact Jackie on 07885 498676

Frank Parker of Woking and Muker died suddenly in Aysgarth on 30th May, aged 85 years.

He was a beloved dad, father-in-law, grandad, brother, uncle and great friend to many. A private family Service was held at Darlington Crematorium on 7th July.

A Celebration of Frank's life will be held in Muker Public Hall on 14th August at 3pm to which you are warmly welcome. If you'd like to come please email violin@joannalawrence.co.uk

*Donations would be gratefully received in memory of Frank by
York Road Project
www.yorkroadproject.org.uk or
Rona Sailing Project
www.ronasailingproject.org.uk
Jo Lawrence*

Leyburn u3a Group August Meeting

The August meeting of Leyburn u3a is on Friday 19th August, 10.00am for 10.30am at the Arts & Community Centre, Richmond Road, Leyburn. From Scalpel to Spade - Helen Neave.

Meetings are usually held the third Friday of every month.

Future Meetings:

September 16th Barrow to Baghdad and Back

Visitors are always welcome.

John Sutton

u3a
learn, laugh, live

**The Gazette is online:
www.2dales.org.uk**





**YOUR LOCAL TRADITIONAL
CHIMNEY SWEEP**
NACS & HETAS qualified & registered

**We set ourselves very high standards
and take every care in your home**

We offer a comprehensive service
All types of chimneys swept to relevant BS Std.
Bird guards & cowls, etc. supplied & fitted
Advice freely given, problems solved
Carbon monoxide detectors
Chimney pots replaced

01765 688078
www.sweepinthedales.co.uk

Stove Refurbishment
Stove servicing and repair
Solid fuel stove installations
Stainless steel flexible linings
Stainless steel rigid flue systems
Only high quality components are used

HETAS qualified & registered installer






SWALECTRIX
YOUR LOCAL DALE'S ELECTRICIAN

- All Electrical Work Undertaken
- Fault Finding & Maintenance
- TV, DATA, CCTV & Networking

07400 411 411
01748 327 372

pete@swalectrix.com
Chisel Cottage,
Reeth, DL11 6TQ

www.swalectrix.com




Yorkshire Dales Accountancy
Chartered Accountants

taxation & business advisors

Yorkshire Dales Accountancy aims to provide an efficient, cost effective service for our clients; we pride ourselves on delivering these services in a professional and friendly manner. We want all our clients to feel that we are approachable, no matter what their query, and we aim to offer sound, practical advice.

The Partners, Martin Fleming, a Chartered Accountant, and Hazel Thwaite, a Chartered Tax Advisor, together have over four decades of experience. We provide a broad range of accountancy and taxation services

E-mail:
Info@yorkshiredalesaccountancy.co.uk
Telephone: 01969 678128

www.yorkshiredalesaccountancy.co.uk
Address: 2 Chapel Street, Hawes, DL8 3QG

THE HEALING COLLECTIVE
Encouraging health and well being with a range of therapies including

- * Reiki * Counselling * Bach Remedies *
- * EFT (tapping) * Indian Head Massage *

Treatments for animals also available.

Coach House, Berry's Farm Shop & Café,
Swinithwaite, DL8 4UH. t.0845 474 2383
info@healingcollective.co.uk
www.healingcollective.co.uk



FRIENDS' SCHOOL AT REETH TRUST
Charity Number 529603

Grant Applications for the Academic Year 2022-23

Small grants are available to local young people, under the age of 25, attending **full -time** further education, towards the cost of their studies. (Not transport costs). Applications need to be received before **Monday 19th September.**

For an application form, please contact Friends School at Reeth Trust
Secretary

By e-mail to gaynorhemming@gmail.com

or by post to

Gaynor Hemming, 20 King St, Barnard Castle. Co.Durham, DL12 8EP

Fremington
dalesbikecentre.co.uk
tel:01748 884908

Cafe & Cakery

SOUPER TUESDAYS
Homemade soup, bread roll,
slice of cake & hot drink
Only: £7 every Tuesday

**SHOW STOPPER
FRIDAYS**

Every week a 'Showstopper' of a cake!

Dales
Bike Centre



OPEN EVERYDAY!

Book a Stay
14 beds Bunk & Breakfast

New & Ex Hire Bike Sales
Mountain/Road Bike Hire
E-Bike Hire & Sales
Bike Servicing



FROG
bikes

Orange
MOUNTAIN BIKES



Swaledale Footcare

Meg Squires MCFHP MAFHP

Clinic Visits at Thornborough Hall Leyburn or
Home Visits Including:

Toenail Cutting

Corn Treatment

Removal of Hard Skin and Calluses

Treatment of Thickened and Fungal Nails

Phone : 01748 884795 or Mobile: 07929065602

Email meg.e.squires@gmail.com

Member of the British Association of Foot Health Professionals



ANDY MALTON LTD – DALES GENERAL BUILDING CONTRACTOR

Dry lining/ plastering/ ceiling work

Roofing/ pointing/ guttering work

Most building repair work carried out

Free estimates - No job too small

01969 624979 / 07837645104

andymalton56@gmail.com



The Bridge Inn, Grinton

Tel 01748 884224 www.bridgeinn-grinton.co.uk

Traditional coaching inn serving quality food in the restaurant and bars

Open all day. Food 12noon to 2.30pm and 5.30pm to 9.00pm



Recommended in the CAMRA and Good Pub Guides

Music night with local musicians Thursday from 9.00pm

Children and dogs welcome. En suite accommodation

REETH AND DISTRICT GAZETTE LTD



Don't forget, all our talks are held in Reeth Memorial Hall, doors open 7.00 pm for a 7.30 pm start. Though we have plenty of room it would be helpful if you could 'phone or e-mail to book. It helps us prepare the Hall in advance. Our August talks include **Dr David Johnson on 'Lime kilns in Swaledale & Arkengarthdale: the where, the when and the what for?'** on **Wednesday 3rd August**. David had to cancel this talk back in 2018 due to illness, then there was the Flood of 2019, and then the Plague - so fourth time lucky. Now is a chance to understand these distinctive forms that appear in our landscape. Next, we have the rare privilege of welcoming back **Prof William van Vugt** from Grand Rapids talking about his new book (copies of which we hope to have for the evening for him to sign) **'Portrait of an English Migration: North Yorkshire People in North America'** on **Wednesday 17th August**. Some of you might remember that he gave a lecture on this project in its early stage in the Museum - at which several of the audience brought letters of their Swaledale forebears written from America. On **Wednesday 21st September Will Swales** will give THE JOHN SQUIRES talk on, **'Marshal-General Plantagenet Harrison: Richmondshire's fake prince of the royal blood'**. This will take the form of a breath-taking biography of a son of Whashton who

was the author of the prodigious and controversial genealogical study The History of Yorkshire Part 1: The Wapentake of Gilling West. The talk will describe the life-long antics of a giant of a man with an intellect to match and an unshakeable self-belief that sustained his enthusiasm through repeated failure as a global military adventurer and international fraudster. One of the first things John Squires showed us, when we took over the Museum twenty years ago, was his copy of this epic book, and Hilary Squires will be bringing it to the talk. We will also be bringing the Museum copy, donated by John Sharpe in memory of his wife Susan (née Alderson) which, thanks to many donations, we were able to restore.

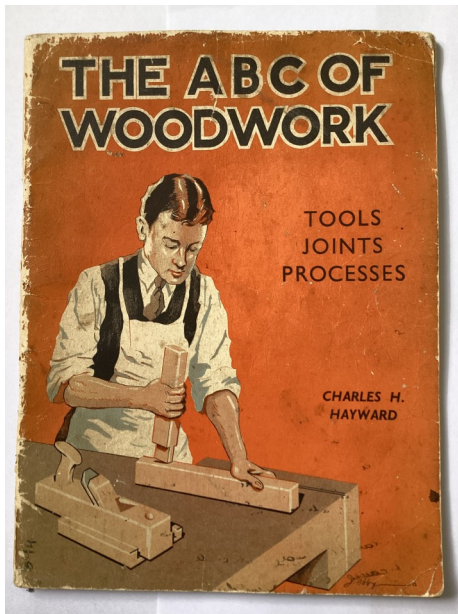
Our last talk of the season will be on **Wednesday 28th September** when the archaeologist **Shaun Richardson** will report on **'Removed and Revealed: Some Effects of the July 2019 Flooding on Archaeology in Swaledale and Arkengarthdale'**. After a brief introduction regarding the frequency of historic flooding in Swaledale and Arkengarthdale, the lecture will deal primarily with the damage caused to lead mining landscapes by the July 2019 flooding and the subsequent recording of what was revealed. Following the course of the flood water, the lecture will commence with the isolated, upland landscapes of Blakethwaite Dams, Faggergill and Washy Green, and finish at Grinton smelt mill, where the results of the internal clearance work that immediately preceded the floods will also be examined.

As ever we are much enjoying our visitors, most notably the celebrated

REETH AND DISTRICT GAZETTE LTD

embroiderer and textile artist Helen Barnes, who led a most enjoyable workshop on English Patchwork Piecing here in the Museum last month. Under her guidance we made a sample of a periwinkle design, based on one of the patchworks in the Collection. Primed by this hands-on experience we then looked at a range of patchworks and quilts in the Museum, from a delicate silk specimen in vibrant blues, red and greens to a hardy hap made from old suiting. We are most grateful to Helen who gave this day free of charge to raise funds for the Museum and all those ladies who attended.

One of our visitors was much taken with our copy of Charles H. Hayward's



The ABC of Woodwork (1945), which he fondly remembered from his childhood. Rather forced into a desk job after school, he returned to Hayward in his retirement and he is happy making

wooden toys to raise money for charity. We much value the memories and stories prompted from engagement with the Museum Collection. Do you have one of yours to add?



We look forward to seeing you at Muker Show on Wednesday 7th September, when as usual we will be in the produce tent, with a range of objects from the Collection.

If you want to sign up for our FREE e-newsletters with latest developments do let us know, and we will put you on the circulation list. Why not become a Friend of the Museum? Excellent idea for a birthday present. Annual membership: single £12.50, couple £20, family £25 gives unlimited free entry to the Museum, discount on talks, and our twice-yearly Newsletter! For more information contact Helen Bainbridge via helen@swaledalemuseum.org or on 07969 823232. Visit our website at www.swaledalemuseum.org

A. HOWARD JOINERY

no job too small
01748 884045
andrewhowardjoinery@gmail.com



Sustainable Swaledale

Arkengarthdale barns makeover

Two cow houses have been restored at Low Eskeleth and Whaw by the Yorkshire Dales National Park Authority (YDNPA) and Yorkshire Dales Millennium Trust with some of the funding provided by Alf Wight's daughter Rosie Page. A panel on Alf Wight AKA James Herriot has been installed at Whaw.

Source: YDNPA website

<https://tinyurl.com/4ceu7bj2>

Hawes to Garsdale recreational route

The YDNPA is investigating converting the old disused railway line between Hawes and Sedburgh to a **multi-user route** capable of being used by cyclists, horse riders and walkers.

Source: YDNPA website

<https://tinyurl.com/4cyxxd7t>

No wolves and lynx under YDNPA nature recovery plan

The YDNPA met on 28 June to discuss its draft nature recovery plan, which will become increasingly important as government and private funding for Dales' landowners and farmers is tied into environmental objectives. The draft strategy includes an increase in woodland from 4.5% to 7% and creating nature recovery areas across 15% of the park. The emphasis will be on supporting struggling species already in the area rather than re-introducing wolves and lynx. The plan is expected

to be finalised next June.

Source: Yorkshire Post

<https://tinyurl.com/ycx6tk2w>

Planning: Local Plan 2023-2040 Consultation no 5

The YDNPA has set out its preferred options for the **New Local Plan 2023-2040**. Included in the proposals is a requirement that all new housing be for permanent residency; all barn conversions should be for local occupancy use; a requirement for new developments to show climate change adaptations; protection for core Dark Skies areas and a revised target of 50 new houses per year.

Additionally all planning applications, even for small projects such as extensions, would be required to submit a Sustainability Statement providing evidence of biodiversity net gain and implement biodiversity enhancement measures such as bird boxes, bee bricks or planting trees. Responses sought by 19th August. The consultation document is available at: <https://tinyurl.com/4t89muwf>

Source: YDNPA website

<https://tinyurl.com/4cs25xsw>

Population statistics

The Office of National Statistics (ONS) has published the **2021 census population** data. Richmondshire is one of only thirteen areas where men outnumber women (51 to 49%) and it is also one of the least densely populated areas with 38 people per km² compared to the average of 395 people. The Guardian reports that Richmondshire has experienced the

REETH AND DISTRICT GAZETTE LTD

highest percentage growth in the share of over-65s in the last 10 years with 23.5% now of pension age (compared with 17.5% 10 years ago) - an increase from 9,076 to 11,700 people and double the 5,481 pension-aged people who lived there in 1981.

Source: ONS and Guardian article

<https://tinyurl.com/2p8bkyy2>

<https://tinyurl.com/b7jukj83>

Swift boxes

Thanks are due to Calvert and Jenkinson, builders, who have installed our first swift box in a Gunnerside property while carrying out renovations. A number of swallow cups have also been installed in Langthwaite as part of the Group's Swift and Swallows project. We would love to add more swift boxes as part of building projects so if you would like to sponsor one, please let us know.

Clickable links available via the Sustainable Swaledale website

Margaret

Sustainable Swaledale Group

Find out more and join in

Meeting: first Thursday of the month at 7pm. Please contact us for venue details.

Email:

info@sustainableswaledale.org

Phone: the Secretary on 886 381

Facebook Group:

Sustainable Swaledale

Website:

www.sustainableswaledale.org where you can sign up to our free newsletters, and choose to support us as a member for £5 per year.



TWISTED
HAIR • NAILS • AESTHETICS

HAIR, NAILS AND AESTHETICS

Aqua Facial
Micro Needling Facial
Scalp Micropigmentation
IPL Laser Treatment
Thread Vein Removal
Skin Tag Removal
Brow Microblading and Ombre
SPMU Eyeliner and Lip
HIFU Skin Tightening

Tel Hawes 01969 667449
info@twistedah.com



Home Run

Pet sitting, House sitting, Dog walking

I offer a friendly, personalised pet and house sitting service in and around Swaledale.

Nicola – 07866 336924
nicola@homerundogsitting.co.uk
www.homerundogsitting.co.uk



R.L.G



Property Services

- Paving • Groundworks • Decorating
- Pressure Washing • Garden Maintenance
- General Repairs & Improvements



0737 607 3816

01748 884 321

Email: Ryang2190@gmail.com



Flocking to the beach in the heatwave, Swaledale style! Photo Mike Joiner

Clarksons

MORE THAN ACCOUNTANTS

Are you looking for more from your accountant?

We believe businesses deserve more than just having their accounts and tax returns filed.

Whatever your accounting or business needs, we offer a personalised service to ensure we assist you in fulfilling your business's potential.

w: www.clarksonsaccountants.co.uk e: info@clarksonsaccountants.co.uk t: 01969 624999

Thornborough Hall, Leyburn, North Yorkshire, DL8 5AB

Follow Us on Twitter @ClarksonsAcct

Find Us on Facebook @ClarksonsAcct

Saving Used Stamps to help the RNIB

I would like to thank you all again for the stamps you save as every stamp helps.
Please remember to leave the stamp on the envelope and cut leaving at least 1cm around the stamp. If the perforations around the edge are damaged they have no value.
Alternatively just tear with a generous amount around the edge of the stamp and I will trim them.
I recently sent off a box of stamps, the first for a while, which made £86.17 for the RNIB.
Many thanks again and to Reeth Post Office, Swaledale Woollens and Muker Stores for being the drop off points and also Wobbly Dog in Leyburn.

Sue Thompson 01969 624962

SWALE HAIR SPA

LOOK GOOD. FEEL GREAT. BE-WELL.

Our 'beautiful dales' Hair salon offering our usual high-quality hairdressing services as before. Plus exciting new well-being treatments launched last month.

Make an appointment to experience our new look salon in Reeth.



www.swalehairspa.com
info@swalehairspa.com
01748 884627

.....Formerly known as

The Hair Salon

P Bellwood

Joinery and Building Services

Quality, Local, Reliable Time-Served Craftsman

www.paulbellwood.co.uk

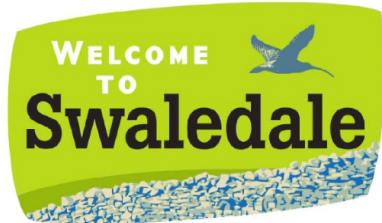
07964 051 004

paulbellwood@aol.com

Bespoke Joinery
UPVC & Timber windows and doors
Kitchen Fitting
Decking
Plastering
All aspects of building work



Fully insured.
References available on request.



S A B F

Swaledale & Arkengarthdale Business Forum

Members, get assistance to enhance or update your entry
Non-Members, send your details for a basic entry

visit our website
www.swaledale.org

Packed with useful information for visitors and locals alike, including a comprehensive services directory

Keld Chapel Minister in Residence

From Sunday August 28th until Saturday September 3rd, Revd Trevor Pitt will be serving as minister in residence at Keld.

He invites you to join him at the following:

- Sunday worship at Low Row URC (10.30am) and Keld URC (2.00pm)
- Morning and evening prayer, each weekday at 9.00am and 6.00pm (lasting 15 mins!)
- A study day on Thursday September 1st entitled "Looking at Green Theology"

The study day will be from 10.30am till 3.00pm. Drinks will be provided and you are invited to bring your own picnic. The cost is £10.

From August 29th to 31st, his wife Linda will be holding an art exhibition. Trevor will also be available for pastoral conversations either at the manse or in your own home.

Morning and evening prayer will take place in Keld Chapel. Other events will take place in the Upper Room and the Old School

Do come along. They would both love to see you!

PS . There will also be another study day on Saturday August 6th. This will be led by the Revd. David Wood, entitled "Seeking the Ancient Paths". It will explore some spiritual wisdom from the Old Testament relevant to today's world. The same terms and conditions apply!

David Wood

NORTHERN WALLS

DRYSTONE WALLING & LANDSCAPING

Former National Trust
gardener with 20 years
experience
City and Guild Certificate in
Horticulture

www.northernwalls.com

Tel 0795 148 1239

Ellerton Abbey Antiques & Mrs Pumphrey's Tearoom

Ellerton Abbey, Richmond,

N Yorks DL11 6AN

Antiques & Collectables

Bought & Sold

Tearoom open Thursday,

Friday & Saturday

10.00am - 4.00pm

01748 884321

07971 060590

nicklambert2013@gmail.com

REETH AND DISTRICT GAZETTE LTD



Why not join us this September ?

The Station Singers are three community choirs, two of which are based at The Station, Richmond on Wednesday mornings and the third at the Town Hall on Thursday evening. Our new term starts on 14th and 15th September, there is no audition and anyone who likes to sing is welcome to join. Our Christmas Concert will be on Saturday 10th Dec. 2022 in aid of local charities.

Platform 1 - Wed. 14th Sept. from 9.30 until 11.00 at The Station

Platform 2 - Wed. 14th Sept. from 11.30 until 13.00 at The Station

Branch Line - Thurs. 15th Sept. from 20.00 until 21.30 at Town Hall

Just turn up for a taster session (£5) and we hope that you will become part of our community. The autumn term fee is £60. 50% bursaries are available on application.

Visit www.richmondstationsingers.co.uk for further details.

We look forward to welcoming you into one of our choirs.

Helen David

M. GUY - PLUMBING

For all your plumbing requirements

AGAS & RAYBURNS SERVICED

kathrynguy@designermakersmarket.co.uk

jmpybus@googlemail.com. Stubbing farm, harkerside."/>

J.M. PYBUS
Purpose Made Joinery
EST 2001

24 year's experience working within the Dales
Qualified joiner covering all aspects of joinery

Made to measure

- Sash Windows specialist
- Windows / doors
- wardrobes
- staircases
- kitchens
- 1st / 2nd fix works
- flooring (hardwood, softwood, engineered)

Contact John Pybus
mobile: 07764318726
Email: jmpybus@googlemail.com
Stubbing farm, harkerside

jtremedialmassage@gmail.com. www.jtremedialmassage.co.uk"/>

Aches & pains?
Remedial massage can help...

Treatment for musculoskeletal conditions & injuries, headaches, stress and anxiety

Jennifer Thursfield
Remedial Massage NAMMT CNHC
Tel: 07889 546608 • Based in Richmond
jtremedialmassage@gmail.com
www.jtremedialmassage.co.uk

tonyfava@hindsightaccountants.co.uk"/>

Hindsight
Accountants LLP
Tony Fava FCA

- Bookkeeping, Payroll and VAT Returns
- Annual accounts and tax returns
- Company Formations

11 Finkle Street, Richmond, DL10 4QA
Tel: 01748 822049
Email: tonyfava@hindsightaccountants.co.uk



The destination on
your doorstep!

Historic House - Tea Room - Gardens

Great Value Tickets Valid for 12 Months!

Open 6 Days a Week (closed Thursdays)

www.kiplinhall.co.uk

Nr Scorton, Richmond, North Yorkshire, DL10 6AT

01748 818 178 info@kiplinhall.co.uk



Reg. Charity 1155907 (Opening times correct at time of printing but may be subject to change)



Kiplin Hall
& Gardens



REETH POST OFFICE

More than just a Post Office

Its a 25+ miles round trip to
the big shops.



SERVING OUR COMMUNITY

www.reethpostoffice.co.uk

D. J. OLNEY

Painter & Decorator

Interior & Exterior

Call

01748 825472 or

07801 026 006



Bespoke
Tutors

**Maths , Science,
English Private
Tutors**

Gaynor Voice & Kate

Brown Hill Top
Low Row
Richmond
DL11 6NB

Tel. 01748 886201

Email: bespocketutors@gmail.com

www.bespocketutors.org.uk

Leyburn Arts Centre

The Knit'N Natter group at Leyburn Arts & Community Centre are busy knitting and crocheting Poppies for the British Legion display being planned for Leyburn. If anyone would also like to contribute they could drop their poppies into the Centre, or to the British Legion, or join the sessions which meet on a Wednesday fortnightly from 7pm - 9pm, coffee and biscuits included, fee £2 towards the Arts Centre's funds.



For future dates of Knit'N Natter contact 01969 624510. Some of the regular groups who meet in the Arts Centre are now stopping for summer holidays and will resume in September.

On www.leyburnartscentre.com you can find details of all films, groups and events, or pop in to collect a flyer. Don't forget An Audience with Lucy Adlington, on Saturday 6th August at 2pm with her moving but uplifting historical talk on 'The Dressmakers of Auschwitz.' Tickets are £12, and include coffee and biscuits.

Jeannie Bishop



LIBERTY
FABRIC

Quality fabrics for quilting, dressmaking, etc., sewing kits & accessories, plus wool/yarn.

Abbotstone House Collection,
Little Shop on the Hill, Hawes.

☎ 07921 058803/01969 667988

Fremington Village Hall

Redecorated and now with it's own piano, the Village Hall (known locally as the Sunday School) is available to hire for all kinds of events, from regular classes, talks and community activities, to one-off functions like children's parties, lunches and dinners and special occasions such as wedding receptions and anniversary parties. The Hall has a small kitchen with electric cooker and microwave; toilet facilities including disabled toilet; and a small rear garden.

The Hall is a registered charity run by a small and dedicated volunteer committee. You can book the Hall by phoning or texting the bookings secretary **Alison Tupman** on **07967 839494** or by email at fremingtonvillagehall@outlook.com

Geoff Braithwaite

Property Maintenance & Painting and Decorating

Tel: 01748 886 783

Mob: 0789 106 3546

Email:

geoff@mukerchapel.o.uk

VICTORIA COTTAGE

Lovely Period Cottage
Overlooking Reeth Green
Great Views. Sleeps 4

Email:

judy.roger@btinternet.com

Website:

www.victoriacottagereeth.com

Music & Mezze at Two Dales Bakery

We're delighted to be hosting a series of acoustic music nights this summer. Enjoy great vocalists and songwriters from Yorkshire (and just beyond!), in the relaxing surroundings of Two Dales Bakery.

**Tuesday 12th July - Broadside Boy,
Eric Sedge**

Tuesday 16th August - Carrie Martin

**Tuesday 27th September - The
Gillespie Brothers**

Doors open 18:45. Bottle Bar.

TICKETS - £15 including mezze nibbles
- available from Two Dales Bakery
or hello@twodalesbakery.co.uk



Dales Reyno-Vations



General Building & Maintenance

Property renovations / Roofing

Kitchen fitting / Joinery

Bathroom suites / Tiling

Painting & Decorating

Patios / Landscaping / Ground maintenance

Free estimates / Insurance quotes

No Job too small

D Reynoldson

11, Place Hill, Reeth, Richmond

North Yorkshire, DL11 6SD

01748884309 / 07792458801

Email: david.reeth1@outlook.com

SWALEDALE

'POTTING ON THE NEXT GENERATION IN THE TWO DALES'



PLAYGROUP

Find us on Facebook – Search Seedlings Reeth

REGISTERED CHARITY No- 1045715

Swaledale Seedlings playgroup

'Stay and Play' Sessions

Mondays at Gunnerside Village Hall

& Thursdays at Reeth Memorial Hall

9.30am until 11:25am

Open to all children under the age of 5

£2 per child per session

Pop into a session or message us on Facebook
for further information

Help for farmers, by farmers

UK farming is facing a perfect storm. Costs of inputs (for example fertiliser, pesticide and fuel) are soaring, weather patterns (and the climate) are changing and there is a new funding system for farmers to get used to.

You may have heard of 'regenerative' farming, whereby food production is integrated with nature so helping to build up local food systems. It can reduce inputs (and bring down costs), increase profitability and future-proof farm businesses. It suits upland livestock as well as market gardening and arable.

The Northern Real Farming Conference (NRFC) supports regenerative farming. With support from WWF-UK's Land, Food and Farming Fund, we have made a series of videos which show farmers talking about their experiences and offering concentrated practical advice on the profits and pitfalls of changing land management methods.

In 'Three Regenerative Farming Projects', Cumbrian farmers talk about how they have changed to 'rotational grazing' of sheep and cows - moving stock every day or two and letting the grass regrow - and how they now don't buy in feed or fertiliser and their farms are in profit.

'Local Wool and Textile Production' tells the stories behind new Lake District tweeds, a British wool database for weavers and knitters and yarn making from sheep local to the shop.

The videos are available at www.northernrealfarming.org/video-resources/ and they are really worth a watch even if you don't farm yourself!

Andi Chapple



Visitor Centre Open Daily

Calvert's Restaurant

New Summer menu

2 courses £14.95 | 3 course £19.95

1897 Coffee Shop

New dog friendly garden area

Cheese Shop & Experience

Daily demonstrations & sampling

New 'Taste of Yorkshire' area

Launching 28th July

wensleydale.co.uk



SWALEDALE MUSEUM REETH

DISCOVER THE SECRETS
& STORIES OF THE DALES

OPEN: June to September

Monday - Thursday

10.00 am to 5.00 pm

www.swaledalemuseum.org

DL11 6AX

Wensleydale Concert Series

On Sat August 13th we are excited to welcome back pianist Mark Viner. Mark is a truly international pianist. He is chair of both the Liszt and Alkan Societies and is an amazing ambassador for their work. It takes a very accomplished pianist to make such difficult music sound both beautiful and easy! On his last visit to Wensleydale he really wowed the audience - and you can check out his playing on our own YouTube channel (just search for "Wensleydale Concert Series").

His reviews are impressive:

"[...] beguiling [...]" - The Guardian

"[...] he is undoubtedly one of the most gifted pianists of his generation [...] a supple, virtuosic player who seems to turn every technical challenge into a musical asset, excelling in repertoire that few others have touched." - International Piano Magazine

"[...] clearly he's got about three hands [...] incredibly impressive playing" - BBC Radio 3 (Record Review)

"from Viner's fingers the iridescent showers of notes cascade with scintillating exuberance [...] a blazing young British talent" - Gramophone Magazine

For this concert he is playing music by Chopin, Faure, Beethoven, Alkan and Liszt - a not to be missed event.

Full details and tickets are available on our website www.wensleydaleconcertseries.co.uk or call Carol Haynes or Liz Sowter on 01969 663026

Tickets are available by telephone on 0333 666 3366



Music Tuition for all ages with
www.colinbaileymusic.co.uk
07711 211169

Drums & Percussion; Vocals;
Piano & Keyboards; Music Theory;
'Get Musical' Workshops.

Lady Interior Decorator

Painting & Decorating, Competitive rates

Established 30 Years

Call Yvonne on: 07838378836

Based in Richmond

**NYCC HOME LIBRARY
DELIVERY SERVICE**

We deliver books, audiobooks, DVDs and information to the homes of people who find it difficult to get to their local library.

If you are interested in receiving monthly deliveries please contact

North Yorkshire Libraries
Headquarters on
01609 533800

Or Catterick Garrison Library
on
01609 534595

**Hand Dyed Yarn
and other lovely things.**

Unit 4, Reeth Dales Centre
Silver Street, Reeth
DL11 6SP

Tel: 01748 282 977
info@swaledaleyarns.com
www.swaledaleyarns.com



SWALEDALE
YARNS

VICTORIA DESIGN GROUP LTD
Consulting Civil & Structural Engineers

**Consulting Structural & Civil
Engineers**

*Structural Surveys
All design work undertaken
whether domestic or commercial,
large or small*

Telephone: 01748 886717
Email: office@vdg.co.uk
Website : vdg.co.uk

**CHARMING OLD COTTAGE IN THE
CENTRE OF REETH (sleeps 6+)**

Open fire & background heating.
Fully fitted kitchen, dishwasher, fridge/
freezer.

2 bathrooms, 2 double bedrooms, 1 twin bed-
room & attic play area/fourth bedroom with 3
single beds.

Private, secure, rear courtyard area.
Dogs welcome.

Contact Denyse on 01325 722786 or
e-mail denyse00@btinternet.com



**WOULD YOU LIKE
TO BE A FRIEND
OF MARRICK
PRIORY?**

We would heartily welcome anyone who would have the time to volunteer and help us raise money for bursaries for this unique charity.

We hold five events a year and meetings are held at Marrick Priory prior to events.

It's a very friendly team and we have great fun and get great satisfaction from our work.

If you can bake that's great but not essential at all!

If interested, please ring 01748 886763
or email kathymeacock@gmail.com

REETH AND DISTRICT GAZETTE LTD

Church Opening Times and Services in August

7th Aug	9.15 am	St. Mary's Muker	<i>Eucharist</i>
	10.00 am	St Joseph & Francis Xav. Richmond	<i>Mass</i>
	10.30 am	Low Row URC	
	11.00 am	Holy Trinity Low Row	<i>Eucharist</i>
	11.00 am	St. Edmund's, Marske	<i>Holy Communion</i>
	11.00 am	Reeth Evangelical Congregational	
14th Aug	9.30 am	St. Andrew's Grinton	<i>Eucharist</i>
	9.30 am	St Michael's Downholme	<i>Morning Prayer</i>
	10.00 am	St Joseph & Francis Xav. Richmond	<i>Mass</i>
	10.30 am	Low Row URC	
	11.00 am	Reeth Evangelical Congregational	
	11.00 am	St. Edmund's, Marske	<i>Holy Communion</i>
	11.15 am	St. Mary's Arkengarthdale	<i>Holy Communion BCP</i>
	6.30 pm	Reeth Evangelical Congregational	
	6.30 pm	Gunnarside Methodist	<i>Holy Communion</i>

Religious Society of Friends (Quakers)

Quaker House, 7 Grove Square, Leyburn every Sunday at 10.30 am
The Scout Hut, Quakers Lane, Richmond 2nd and 4th Sundays at 10.30am
www.dalesquakers.org.uk

Church of England

Reverend Caroline Hewlett
Vicar of the Parish of Swaledale with Arkengarthdale
01748 884 706 carolinejhewlett19@gmail.com

REETH AND DISTRICT GAZETTE LTD

Church Opening Times and Services in August

21st Aug	9.15 am	St. Mary's Muker	<i>Holy Communion BCP</i>
	10.00 am	St Joseph & Francis Xav. Richmond	<i>Mass</i>
	10.30 am	Low Row URC	
	11.00 am	Reeth Evangelical Congregational	
	11.00 am	Holy Trinity Low Row	<i>Eucharist</i>
	11.00 am	St. Edmund's, Marske	<i>Holy Communion</i>
	6.30 pm	Reeth Evangelical Congregational	
28th Aug	9.30 pm	St Michael's Downholme	<i>Holy Communion</i>
	9.30 am	St. Andrew's Grinton	<i>Eucharist</i>
	10.00 am	St Joseph & Francis Xav. Richmond	<i>Mass</i>
	10.30 am	Low Row URC	
	11.00 am	Reeth Evangelical Congregational	
	11.00 am	St. Edmund's, Marske	<i>Holy Communion</i>
	11.15 am	St. Mary's Arkengarthdale	<i>Holy Communion BCP</i>
	2.00 pm	Keld URC	
	6.30 pm	Reeth Evangelical Congregational	
	6.30 pm	Gunnarside Methodist	

United Reformed Church
G Edward Brown 01748 886 181
edwardbrown@f2s.com
And Sue Alderson 01748 886292
Susana@swaledale.org

Methodist
Reverend Julie Reid
Minister for the Two Dales
01748 823 149
Rev.julia.reid@gmail.com

**Reeth Evangelical Congregational
Church**
The Revd David Levell
07582 575 815
www.reethecc.co.uk

Roman Catholic
Cannon Michael Loughlin
01748 822 175
www.stjosephsfx.co.uk

REETH AND DISTRICT GAZETTE LTD

Muker Parish Council Minutes of Meeting 19th May 2022

Present: Cllr Calvert, Cllr Reynoldson, Cllr Metcalfe, Cllr Porter and Cllr Whitehead presiding.

Apologies: Cllr McMullon, Cllr Peacock.

Clerk: Michael Cleminson

Election of Officers and Declaration of Acceptance of Office

Chairman: Cllr Whitehead - (Prop Cllr Reynoldson - 2nd Cllr Porter & Cllr Metcalf), Vice Chair: Cllr Calvert - (Prop Cllr Metcalf 2nd Cllr Reynoldson), Treasurer: Cllr Calvert- (Prop. Cllr Metcalf 2nd Cllr Reynoldson)

Matters Arising:

Buttertubs signage Ian Beighton is going to visit the site and identify suitable locations for erection of the signs, A grant of £500 has been secured.

Permission sought for the **erection of a memorial bench** on Occupation Lane, Muker. Decision: clerk to refer the matter to Muker Commons Committee via Adam Hunter.

Finance:

The Financial Risk Assessment was reviewed, all members agreed all risks were appropriately addressed.

The Certificate of Exemption and Annual Accounts were read out by the Chairman all were in agreement and documents signed by the Chair and Treasurer.

The Notice of Public Rights and annual governance and Accountability was set for between Monday 13 June and Thursday 29 July 2022.

Locality grant of £500.00 for the Buttertubs signage was signed by the Chairman and Cllr Metcalf.

A cheque and order to pay were signed for the purchase of new Defibrillator pads for Keld.

Highways:

Hoggarths Bridge it was noted that works are underway until 27 May 2022.

The washed away roadside between Hoggarths and Pry House: there is now an order in place to tarmac as a longer term solution. Damage again reported to Police, it is not feasible to trace vehicle and driver.

Cliff Gate road junction, drainage

There is no evidence that any part of this drainage system has collapsed. Cllr Reynoldson stated that the damage was below the large manhole adjacent to the road. Clerk to contact Highways to update them.

Request for installation of a **crash barrier on Cliff Gate Road** Unfortunately this would be considered a highway improvement. Regrettably funding for highway improvements, such as vehicle restraint systems is extremely limited and therefore must be targeted at sites where there is a history of personal accidents occurring, which thankfully is not the case at this location.

Potholes on the Satron to Askrigg Road

- this area has been inspected and whilst the road is showing signs of wear, no defects identified that meet the current intervention criteria for attention. Cllrs repeated again that there are numerous potholes and the road is breaking away at the side in places.

Gutter and offsets on Crow Trees Hill

These are the responsibility of the adjacent landowner to maintain.

REETH AND DISTRICT GAZETTE LTD

Cllr Porter advised that this work had been previously undertaken by Highway. Cllrs stated that although not a major problem yet it will soon become one and preventative action now may alleviate a future major repair. Clerk to report to Cllr Peacock.

Richmondshire D.C.:

Regarding a defective light in Muker and a light in Thwaite requiring diffusing Cllr McMullen is waiting for a response.

NYCC: Nothing to Report

YDNPA:

R/06/265A Full planning permission for extension of existing dwelling into adjoining barn; change of use of land to domestic use and creation of parking area at KISDON COTTAGE, MUKER, RICHMOND, DL11 6QL. The Yorkshire Dales National Park Authority has received the above application. The Parish Council support this application. Clerk to submit comments.

R/06/202C Oxnop Ghyll, Gunnerside. Planning Appeal. Noted by Cllrs there are no additional comments to the original objections submitted.

YLCA: Nothing to Report

Correspondence/AOB:

Rally the Globe Passing through Parish 25- 27 July 2022 INFORMATION ONLY

Date and Time of Next Meeting:
7.30pm Thursday 23 June 2022

Cosy Holiday Cottage

Attached to owners' farmhouse on hill farm in Arkengarthdale. Sleeps 2. No pets. E.M. on request.

Mrs Gladys Atkinson
Tel. 01748 884550

Support the Reeth & District Gazette

Order your printing from us and we will credit 10% of the value of your order to the Gazette account at no extra cost to you!

Quote Gazette when ordering

Booklet Printing

- Reports
- Manuals
- Brochures
- Catalogues
- Newsletters



Saddle Stitched - Perfect Bound - Wire Bound

From your computer files or hard copy

NCR set Printing

- Invoices
- Estimates
- Order Forms



Fast Turnaround - Padded - Loose Sets



**Reflections
PhotoGraphic
Services**

Tel: 01833 690733

www.refprint.co.uk

email: sales@refprint.co.uk

Should All New Homes be Permanent Homes?

Last year, local residents successfully lobbied alongside Reeth Parish Council to reverse a decision that would have seen Reeth's status as a 'service centre' removed, leaving the two dales without a community focal point in the National Park's new Local Plan.

A small success maybe, but it shows that it is worth speaking out constructively and that the authorities do sometimes listen.

The 'preferred options' for the new Local Plan have now been published (as consultation no. 5) and one of the key proposals is for all new housing development in the National Park to be for permanent occupancy only.

Back in June, the people of Whitby held an informal parish vote in which residents voted overwhelmingly to ban new houses from being used as second homes or holiday lets, instead restricting them to full-time local occupation as a primary residence.

Whitby's vote was not binding, but in the Dales we have the opportunity to endorse the National Park's preferred option with the aim of having it formalised within the new Local Plan - meaning that it would become policy.

It's important to note that this measure is not anti-second home or anti-holiday let - it doesn't apply to existing properties and the number of new homes to be built in the Dales

is relatively small by comparison (there is a target of fifty per year across the whole National Park). It is simply saying that when new homes are built they should be reserved for full-time Dales' residents.

'Permanent Occupancy' is not the same as 'Local Occupancy' as it wouldn't prevent people from outside the area moving here permanently, although single site developments would be targeted at local people and first-time buyers under the proposed options.

The proposals also include minimum numbers of rental properties and smaller properties (with one or two bedrooms) for multi-unit developments.

The permanent occupancy proposal will be too strong for some people, and not strong enough for others. You can let the National Park know whether (or not) you approve by emailing localplan@yorkshiredales.org.uk before 19th August, including your name and address and stating your views on whether new homes in the Dales should be for permanent occupation only.

There is a range of other measures in the preferred options, and if you're interested, you can see the whole document by searching online for 'yorkshire dales consultation 5'.

The new Local Plan will apply from 2023 to 2040 and will form the basis for all planning decisions within the National Park.

Rob Macdonald

REETH AND DISTRICT GAZETTE LTD

Property Maintenance & General Building

Building work & property maintenance
undertaken

Plumbing, tiling, plastering
Kitchen & bathroom fitting

Joinery works

Small jobs welcome

Free No Obligation estimates

Also detail plans prepared for planning
applications

Contact Gary

Tel. 01748 886691 / Mob. 07896
147207

E-mail Swaddyman@gmail.com

Langthwaite - Arkengarthdale

RED LION INN

Free House

Real Ales – Bar Snacks

Books & Maps

Tel. 01748 884218



NEW CAR?

We probably can - most makes.

USED CAR?

We surely can - thousands to choose
from

LCV / DOUBLE CAB?

Of course we can - new or used.

FINANCE?

We certainly can.

PCP Contract Hire

Lease Purchase

Hire Purchase

Part exchange welcome.

Jed Collins, Bridge Garage, Reeth

01748 - 884245

Service MOT Parts Tyres Bodywork



- Carpets • Wood Flooring • Laminates
- Vinyl Tiles • Vinyl Sheets • Rugs • Accessories

nh flooring

*The Carpet
& Flooring
Specialist*

- Amtico
- Karndean
- Panaget
- Brintons
- Westex
- & more

nicf
national institute of carpet & fitters

Contact us now for a **FREE** quote, advice or more information

t: 01748 822834 m: 07789 996526

e: enquiries@nhflooring.co.uk

w: www.nhflooring.co.uk

Unit 6 Borough Court, Borough Road, Gallowfields Trading Estate, Richmond. DL10 4SX



REETH AND DISTRICT GAZETTE LTD



SWALEDALE

In an emergency DIAL 999 ask for the POLICE then Mountain Rescue / Cave Rescue / Mine Rescue

Charity No. 501885, providing Mountain and Cave Rescue in the Northern Yorkshire Dales

The team is made up of highly trained volunteers available, 24/7 in any weather, any time.

Mountain & Cave Rescue Team

Incidents June 9th to July 9th

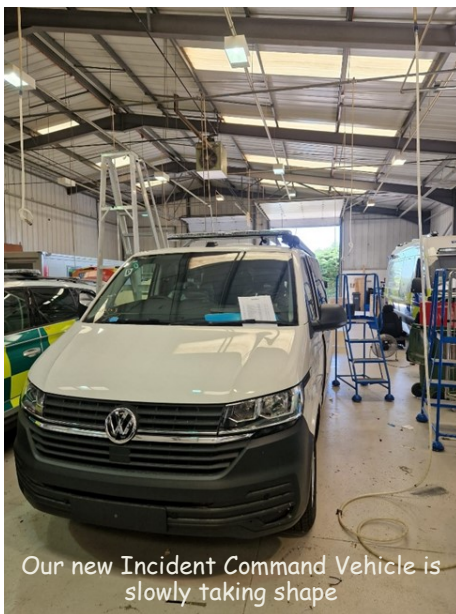
6 Incidents this edition

On average we respond to between 50 to 60 calls each year.

Incident 24: 02/07/2022: Called by the Police following reports of an overdue caving party exploring Sir Francis mine level. As local team members had set off the overdue party turned up safe and well

Incident 23: 26/06/2022: Called by the Police to search for a missing vulnerable person. Quickly located by police officers and then recovered to safety by first team members.

Incident 22: 16/06/2022: Called again to assist with the rescue of an injured walker in Hackfall Woods. As we only had a few members immediately available we asked Upper Wharfedale Fell Rescue Association (UWFRA) and RAF Leeming Mountain Rescue Team to give us a hand. Great multi-agency effort including the crews from the Yorkshire Ambulance Service NHS Trust. Thanks also to The Tan Hill Inn for letting us run control from their restaurant.



Our new Incident Command Vehicle is slowly taking shape

Incident 21: 14/06/2022: Called to rescue a lamb trapped in a culvert, after a bit of digging the lamb was rescued safe and well.

Incident 20: 13/06/2022: Called by the Ambulance service to rescue an injured walker on our Eastern boundary with Cleveland Mountain Rescue Team.

REETH AND DISTRICT GAZETTE LTD

Given the location both teams responded along with Teesdale and Weardale Search and Mountain Rescue Team on standby to assist too. Casualty evacuated to the ambulance.

Incident 19: 10/06/2022: Our 3rd Call this week. Called by the Ambulance Service to rescue an injured walker near Stalling Busk, above Semer water. Treated on scene by the Air Ambulance & then assisted to the helicopter.

You can now donate while spending at Amazon SMILE. Just log in to Amazon Smile when you next spend and select Swaledale Mountain Rescue as your charity.

Swaledale Mountain & Cave Rescue Team

Carvoeiro, Algarve, Portugal

Spacious well-equipped ground floor apartment, sleeps 5.

Quietly situated on a small low-rise development with five pools.

Within strolling distance of this vibrant, friendly village with it's lovely beach and lots of excellent restaurants. Golf, tennis, walking or just lazing by the pool.

Wood burning stove for cosy winter lets.

**Please contact Lee on 01969 326169
Email: lee.lowther30@googlemail.com**

STURDY TRAVEL

INDEPENDENT TRAVEL SPECIALISTS

Now at 1 Golden Lion Yard
Market Place, Leyburn DL8 5AS

For all your travel needs, home and abroad

Call: **01677 422826**

Email: robert@bakewelltravel.co.uk



Part of Bakewell Travel



S.J.R Plumbing Services

For all of your domestic
Plumbing requirements.

C & G/Advanced C & G Qualified

Reliable With Very Competitive Rates

Based in Reeth

01748-884036

Or 07977-297563

G E BROWN & SON BUILDING CONTRACTORS

All Building Work Carried Out
Damp Proof Course & Timber Treatment
Specialist Joinery Work
Work carried out by time-served qualified craftsmen

Email: gebrownson@f2s.com
Telephone: 01748 886356

Reeth Memorial Hall

Friday 12th August 8pm - Laura Cortese & the Dance Cards from Belgium & the USA. American fiddler and smoky-voiced singer-songwriter Laura Cortese and her band pair string arrangements with rich vocal harmonies to create a bold sound, incorporating everything from traditional melodies to Cajun two-steps with a touch of rock-n-roll. Tickets **£15** (£17 door).

Saturday 8th Oct 8pm - John Tams. Please note tickets are selling fast. Tickets **£20**. We don't expect any to be available on the door.

Friday 14th Oct 8pm - Andy Irvine is one of the great Irish singers, musicians and teller of tales. In a career spanning over 50 years he has performed with Sweeney's Men, Paul Brady, Patrick Street, Mozaik and Usher's Island. Tickets **£15** (£17 door)

Tickets from Reeth PO or phone John Little (01748 884759) or visit www.reethmemorialhall.co.uk - tickets $\frac{1}{2}$ price u16s. All concerts 8pm. Doors open 30 mins before start time.

GREEN COMMERCE LTD.

Established for over 35 years

Best quality hardwood logs

Kindling sticks also available

Free Local Delivery

Call David Fenwick on

Tel: 01833 650151

Mob: 07921 317630



M.W Waste Services

Environmental & Drainage Specialists

Septic Tanks Emptied & Cleaned
Blocked Drains Cleared Fast
Grease Traps & Interceptors Emptied
Soakaways Rebuilt & Repaired
Gully Emptying & Street Cleaning
Refuse Collection
Septic Tanks Installed
High Pressure Drain Jetting
Mobile Steam Cleaning
Sewage Plant Maintenance
Industrial & Domestic Work Carried Out

Low Hang Bank Depot: **Tel: 01325 377860/377850**
Melsonby
Richmond
North Yorkshire
DL10 5NQ
24/7 Call Out
[Http://www.mwwaste.co.uk](http://www.mwwaste.co.uk)

Clear Your Blocked Drains Fast With Our High Pressure Jetter
Free Quotes & Estimates

J. N. & E.

Capstick

INSURANCE CONSULTANTS

A local company small enough to care, but big enough to compete

FARM - COMMERCIAL - HOME - MOTOR INSURANCES

Kirkby Stephen 017683 72285 - Sedbergh 015396 20124

Email: sales@capstickinsurance.co.uk

www.capstickinsurance.co.uk

CIR **WINNER**
COMMERCIAL
INSURANCE
AWARDS 2017
BROKER CLAIMS TEAM
OF THE YEAR

50
YEARS
TRADING FROM 1968 TO 2018

J N & E Capstick Insurance Consultants are authorised and regulated by the Financial Conduct Authority



RM KITCHENS AND BATHROOMS
Joinery & Plumbing
Tel: 07375397511



NORMAN F. BROWN

Est. 1967



SALES - LETTINGS - MANAGEMENT
FREE 'NO OBLIGATION' MARKET APPRAISAL AVAILABLE
UPON REQUEST

6 Bridge Street
Bedale
DL8 2AD
01677 422282

bedale@
normanfbrown.co.uk

14 Queens Road
Richmond
DL10 4AG
01748
822473/822967

richmond@
normanfbrown.co.uk

25 Market Place
Leyburn
DL8 5AS
01969 622194

leyburn@
normanfbrown.co.uk

www.normanfbrown.co.uk

Orchard Caravan Park

Idyllic setting in the market town of Reeth, nestled next to the river Swale in the heart of beautiful Swaledale.

Orchard Caravan and Camping Park is the ideal location for a tranquil and relaxing break, or for those who seek an active holiday to enjoy walking and biking.

Static Caravan Hire

Camping pod hire

Touring, motorhome & Camping welcome

Email: Office@Orchardcaravanpark.com

Facebook: [@Orchardcaravanparkreeth](https://www.facebook.com/Orchardcaravanparkreeth)



2Dales Digital

Family Business to Support
you at home



Need help or friendly advice

Call Mike & Anne on:

01748 884737

Email us at:

mikebarden@yahoo.com

See us at website:

www.2dalesdigital.co.uk

**Local Support for your
Desktop, Laptop, Tablet
& Console Issues.**

**Windows, Apple,
Android, Playstation
and Xbox Supported**



KARL LONGDEN PLUMBING

Reeth, North Yorkshire

karllongdenplumbing@yahoo.com

Tel. 01748 880364

Mob. 07969 329893

24 HOUR CALL OUT SERVICE



CALVERT & JENKINSON LTD

— Building Contractor —

All Aspects of building work carried out from renovation to new builds, plastering to roofing.

www.cjbuildersltd.co.uk

cjbuildersltd@gmail.com

Andrew: 07837955869

Ryan: 07968463840

Linzi ordained in Ripon Cathedral

Ripon Cathedral was well visited in June by Swaledale people. First was the Swaledale Festival gala concert performance of Handel's *Messiah*, which went down a storm.



Then on 25th June Linzi Blundell was ordained priest, along with four other ordinands who have gone through their training together. Linzi has been the curate of Swaledale with Arkengarthdale for a year and the parish has benefitted hugely from her hard work, humour and spirituality. So it wasn't surprising that a busload of Swaledalians (if there is such a word) and Arkengarthdalians as well as several carfuls turned up in Ripon to support Linzi on one of the most important days in her clerical life for the very moving service of ordination. Linzi was also supported by a group of

friends - and this may have been a first for a Cathedral - who are all wild swimmers. Regularly they brave sub-zero water temperatures, plunging into lakes, rivers and waterfalls for an invigorating aquatic experience.

While some may question their sanity, the Bishop of Ripon was clearly impressed by their bravery and

hardiness, as she specifically mentioned them in the service.

Though she didn't ask if she could join them...

The following day saw more celebrations, this time in the Vicarage garden, when we

partied to celebrate not only her ordination but also a significant birthday that had occurred earlier in the month.

Elizabeth Bedford





First Affordable Housing Project gets off the Ground

As some readers will know, the Upper Dales Community Land Trust (UDCLT) was formed in 2017 by a group of concerned Upper Dales residents and local council members. They recognised that there was, and is, a critical shortage of affordable, sustainable housing for people born, living or working in the Upper Dales. This affordable housing shortage is particularly impacting young people and there has been a lot of coverage recently in the regional and national press exploring the issues. The UDCLT wants to do what it can to change this trend in the Upper Dales, so that the unique communities, with their history and legacy, live on.

The exciting news is that the UDCLT has bought the former Bainbridge Methodist Chapel in Upper Wensleydale to renovate and convert into two affordable and sustainable apartments. They will be let specifically to local people living and working in the remote Upper Dales.



Methodist Chapel in Upper Wensleydale to renovate and convert into two affordable and sustainable apartments. They

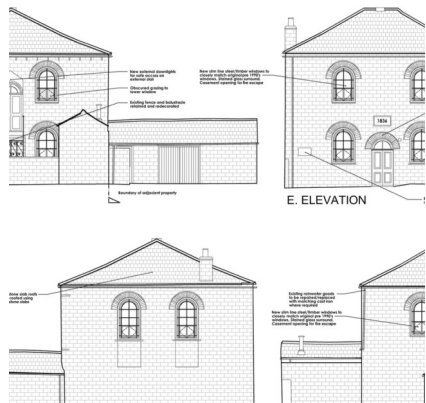
The Trust were disappointed, along with many in the community, when their

bid to purchase Arkengarthdale School was unsuccessful so this new project (and others being considered which are more local to Arkengarthdale) allows them to move forward positively in their affordable local housing mission.

Stephen Stubbs, Chair of the Trust said: "Whilst the Chapel will only provide two new homes for local people, it is a start and we have other possibilities in the pipeline too. We are very grateful to Richmondshire District Council for supporting us with funds, and to the Methodist Circuit for allowing us to buy the Chapel. We recognise that the hard work is just starting!"

The group hope to have the properties ready for occupation in 2023. Anyone wanting more information or interested in supporting the UDCLT should email UDCLTrust@gmail.com or visit www.udclt.co.uk. If you would like to find out more about community land trusts visit www.communitylandtrust.org.uk.

Anne Wallace, Upper Dales Community Land Trust



REETH AND DISTRICT GAZETTE LTD



We're Recruiting!
**NEW PAY RATES &
BENEFITS!**

Part-time & full-time positions

Visitor Centre Vacancies
HSE Support Coordinator
Cheesemaker
Water Treatment Operative
Production Operatives
NPD Vacancies

Find out more at
wensleydale.co.uk/work-with-us

R. & W. GIBSON & SON Ltd.

**CERAMIC WALL
& FLOOR TILERS**

SHOWROOM NOW OPEN

Monday - Friday: 9.00am - 4.30pm

Saturday: 10.00am - 1.00pm

(or by appointment)

At Borough Road,
Gallowfields Trading Estate
DL10 4SX

Tel. 01748 - 822682 (Home)

Tel. 01748 - 821909 (Showroom)

"We cover the Dales"

**McGarry
& Co** SOLICITORS



*Local Knowledge &
Practical Advice*

Your Legal Companion

- PROBATE & ADMINISTRATION
- WILLS
- AGRICULTURAL MATTERS
- POWERS OF ATTORNEY
- NURSING & RESIDENTIAL HOMES
- LAND TRANSACTIONS

Offices At:

Barnard Castle

Hawes

mbmcgarry.co.uk
e.office@mbmcgarry.co.uk

t. 01833 600 160
DL12 8EQ

t. 01969 666 290
DL3 3QS

T

TOM ADDISON

FINE FURNITURE

Fine quality furniture handcrafted in the heart of Wensleydale.

Free standing and fitted furniture designed & handmade to your requirements.

All enquiries welcome: 07585952951

tom@tafinefurniture.co.uk

www.tafinefurniture.co.uk



Holiday Cottage

Overlooking Reeth Green

Sleeps 6/7

£750 per week

www.rokebyhousereeth.com

Winter short breaks/reductions for 2 people



Authority confirms support for Upper Wensleydale proposal

Bainbridge, 28 June 2022

Parents' appeals for a safe and off-road recreational route through Upper Wensleydale have been heard, the Chair of the Yorkshire Dales National Park Authority has said today.

The National Park Authority at its annual general meeting confirmed its support for the development of a multi-user route along the disused railway line between Garsdale Station and

Hawes, having debated the results of a survey carried out during the spring.

A total of 2,261 individual responses were received to the survey, with people identifying as parents, grandparents, as well as those with limited mobility, expressing strong support for the proposal.

The Authority will now carry out further research and begin to approach landowners and potential partners. Creating a multi-user route is expected to be a significant capital project which would likely take several years to complete.

Chair of the National Park Authority, Neil Heseltine, said: "Members of the Authority made the point that it was no longer responsible to keep waiting in vain for railway reinstatement and that



The former railway line can be made out on this aerial view, taken from near Appersett viaduct, looking west to Upper Wensleydale - YDNPA

REETH AND DISTRICT GAZETTE LTD

the route should be used by today's generation of walkers, horse riders and cyclists.

"Four out of five of the more than two thousand people who responded to the survey said they supported the proposal. I would like their views to be heard.

"Three responses sum it up for me. One said: 'We need safe routes for people of all ages and abilities to enjoy the outdoors and to promote healthy lifestyles. I feel this is especially important as a father, as I'd like my children to enjoy these benefits.' Another said: 'Horse riders are normally women and children. It is too dangerous to ride on roads and too many of us and our horses are being killed each year.' And another person said: 'My mobility has become limited so a trail that is level to allow a mobility scooter would be wonderful.'"

Chief Executive Officer David Butterworth told today's meeting that the response to the survey had been "extraordinary".

He said: "The survey simply sought the public's views on a multi user

route. Most people who responded understood that. Some respondents however, clearly thought the National Park Authority had a choice between installing or reinstating the former railway line or working towards the development of a multi-use route. The former is simply not an option the Authority have. We can either look to work with partners and others to develop a multi-use route or we can do nothing other than try to protect the route in the hope that at some future date the political will and the finance might be available to reinstate the railway.

"Members discussed that point at considerable length during the March meeting and there was a prevailing view, and I would agree with it, that the Authority should now be looking at delivering one of its other objectives, rather than simply protecting the trackbed. Decades have now passed since trains ran over this line - over 60 years - which means that the benefits that might accrue to the area from finding another use are now worth exploring."



YORKSHIRE DALES
National Park Authority

Wensleydale Tree & Horticulture Services (Est. 1995)



David Allen (HND Arboriculture)
Fully Insured (£5 million)
Professional tree work: felling,
crownthinning etc. to BS3998

Tel 01969 667364 Mobile: 07811 576108
E-Mail: treesinhawes@gmail.com
www.treesinwensleydale.com

Martyn Leaver *Dry Stone Waller*

- Farm or domestic work
- Drystone or facewalling
- Fence repairs and paving
- Misc jobs etc

Thwaite 01748 886025
Mob: 07971 456 043

Talking Pictures

Jurassic World—Domination Review by John Hunter

Well, after my glowing review of 'Maverick', here's yet another superb piece of celluloid magic hinting this may be a vintage year for the movies (*Move aside Covid, we're back!..?*). OK, celluloid is *so* yesterday, and digital projection now makes those dinosaurs

look even more realistic than back in '93 when the first of the six 'Jurassic' movies debuted. If I recall, this was one of *our* first visits to a 'Multiplex' - *BIG* screens, *clear*

projection, Dolby surround sound...*the future of the movies indeed*. How nice therefore that director and writer Colin Trevorrow has seen fit to conclude the saga by inviting back most key characters and combining a thrilling joy ride of a plot with some knowing and pertinent 'eco' comments throughout. He is on record as saying that 'dinosaurs chasing and killing people in city streets' was '*NOT this movie*' - and three cheers for that.

The first 45 minutes or so actually features very little 'dino' footage save for raptor 'Blue' and her offspring, soon to be kidnapped along with our hero couple's 'adopted' cloned daughter

(...if you're new to all this, it *will* make sense eventually ...promise). Instead we cover more locations than previously seen in all of the films put together, which makes for quite a complex plot set-up, which, with all the characters in place (including the return of Sam Neill and Laura Dern's palaeontologists from movie#1 (and#3) and Jeff Goldblum's always amusing chaos theorist from movies #1 and #2) launches us into a chase sequence set in the narrow streets of Valetta which is worth the



price of admission alone. Here, our heroes crash an illegal 'dino' trafficking den, setting loose a couple of raptors which chase Chris Pratt on motorbike - (*him not the dinos*) causing general

mayhem across the city, whilst more raptors chase his partner in a truck - both of them heading for a dilapidated cargo plane en route to the 'villains lair'. Once again the chief villains are those fiendish boffins, led here by slimy Campbell Scott playing 'Dr Lewis Dodgson' (clever name - think Alice in Wonderland) who actually briefly appeared in movie#1. Now in charge of Biosyn Genetics (a rival company of InGen, who masterminded the original Jurassic Park) - ostensibly investigating the production of a perfect crop to help mankind, but really creating monster locusts who are already gobbling up crops around the

REETH AND DISTRICT GAZETTE LTD

world (*except* of course Biosyn-produced crops!)

Acting is top-notch throughout - there is humour amongst the chases and thrills (many of which are *very* intense - this deserves its 12A certificate) and as mentioned, the dinosaurs (who *do* appear in their droves as the film progresses) look as realistic as ever. Actually much less CGI was used this time round and many of the creatures were 'animatronic' (i.e. 'real') and could interact with the actors on set (well... controlled by an 'operator' of course!). Special mention for composer Michael Giacchino who weaves the original 'Jurassic' melodies into a retro full orchestral score which supports but doesn't overshadow the almost non-stop action in the latter stages of the film. Full marks all round from me.



**Ballet for boys and girls
from the age of 3 years.**

**Modern Dance/Jazz
for children and teenagers.**

Tap for children and adults.

**For more information please
contact:**

Janet Seymour LRAD

Tel: 01748 884 677

Mobile: 07958 145752

www.swaledaledance.co.uk

The Buck
— AT REETH —

BT SPORT

Food between 12pm – 8pm everyday

We don't reserve tables – first come, first served

BT Sport on 3 TV's

Live Music (at least once a month)

Great views from the Beer Patio out the front

Huge Beer Garden out the back

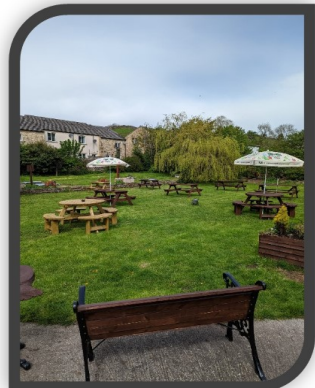
Pool Table, Dart Board, Juke Box

Relaxed and Friendly Pub

Pet Friendly

Letting bedrooms

Website www.thebuckreeth.co.uk



REETH AND DISTRICT GAZETTE LTD

Library's 10th birthday party – 19 August

Don't forget that we're celebrating the library's 10th birthday on Friday 19 August between 11am and 1pm-ish. Everyone is welcome to join us in the Orchard at Hudson House (or inside if the weather's bad). Whether you're a library user or not, a volunteer past or present, we'd love to see you. There'll be nice things to nibble and a variety of liquid refreshments. And you can always pop into the library and borrow a book or two while you're there.

Elizabeth Bedford 886974
Maggie Kentsbeer 884186



Rose Cottage

Just off the village green in Reeth
Sleeps 4

Dogs welcome

Tel 01964 562239

Email: rosecottagereeth@gmail.com

Richmond and Dales Private Tutor MATHS AND ENGLISH

Pre-school to Secondary Yr. 7

Caroline Henderson

Healough, DL11 6UE

Tel. 07814292031

richmondprivatetutor@gmail.com

www.richmondprivatetutor.co.uk

Bellegreen Holiday Cottage

Overlooking Reeth Green
Sleeps 7 in 4 bedrooms

www.bellegreen.com

Keith@bellegreen.com

0115 922257



4

CLEANING SOLUTIONS

BOOK NOW!

PRICES QUOTED ON REQUEST



DOMESTIC CLEANING



HOLIDAY HOME CLEANING



COMMERCIAL CLEANING



DEEP CLEANING



OVEN CLEANING



CARPET/UPHOLSTERY CLEANING



OUTDOOR CLEANING



Eye4CleaningSolutions



eye4cleaningsolutions@gmail.com

Cherry Holme, Reeth, North Yorkshire DL11 6SY

TEL: 07903 368132

YORKSHIRE FOOT CLINICS

Podiatry/Chiropody
Alex Kravchenko MChS, BSc Pod
(Hons)
Nail cutting, callus, corns &
ingrowing nails
All treated in the comfort of your
home
Tel. Richmond 850020

PROPERTY MAINTENANCE

General Building Work, Dry Lining,
Decorating, Electrical Work, Kitchen
Fitting, Joinery, Paving, Garden
Maintenance, Roofing, pointing &
guttering work. Small jobs welcome.
Free estimates.

Contact Martin or Django
Tel 01748 886 465 Mob: 07813 715 120
Email: martinkiss1960@gmail.com

A.J. CLACHER LTD

Established 1961

PLUMBING & HEATING ENGINEERS

- Gas, oil and solid fuel central heating installations
 - All aspects of plumbing and gas installations
 - Boiler servicing and repair • Landlord Gas Safety inspections
 - Bathroom installations and Plumbing • Heat Pumps and Solar Heating
- Unit 38 Forge Way, Cleveland Industrial Estate, Darlington DL1 2PB

Tel. 01325 468372 • E-Mail info@ajclacher.co.uk
www.ajclacher.co.uk



Chapel Home & Garden Services

A friendly, reliable and efficient service for all your garden maintenance. Services include pressure washing, tree pruning, hedge trimming, rotivating and all year round garden care. Fully insured, with very competitive rates. All tasks for garden considered.

Contact: Richard Eagle:
The Old Chapel.
Marrick.
07807 811795

**For Fun &
Adventure**

Scouts 
Swaledale

**Make new friends
Learn new skills**

Have room for more girls & boys so come along and have lots of fun & adventure

Beaver Scouts aged 6-8 years Meet Tuesdays 4.45 – 6pm

Cub Scouts aged 8-10.5 years Meet Tuesdays 4.45 – 6pm

Scouts Aged 10.5 -14 years Meet Mondays 6.30- 8pm

Adult Leaders/helper 18 years upwards

Find out more contact Richard on 884353

Website: www.richmondshirescouts.org national website. www.scouts.org.uk



deliciouslyyorkshire
TASTE AWARDS
2017
WINNER

CAMBRIDGE HOUSE

YORKSHIRE'S FINEST
taste
WINNER
2016
YORKSHIRE POST
deliciouslyyorkshire

2018
CERTIFICATE OF EXCELLENCE
tripadvisor

VisitEngland
Gold
AWARD

VisitEngland

GUEST
ACCOMMODATION

Cambridge House Reeth boasts one of the most enviable positions in the Yorkshire Dales, perfect for walkers, cyclists or exploring North Yorkshire. Five en-suite rooms. Listed in The Good Hotel Guide 2019. Winner, White Rose Awards Guest Accommodation of the Year 2018

Y
WINNER
WHITE ROSE AWARDS
2018

01748 88 46 33
www.cambridgehousereeth.co.uk
info@cambridgehousereeth.co.uk



Grant funds equipment for local furniture business

A brand new furniture business based in the heart of the Yorkshire Dales has been given a cash boost by the district council.

Tom Addison is now the proud owner of a versatile band saw which is helping him to expand the range of products he can supply through his Fine Furniture business. He received



£1,000 from Richmondshire District Council's Small Business Grant scheme for the equipment.

Tom set up Tom Addison Fine Furniture in August 2021 when he decided he wanted to be his own creative boss designing and making beautiful bespoke hand crafted



furniture for commissions and for sale. Before turning self employed full time, he spent a couple of years working in the evening and at weekends to set up his Askrigg workshop and work on some portfolio pieces.

"With this help from the district council I was able to purchase a band saw machine which has really helped my business take a big step forward," he said. "Being a small workshop I usually do most of the making processes by hand but having this versatile bandsaw gives me different opportunities. I can now create curved pieces a lot more easily as well as cutting much larger pieces of timber."

The Small Business Grant Scheme offers up to £1,000 to small businesses under 36 months old to help start and grow. The fund can be used towards the purchase of equipment, marketing costs and adaptation to premises.

Further details on how to apply can be found on RDC's [funding for businesses](#) page.

The Friends of Marrick Priory are hosting

An Italian Evening



Delicious food
with music from
Marske Choir

The Memorial Hall Reeth
Saturday 6th August 7pm

Tickets £12

available from Reeth Post
Office

Bring your own wine or
drink of choice.

Ukrainian Family arrives in Reeth



Reeth is set to welcome a second Ukrainian family shortly. Maryna, Mykola, and their children Bohdan (age 11) and Orest (6) come from Zhytomyr, west of Kiev.

They made the difficult decision to leave their home after the city was targeted by Russian bombs and a local school was hit. Since then they have been living as refugees in Poland. Mykola is an HGV driver and has been delivering supplies to the border.

Maryna's parents have a farm, and the family spent most of their weekends there before

the war. The children love mucking in with farm life, so when they decided to try and leave Poland they were keen to move to a rural part of the UK.

The family's new home is to be Hilltop, just next to the school in Reeth. The house belonged to Judith Calow, who died last September. She and her husband Peter shared the last 30 years of their lives in Reeth and loved being part of such a wonderful village.

Judith was a member of the local Quaker community. She had strong associations with Amnesty and other charities, and she would be pleased to know that her house could be a haven for a family in need. She would also be delighted to know that Maryna is a jam-maker!

No doubt it will be a challenging time for the whole family; learning a new language, finding new friends, and adjusting to the ongoing tragedy of Putin's invasion of their homeland. Hopefully they can find some joy in this wonderful part of the world.

Alan Calow

Below: Judith and Peter at Hilltop



The Black Bull

Reeth's Oldest Inn, serving a range of Real Ales

Comfortable en-suite accommodation,
Traditional Pub Fayre served daily
Sunday Carvery (booking advised),
Coaches welcome

Tel: 01748 884 213,
Email: bookings@theblackbullreeth.co.uk,
Black Bull, Reeth, DL11 6SZ,
www.theblackbullreeth.co.uk



THE OLD TEMPERANCE BOOKSHOP

Reeth, Richmond, DL11 6TE

Tel. 01748 884185

Christian books & cards, Fairtrade
crafts and food

Beside the village green
in Reeth, we are 50
yards up from Reeth
Evangelical

Congregational Church

Opening times:

1.30pm - 4.00pm Mon, Thurs, Sat

10.30am - 4.00pm Fri

Closed Bank Holiday Monday

See us at Reeth Show



Hudson House

Your valuable community asset
Rooms for hire

Suitable for meetings, lectures, talks,
training or social events.

The Meeting Room - maximum of 30
people.

The Meeting Place (evenings only) -
maximum of 10 people.

Access to PCs, Internet, printer, photo-
copier, laminator and kitchen facilities.

The Orchard Gallery for hire

Suitable for exhibitions of paintings,
photographs and other artwork.

Own entrance through the garden.

Sales can be handled for you.

For prices (special rates for community use),
bookings or more information please
contact Jill May on 01748 884 485

or

admin@hudsonhouse.info



**Hudson House
Centre
Reeth**

**Owned by the Community of
the Two Dales**

Community

- Gallery
- Learning
- Library
- Orchard
- Transport

National Park Centre

North Yorkshire CC

Police

Richmondshire DC

Swaledale Festival

Business Forum

Hot drinks vending machine

Internet & WiFi

Local notices & information

Meeting Rooms

Tourist Information & Shop

Open all year

7 days a week

See website for times

Silver Street Craft Unit's
managed by Hudson House.

For all enquiries contact

Jill May.

01748 884485

www.hudsonhouse.info

**MICHAEL GUY
ELECTRICAL**

FULLY QUALIFIED ELECTRICIAN

Over 20 years experience working in
the dales in all areas of
electrical work.

Some of my services include:

Complete rewires | Electrical installation
condition reports | Electrical vehicle
charging points | Additional & alterations
to socket & lighting points |

Replacement of storage heaters to modern
eco panel heaters.

Contact Michael :

T: 01748 886097 | M: 07980130017

Mail: info@michaeltguyelectrical.co.uk

Website: Michaelguyelectrical.co.uk

APPROVED ROINTE HEATER INSTALLER

NICEIC APPROVED CONTRACTOR



**R.A. Lofthouse
Roofing Services
Kirkby Stephen**

We **SPECIALISE** in traditional and
modern slating and tiling

- Traditional slate specialist
- Re Roof / Repair work
- Slating, flagging & tiling
 - Lead work
- Velux replacement / installation
- Chimney repair/replacement

For a **FREE** quotation or any
enquires please call:

Tel: 017683 48787

Mob: 07557738016

or email us on:

r.a.lofthouse@outlook.com

Diary Dates

August

Sat 6th Aug Italian Evening 7pm,
Reeth Memorial Hall, tickets from PO

Fri 12th Aug - Laura Cortese & the
Dance Cards

Reeth Memorial Hall 8pm

Fri 19th Aug - Library 10th Birthday
Party 11.00—13.00 Hudson House
Orchard

Sat 20th Aug - Coffee Morning
10am-noon, Reeth Evangelical Congre-
gational Church

Mon 29th Aug—Reeth Show
9.30am - 5pm, Reeth showground

September

Sun 4th Sept—Swale Singers start
rehearsals for pre-Christmas concert -
3 to 5pm every Sunday, Reeth Memori-
al Hall. All welcome

Wed 7th Sept - Muker Show
10 - 5pm, Showground, Muker

Thurs 22 Sept - TLC @Gunnerside
Rhoda Fraser with more tales from the
Dales 7.30pm Gunnerside Village Hall

October

Sat 8th Oct - John Tams 8pm Reeth
Memorial Hall

Fri 14th Oct - 8pm Andy Irvine Reeth
Memorial Hall

Thurs 27th Oct - TLC @Gunnerside
our annual quiz night with quizmaster
Bob 7.30 - Gunnerside Village Hall

November

Thurs 24th Nov - TLC @Gunnerside
Kathryn Guy shows us how to make a
felted Christmas bauble 7.30pm
Gunnerside Village Hall

The clipart in this Gazette were downloaded
for free non-commercial use. From sources:
<https://www.pngitem.com/> & <https://www.clipart-library.com>
<https://www.pxfuel.com/en/free-photo-jhznb>

Market Place

Superking bed (can be twin),
2 years old, cost £880 new, £200 ono.
01748 886366.

Free Place

Please use this space to offer for free
larger (eg furniture) items you no
longer require

Wanted

The Lunch Clubs need a new caterer
who could provide a cooked meal for
about 30 people, two or maybe three
times a month. If you could be that
person then please call Julia on
886 524.

Swaledale Woollens require hand
knitters. To knit in your own home in
your own time. Please contact us at the
shop on 01748886251 or email us
at mail@swaledalewoollens.co.uk

The Old School Muker
Art Gallery & Craft Centre



The best regional and British art & crafts housed in the unique setting of Muker's 18th Century school:

- » Two floors of art & crafts
- » Relaxed, self-service cafe with coffee, cake & wi-fi
- » Outdoor seating in our private walled garden with views of Kisdon & Buttertubs
- » Situated in Swaledale in the Yorkshire Dales National Park

Guning Lane, Muker, Swaledale, DL11 6QG
www.theoldschoolmuker.co.uk
Tel: 01748 886155
email: ask@theoldschoolmuker.co.uk



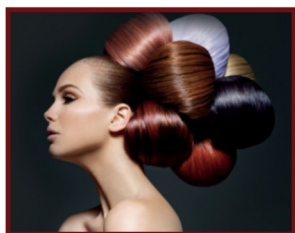
*Beauty and tranquillity.
Quality and care.*

Cat Hole Cottages | Cat Hole House | Thwaite
Richmond | North Yorkshire | DL11 6DR
Tel: 01748 886366

Discover our treasury of gorgeous cottages in Swaledale and Arkengarthdale. Well-equipped, stylish and individual, our cottages offer guests a wonderful holiday in the midst of superb scenery!

To find your perfect cottage call Judith on 01748 886366

www.catholecottages.com



Sarah Louise Olney

Mobile Hairdressing

Facials

Massage

Reflexology

Indian Head Massage

Cruelty free products

Cruelty free hair colour

Reeth 07875 926946



two dales bakery
reeth

ARTISAN BAKERY & CAFÉ

Delicious breads and pastries
Food served all day including vegetarian/vegan options
Well behaved dogs welcome

Visit us at the Reeth Dales Centre,
Silver Street, Reeth,
North Yorkshire, DL11 6SP

Please see our website for current opening times
www.twodalesbakery.co.uk
☎ 01748 905001 📱 📷