

REETH & DISTRICT GAZETTE

ISSUE NO. 325

JULY 2023



*Your local news magazine
for the two dales*

PRICELESS

REETH AND DISTRICT GAZETTE LTD

Join the Team at Hudson House

Can you offer a few hours per week?

We are already a team of 18 volunteers (some pictured below) who run the information centre part of the year and are looking to expand.



All the resources you need are provided.

You don't have to be an expert, just enjoy meeting people!

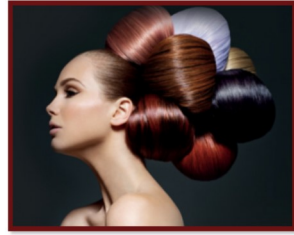
Whether you are new to the area or have lived here for some time, we would love to have you as part of our team.

Short walks and socials are planned during summer before we start back on duty in November. You are welcome to come along if you would like to meet some of the team and find out more.

Please get in touch with me. I would love to hear from you.

Karen Campbell 07977 133764, Email: karencampbell2018@gmail.com

Cover photograph by Richard Walls at the Old School Gallery, Muker



Sarah Louise Olney

Mobile Hairdressing

Facials

Massage

Reflexology

Indian Head Massage

Cruelty free products

Cruelty free hair colour

Reeth 07875 926946

**REETH & DISTRICT
COMMUNITY LUNCHEON
CLUB
13TH JULY 2023
12.30 FOR 1.00PM**

PLEASE COME ALONG TO ENJOY A 2 OR 3 COURSE LUNCH IN THE "KING'S ARMS" MARKET PLACE, REETH ON THE THURSDAY 13TH JULY 2023.

THE PRICES ARE FOR 2/3 COURSES OF HOME COOKING AT £10.00 OR £15.00 INCLUDING TEA & COFFEE.

WE WILL HAVE THE USE OF THE FUNCTION ROOM FROM 12.00 - 15.00 HRS.

ALL ARE WELCOME TO ENJOY GOOD FOOD AND HAVE A GOOD TIME MEETING NEW AND OLD FRIENDS.

PLEASE REMEMBER TO BOOK YOUR TABLE ON
01748 884259.

REETH AND DISTRICT GAZETTE LTD

Gazette Management Team

Chairman: Susan Miller

Longstone, Low Row, Richmond
DL11 6NA

Tel: 01748 886 358

E-mail: chairman@reethGazette.co.uk

Secretary: Sue Alderson

Holme View, Low Row, Richmond,
DL11 6PE

Tel: 01748 886 292

E-mail: secretary@reethGazette.co.uk

Editor: Jackie Pope

Guildy Hall, Muker, Richmond,
DL11 6QG

Tel: 07885 498676

E-mail: editor@reethGazette.co.uk

Treasurer: Andrew Bedford

Glory Be, Blades, Richmond, DL11 6PS

Tel: 01748 886 974

E-mail: treasurer@reethGazette.co.uk

Subscriptions: Elsie Whitehead

5 Place Hill, Reeth, Richmond,
DL11 6SD

Tel: 01748 884 132

E-mail: subscription@reethGazette.co.uk

Distribution: Trevor Brown

The Cottage, Healaugh, Richmond,
DL11 6UA

Tel: 01748 884 111

Published by

The Reeth & District Gazette Ltd.

Company Number: 06541854

c/o The Company Secretary

Andrew Bedford, Glory Be, Blades

Richmond, North Yorkshire DL11 6PS

Tel: 01748 886 974

E-mail: treasurer@reethGazette.co.uk

No material may be reproduced in whole or in part without permission. Whilst every care is taken for accuracy, the publishers cannot be held legally responsible for any errors or opinions in articles, listings or advertisements.

ADVERTISING

For information on advertising and prices, please contact the treasurer. Advertising copy, should be sent to the editor.

The editor reserves the right not to publish any advert or article considered to be inaccurate or misleading.

All articles or items for inclusion should be sent to the editor
E-mail: editor@reethGazette.co.uk
or left at Reeth Post Office.

The Editor welcomes feedback

At the editor's discretion, your feedback will be published with Editor responses as appropriate.

Please send feedback to
editor@reethGazette.co.uk

Gazette Deadlines

The deadlines for the next two months are:

August issue: July 11th
September issue: **August 8th**

Posting The Gazette

To post a copy of this Gazette to a friend or relative, will require a Large Letter size and will cost £1.85 second class, or £2.25 first class.

PLEASE NOTE: We will endeavour to publish all suitable items submitted by the deadline date but this cannot be guaranteed and is at the sole discretion of the editor.

Reeth's Magical Meadow

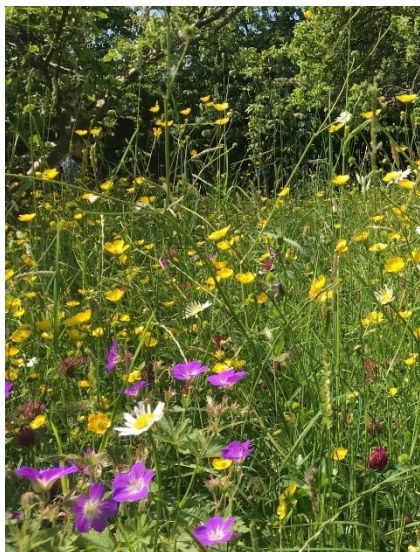
Janice Wilkinson takes care of the marvellous and much loved wildflower meadow in the Hudson House garden.

Q: How long have you been involved with the meadow garden, Janice?

A: I started helping around nine years ago, but it had already been going for about thirteen years. It was quite a ground-breaking thing to do twenty-three years ago and keep it going all this time.

Q: So where did all these stunning flowers come from?

A: Initially, from Muker meadows. The garden group was given seed by the Muker farmers and that's how it got established. Over the years we've had permission to collect yellow rattle seed from local meadow owners to add to our meadow.



Q: How much of your time does it take up, and what's the busiest time of year?

A: Well, I'm here most Saturday mornings, but I do want to say that it's a team effort - everyone in the gardening group puts their time into it - it takes a lot of work!

The busiest time of year is once the flowers go to seed - usually mid July - so weather permitting, we cut the whole meadow with scythes. Josie (Kyme), Frank (Wilkinson) and I attended a course last year run by the Tees-Swale: naturally connected programme to learn how to use the scythes. Previously we cut the meadow with a power scythe which was becoming tricky to use around the spreading fruit trees! We spread the cuttings out to dry and shake them to allow the seeds to drop - ideally all done over a few dry days.

Then we bag up the dry hay into old builder's bags - it was taken by local goat owners last year. After that we keep the grass short - always removing the cuttings - scarify the ground and distribute local yellow rattle seed before the winter frosts come.

Q: What's been the biggest change since you got involved?

A: About six years ago we realised that vetch was starting to dominate, strangling the other plants. We got help from the meadow experts at the Yorkshire Dales Millennium Trust who suggested a six-year plan to subdue the vetch. They were really helpful and we're now back on track, and over the years we've added cranesbill and

REETH AND DISTRICT GAZETTE LTD

oxeye daisy plugs along with wild daffodils and fritillary bulbs.

Q: Do you have any advice for gardeners wanting to create their own wildflower area?

A: Yes. Get started! But it does require a different mindset. It's normal to think that fertiliser will help a garden grow but it's the opposite for wildflowers. We're careful to take the cuttings away to reduce nutrients because that's best for them. And we've learnt not to use sprays of any kind - the right mix of plants and insects really do look after each other.



Q: And lastly, what gives you the most pleasure?

A: Just look at it! Especially now, this time of year. What more motivation do you need?

Janice was talking to Sustainable Swaledale on 5th June, at the Hudson House Garden in Reeth.

SWALEDALE MUSEUM & SHOP

OPEN Wednesday to Saturday 10.00 am to 5.00 pm



Geoff Braithwaite

Property Maintenance &
Painting and Decorating

Tel: 01748 886 783

Mob: 0789 106 3546

Email:

geoff@mukerchapel.o.uk

VICTORIA COTTAGE

Lovely Period Cottage
Overlooking Reeth Green
Great Views. Sleeps 4

Email:

judy.roger@btinternet.com

Website:

www.victoriacottagereeth.com

REETH AND DISTRICT GAZETTE LTD

Gunnerside TLC

Two unmissable events

We are offering not one, but two events in July - both foodie-themed. You'll have to get your skates on for the first one, as it's on **Saturday 1 July from 1.30 to 3.30** at Gunnerside Village Hall.

Afternoon tea (and coffee) will be served together with yummy scones and jam and cream and a selection of home-baked goodies.

And you can get that feel-good factor by buying a few raffle tickets to support local charities.

On **Thursday 27 July at 7.30** in Gunnerside Village Hall our very own expert on all things Swaledalian, Jane Sammells, will tell us about dairying in Swaledale and Wensleydale and how practices have changed over time from farmhouse production to the current modern dairy industry.

Not a member? You're very welcome to come to the talk as a guest for an incredibly modest £2. Or for just £5, you can become a member.

Sue Barron 884937



**Bespoke
Tutors**

**Maths, Science,
English Private
Tutors**

Gaynor Voice & Kate

**Brown Hill Top
Low Row
Richmond
DL11 6NB**

**Tel. 01748 886201
Email: bespoketutors@gmail.com**

www.bespoketutors.org.uk

Going above and beyond for our clients...

For more information please visit our website at: hallandbirtles.co.uk

CONVEYANCING **FAMILY MATTERS** **WILLS** **THE ELDERLY CLIENT**

Hall & Birtles
-SOLICITORS-

Our services include:

- Landlord & Tenant • Buying & Selling Property • Wills, Trusts & Probate
- Divorce & Matrimonial Matters • Commercial & Private Disputes
- Agricultural Matters • Powers of Attorney

30 min FREE initial consultation

Directors: Alastair C. Birtles BA Hons | Stuart J. Hall LL.B | Deborah C. Parish LL.B

Leyburn Office
The Office, Golden Lion Yard, Leyburn,
North Yorkshire, DL8 9AS
Tel: 01969 625526
Email: leyburn@hallandbirtles.co.uk

Hawes Office
Bank Chambers, Main Street, Hawes,
North Yorkshire, DL8 3JL
Tel: 01969 667171
Email: hawes@hallandbirtles.co.uk

SWALECTRIX
YOUR LOCAL DALE'S ELECTRICIAN

- All Electrical Work Undertaken
- Fault Finding & Maintenance
- TV, DATA, CCTV & Networking

07400 411 411
01748 327 372

pete@swalectrix.com

DOMESTIC INSTALLER

Chisel Cottage,
Reeth, DL11 6TQ

www.swalectrix.com

FILM AND FISH AND CHIP NIGHT



WE'D LOVE TO WELCOME EVERYONE TO OUR
SECOND FILM NIGHT!



WHEN - FRIDAY JULY 7TH

WHERE - LOW ROW INSTITUTE

TIME - DOORS OPEN 6PM, START 6.30PM

FILM - AVATAR THE WAY OF WATER

ENTRY - £5 PER PERSON (EXCLUDING FISH
AND CHIPS)

DRINKS AND POPCORN AVAILABLE

WE NEED TO KNOW FOR ORDERING FISH
AND CHIPS BY 30TH JUNE PLEASE

TEL/TEXT - NEIL ON 07713 115949

WE'D LOVE TO SEE YOU THERE!

T.A.R. Longstaff

**Mobile Hydraulic hose
repairs in Reeth and
surrounding areas,
anywhere anytime.**

**Also mobile on site
welding.**

**Tel Percy on
07889725349.**



SALES - LETTINGS - MANAGEMENT
FREE 'NO OBLIGATION' MARKET APPRAISAL AVAILABLE
UPON REQUEST

6 Bridge Street
Bedale
DL8 2AD
01677 422282

bedale@
normanfbrown.co.uk

14 Queens Road
Richmond
DL10 4AG
01748
822473/822967

richmond@
normanfbrown.co.uk

25 Market Place
Leyburn
DL8 5AS
01969 622194

leyburn@
normanfbrown.co.uk

www.normanfbrown.co.uk



Sustainable
Swaledale

Sustainable Swaledale

Black flash reveals swift site

Blog article on the Yorkshire Dales National Park website covering Sustainable Swaledale's **WingIt project** supporting swifts and swallows. The interview with Rachel and Stacey can be found at: <https://www.yorkshiredales.org.uk/black-flash-reveals-swift-nest-site/> and you can also read it on page 36.

A press release is available at: <https://tinyurl.com/393j8hud>

An article on Jonty Willis and his efforts to increase the swift population in Redmire by making and putting up 15 swift boxes can be found on the Richmondshire Today site: <https://tinyurl.com/48nkn9au>

Defra: Improving and extending our offer for upland farmers

The government has announced that they will make **payment rates for the Countryside Stewardship equal** for both upland and lowland farms when they carry out the same actions. The number of actions for which one can receive payment will also increase from 90 to 130 in 2024. DEFRA has also pledged to improve the advice and support available to upland farmers. Check out the DEFRA blog available through this link: <https://tinyurl.com/ywk6hbed>

Mow Free May

Along with increasing numbers of

people, we left most of our **lawn unmown in May**. After participating for a couple of years, we have seen an increase in the number of species in our lawn and because the flowers are still to seed, we now adopt a mohican cut approach leaving patches of lawn with the largest number of flowers remaining uncut until the flowers have seeded.

National Park Protectors Awards 2023

Sustainable Swaledale has been honoured to be **shortlisted for the Campaign for National Parks - Changemaker of the Year award**. The National Park Protector Awards which have been run annually for decades by the Campaign for National Parks, recognise and reward the efforts of individuals and groups who either champion change or protect the national park landscape. The final decision, in part influenced by a public poll, is announced 12 July.

Sustainable: What's In a Word?

Reminder that blogger and environmental historian **Sandy Irvine** is speaking at a free event organised by Sustainable Swaledale at the Low Row Institute on 1st July 7.30pm. Cash bar and raffle.

Tree Nursery event at Open Farm Sunday 11 June

Local tree seeds and nuts collected with the permission of local landowners and kept in seed boxes over winter were potted out into trainer containers at the Open Farm event at Hazel Brow Farm, Low Row. The tree nursery session run by Carol Douglas of the Yorkshire Dales Millennium Trust, saw

REETH AND DISTRICT GAZETTE LTD

volunteers ranging between 2.5 and 70+ years repot hazel, oak, blackthorn, hawthorn and wych elm seedlings. These seedlings will then be kept by volunteers until next spring when the seedlings will be brought together and quarantined in community tree nurseries for a year to monitor for disease. After this time, it is hoped that native Swaledale tree whips can be planted locally in the Together for Trees 2024/2025 planting season.



Carol being helped by Polly
Margaret



LIBERTY
FABRIC

Quality fabrics for quilting, dressmaking, etc., sewing kits & accessories, plus wool/yarn.
Abbotstone House Collection,
Little Shop on the Hill, Hawes.
☎ 07921 058803/01969 667988



All aspects of tree work carried out by fully insured and NPTC qualified tree surgeons.

Tree removal, pruning, planting, hedging and stump grinding.

Contact Tom Hollingworth
07929322227
www.arborestrees.co.uk

NYCC HOME LIBRARY DELIVERY SERVICE

We deliver books, audiobooks, DVDs and information to the homes of people who find it difficult to get to their local library.

If you are interested in receiving monthly deliveries please contact

**North Yorkshire Libraries
Headquarters on
01609 533800**

**Or Catterick Garrison Library
on
01609 534595**

REETH AND DISTRICT GAZETTE LTD



July Update

As another academic year draws to a close, it is a time for celebration as we reflect on the achievements of our volunteers, young people and participants of all ages and say thank you for the many contributions and memories created. Throughout the year we have been treated to visits from young people back home from university, eager to share their experiences, knowledge gained and catch up with friends. We've shared laughter and tears - the emotional rollercoaster of growing up and growing older: relationship challenges of all varieties, what subjects to study, whether to take a gap year, what instruments to invest in, and what the next steps or chapter on life's journey might be. Before the summer break there will be two celebration concerts - Friday 21st July at Thoraby Village Hall, DL8 3SU and Saturday 22nd July at Leyburn Arts and Community Centre, DL8 5DL. Tickets cost £10 or U18s £5 available from Leyburn Arts and Community Centre reception or www.blueboxt.org.

Our Trustees have been supported by some amazing community advisors, everyone giving their time and working hard to manage the transition to becoming a fully fledged charity. As we celebrate our one-year anniversary, our website and emails have been converted from '.co.uk' to '.org'. GiftAid registration is in place and our regular

donors should now have received information with the new bank account details. Our individual giving and sponsorship scheme has had a refresh and takes the new name of BlueBoxt Angels. Our email contact details are: admin@blueboxt.org for general queries, info@blueboxt.org for membership, subscriptions and donor queries, and finance@blueboxt.org for all things finance. If you would like to write to us, our registered address is Office 15, First Floor, Thornborough Hall, Leyburn DL8 5AB. Telephone and messaging: Colin Bailey, Administrator - 07711 211169 and Judith Clark, Chair of Trustees - 07882 331421.

Fund-raising

Thank you to everyone who came to say hello at Richmond Town Hall in May. Despite the fair being in the Market Place, we raised over £100. There are lots of opportunities coming up where you can get involved and support our work.

Coffee Mornings - We will be hosting coffee mornings at Richmond Town Hall on Thursday 31st August and Leyburn Methodist Church Hall on Friday 15th September. There will be books, cakes, tombola, raffle and of course a friendly welcome and plenty of chat over a cuppa. Donations welcome.

Strawberry Teas will be served on the lawns of Thornborough Hall on Sunday 6th August from 2pm until 5pm (if the weather is unkind, we will be indoors in The Oak Room). Enjoy fresh Strawberries and Cream, Fruit Scones with Jam and Cream served with a pot of Yorkshire Tea, Coffee or soft drink. Free Entry - Pay what you can

REETH AND DISTRICT GAZETTE LTD

donations appreciated. As well as garden games, tombola and book stall there will be live music from the Leyburn Jazz Collective.

Quiz Night - Simon Eastwood will again be Quiz Master on Friday 29th September at The Aysgarth Falls Café and Gift Shop. Tickets £12 inc. Lasagne are on sale.

Prize Draw - Tickets for our Grand Prize Draw are available at various locations around the Dales, at our events and from our volunteers. Prizes include Colour TV, Bluetooth Speakers, Hampers and Vouchers to name a few. The full list will be published on the website. Closing date for entries is Saturday 30th September.

Wensleydale Community Arts Festival

As you read this month's report our first festival will have just taken place. The response from performers and exhibitors has been truly amazing with over 30 events scheduled. Thank you to everyone who took part, volunteered, attended and supported the Festival. We launched the initiative with zero budget and are thrilled to announce we have been awarded an Awards for All grant supported by players of the National Lottery. The funds will be used to help meet our set-up costs and establish the festival as an annual event.

Leyburn Jazz Festival

Tickets are now on sale. The printed brochure is available or can be downloaded by visiting the festival website at leyburnjazz.co.uk. The **Leyburn Jazz Collective** held its first session in May and now meets weekly until August when their first

appearance will be at the Strawberry Teas fund-raiser. Sessions are open to all members of the local community to take part and enjoy making-music in a relaxed and friendly environment. **Wensleydale Community Gospel Choir** - workshop dates will be announced next month. Contact us to find out more.

Colin Bailey

BlueBox Creative and Performing Arts in association with BlueBox Productions Ltd. proudly present

Decades

The Concert Tour

50s 60s 70s 80s 90s

Aretha Franklin Chuck Berry Dire Straits Neil Diamond Frank Sinatra Bryan Adams ABBA Tina Turner

Celebration Concert

An evening of popular music performed by BlueBox's Young performers

Supported by Colin Bailey and Michael Yare

Includes hits such as (Simply) The Best, 9-5, Johnny Be Goode, Sweet Caroline and many more...

Friday 21st July, 7.30pm
Thorlby Village Hall, DL8 3SU

Saturday 22nd July, 7.30pm
Leyburn Arts and Community Centre, DL8 5DL

Doors open from 7.00pm | Raffle and Refreshments | Donations Welcome

Tickets £10 | U18s £5 available from www.leyburnartscentre.com, 01969 624510
www.blueboxt.org, 07711 211169

Performers and program names subject to change without prior notice | www.blueboxt.co.uk

Langthwaite - Arkengarthdale

RED LION INN

Free House
Real Ales – Bar Snacks
Books & Maps
Tel. 01748 884218

Annual General Meeting

The AGM of The Friends of Swaledale Museum will take place at 7pm on Thursday 27th July 2023 in Reeth Memorial Hall.

CHAPEL GALLERY

2023 Tuesday Workshops at Chapel Gallery Hawes
(all start at 10am):

Date	What	Finish	Price
11-Jul	A celebration of Silk	4pm	£55
18-Jul	Needle Felted Mouse	1pm	£45
05-Sep	Needle Felted Landscape	4pm	£65
19-Sep	Garden Inspired Rag Rug Panel	4pm	£55
26-Sep	Photography (start 9am)	5pm	£65

Please contact Ellie at

info@chapelgalleryhawes.com for details
and other courses.

Or book via www.chapelgalleryhawes.com

Burtersett Road, Hawes, DL8 3NP

Dales Reyno-Vations



General Building & Maintenance

Property renovations / Roofing

Kitchen fitting / Joinery

Bathroom suites / Tiling

Painting & Decorating

Patios / Landscaping / Ground maintenance

Free estimates / Insurance quotes

No Job too small

D Reynoldson

11, Place Hill, Reeth, Richmond

North Yorkshire, DL11 6SD

01748884309 / 07792458801

Email: david.reeth1@outlook.com



JEREMY MOON

— DECORATOR & PAPERHANGER LTD —

Established 1981

Quick turnaround for holiday homes and lettings

Fully insured

Reliable and trustworthy tradesman

High class decorating at affordable prices

References available upon request

Call Jeremy for a free quotation

T: 01748 880 155

M: 07876 764 812

Email: JEREMYLMOON@BTINTERNET.COM



Notice

THE CHARLES ALDERSON TRUST

The above Trust was established, in memory of Charles Alderson, for the purpose of relieving, in cases of need, persons resident in the former Rural District Of Reeth (the parishes of Arkengarthdale, Ellerton Abbey, Fremington, Grinton, Marrick, Melbecks, Muker and Reeth) who are sick, convalescent, disabled, handicapped or infirm, by providing or paying for items, services or facilities which are calculated to alleviate the suffering or assist recovery of such persons, in such cases where help is not readily available to them from other sources.

**Applications for assistance should be made in writing to
The Clerk to the Trust,
Mrs C Steward,
2 Hillary Terrace, Reeth, Richmond,
North Yorks, DL11 6TG**



Visitor Centre Open Daily

Calvert's Now Open

Light bites, delicious mains, coffee & cake
Try our NEW Cheese Bar menu for perfectly paired tapas style dining - great for sharing with friends

1897 Coffee Shop

& dog friendly garden

Enjoy homemade soup & sandwiches, cake, coffee and ice cream, with views over the Yorkshire Dales

Cheese Experience & Pairing Room

Book online for daily demos & guided pairings

Cheese and Gift Shop

Beautiful gifts, delicious treats & cheese sampling

wensleydale.co.uk

R.L.G Property Services

- Paving • Groundworks • Decorating
- Pressure Washing • Garden Maintenance
- General Repairs & Improvements  Rated

0737 607 3816
01748 884 321

Email: Ryang2190@gmail.com

Bellegreen Holiday Cottage

Overlooking Reeth Green
Sleeps 7 in 4 bedrooms

www.bellegreen.com
Keith@bellegreen.com
0115 922257

Fremington Village Hall

Redecorated and now with it's own piano, the Village Hall (known locally as the Sunday School) is available to hire for all kinds of events, from regular classes, talks and community activities, to one-off functions like children's parties, lunches and dinners and special occasions such as wedding receptions and anniversary parties. The Hall has a small kitchen with electric cooker and microwave; toilet facilities including disabled toilet; and a small rear garden.

The Hall is a registered charity run by a small and dedicated volunteer committee. You can book the Hall by phoning or texting the bookings secretary **Alison Tupman** on **07967 839494** or by email at fremingtonvil-lagehall@outlook.com

REETH AND DISTRICT GAZETTE LTD

Muker Parish Council Minutes of Parish Council Meeting Held March 2023

Present: Cllr Metcalfe, Cllr Calvert, Cllr Reynoldson, Cllr Peacock and Cllr Whitehead presiding.

Clerk: Mr Michael Cleminson.

Apologies: Cllr Jill McMullon, Cllr Porter.

Matters Arising:

The King's Coronation - 6th May 2023. Cllr. Whitehead outlined that the celebrations would be similar to the Queen's Platinum Jubilee of last year. Proceedings will commence at 2.00pm at Muker Village Hall, there will be a bouncy castle, treasure hunt and a quiz. Refreshments will be available in the Village Hall. Cllr. Whitehead proposed that the sum of £400.00 should be given to support the project. This was unanimously agreed.

Grass-cutting - previously the Council had requested Highways to reduce the number of cuts per year. A response was received from Highways, stating that 2 cuts per year were the norm for Swaledale, which will be in place for this year. However, Highways are looking at bio-diversity and may reduce cuts in the future. It was noted that Cllr. Metcalfe proposed that the Parish Council send a positive communication of thanks to Highways. Clerk to contact Highways.

Swaledale Memorial Woodland, off Buttertubs Road. The email and proposal by Neil Clarkson was considered. The Councillors considered that trees on the site would alter the look of the landscape, it was also

doubted whether the land would sustain the growth of trees. It was considered that a few trees would be acceptable provided that they were maintained and height kept to a minimum. The Clerk to contact Mr. Clarkson.

Woodland Creation Grants - similar to item above, the Councillors thought that adding trees and woodland to Swaledale would be unnatural, and that once planted would reduce land and meadows. The Councillors did not support the proposals and know of no owners who would wish to participate, but will inform other landowners in the parish.

Emergency Plan - The Clerk reported that he was unable to locate an Emergency Plan. Cllr. Whitehead believed that one had been in existence in the early 1980's. It was agreed that the Parish should have, at least, a basic emergency plan. Cllr. Peacock reported that NYCC do have a template for an emergency plan and suggested the we obtain a copy and utilise it. The Clerk to contact NYCC.

UK shared Prosperity Fund - Cllr Whitehead outlined the fund and its objectives. Cllr. Peacock reported that the fund is very much in its infancy and she is attending a meeting on 22nd March, when hopefully she will have a better understanding of the fund and what it is intended for. It may not be appropriate for small Parish Councils. She did confirm that the fund is spread over 3 years commencing 2024 and would be targeting rural areas and settlements.

Finance:

Cllr Calvert reported that the move to electronic banking was proving difficult

REETH AND DISTRICT GAZETTE LTD

with Barclays Bank, being passed from department to department, and no-one offered any simple solution to moving this forward. Barclays were overly focussed on proof of identification etc., which was considered ridiculous given that the current signatories have been in place for some time. Cllr. Calvert will persevere to move the Parish Council to a simpler banking method. See below a Councillor resignation will need to be taken into consideration.

Orders to pay were raised for the following: Zurich Insurance Annual Renewal, Clerk's Salary & HMRC, Keld Village Hall, Contribution for King's Coronation. The Clerk reported that the precept from 1st April from NYC will be paid in 2 instalments, one in April and then one in October.

Highways:

The Clerk reported that since Ian Beighton had moved to another area, no responses had been received to all outstanding matters since December 2022. We are still awaiting an invoice for the signs at Keld. Cllr. Peacock reported that she had been in touch with Highways and Ian Beighton had agreed to update us. Cllr. Metcalfe reported erosion caused by the beck passed Ducking Dub bridge to Usha Gap bridge. Cllr. Metcalfe had taken a photo of the erosion which may in time undermine the road and cause damage. The Clerk to report to Highways.

Cllr Whitehead raised the ridiculous situation regarding the recent on/off roadworks at Healeagh with what can only be described as appalling information and directions. Cllr Whitehead produced a photograph of the sign placed at the bottom of the Buttertubs, Thwaite which was showing

the wrong direction trying to send traffic over Kisdon to Gunnerside where there is no road. As of today's meeting, the signs are still in place showing the February road closure dates. These signs have not been updated with the additional closures and no information was supplied to show the additional closures. Cllr Peacock said this was a persistent problem and took the photograph from Councillor Whitehead to show to Highways and seek updates for outstanding matters.

Richmondshire D.C:

From April 2023 RDC will become part of NYCC.

NYCC:

As stated above, all districts in North Yorkshire will merge into NYC. The Clerk has received correspondence from NYCC indicating that they may introduce "20's Plenty" across the county, to reduce all 30mph limits to 20mph. Councillors are requested to vote on support of this proposal. Unanimously the proposal is not supported by Muker Parish Council, it is not considered appropriate within the Parish, as in most 30mph zones 30mph is not achievable. Cllr Peacock reported that she was aware of this and knew of no local parish councils who supported this proposal.

NYCC now has a Coronavirus information and advice page on their website.

YDNPA:

Pre-planning consultation followed by the full Planning application **R/06/270**, regarding a proposed installation of a new mobile telephone mast at Satron. Full planning permission has since been submitted.

REETH AND DISTRICT GAZETTE LTD

Councillors were of the opinion that it was unclear from the applications how this linked with current masts and what areas the signal provided by this mast will be serviceable. In principle the Council supports the application as any improvement to communications is seen as positive for the community, safety and the local economy. Clerk to submit comments to planning.

Planning Ref **R/06/269** Permission for an extension of existing dwelling into adjoining former barn, to provide additional living accommodation at Kisdon Lodge, Kisdon Side Road, Keld. The application is supported by the Parish Council. This development ensures that the traditional buildings at this site are preserved and maintained for the future. Clerk to submit comments to planning.

The proposed Weather Station with camera at the Buttertubs, near the Millennium Cairn. The councillors welcome the introduction of a weather station, although they thought it unclear as to the precise location and size of the structure to be installed. This location is frequently used for photography etc, concerns that the structure may obstruct the lay-by and whether it would be visible in deep snow, or a position where it could easily be damaged. Clerk to submit PC comments YDNPA.

YLCA: Nothing to report

Correspondence/AOB:

Cllr Metcalfe raised concerns about 2 barns on the left as you approach Angram from Thwaite. He said paths had been installed and extensions attached to the buildings. It was agreed that contact should be made with YDNPA to ensure that all developments complied with planning

permissions. The Clerk to contact YDNPA.

The Chair, Cllr. Whitehead formally tendered his resignation from the Parish Council with immediate effect, after having served on the Parish Council for 50 years and as Chair for 35years. The Councillors regretted the leaving of Cllr. Whitehead and acknowledged his dedication, service and commitment to Muker Parish over the years and wished him well for the future. The Deputy Chair Cllr. Calvert will assume the role of Temporary Chair in the interim period. The Clerk to advertise the vacancy to seek expressions of interest for the vacant post, and to inform Richmondshire District Council.

Date and Time of Next and Annual PC Meeting : 7.30pm Wednesday 3rd May 2023 Muker Village Hall.

NORTHERN WALLS DRYSTONE WALLING & LANDSCAPING

Former National Trust
gardener with 20 years
experience
City and Guild Certificate in
Horticulture

www.northernwalls.com

Tel 0795 148 1239

REETH AND DISTRICT GAZETTE LTD



nh flooring

The Carpet & Flooring Specialist

- Amtico
- Karndean
- Panaget
- Brintons
- Westex
- & more

• Carpets • Wood Flooring • Laminates
• Vinyl Tiles • Vinyl Sheets • Rugs • Accessories

n i c f
national institute of carpet & foorlayers

Contact us now for a FREE quote, advice or more information



t: 01748 822834 m: 07789 996526
e: enquiries@nhflooring.co.uk
w: www.nhflooring.co.uk

Unit 6 Borough Court, Borough Road, Gallowfields Trading Estate, Richmond, DL10 4SX

 @nhflooring
 @nh_flooring
 @NH_Flooring



**The Friends of Marrick Annual Strawberry Tea
Sunday 16 July 3pm**

 **Not to be missed !!!! A great family afternoon** 

Delicious tea time treats

Supervised adventure activities for children

 **Entertainment with The Reeth Brass Band** 

 **Buses leave The Grinton Field from 2-30pm**

Admission free ...Donations gratefully received

Look forward to seeing you there



CALVERT & JENKINSON LTD

— Building Contractor —

All Aspects of building work carried out from renovation to new builds, plastering to roofing.

www.cjbuildersltd.co.uk

cjbuildersltd@gmail.com

Andrew: 07837955869

Ryan: 07968463840

2Dales Digital

Family Business to Support
you at home



Need help or friendly advice

Call Mike & Anne on:
01748 884737

Email us at:
mikebarden@yahoo.com
See us at website:
www.2dalesdigital.co.uk

**Local Support for your
Desktop, Laptop, Tablet
& Console Issues.**

**Windows, Apple,
Android, Playstation
and Xbox Supported**

The Black Bull

Reeth's Oldest Inn, serving a range of Real Ales

Comfortable en-suite
accommodation,
Traditional Pub Fayre served daily
Sunday Carvery (booking advised),
Coaches welcome

Tel: 01748 884 213,
Email: bookings@theblackbullreeth.co.uk,
Black Bull, Reeth, DL11 6SZ,
www.theblackbullreeth.co.uk



Open Daily from 11am

Leyburn Arts and Community Centre

July and hopefully the warm sunny weather continues! Would like a little rain for the garden though, preferably during the night! Cannot believe the school summer holidays are approaching!

Highlights in this month include live music to suit everyone, from the 50's & 60's with Matt Jones-Green; a mixture of eras in the Decades Celebration Concert; and the wonderful critically acclaimed production of 'Oklahoma' from the classic 1999 show starring Hugh Jackman and Maureen Lipman.

By request we have another talk, 'Dressing a Tudor Lady' with our inspiring and entertaining local Swaledale historians, Jane and Rebecca. Then to continue our Yorkshire Dales theme we have 'Farming Through the Seasons' a brilliant new documentary promoting the understanding of hill farming, with an introduction by the film team plus a Q & A session. For both these events free coffee and cake are included.

Tickets are on sale now for our Summer Draw, with the money raised going towards our new Community Shed. Tickets are £1 each with a wide range of prizes. This will be drawn in September at our Community Shed Open Day on the 16th.

See our website www.leyburnartscentre.com to book or for more information.

Jeannie Bishop

A.J. CLACHER LTD
Established 1961
PLUMBING & HEATING ENGINEERS

- Gas, oil and solid fuel central heating installations
- All aspects of plumbing and gas installations
- Boiler servicing and repair • Landlord Gas Safety inspections
- Bathroom installations and Plumbing • Heat Pumps and Solar Heating

Unit 38 Forge Way, Cleveland Industrial Estate, Darlington DL1 2PB
Tel. 01325 468372 • E-Mail info@ajclacher.co.uk
www.ajclacher.co.uk



Wensleydale Tree & Horticulture Services (Est. 1995)



David Allen (HND Arboriculture)
Fully Insured (£5 million)
Professional tree work: felling, crownthinning etc. to BS3998

Tel 01969 667364 Mobile: 07811 576108

E-Mail: treesinhawes@gmail.com

www.treesinwensleydale.com

ELLERTON ABBEY ANTIQUES & MRS PUMPHREY'S TEAROOM



Open Thursday, Friday and Saturday 10 - 4
Ellerton Abbey, Richmond,
North Yorkshire DL11 6AN
Tel: 01748 884321
Mobile: 07948 426099

Find us on  

Dales Police Crime Bulletin



Monthly Police Report

May 12th - Jun 10th

We do not report crimes whereby victims could be identified, for example Domestic Violence or harassment, although they are included in the totals below.

- 1 - Road Traffic Accident (injury)
- 14 - RTC (minor)
- 38- Abandoned calls (misdialed/pocket dials)
- 14- Suspicious Circumstances (door to door sellers/ suspicious vehicles etc.)
- 11- Violence
- 3-Antisocial Behaviour
- 4-Theft
- 1-Fraud
- 1-Burglary
- 2-Criminal damage.

In total in the reporting period, for the areas covered by Leyburn, 184 calls were received covering a variety of incidents.

Leyburn Police station covers an area encompassing Arkengarthdale, Swaledale from Hudswell to the border with Cumbria, Wensleydale from the Hambleton to Cumbria borders, Bishopdale, Coverdale and small off-shoot dales. As such it can be seen that it is still a low crime area.

During the reporting period the Leyburn Safer Neighbourhood Team have participated in community engagement such as assisting in a

general garden tidying up at Kirkwood Hall and conducting operations with the mini police (pupils at Hawes Primary school).

Patrols were also deployed to monitor and engage with the movement of the Traveller Community on their annual move through the dales on route to Appleby Horsefair.

Upcoming events are; Cuppa with a copper at The Cornmill, Bainbridge TBC and Bakewell, Askrigg 11th July giving a chance to meet the team informally for a chat.

Operation Byways will also be carried out in conjunction with our Traffic officers and the National Parks Rangers, checking on the movement of vehicles along Green lanes in the area.

We are also asking that you sign up to North Yorkshire Police Community messaging. To sign up, please visit.

<https://www.northyorkshirecommunitymessaging.co.uk>.

You can also view events on the North Yorkshire Police Facebook site.

PCSO Don Watson
PC355 Heather Campbell]
PCSO 5550 Tracie Taylor-Page
PCSO 5777 Sharon Diamond

PROPERTY MAINTENANCE

General Building Work, Dry Lining, Decorating, Electrical Work, Kitchen Fitting, Joinery, Paving, Garden Maintenance, Roofing, pointing & guttering work. Small jobs welcome.

Free estimates.

Contact Martin or Django

Tel 01748 886 465 Mob: 07813 715 120

Email: martinkiss1960@gmail.com

Clarksons

MORE THAN ACCOUNTANTS

Are you looking for more from your accountant?

We believe businesses deserve more than just having their accounts and tax returns filed.

Whatever your accounting or business needs, we offer a personalised service to ensure we assist you in fulfilling your business's potential.

w: www.clarksonaccountants.co.uk e: info@clarksonaccountants.co.uk t: 01969 624999

Thornborough Hall, Leyburn, North Yorkshire, DL8 5AB

Follow Us on Twitter @ClarksonsAcct

Find Us on Facebook @ClarksonsAcct

The Bridge Inn, Grinton

Tel 01748 884224 www.bridgeinn-grinton.co.uk

Traditional coaching inn serving quality food in the restaurant and bars

Open all day. Food 12noon to 2.30pm and 5.30pm to 9.00pm



Recommended in the CAMRA and Good Pub Guides
Music night with local musicians Thursday from 9.00pm
Children and dogs welcome. En suite accommodation

Bellerby Open Gardens and Scarecrow Trail 2023

Enjoy a great day out at Bellerby Open Gardens and Scarecrow trail on

Sunday 2nd July from 10.30am-4pm.

This village of becks and bridges offers delightful hidden gardens and hilarious scarecrows, music in the afternoon and legendary refreshments in the Memorial Hall where there is an outdoor play area. Added to this is plant selling in the Community Garden and a flower display in St John's Church in the village.

You can get inspiration and ideas from some of our lovely gardens, as well as entertainment and good food. Altogether an excellent day out!

Admission is £5 each for adults, children under 16 go free and there is free off-road parking. Proceeds will be shared between local community projects.

Bellerby is a mile north of Leyburn on the A6108. Sat Nav DL8 5QN.

For more information contact:
Chris Akrill at akrillc@icloud.com or on 01969 326190

YORKSHIRE FOOT CLINICS

Podiatry/Chiropody

Alex Kravchenko MChS, BSc Pod (Hons)
Nail cutting, callus, corns &
ingrowing nails

All treated in the comfort of your
home

Tel. Richmond 850020

Or Hawes 667449

Always insist on state registered

S.J.R Plumbing Services

For all of your domestic
Plumbing requirements.

C & G/Advanced C & G Qualified
Reliable With Very Competitive Rates

Based in Reeth

01748-884036

Or 07977-297563

CHARMING OLD COTTAGE IN THE CENTRE OF REETH (sleeps 6+)

Open fire & background heating.

Fully fitted kitchen, dishwasher, fridge/
freezer.

2 bathrooms, 2 double bedrooms, 1 twin bed-
room & attic play area/fourth bedroom with 3
single beds.

Private, secure, rear courtyard area.

Dogs welcome.

Contact Denyse on 01325 722786 or

e-mail denyse00@btinternet.com

www.holidaycottageswaledale.com



**R.A.Lofthouse
Roofing Services
Kirkby Stephen**

We SPECIALISE in traditional and
modern slating and tiling

- Traditional slate specialist
- Re Roof / Repair work
- Slating, flagging & tiling
 - Lead work
- Velux replacement /installation
- Chimney repair/replacement

For a FREE quotation or any
enquires please call:

Tel: 017683 48787

Mob: 07557738016

or email us on:

r.a.lofthouse@outlook.com

**Joan and Gavin
Graveson**

The family of Joan and Gavin Graveson of Low Row are arranging a memorial service for their parents, in Trinity Church Low Row, at 2pm on Saturday 1st July, and afterwards at the Punch Bowl. All friends are very welcome to help celebrate the lives of Joan and Gavin, who contributed so much to the life of the Dale.

There is also a talk and short film in the evening, organised by Sustainable Swaledale and in memory of Joan and Gavin, at Low Row Institute at 7.30pm. Doors open 7pm, cash bar, free entry, raffle. Please let Sustainable Swaledale know if you're coming by email: info@sustainableswaledale.org

Sylvia Crookes, Elizabeth Bedford



Serving food between 12pm & 8pm everyday

Free to join loyalty scheme

No Table Reservations

Amazon, BT Sports & Sky Sports on 3 TV's

Pool Table & Dart Board

Pet Friendly

Monthly Quiz

Occasional Live Music

Warm Welcome

Cask Marque accredited & CAMRA discount

www.thebuckreeth.co.uk

Tel 01748 884 545

Email stay@thebuckreeth.co.uk



**Hudson House
Centre
Reeth**

**Owned by the Community of
the Two Dales**

Community

- Gallery
- Learning
- Library
- Orchard
- Transport

National Park Centre

North Yorkshire CC

Police

Richmondshire DC

Swaledale Festival

Business Forum

Hot drinks vending machine

Internet & WiFi

Local notices & information

Meeting Rooms

Tourist Information & Shop

Open all year

7 days a week

See website for times

Silver Street Craft Unit's
managed by Hudson House.

For all enquiries contact
Jill May.

01748 884485

www.hudsonhouse.info

REETH AND DISTRICT GAZETTE LTD

Fremington
dalesbikecentre.co.uk
tel:01748 884908

Dales



Bike Centre

Cafe & Cakery

SOUPER TUESDAYS
Homemade soup, bread roll,
slice of cake & hot drink
Only: £7 every Tuesday

OPEN EVERYDAY!

Book a Stay
14 beds Bunk & Breakfast

New & Ex Hire Bike Sales
Mountain/Road Bike Hire
E-Bike Hire & Sales
Bike Servicing

**SHOW STOPPER
FRIDAYS**



Every week a 'Showstopper' of a cake!



FROG
bikes



Orange
MOUNTAIN BIKES

Low Row Literary Institute

Craft Fair

Saturday 29th July, 10–3pm

Tea/Coffee Available

Pet Portraits

Felting

Cards/Picture

Plants

Jewellery

Soft Furnishings

Bird Boxes

Preserves

Contact – Louise Waller 01748 886873/07817 128655



KARL LONGDEN PLUMBING

Reeth, North Yorkshire

karllongdenplumbing@yahoo.com

Tel. 01748 889951

Mob. 07969 329893

24 HOUR CALL OUT SERVICE



Jazz at The Station

Returning to the 'Station' Richmond on Friday 21st July after a sell-out performance last year are Swaledale's own 'Good Vibes' trio, playing their unique mix of easy listening jazz, latin and light classical music. The group also appeared at Grinton church and Hurworth last autumn, and husband and wife team John and Jane Hunter have additionally performed at several functions including for the opening of a wine bar in South Yorkshire. John will also be performing at the Brighthouse wartime weekend in June and a similar event at Woodhall Spa in July with vocalist Brandyn Shaw.



Appearing as a guest star at the Station with John on piano and Jane on vibraphone is top UK saxophonist John Padfield from

Liverpool, with whom John used to perform in the West Midlands. Gracie Will will be providing the vocals as usual. "It's a lovely venue" says John "with the opportunity of performing a varied programme of show tunes, jazz standards, a little classical and a few novelties!. This is a particularly poignant event for me as John and I used to perform together in the 1980s and haven't seen each other for over three decades but are finally coming together again to play the music we both love". Tickets for the Jazz & Cocktail evening are £25.00 per person for a delicious two course meal (drinks not included) and some smooth summer jazz - call 01748 825967 or email reservations@thestation.co.uk.

McGarry & Co SOLICITORS

Local Knowledge & Practical Advice

Your Legal Companion

- PROBATE & ADMINISTRATION
- POWERS OF ATTORNEY
- WILLS
- NURSING & RESIDENTIAL HOMES
- AGRICULTURAL MATTERS
- LAND TRANSACTIONS

Offices At:

Barnard Castle

Heaves

mbmcgarry.co.uk

t. 01833 600 160

t. 01969 666 290

e. office@mbmcgarry.co.uk

DL12 8EQ

DL8 3QS

HARKERS COACHES



Hill Top Garage, Reeth

Tele: 01748 884533

Pauls Mob: 07703 559359

**COACH,
PRIVATE
HIRE &
GARAGE**

Coach, Mini Bus and private taxi hire
General vehicle maintenance including services, tyre supply, fitting and balancing.

REETH AND DISTRICT GAZETTE LTD

The Arkengarthdale Hub

With tremendous thanks to our architect Mike Overton of Overton Architects (Ilkley) and our contractors Roebuck and Holmes (Huddersfield) who have done an amazing job, we are pleased to announce the completion of our community project at St. Mary's Church, Arkengarthdale : the Arkengarthdale Hub.

Funding was raised by way of donations and grants to remove several rows of pews at the back of the church, install a mobility ramp and level the floor at the back of the pews to create an open, flexible space accessible to people of all abilities. We have installed a kitchenette and servery to provide refreshments and built a small, stone-faced, slate roofed extension to provide accessible toilet facilities and storage for the new tables and chairs.

We wish to formally thank the following organisations and individuals who awarded grants or gave donations. Without their help, we would never have been able to get this project off the ground. We have now created a wonderful multi-functional space which we hope will enable St. Mary's to continue to play a significant role in local community life for years to come.

Richmondshire District Council/North Yorkshire Council (Community Investment Fund)
The Parochial Church Council of the

Parish of Swaledale with Arkengarthdale
Yorkshire Dales National Park
Garfield Weston Foundation
National Churches Trust
The Duke of Norfolk
Benefact Trust
The Congregation of St. Mary's Church
Hudson House Community Company, Reeth
The Church of England Diocese of Leeds.

In celebration of this achievement, we are having an official opening of the Arkengarthdale Hub on Saturday 15 July at St. Mary's. All are welcome between 2pm and 4pm to enjoy a cream tea and find out about the activities and events that are planned for the rest of the year.

Arkengarthdale Hub Committee

ecodry
carpet & upholstery cleaners

FREE
Professional
Spot & Stain
Remover

Carpet Cleaning

Rug Cleaning

Upholstery Cleaning

Mattress Cleaning

*Proudly serving The Dales
Since 2014*

Leyburn - 01969 622620
Mobile - 07944 774947

www.ecodrycarpetcare.co.uk

REETH AND DISTRICT GAZETTE LTD

FRIENDS' SCHOOL AT REETH TRUST
Charity Number 529603

Grant Applications for the Academic Year 2023-24

Small grants are available to local young people, under the age of 25, attending **full-time** further education, towards the cost of their studies. (Not transport costs).

Applications need to be received before
Monday 25th September.

For an application form, please contact:

Friends School at Reeth Trust Secretary
By e-mail to gaynorhemming@gmail.com

or by post to

Gaynor Hemming, 20 King St, Barnard Castle.
Co.Durham, DL12 8EP

The Old School Muker

Art Gallery & Craft Centre



Guning Lane, Muker, Swaledale, DL11 6QG
www.theoldschoolmuker.co.uk
Tel: 01748 886155
email: ask@theoldschoolmuker.co.uk

Are you or a loved one considering a care home?

Our stunning Nightingale Hall Care home is right on your doorstep.



Here at Wellburn Care Homes we also understand that finding the right care home for you or a loved one can be a difficult time for all sorts of reasons. But with the help of our expert staff to guide you every step of the way, we'll take all the pressure off and help you make the right choice.

Call our dedicated
New Enquiries Team
on 0191 694 1052

Discover more now at:
wellburncare.co.uk

Or call our New Care Enquiry Team:
0191 694 1052


WELLBURN
CARE HOMES

  @WellburnCare

REETH AND DISTRICT GAZETTE LTD

Church Opening Times and Services in July

2nd July	9.15 am	St. Mary's Muker	<i>Eucharist</i>
	10.30 am	St Joseph & Francis Xav. Richmond	<i>Mass</i>
	10.30 am	Low Row URC	
	11.00 am	Holy Trinity Low Row	<i>Eucharist</i>
	11.00 am	St. Edmund's, Marske	<i>Holy Communion</i>
	11.00 am	Reeth Evangelical Congregational	
	6.30 pm	Reeth Evangelical Congregational	
	6.30 pm	Gunnerville Methodist	<i>Mid-Summer Service</i>
9th July	9.30 am	St. Andrew's Grinton	<i>Eucharist</i>
	9.30 am	St Michael's Downholme	<i>Morning Prayer</i>
	10.30 am	St Joseph & Francis Xav. Richmond	<i>Mass</i>
	10.30 am	Low Row URC	
	11.00 am	Reeth Evangelical Congregational	
	11.00 am	St. Edmund's, Marske	<i>Morning Prayer</i>
	11.15 am	St. Mary's Arkengarthdale	<i>Holy Communion BCP</i>
	6.30 pm	Reeth Evangelical Congregational	
16th July	9.15 am	St. Mary's Muker	<i>Holy Communion BCP</i>
	10.30 am	St Joseph & Francis Xav. Richmond	<i>Mass</i>
	10.30 am	Low Row URC	
	11.00 am	Reeth Evangelical Congregational	
	11.00 am	Holy Trinity Low Row	<i>Eucharist</i>
	11.00 am	St. Edmund's, Marske	<i>Holy Communion</i>
	6.30 pm	Reeth Evangelical Congregational	
	6.30 pm	Gunnerville Methodist	

Religious Society of Friends (Quakers)

Quaker House, 7 Grove Square, Leyburn every Sunday at 10.30 am
 The Scout Hut, Quakers Lane, Richmond 2nd and 4th Sundays at 10.30am
www.dalesquakers.org.uk

REETH AND DISTRICT GAZETTE LTD

Church Opening Times and Services in July

23rd July	9.30 pm	St Michael's Downholme	<i>Holy Communion</i>
	9.30 am	St. Andrew's Grinton	<i>Eucharist</i>
	10.30 am	St Joseph & Francis Xav. Richmond	<i>Mass</i>
	10.30 am	Low Row URC	
	11.00 am	Reeth Evangelical Congregational	
	11.00 am	St. Edmund's, Marske	<i>Holy Communion</i>
	11.15 am	St. Mary's Arkengarthdale	<i>Holy Communion BCP</i>
	6.30 pm	Reeth Evangelical Congregational	
30th July	10.30 am	St Joseph & Francis Xav. Richmond	<i>Mass</i>
	10.30 am	Low Row URC	
	10.30 am	St. Andrew's Grinton <i>with Sebastian & Rachel Rab from the Jonas Centre, Redmire</i>	<i>United Parish Eucharist</i>
	11.00 am	St. Edmund's, Marske	<i>Holy Communion</i>
	11.00 am	Reeth Evangelical Congregational	
	6.30 pm	Reeth Evangelical Congregational	
	6.30 pm	Gunnarside Methodist	

Church of England

Reverend Caroline Hewlett

Vicar of the Parish of Swaledale with Arkengarthdale
01748 884 706 carolinejhewlett19@gmail.com

United Reformed Church

G Edward Brown 01748 886 181
edwardbrown@f2s.com
And Sue Alderson 01748 886292
Susana@swaledale.org

Methodist

Reverend Julie Reid
Minister for the Two Dales
01748 823 149
Rev.julia.reid@gmail.com

Reeth Evangelical Congregational Church

The Revd David Levell
07582 575 815
www.reethecc.co.uk

Roman Catholic

Fr John Bane
01748 822 175
www.stjosephsfx.co.uk

REETH AND DISTRICT GAZETTE LTD



The Festival, under the Artistic Directorship of Malcolm Creese, has once again brought some wonderful talent to an outstandingly beautiful part of the Yorkshire Dales. Here are some reviews and pictures to enjoy. Ed

The opening concert of the Swaledale festival 2023, **ChamberMusicBox**.

And what a triumphal opening it was. Played within the venerable walls and roof beams of St. Andrew's Church Grinton, the bright, rich and sympathetic tonal quality contrasted well with the historic environment.

ChamberMusicBox is a group of musicians whose core is that of a string chamber group but who invite members of leading ensembles and principals from top UK and European orchestras to join forces with them to present diverse and often unique programmes. In this instance the strings were joined by Horn player Mark Smith and Clarinettist Anthony Pike.

The programme consisted of three works. The first, a comfortable and, at times, jolly Horn Quintet by Mozart which left one with a smile on one's face and a real appreciation of the partnership between the strings and horn. The third piece was a Clarinet Quintet by Brahms. Equally well known, emotional music with energetic moments and with the instrument exhibiting its full range. The final movement brings peace to the musical journey. It was a wonderful way to finish the programme.

But what of the second, the middle work, bookended by these two well established pieces of repertoire?

Well, this was an interesting surprise. To UK audiences, Heinrich Kaminski is a completely unknown German composer but he was highly regarded in European cultural circles in the 1920s when producing some of his best works. He rose to direct the Musikverein concerts at Bielefeld and to teach at the Berlin Academy of Arts. Carl Orff was one of his pupils. But with the rise of the Nazis, and with a Jewish background, Kaminski was forced out of public office and retreated to the Alps where he continued to compose until he died in 1946 aged 60.

We were treated to Kaminski's Quintet in G for Clarinet, Horn and Strings, a UK premier, which turned out to be in great contrast to the two other, cosy, works. This was not a cosy piece of music but it was fascinating to listen to. It made the audience sit up and take note. We heard forceful playing. We heard slow, profound melancholy and we heard witty music. There were possible jazz influences to be heard; Richard Strauss and maybe even Schoenberg were in there somewhere and the clarinettist confessed it was one of the hardest pieces he'd ever played. This is a piece well worth listening to again, and even again! And now Kaminski's name has disappeared from our consciousness. What a shame if his music is confined to the dusty shelves of a mid European music library.

It was a concert that left us all wishing we had heard even more. A great opening to the Swaledale Festival.

Rosi and Dyno Keatinge

REETH AND DISTRICT GAZETTE LTD

Young musician steps in to save finale
Swaledale Festival finished with a dramatic finale on Saturday 10 June after fifteen days of outstanding music, arts and walking in the Northern Yorkshire Dales.

The final concert in Grinton Church was supposed to feature the world-renowned Doric String Quartet playing music by Haydn and Berg, followed by a Beethoven quintet with the addition of the viola player Brett Dean. However, the Festival's Artistic Director, Malcolm Creese, received a telephone call at lunchtime from their agent who informed him that the first violinist was ill and the Quartet would not be able to attend the Festival. Malcolm and his team had only a very short time to try to rescue the concert, so some quick thinking and frantic phone-calling ensued.

The young violinist Mathilde Milwidsky was about to perform a duo concert in Wensleydale with her pianist Annie Yim as part of the Festival's 'Young Artist Platform' in the afternoon, and - after some delicate negotiation about repertoire - she agreed to play first violin in the final concert with just a few hours' notice.

The other members of the Quartet, who were keen to resurrect the finale,

agreed to travel up and it was decided that the musicians would perform the Beethoven Quintet in the first half, and a quintet by Brahms after the interval.

Not only had the courageous Mathilde never played either piece before - she hadn't even heard the Brahms! The music had to be found online, downloaded, printed and taped together.

Mathilde, who has been named one of Classic FM's '30 under 30' Rising Stars, gave a virtuosic 'Young Artist platform concert' in the afternoon, which included music by Telemann, Arvo Pärt and Elgar as well as Ravel's fiendish *Tzigane*. Moments after she put her bow down she received the music for the evening concert, and after a hair-raising car journey over the high moor from Wensleydale to Swaledale, arrived at the ancient St. Andrew's Church in Grinton in time for a quick run-through with the other players before the audience poured in.

Timothy Culkin and Austin Lynch, who attended the concert, said: "What an amazing way to finish the Festival! A potential disaster turned into an evening of pure joy. And what a stand in ... Mathilde played with the Dorics and Brett Dean as if she had been with them for ages. Not often do we see the whole audience rise to their feet and clap until it hurt! It was affirmation well deserved!"

Malcolm Creese said: "It was sad to have to alter the original programme, but the change led to something extraordinary, the audience having a rare opportunity to hear musicians working together for the first time - a process which is usually confined to



Mathilde Milwidsky (left) performs with Doric String Quartet

REETH AND DISTRICT GAZETTE LTD

the rehearsal room. We all went on a musical journey together, with no idea what would happen, and the result was dynamic and thrilling. Hats off to all the musicians for pulling it off, and especially to the extraordinary Mathilde for bravely and brilliantly saving the Festival finale. Needless to say, she's already agreed to come and play for us again next year!"

As well as public performances, the Festival runs an extensive community and education programme which this year saw world class musicians performing in numerous local schools and care homes. One of these was given by Michael Messer's *Mitra*, a unique collaboration between an innovative British blues guitarist, a Hindustani slide guitar maestro from India and a London-based tabla master. The three musicians performed to around 100 secondary and primary pupils, and talked about their respective cultures and careers. Stephen Boyd, Lead Teacher for Music at Richmond School and Sixth Form College, said: "The musicians brought a completely new sound to our students this morning. A fusion of blues and Indian Classical music seems unlikely, however the players' incredible musicality and dexterity made for seamless transitions between the two genres, creating a unique experience for our students."

In *Talk of the Land: Ancient Sound Waves*, pupils from Risedale School had the opportunity to work with professional artists Rachel Antill and Patrick Green, culminating in an exhibition at The Station in Richmond which was attended by the Prime Minister and MP for Richmondshire, Rishi Sunak.



Natalie Clein



Astronomy on the Reeth Green



VRi above, Claire Martin below



REETH AND DISTRICT GAZETTE LTD

James Thomas, Organist. At Holy Trinity Church, Wensley.

What a wonderful way to celebrate the recent refurbishing of this historic church and in particular the completion of a major overhaul of the 1885 Isaac Abbot organ. Many thanks to the Churches Conservation Trust for their help.

Tom Orde-Powlett of Bolton Castle started the afternoon with an illustrated talk on the fascinating history of Wensley Church and its connections to his family, an extremely ancient partnership. He pointed out many of architectural features of the church, and I was particularly struck by the ossuary of St Agatha, preserved after the demise of Easby Abbey.

The organ, dedicated to Letitia Orde-Powlett, is a truly magnificent beast and easily filled the not insubstantial volume of Wensley church with wonderful sound. The programme, of mostly 19th and early 20th century music was well suited to the instrument, although a chorale prelude by J. S. Bach was rendered with gentleness and subtlety. Yet this classic Victorian era organ was at its very best in the concluding piece by the British composer Henry Smart (1813-1879), in which the full range and pomposity of the introduction contrasted with more lyrical moments. The audience was most appreciative of being privileged to hear the reawakening of this marvellous instrument played by a true expert.

Rosi and Dyno Keatinge

Swaledale Festival will return in 2024 from Saturday 25 May to Saturday 8 June.



Poetry Walk with MaryJane Holmes



The Herschel Players with Julia Doyle



Craig Ogden above, Fourum below



REETH AND DISTRICT GAZETTE LTD

Keld Resource Centre Forthcoming Events

2nd July: Over 50 Years of Mountain and Fell Rescue in the Upper Dales
18.00 pm - 20.00 pm: Keld Old School

Public talk by Ian Speirs providing a fascinating account of the history of search and rescue in the upper dales. Charge £10 pp.

6th July: Wild Swim & Picnic
11.00am - 14.00 pm Wain Wath Force near Keld

Join experienced local wild swimmer Susan Baty-Symes for an exhilarating group swim at the beautiful location of Wain Wath Force. Attendees are invited to bring a picnic for after the swim and must be competent swimmers. Charge £10 pp

8th July: Willow Sculpture Workshop
10.00am - 17.00pm Keld Literary Institute

A full day workshop learning how to create a willow curlew sculpture. Charge £69 pp including all materials and loan of tools. Limited places available.

26th July: A Study of Contrasts: Yorkshire Smelt Mills 19.00 pm - 20.30pm Reeth Memorial Hall

Public talk by lead mining expert Richard Lamb focusing on the contrasts of Grinton smelt mill and the Octagon smelt mill that once stood in Arkengarthdale. The talk also covers the process of hushing in the local area. Charge £7 pp

6th August: Exploring Swinnergill & Arngill 10.30am - 14.30pm

A scenic circular walk led by Chris Pearson, whose family farmed on the land for many years, covering lead

mining and farming traditions of the upper dale. Meet outside Keld Resource Centre. Charge £7 pp

17th Sept. An Afternoon with Bob Guy 14.00pm - 16.00pm: Keld Old School

Informal public talk with life-long Swaledale resident Bob Guy remembering his early years farming on Oxnop and his years as a builder in the dale. An open question and answer session will follow. Charge £7 pp. Afternoon teas will be served afterwards for donations to KRC

Full details and tickets available via Eventbrite, or Email helenguy47@gmail.com



<p>OPEN ALL YEAR ROUND, EVERYDAY</p> <p>SWALEDALE WOOLLENS</p> <p>MUKER-IN-SWALEDALE, RICHMOND NORTH YORKSHIRE</p>  <p>Celebrating 40 Years</p> <p>The Quality is Legendary... ...The Choice is Endless.</p>	<p>TAKE HOME A PIECE OF THE DALES</p> <p>Call into our shop in Muker Upper Swaledale and see what unique garments we have on display from hand knit cardigans, sweaters, hats, scarves & gloves to machine knit sweaters & cardigans for both ladies & gents. We also stock sheepskin rugs, slippers & gloves.</p> <p>WE ARE OPEN EVERYDAY</p> <p>Tel. 01748 886251</p>
<p>Email: mail@swaledalewoollens.co.uk or visit our website where you can order online: www.swaledalewoollens.co.uk</p>	

Property Maintenance & General Building

Building work & property maintenance undertaken

Plumbing, tiling, plastering

Kitchen & bathroom fitting

Joinery works

Small jobs welcome

Free No Obligation estimates

Also detail plans prepared for planning applications

Contact Gary

Tel. 01748 886691 / Mob. 07896 147207

E-mail Swaddyman@gmail.com

A. HOWARD JOINERY

no job too small

01748 884045

andrewhowardjoinery@gmail.com

Rose Cottage

Just off the village green in Reeth

Sleeps 4

Dogs welcome

Tel 01964 562239

Email: rosecottagereeth@gmail.com

Orchard Caravan Park

Idyllic setting in the market town of Reeth, nestled next to the river Swale in the heart of beautiful Swaledale.

Orchard Caravan and Camping Park is the ideal location for a tranquil and relaxing break, or for those who seek an active holiday to enjoy walking and biking.

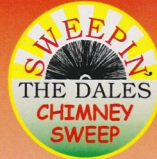
Static Caravan Hire

Camping pod hire

Touring, motorhome & Camping welcome

Email: Office@Orchardcaravanpark.com

Facebook: @Orchardcaravanparkreeth



YOUR LOCAL TRADITIONAL

CHIMNEY SWEEP

NACS & HETAS qualified & registered

We set ourselves very high standards and take every care in your home

We offer a comprehensive service

All types of chimneys swept to relevant BS Std.

Bird guards & cowls, etc. supplied & fitted

Advice freely given, problems solved

Carbon monoxide detectors

Chimney pots replaced

01765 688078

www.sweepinthe dales.co.uk

Stove Refurbishment

Stove servicing and repair

Solid fuel stove installations

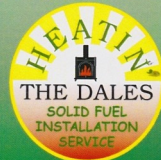
Stainless steel flexible linings

Stainless steel rigid flue systems

Only high quality components are used

HETAS qualified & registered installer

STOVE INSTALLATION



Swaledale Villagers Record Swift Nest Sites

Nineteen volunteers spread across Swaledale and Arkengathdale are mapping the nest sites of a bird which is providing the 'sound of the summer' in the Yorkshire Dales National Park, yet is in severe decline.

The volunteer recorders are out most evenings watching swifts, and will continue to do so until the birds return to Africa in August.

As well as monitoring and mapping existing nests in homes and barns, the volunteers have put up eight nest boxes, mostly in and around Gunnerside, to help the village's colony of swifts expand.

The 'Wing It' project, which is now in its second year, is being co-ordinated by the community group, [Sustainable Swaledale](#). A grant from the National Park Authority's [Sustainable Development Fund](#) enabled the group to buy power tools and ladders to make and install the nest boxes.

The grant has also funded the purchase of a video camera, which is filming swallows as they build a nest in an outhouse behind Two Dales Bakery in Reeth. People can currently view live footage on a tablet on the bakery counter.

One of the 'Wing It' volunteers, Rachel Antill from Gunnerside, said the project was closely linked to Sustainable Swaledale's work to restore species-rich hay meadows and create native woodland and hedgerows.

She said: "Once you start watching the birds, it's really noticeable where they feed. You walk through a meadow

and there are literally bucketloads of swifts and swallows swooping down all the time feeding on insects. And then you can go just two fields down and there is nothing there in the sky. So it's really obvious how important the hedgerows, the meadows and the trees are to these visiting migratory birds, because without them the insect population just isn't strong enough to support them."

Fellow volunteer Stacey Adlard from Low Row said: "The data collectors are recording where they see the birds foraging and the kind of habitats that they are foraging over, the idea being that if everyone keeps sending in records we can piece together the jigsaw and work out which bits are particularly important. We've got 19 people in Swaledale and Arkengarthdale monitoring a little hub each - often it's their village, or the fields around their house.

"The nests are the one thing you can follow year after year. When you see swifts flying above they could be passing through, or they could be the ones from Reeth out for a jolly. Whereas the nest sites you can actually see and record, and see if they are occupied year after year. From that we will get an idea of whether the population, or at least the number of breeding birds, is going up or down."

Buildings in and around Gunnerside were chosen to host new nest boxes because the village is considered to support a healthy swift colony.

Rachel Antill explained: "House martins, swallows and swifts are colony-based birds and prefer to make new nests in close proximity to nests that already exist. They like to have neighbours.

REETH AND DISTRICT GAZETTE LTD

"We've put eight new boxes up this year and that took us eight separate installation trips, and each trip required a team of four people. The equipment we bought using the Sustainable Development Fund grant has been essential for not only making the boxes but most of all for installing them. We installed one on Kisdon Cottage, which is just above Muker, at a height of 7 metres, so two long, sturdy ladders were needed."

The Member Champion for Sustainable Development at the Yorkshire Dales National Park Authority, Richard Foster, said: "Towns and villages in the National Park are brought alive by colonies of screeching swifts. The swifts are the sound of summer. It's great news that we have local people who are coming forward to care for them.

"The swift is a red-listed bird of conservation concern and will be a 'species of conservation importance' in the forthcoming Nature Recovery Plan for the Yorkshire Dales National Park. This is a species in need of bespoke conservation projects - a helping hand from people - to stand a chance of adapting to climate change and retaining stable populations. The National Park Authority is very pleased to be supporting one such project, 'Wing It', through the Sustainable Development Fund."



Cosy Holiday Cottage

Attached to owners' farmhouse
on hill farm in Arkengarthdale.
Sleeps 2. No pets. E.M. on request.

Mrs Gladys Atkinson
Tel. 01748 884550

3D Cross-Stitch



The Nutmeg Gallery

Dozens of models on display together with kits, accessories and the full range of DMC stranded cotton. Normally open Mon-Fri, and Saturday afternoon.

Reeth Dales Centre, Off Silver Street,
Reeth, DL11 6SP, 01748 884926



www.3dcrossstitch.co.uk



TWISTED
HAIR • NAILS • AESTHETICS

HAIR, NAILS AND AESTHETICS

Aqua Facial
Micro Needling Facial
Scalp Micropigmentation
IPL Laser Treatment
Thread Vein Removal
Skin Tag Removal
Brow Microblading and Ombre
SPMU Eyeliner and Lip
HIFU Skin Tightening

Tel Hawes 01969 667449
info@twistedah.com

REETH AND DISTRICT GAZETTE LTD



Join us for
A French Evening
Friday 11th August 7pm
Memorial Hall Reeth
hosted by Friends of Marrick



A menu of delicious French foods, live music, raffle
Bring a Bottle

Tickets £15 per person from Reeth Post Office or phone
Judith on 826793

Hudson House

Your valuable community asset
Rooms for hire

Suitable for meetings, lectures, talks,
training or social events.

The Meeting Room - maximum of 30
people.

The Meeting Place (evenings only) -
maximum of 10 people.

Access to PCs, Internet, printer, photo-
copier, laminator and kitchen facilities.

The Orchard Gallery for hire

Suitable for exhibitions of paintings,
photographs and other artwork.

Own entrance through the garden.

Sales can be handled for you.

For prices (special rates for community use),
bookings or more information please
contact Jill May on 01748 884 485 or
admin@hudsonhouse.info

J. N. & E.
Capstick

INSURANCE CONSULTANTS

*A local company small enough to care, but big enough to
compete*

FARM - COMMERCIAL - HOME - MOTOR INSURANCES

Kirkby Stephen 017683 72285 - Sedbergh 015396 20124

Email: sales@capstickinsurance.co.uk

www.capstickinsurance.co.uk

WINNER
CIR **COMMERCIAL
INSURANCE
AWARDS 2017**
BROKER CLAIMS TEAM
OF THE YEAR

50 YEARS
IN A.C.
Capstick
INSURANCE CONSULTANTS
TRADING FROM 1968 TO 2018

J N & E Capstick Insurance Consultants are authorised and regulated by the
Financial Conduct Authority



ANDY MALTON LTD – DALES GENERAL BUILDING CONTRACTOR



Dry lining/ plastering/ ceiling work

Roofing/ pointing/ guttering work

Most building repair work carried out

Free estimates - No job too small

01969 624979 / 07837645104

andymalton56@gmail.com



REETH AND DISTRICT GAZETTE LTD



North Yorkshire Fire and Rescue Service

The sun has been beating down for the last few weeks and temperatures are high. Do your bit to relieve pressure on our colleagues in the NHS and Ambulance service and remain properly hydrated at all times.

Reeth Station

We've lost a crew member and gained one this month. Pete Gillson was with Reeth for 3 years and we would like to wish him all the best for the future.

Training

Reeth have had some varied training going on at our drill nights the last few months. Having a new recruit is always good for a different perspective on operations and only helps to forward everyone's learning. The picture below shows an evening where we used our airbag kit to practice lifting a heavy piece of farm equipment off a casualty.

Can YOU help?

We're always on the lookout for empty buildings or different areas of risk to train for so if you have anywhere we could use please contact the fire station through social media on Facebook search for Reeth Station or post a note through the side door at the station with your phone number so we can get in touch.



Wildfire Lookout!

At the time of writing we haven't had any rain for several weeks so the land is becoming particularly dry. If you're new to the area or just visiting you will have most likely passed through some moorland to get to us. This moorland is extremely dry and at a high level of risk from wildfire.

Here are a few things you can do to help reduce the risk

- put out cigarettes fully and NEVER throw them out of car windows.
- Don't have BBQs or open fires on moorland and never leave them unattended
- If you see a fire in the open report it to the fire service on 999
- Do not attempt to tackle anything that could not be put out with more than a bucket of water
- Don't leave bottles or glass lying around as sunlight shining through them can start fires

It's also important to be prepared for potential flooding. After a long dry spell the ground becomes hard, so when it rains the water doesn't soak into the surface of the soil and immediately becomes run off, with the potential to cause flash flooding. Remain vigilant and for emergencies involving inland rivers and water ways call 999 and ask for the fire service.

If Trees Could Talk... 6 - Industry (500 to 200 years ago)

There was a shortage of woodland in Swaledale in the mid seventeenth-century: wood and timber were being imported in significant quantities from Coverdale and County Durham to supplement local supplies.

Lead mining and smelting have a long history in Swaledale and Arkengarthdale, dating back at least to Roman times. People familiar with the local landscape will be aware of the visual legacy of mining in the form of hushes, spoil and the stone remains of mines and mills, but mining has also modified our woodland landscape. Before about 1600, the simple bales used for smelting local lead were typically found in elevated positions above woodland, where the wind would be strong enough to drive up the temperature from burning large quantities of local wood. Later ore-hearth smelting mills also used wood for fuel until wood was replaced by peat and coal in the eighteenth century. The expansion and development of mines into complex underground networks increased the demand for timber for shoring.

Much of the woodland that survives in Swaledale today is close to old bale sites. This is the opposite of what you might expect if smelting was responsible for the large-scale destruction of woodland. Instead, there was a mixture of responses to the increased demand for wood for industrial use, one of which was to

manage woodland more intensively to ensure a sustainable supply.

For example, Lord Wharton encouraged his tenants to enclose their wooded areas and turn them into coppices, and in 1677 he asked his agent to look into enclosing woods at Crackpot so they might be 'sprung and preserved'. 'Spring' is another word for coppice: one that regularly appears in field and place names.



Coppicing is a technique whereby trees are cut down to near ground level to encourage new shoots to grow. When the shoots reach a usable size, the process is repeated. Coppicing yields considerably more wood than other management techniques, but the new shoots will be destroyed by livestock if grazed. This is why coppices needed to be enclosed and it also accounts for why some stone walls follow very irregular lines: the walls were built

REETH AND DISTRICT GAZETTE LTD

around existing trees. Records show that large areas of coppiced woodland were managed to supply smelt mills, especially lower in the dale around Marrick and Downholme, but also further up dale where former wood pasture was enclosed.

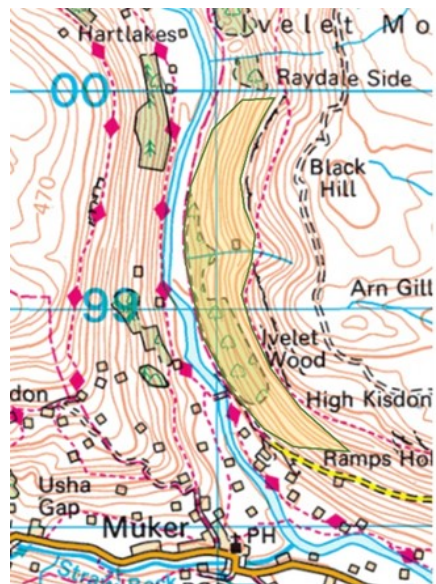
It's around 1650. We're in Ivelet Wood, a mile north of Muker, just above Rampsholme Bridge. It's a busy place. In front of us a couple is loading ponies with kiln-dried wood ready to be taken down dale to a smelt mill. Other members of their family are processing recently cut trees, separating roundwood to be dried in the kiln from brushwood used to fire it. There is smoke in the air from one of several charcoal platforms operating within the wood. The charcoal will be used to generate the higher temperatures needed for re-smelting lead slag.

Where common grazing rights were maintained, as on Ivelet Common Pasture north of Muker, enclosure wasn't an option, but trees were still harvested from Ivelet Wood (which occupies the slopes of the Common) throughout the sixteenth and seventeenth centuries to supply Swaledale's mines. The remains of some fifty charcoal burning platforms and several wood drying kilns have been discovered.

Today, hazel, birch and hawthorn are the most common trees here. Analysis of several platforms shows that ash was the favoured wood for making charcoal: a tree no longer found. It's not known for sure what wood was

dried in the kilns, but hazel, bird cherry and hawthorn brush were used to fire them.

Tithe maps from the 1840s show Ivelet Wood being two to three times larger than it is today, shown below as a (yellow) overlay on the modern OS map. The map evidence suggests that the main loss of woodland happened after lead mines stopped using wood for fuel.



© Crown Copyright

It seems likely that centuries of traditional woodland management in Swaledale and Arkengarthdale (in the form of pollarding and coppicing) came to an end because of wider changes allowing fuel and timber to be brought into the dales from further afield.

Sources include: 'A woodland history of North Yorkshire: a multi-disciplinary study of post-glacial woodland history', Thomas Gledhill, 1995

Drawing by Jocelyn Campbell reproduced by kind permission of Alison Piet and Swaag.

Rob Macdonald

REETH AND DISTRICT GAZETTE LTD

Ard Rock 2023

On 21st-23rd July, riders and their families will travel from all over the UK (and abroad) to enjoy the Ard Rock Bike Festival, which takes place next to the Dales Bike Centre and in the fields below Reeth. Visiting the event is free for local residents, and we encourage you to bring children to the event as there will be free demo bikes, coaching and a test track.

The 2022 event raised over £15,000 for charities, including the Yorkshire Air Ambulance and Swaledale Mountain Rescue, and made donations to local services, including the Reeth Doctors Surgery and Reeth Primary School, as a thank you to the local community.



Ard Rock is an internationally renowned mountain bike event that brings a significant boost to the local economy, and we feel privileged to call Swaledale home.

Joe Rafferty

M.W Waste Services Environmental & Drainage Specialists

Septic Tanks Emptied & Cleaned
Blocked Drains Cleared Fast
Grease Traps & Interceptors Emptied
Soakaways Rebuilt & Repaired
Gully Emptying & Street Cleaning
Refuse Collection
Septic Tanks Installed
High Pressure Drain Jetting
Mobile Steam Cleaning
Sewage Plant Maintainance
Industrial & Domestic Work Carried Out

Low Hang Bank Depot
Melsonby
Richmond
North Yorkshire
DL10 5NQ
Tel: 01325 377860/377850
24/7 Call Out
[Http://www.mwwaste.co.uk](http://www.mwwaste.co.uk)

Clear Your Blocked Drains Fast With Our High Pressure Jetter
Free Quotes & Estimates

VICTORIA DESIGN GROUP LTD
Consulting Civil & Structural Engineers

**Consulting Structural & Civil
Engineers**

*Structural Surveys
All design work undertaken
whether domestic or commercial,
large or small*

Telephone: 01748 886717
Email: office@vdg.co.uk
Website : vdg.co.uk



Home Run

Pet sitting, House sitting, Dog walking

I offer a friendly, personalised pet and house sitting service in and around Swaledale.

Nicola – 07866 336924
nicola@homerundogsitting.co.uk
www.homerundogsitting.co.uk





Marrick Priory
Outdoor Educational and Residential Centre

Enhancing life skills through adventure

Cook Required

At Marrick Priory near Reeth

Shift pattern - morning 8am till 1pm or evening 4pm till 8pm

To provide a cooked breakfast, packed lunches and evening meals for residential groups

Additional cleaning duties may be available

Good rates of pay, meals provided and excellent working conditions..

Own transport is necessary

Please contact the Head of Centre or a member of the team on 01748 884434 or email office@marrickpriory.co.uk

***For Fun &
Adventure***



***Make new friends
Learn new skills***

COME & JOIN OUR LEADERSHIP TEAM

We are looking for a Beaver Scout Leader & Assistant Leader. Beaver Scouts are aged 6-8

We would welcome a further Assistant Cub Scout Leader. Cub Scouts are aged 8-10.5

We would welcome a further Assistant Scout Leader. Scouts are aged 10.5 -14

All sections are open to both girls and boys.

Full training is given to Leaders and a uniform is provided.

Being involved as an adult in Scouting is great fun and very rewarding.

Find out more contact Paul Roger on 0786 6532137

Website: www.swaledalescouts.org.uk www.richmondshirescouts.org national website. www.scouts.org.uk

REETH AND DISTRICT GAZETTE LTD



**SWALEDALE
MOUNTAIN
RESCUE
TEAM**



**In an emergency DIAL 999 ask for the POLICE then
Mountain Rescue / Cave Rescue /
Mine Rescue / Flood Rescue**

Charity Commission Registration No: 1201870, providing Mountain and Cave Rescue in the Northern Yorkshire Dales

The team is made up of highly trained volunteers available, 24/7 in any weather, any time.

Mountain and Cave Rescue Team

**Incidents May 9th to 9th June
6 Incidents this edition. On average
we respond to between 40 to 50
calls each year.**

Incident 18: 29/05/2023: While incident 17 was running we received a call from the ambulance service to assist with an injured paraglider on Addlebrough hill. As the first team members arrived on scene the casualty was being assisted into the air ambulance by the crew and paramedic. A busy Bank holiday weekend!

Incident 17: 29/05/2023: While the team were supporting the Finghall barrel push we were called by North Yorkshire Police to assist with a high risk missing person search. Cleveland Mountain Rescue Team called to assist as it was near the boundary. Missing person located safe and well.

Incident 16: 28/05/2023: Called to assist the ambulance service with the rescue of a walker who had fallen 10m from crags



above Richmond copper mine. Due to the nature of the incident an air ambulance was also requested. Evacuated by the team to the ambulance. Thanks to our visitors from Cleveland MRT and Teesdale MRT who assisted us.

Incident 15: 18/05/2023: Called by the Ambulance Service to assist with the rescue of an injured walker in farmland near East Layton (right on our northern area). Treated by the Ambulance Service and evacuated by the team.

Incident 14: 13/05/2023: Called by the Ambulance Service to assist with the rescue of a walker having a medical emergency. Stood down while responding as the ambulance service had managed to walk the casualty to the road.

Incident 13: 10/05/2023: Called by the Police to search for a missing person in the Washton area. As the search was commencing they reported that the missing person had been located safe and sound.

We have stock of our 2023 neck tubes. Get one from the Kings Head Gunnerside or via eBay, just search for **SWALEDALE MRT Neck Tube, 2023 New design. Charity Fundraiser for SMRT.** Or drop us a message via our Facebook page, email us at secretary@swaledalemrt.org.uk, or use our online contact form on the website, swaledalemrt.org.uk



two dales bakery
reeth

ARTISAN BAKERY & CAFÉ

Delicious breads and pastries
Food served all day including vegetarian/vegan options
Well behaved dogs welcome

Visit us at the Reeth Dales Centre,
Silver Street, Reeth,
North Yorkshire, DL11 6SP

Please see our website
for current opening times
www.twodalesbakery.co.uk
☎ 01748 905001

Support the Reeth & District Gazette

Order your printing from us and we will credit 10% of the value of your order to the Gazette account at no extra cost to you!

Quote Gazette when ordering

Booklet Printing

- ✓ Reports
- ✓ Manuals
- ✓ Brochures
- ✓ Catalogues
- ✓ Newsletters



Saddle Stitched - Perfect Bound - Wire Bound

From your computer files or hard copy

THE OLD TEMPERANCE BOOKSHOP

Reeth, Richmond, DL11 6TE
Tel. 01748 884185

Christian books & cards, Fairtrade crafts and food



Beside the village green in Reeth, we are 50 yards up from Reeth Evangelical Congregational Church

Opening times:
1.30pm - 4.00pm Thurs, Sat
10.30am - 4.00pm Fri
Closed all day Saturday 22nd July

NCR set Printing

- ✓ Invoices
- ✓ Estimates
- ✓ Order Forms



Fast Turnaround - Padded - Loose Sets



Reflections PhotoGraphic Services

Tel: 01833 690733
www.refprint.co.uk
email: sales@refprint.co.uk

SWALEDALE

'POTTING ON THE NEXT GENERATION IN THE TWO DALES'



PLAYGROUP

Find us on Facebook – Search Seedlings Reeth

REGISTERED CHARITY NO- 1045715

Swaledale Seedlings playgroup

'Stay and Play' Sessions

Mondays at Gunnerside Village Hall
& Thursdays at Reeth Memorial Hall
9.30am until 11:25am

Open to all children under the age of 5

£2 per child per session

Pop into a session or message us on Facebook
for further information

STURDY TRAVEL

INDEPENDENT TRAVEL SPECIALISTS

Now at 1 Golden Lion Yard
Market Place, Leyburn DL8 5AS

For all your travel needs, home and abroad

Call: 01677 422826

Email: robert@bakewelltravel.co.uk



Part of Bakewell Travel



Remedial Massage

*musculoskeletal conditions & injuries,
headaches, stress and anxiety*

Manual Lymphatic Drainage

lymphoedema, post-surgery

Jennifer Thursfield NAMMT
MLDUK CNHC

Tel: 07889 546608 • Based in Richmond

jtremedialmassage@gmail.com

www.jtremedialmassage.co.uk



We're Recruiting!

Production Operatives

Permanent, full-time roles at our sites in
Hawes and Ripon (no weekends)
Part-time / job shares considered.

Front of House Team & Kitchen Assistants

Full & part-time positions at our Visitor
Centre in Hawes. Working across 5 days (no
evenings)

Student and Seasonal Vacancies

Front of house and retail positions available

**Excellent rates of pay and staff
benefits.**

Find out more at

wensleydale.co.uk/work-with-us

Reeth Memorial Hall

Friday 28th July - Tom Leary & Eric Sedge - North-east virtuoso fiddler, Tom, has played with Lindisfarne and Feast of Fiddles and is a member of The Joe Brown band. Singer-songwriter, multi-instrumentalist Eric (now based in Reeth) found success with The Broadside Boys and more recently launched his solo career, including playing at Cropredy. Tickets **£15** (£17 door).

Saturday 5th August - Duncan Chisholm & Hamish Napier - One of Scotland's most recognised and accomplished fiddlers and composers joins multi-instrumentalist, vocalist and composer. Music inspired by Highland landscapes and heritage. Tickets **£17** (£19 door).

Friday 25th August - Bob Fox - North-east singer and musician, Bob Fox was the Songman in the National Theatre's production of WarHorse and is also a member of The Pitmen Poets. Tickets **£15** (£17 door)

Tickets from Reeth PO or phone John Little (01748 884759) or visit www.reethmemorialhall.co.uk - tickets $\frac{1}{2}$ price u16s. All concerts 8pm.

NORTH YORKSHIRE COUNCIL

Come and meet your local Councillor

Cllr Yvonne Peacock
will be at
Hudson House, Reeth
on
Friday 21st July 2023
10.00 am until 12 noon

James Peacock



Solid Fuel Merchant Bainbridge

Good quality fuels at
competitive prices.
Deliveries to Wensleydale,
Swaledale and Coverdale.
No delivery too small.

Tel. 01969 650212/650465

Email:

jamespeacock@btconnect.com

www.james-peacock.co.uk



Museum premieres Hester Cox Meadow Art

Artist Hester Cox has collaborated with the Dales Countryside Museum to portray the abundant but 'ephemeral and fragile' life of traditionally managed upland hay meadows with a special exhibition bringing together eight years' worth of her work, including a series of new, Marie Hartley-inspired linocuts depicting the flowers, insects and birds of three meadows near her home in Horton-in-Ribblesdale.

The special exhibition, to run until 17 September, is called 'Within These Walls'. It is the title given to a stunning, large-scale work first installed in a field barn in 2017 and which is now being shown for the first time in a gallery setting, at the museum in Hawes.

Traditionally managed species-rich upland hay meadows are one of the special qualities of the Yorkshire Dales National Park, which still contains almost 1,000 hectares of species-rich meadow land, half of what remains nationally.

In 2020 Hester Cox was commissioned by the Dales Countryside Museum to make prints of the woodblocks created by the museum's founder, Marie Hartley. This was the inspiration for her 'A Year in the Meadows' linocuts.

Speaking about the July linocut, featuring the 'red-listed' endangered curlew, she said: "Last year a pair of

curlews came back to the larger of the three meadows and nested. We saw them raise and successfully fledge four chicks. I couldn't believe it, I was really worrying about them, but they survived because the field margins didn't get cut, and there were lots of plants such as meadowsweet to hide away in. I was able to see them after the hay had been raked into rows and baled and I saw them all fly off towards the end of July."

The centrepiece of the exhibition, however, is the 'Within These Walls' installation, created for the 2017 Grassington Festival. On one panel, thirty swallows are block printed; all are in flight and each one is different. Hester Cox said: "It's five four-metre-long panels, and it was six months of work. If you were laid down in a meadow looking through the grasses and flowers, it's a cross section of the most important species you would see."

Derek Twine, who is the Member Champion for Promoting Understanding at the Yorkshire Dales National Park Authority, which runs the Dales Countryside Museum, said "The 'Within



REETH AND DISTRICT GAZETTE LTD

These Walls' exhibition can be seen as a tribute to the nature-friendly farmers of Ribblesdale and the wider National Park. Meadows need to be managed. They need to be grazed and have muck put on them. The grass needs to be cut, dried and gathered in a specific way. As Hester Cox has said, you can't just plant a load of seeds and walk away and leave it. Flower rich hay meadows depend on the farmers."

'Within these Walls - Haytime in the Yorkshire Dales', can be seen seven days a week at Dales Countryside Museum in Hawes until the end of September. Tickets are £4.90 and entry to the special exhibition is included in the admission price. Children are admitted free.



YORKSHIRE DALES
National Park Authority

R. & W. GIBSON & SON Ltd.

CERAMIC WALL & FLOOR TILERS

SHOWROOM NOW OPEN

Monday - Friday: 9.00am - 4.30pm

Saturday: 10.00am - 1.00pm

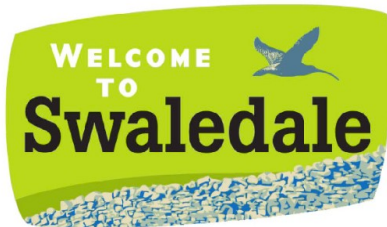
(or by appointment)

At Borough Road,
Gallowfields Trading Estate
DL10 4SX

Tel. 01748 - 822682 (Home)

Tel. 01748 - 821909 (Showroom)

"We cover the Dales"



S A B F

Swaledale & Arkengarthdale Business Forum

Members, get assistance to
enhance or update your entry

Non-Members, send your
details for a basic entry

visit our website
www.swaledale.net

Packed with useful information for
visitors and locals alike, including
a comprehensive services directory

Martyn Leaver

Dry Stone Waller

- Farm or domestic work
- Drystone or facemalling
- Fence repairs and paving
- Misc jobs etc

Thwaite 01748 886025
Mob: 07971 456 043

Hindsight

Accountants LLP

Tony Fava

- Bookkeeping, Payroll and VAT Returns
 - Annual accounts and tax returns
 - Company Formations

11 Finkle Street, Richmond, DL10 4QA
Tel: 01748 822049

Email: tonyfava@hindsightaccountants.co.uk

Over 40,000 homes SOLD to pay for long term care...

...Make sure yours isn't one of them

Failing to plan for the future can have expensive and upsetting consequences if you are incapacitated or die.

At Prior Knowledge we can help you take the right steps now, to protect your home, safeguard your savings, and ensure your wishes are respected.

If you want to discuss a Will, Lasting Power of Attorney or asset protection, I'm happy to visit you in your home, at a time that suits you best.

There's no hard sell and no initial charges. Call me to find out more.



- ◆ Wills
- ◆ Estate Planning
- ◆ Long Term Care Planning
- ◆ Lasting Powers of Attorney
- ◆ Funeral Plans

T: 01756 523253

M: 07901 542838

E: marcoskallou@priorknowledge.co.uk

www.priorknowledge.co.uk



PriorKnowledge

Hindsight is great...but prior knowledge is even better

Qworkery, 12b Otley Street, Skipton, North Yorkshire BD23 1DZ

REETH AND DISTRICT GAZETTE LTD

Wensleydale Concert Series in July

We have two concerts coming up in July: the first is a piano recital by Ivana Gavrić on 8th July and the second is a piano trio concert by Pixels Ensemble on 22nd July. Both concerts are at St. Andrew's Church, Aysgarth at 730pm. Full details and tickets (£15 for adults, £1 for anyone in full time education) are available at our website www.wensleydaleconcertseries.co.uk. You can also book tickets by telephone via our agent Ticketsource on 0333 666 3366.

Ivana Gavrić was born in Sarajevo but now lives and works in the UK and performs internationally. She is a truly



wonderful pianist, her playing described as "altogether of an extraordinary

calibre" (BBC Music Magazine), "notable for its beautiful sound, musical integrity and introspection" (The Independent) and "impressive, insightful, ravishing" (Washington Post). Ivana's concert will include music especially written for her by Cheryl Frances-Hoad as well as music by Janáček, Grieg and Rachmaninoff.

The Pixels Ensemble, for our second July concert, consists of pianist Ian Buckle, who has played before in WCS, and this time he is joined by violinist Thelma Handy and cellist Alex Holladay. Thelma and Alex both enjoy solo and chamber careers as well as

being permanent members of the Royal Liverpool Philharmonic Orchestra (indeed Thelma is the leader of the orchestra). Their programme includes some gorgeous music by Mendelssohn, Schubert and Schumann.

If you have any questions about WCS please call Carol Haynes or Liz Sowter on 01969 663026.



NEW CAR?

We probably can - most makes.

USED CAR?

We surely can - thousands to choose from

LCV / DOUBLE CAB?

Of course we can - new or used.

FINANCE?

We certainly can.
PCP Contract Hire
Lease Purchase Hire Purchase

Part exchange welcome.

Jed Collins, Bridge Garage, Reeth
01748 - 884245
Service MOT Parts Tyres Bodywork

D. J. OLNEY

Painter & Decorator
Interior & Exterior
Call

01748 825472 or
07801 026 006



Swaledale Footcare

Meg Squires MCFHP MAFHP

Clinic Visits at Thornborough Hall Leyburn or
Home Visits Including:

Toenail Cutting

Corn Treatment

Removal of Hard Skin and Calluses

Treatment of Thickened and Fungal Nails

Phone : 01748 884795 or Mobile: 07929065602

Email meg.e.squires@gmail.com

Member of the British Association of Foot Health Professionals



REETH POST OFFICE

More than just a Post Office
Its a 25+ miles round trip to
the big shops.



SERVING OUR COMMUNITY

www.reethpostoffice.co.uk

SWALE HAIR SPA



LOOK GOOD

FEEL GREAT

BE-WELL.

We are open **Tuesday- Friday**, plus every 5th
Saturday.

Call us on: 01748 884627
Email us: info@swalehairspa.com
www.swalehairspa.com

MICHAEL GUY ELECTRICAL

FULLY QUALIFIED ELECTRICIAN

Over 20 years experience working in
the dales in all areas of
electrical work.

Some of my services include:

Complete rewires | Electrical installation
condition reports | Electrical vehicle
charging points | Additional & alterations
to socket & lighting points |

Replacement of storage heaters to modern
eco panel heaters.

Contact Michael :

T: 01748 886097 | M: 07980130017

Mail: info@michaeltguyelectrical.co.uk

Website: Michaelguyelectrical.co.uk

APPROVED ROINTE HEATER INSTALLER
NICEIC APPROVED CONTRACTOR

REETH AND DISTRICT GAZETTE LTD



Friends of the Dales Summer Events
All events are free - find out more about who we are and what we do at: www.friendsofthedales.org.uk

Creative Campaigners 2023

Saturday 29 July 10.15-4.30pm

If you are aged 20-30 and care about the countryside, wildlife and people of the Yorkshire Dales, then why not join the launch of Friends of the Dales Creative Campaigners network at Malham?

Run in partnership with Neil Heseltine of Hilltop Farm - a traditional livestock farm embracing biodiversity and sustainability, as featured in Saving our Wild Isles (WWF, RSPB, NT, Silverback Films). This fully funded day will explore the ways you can create influential environmental messages and promote campaigns in creative ways - e.g. through writing, photography, graphic design, illustration, video, activism or social media. Free travel from Skipton / travel bursaries available for all attendees plus complimentary lunch.

For an informal chat to find out more

What's App: 07483 438346 or email ann.shadrake@friendsofthedales.org.uk

Farm Walk: Cattle, Carbon, Conservation, Climate and Conversation

Wednesday 23 August, 10.30am - 3.30pm

Former Friends of the Dales trustee, Yorkshire Dales farmer, Anthony Bradley will lead a four mile guided walk around key parts of his 90 acre farm near Long Preston, to talk about

some of the science behind grazing cattle in a traditional, rotational way - a methodology that makes economic sense as well as being carbon neutral. There will also be chance to observe habitat creation and look at soil and its role in the carbon cycle. Due to livestock, no dogs are allowed on this walk. Places limited.

Victoria Benn

Imogen Hartley
Qualified MAKEUP ARTIST
(MUA Diploma)

- Bridal
- Any special occasion

07947 210904

Instagram

@thefacetobe



G E BROWN & SON
BUILDING CONTRACTORS

All Building Work Carried Out
Damp Proof Course & Timber Treatment
Specialist Joinery Work
Work carried out by time-served qualified craftsmen

Email: gebrownson@f2s.com
Telephone: 01748 886356

REETH AND DISTRICT GAZETTE LTD



*Beauty and tranquillity.
Quality and care.*

Cat Hole Cottages | Cat Hole House | Thwaite
Richmond | North Yorkshire | DL11 6DR
Tel: 01748 886366

Discover our treasury of gorgeous cottages in Swaledale and Arkengarthdale. Well-equipped, stylish and individual, our cottages offer guests a wonderful holiday in the midst of superb scenery!

To find your perfect cottage call Judith on 01748 886366

www.catholecottages.com

THE HEALING COLLECTIVE

Encouraging health and well being with a range of therapies including
* Reiki * Counselling * Bach Remedies *
* EFT (tapping) * Indian Head Massage *
Treatments for animals also available.

Coach House, Berry's Farm Shop & Café,
Swinithwaite, DL8 4UH. t.0845 474 2383
info@healingcollective.co.uk
www.healingcollective.co.uk



M. GUY - PLUMBING

For all your plumbing requirements
AGAS & RAYBURNS SERVICED
kathrynguy@designermakersmarket.co.uk
Tel: 01748 - 825640

The Gazette is online:
www.2dales.org.uk

The Charles Bathurst Inn ARKENGARTHDALE

Outstanding fresh food served in a warm & friendly atmosphere.

19 en-suite bedrooms with amazing views.
Available for dinners, weddings & meetings.



- Open Lunchtime 12 – 2.30pm Tuesday – Sunday (Closed Monday lunch*)
- Evening Meals every night 6 – 8.30pm
- *Open Bank Holiday Mondays

FOR FURTHER DETAILS OR TO RESERVE A TABLE

Telephone: 0333 700 0779 Website: www.cbinn.co.uk

The Punch Bowl Inn

Outstanding fresh food served in a warm & friendly atmosphere with stunning views of Swaledale.



- Open Lunchtime Tuesday – Sunday (Closed Monday lunch*)
- Evening Meals Mon - Sat 5.30 – 8.30pm, Sun 5.30 – 8pm
- *Open Bank Holiday Mondays

FOR FURTHER DETAILS OR TO RESERVE A TABLE

Telephone: 0333 700 0779 Website: www.pbinn.co.uk

Diary Dates

July

Sat 1st July - Gunnerside Village Hall, TLC afternoon tea 1.30-3.30

Sat 1st July - National Meadows Day, 11:00 - 3:00pm Hazel Brow Farm, Low Row

Thurs 6th July - Keld Resource Centre with Low Row and Keld URC Study Day

Thurs 13th July - Reeth Community Lunch Club, 12-3pm, The Kings Arms, Reeth

Sat 15th July - 10am to noon, Coffee Morning, Reeth Evangelical Congregational Church

Sat 15th July - 9am to 1pm mobile skip service on Reeth Green

Fri 21st July - 7.30pm Summer Jazz & Cocktails Night featuring The Good Vibes Trio + Vocalist and a delicious two course meal are available from The Station Café Bar priced £25.00 per person - drinks not included. Telephone 01748 825967 or email reservations@thestation.co.uk

Thurs 27th July - Gunnerside TLC talk on Dairying in the Dales, 7.30 Gunnerside Village Hall.

Thurs 27th July - Friends of Swaledale Museum AGM, 7pm Reeth Memorial Hall

Fri 28th July - Tom Leary & Eric Sedge - Reeth Memorial Hall 8pm

August

Sat 5th August - Duncan Chisholm & Hamish Napier - Reeth Memorial Hall 8pm

Sat 19th August - 10am to noon, Coffee Morning, Reeth Evangelical Congregational Church

Sat 19th August - Keld Resource Centre with Low Row and Keld URC Study Day

Fri 25th August - Bob Fox - Reeth Memorial Hall 8pm

Sun 27th August - 3pm, Songs of Praise on Reeth green.

September

Sat 9th Sept - Chris Wood - Reeth Memorial Hall 8pm

Thurs 28th Sept - Gunnerside TLC, 7.30pm a talk at Gunnerside Village Hall by Helen Guy on Women's role in the Dales during WW1 and WW2

Thurs 28th Sept - Keld Resource Centre with Low Row and Keld URC Study Day

Sat 30th Sept - Megson - Reeth Memorial Hall 8pm

Music Tuition for all ages with
www.colinbaileymusic.co.uk
07711 211169

Drums & Percussion; Vocals;
Piano & Keyboards; Music Theory;
'Get Musical' Workshops.

Keld Chapel Minister in Residence

1st -8th July: Felicity Barker.

Sunday July 2nd: 10.30am. Morning worship at Low Row URC

Morning and evening prayer each weekday - morning prayer at 9.00am, evening prayer at 6.00pm

Thursday July 6th: 10.30am to 3.00pm. Study day entitled "Finding God through Pilgrimage".

David Wood

Lady Interior Decorator

Painting & Decorating, Competitive rates
Established 30 Years: Based in Richmond
Free estimates, Friendly advice, Est 29 years

Call Yvonne on: 07838378836

Email: yvonesdecor@hotmail.co.uk



PEST CONTROL

Don't let pests become a problem,
call us right away for a professional,
reliable and discreet service.

- Rats / Mice
- Wasps / Insects
- Nuisance birds



SCAN ME

07818 836527

www.yorkshiredalespestcontrol.com



Yorkshire Dales Accountancy
Chartered Accountants

taxation & business advisors

Providing a broad range of accountancy and taxation services
across a variety of sectors, including:

- Accounts • Business Tax • Personal Tax • VAT • Payroll
- Construction Industry Scheme • Capital Gains Tax
- Inheritance Tax • Making Tax Digital

Hawes - Leyburn
2 Chapel Street, Hawes
North Yorkshire, DL8 3QG
E: info@yorkshiredalesaccountancy.co.uk
T: 01969 678128
www.yorkshiredalesaccountancy.co.uk