

# REETH & DISTRICT GAZETTE

ISSUE NO. 330      DECEMBER 2023



*Your local news magazine  
for the two dales*

**PRICELESS**

## REETH AND DISTRICT GAZETTE LTD

### Please become a Supporter of the Reeth Gazette

Issue 1 of the Reeth and District Gazette was published in August 1995. Since its inception its objectives have remained the same, namely, to be a non-profit making, voluntary organisation to provide a newsletter for the community of Reeth and District, including Arkengarthdale, presenting views of residents and visitors and promoting local information, functions, groups or individuals living in the two dales.

It is, and always has been, a monthly magazine, free of charge to all, relying on the work of volunteers in the roles of Chair, Secretary, Editor, Treasurer, Subscriptions Manager and Distribution Manager (indeed at some points in its history many of these roles were carried out simultaneously by the same person!) receiving its income from advertisers who appreciate the opportunity to promote their businesses to a wide readership of both local people and visitors.

The cost-of-living crisis has been mentioned widely in the media over the last year or two, and we in the two dales are certainly not immune from its effects. The Gazette's own costs and expenses have increased at the same time as the number of our advertisers has fallen or their advertising budgets have been cut, leaving us with reduced income. We are at the stage, going into 2024, where our costs are no longer being met by our advertising revenue.

So, what are our options? We are actively exploring grant funding to

bridge the gap but as yet have no definite commitments in that area. We are hesitant to increase advertising rates for a second year as this may cause more advertisers to withdraw. We would therefore like to ask you, dear reader, if you would consider becoming a SUPPORTER OF THE REETH GAZETTE.

Each copy of the Gazette costs about £1 to print and we have other costs on top of that. To help us keep going we would really appreciate a donation of, say £24, enough to print two copies for twelve months. If you could be generous in this way, it would keep the Gazette free for the majority of people. We shall also be exploring a way of making it easy for visitors to make a one-off donation while they are here which will help cover the cost of the extra copies printed in the summer months.

Donations, of any amount you choose, can be made by bank transfer to Lloyds Bank, sort code 77-91-29 account number 40807260. If you use the reference "Supporter" we can gauge how much is donated. We do not need your details and will not store any data about your gift. For those without the ability to pay by bank transfer, there is a collecting box for cash donations in Reeth Post Office.

We feel the Reeth and District Gazette plays an important role in the life of the two dales as well as keeping a large number of interested distant friends in touch with this beautiful part of the world. We really hope you will be generous in your giving. Thank you.

**Jackie Pope, Editor**

# REETH AND DISTRICT GAZETTE LTD

## **Gazette Management Team**

**Chairman:** Susan Miller

Longstone, Low Row, Richmond  
DL11 6NA

Tel: 01748 886 358

E-mail: chairman@reethGazette.co.uk

**Secretary:** Sue Alderson

Holme View, Low Row, Richmond,  
DL11 6PE

Tel: 01748 886 292

E-mail: secretary@reethGazette.co.uk

**Editor:** Jackie Pope

Guildy Hall, Muker, Richmond,  
DL11 6QG

Tel: 07885 498676

E-mail: editor@reethGazette.co.uk

**Treasurer:** Andrew Bedford

Glory Be, Blades, Richmond, DL11 6PS

Tel: 01748 886 974

E-mail: treasurer@reethGazette.co.uk

**Subscriptions:** Elsie Whitehead

5 Place Hill, Reeth, Richmond,  
DL11 6SD

Tel: 01748 884 132

E-mail: subscription@reethGazette.co.uk

**Distribution:** Trevor Brown

The Cottage, Healaugh, Richmond,  
DL11 6UA

Tel: 01748 884 111

Published by

**The Reeth & District Gazette Ltd.**

Company Number: 06541854

c/o The Company Secretary

Andrew Bedford, Glory Be, Blades

Richmond, North Yorkshire DL11 6PS

Tel: 01748 886 974

E-mail: treasurer@reethGazette.co.uk

No material may be reproduced in whole or in part without permission. Whilst every care is taken for accuracy, the publishers cannot be held legally responsible for any errors or opinions in articles, listings or advertisements.

### **ADVERTISING**

For information on advertising and prices, please contact the treasurer. Advertising copy, should be sent to the editor.

The editor reserves the right not to publish any advert or article considered to be inaccurate or misleading.

All articles or items for inclusion should be sent to the editor  
E-mail: editor@reethGazette.co.uk  
or left at Reeth Post Office.

### **The Editor welcomes feedback**

At the editor's discretion, your feedback will be published with Editor responses as appropriate.

Please send feedback to  
editor@reethGazette.co.uk

### **Gazette Deadlines**

The deadlines for the next two months are:

**January issue: November 28th**

February issue: January 9th

### **Posting The Gazette**

To post a copy of this Gazette to a friend or relative will require a Large Letter size and will cost £2.40 second class, or £2.70 first class.

**PLEASE NOTE:** We will endeavour to publish all suitable items submitted by the deadline date but this cannot be guaranteed and is at the sole discretion of the editor.

# 2Dales Digital

Family Business to Support  
you at home



**Need help or friendly advice**

**Call Mike & Anne on:**  
**01748 884737**

**Email us at:**  
**mikebarden@yahoo.com**  
**See us at website:**  
**www.2dalesdigital.co.uk**

**Local Support for your  
Desktop, Laptop, Tablet  
& Console Issues.**

**Windows, Apple,  
Android, Playstation  
and Xbox Supported**



**Marrick Priory**  
Outdoor Educational and Residential Centre

*Enhancing life skills through adventure*

## **Catering and Housekeeping staff member**

Part time flexible opportunities available

We are looking for a member of staff who has cooking and housekeeping experience to join our team and work a flexible number of hours over the year.

Working times: mornings 8am till 1pm or evening 4pm till 8pm

To provide a cooked breakfast, packed lunches and evening meals for residential groups.

Cleaning duties usually fall on Monday, Wednesday or Friday mornings.

Good rates of pay, meals provided and excellent working conditions.

You will join an experienced, supportive team with a great work ethos and provide much needed food for very grateful visitors!

Marrick Priory is close to Reeth in Swaledale.

Own transport is necessary.

For an informal conversation, please contact the Head of Centre or Housekeeper us on 01748 884434

To apply please send a CV or letter of application to

[office@marrickpriory.co.uk](mailto:office@marrickpriory.co.uk)

or by post to Marrick Priory Outdoor Education Centre, Richmond, North Yorkshire DL11 7LD

Further information about what we do please look at

[www.marrickpriory.co.uk](http://www.marrickpriory.co.uk)

## Leyburn Arts and Community Centre

The new LACC volunteer shirts are ordered and should be with us shortly. You will notice our volunteers in very smart purple attire!

Lots for your diaries in December and to put in your new one for 2024!

Friday 1st Dec at 7.30pm sees the launch of our new Comedy Club. Two hilarious one-act plays and a chance to meet the cast afterwards.

The French film Festival continues into Dec with a further two films, on the 5th and 14th of December. 7pm, Tickets £5/£6.

Back by request is Live Cinema from Andre Rieu with his 'White Christmas' concert, on Sunday 10th Dec at 2pm. More live music in our 'A Magical Christmas' concert on Saturday 16th at 7.30pm. More information can be found for all these events on our website or by ringing 01969 624510.

We shall be closing on Friday 22nd Dec and re-open on Tuesday 2nd January with a further event in our Comedy Club season and two National theatre Live Cinema, 'Yerma' and 'Dear England.'

We wish everyone a Happy and Peaceful Christmas and New Year.

**Jeannie Bishop**

Cover photo by Annie Wallace



## Hudson House Centre Reeth

**Owned by the Community of  
the Two Dales**

Community

- Gallery
- Learning
- Library
- Orchard
- Transport

National Park Centre

North Yorkshire CC

Police

Richmondshire DC

Swaledale Festival

Business Forum

Hot drinks vending machine

Internet & WiFi

Local notices & information

Meeting Rooms

Tourist Information & Shop

**Open all year**

7 days a week

See website for times

Silver Street Craft Unit's  
managed by Hudson House.

For all enquiries contact  
Jill May.

**01748 884485**

[www.hudsonhouse.info](http://www.hudsonhouse.info)

## Return to Muker

Last month, after eighty years away, Alan Thompson returned to Muker where, at the age of nine, he arrived as an evacuee, spending five months in the village. In Alan's words they were *"the best five months of my childhood"*.

In 1943 the street in Sunderland where Alan lived was hit during a bombing raid. His mother, concerned for their safety, brought the family to Muker where they lived at The Flat (now Corner Cottage) in the middle of the village. Why Muker, Alan will never know.

Despite the passing of time his memories of the village remain vivid. He

remembers Dick and Louis Guy from Hilltop Farm, two miles away, reaching school by horseback, both sat astride one horse. He recalls walking through the meadows and over the bridge to help strew the hay with Rowly Hestletine at Ramps Holme, and Rowly teaching him to count in the Swardle dialect - yan, tan, tethera. He remembers flicking rose hips at a passing army tank whose crew, in retaliation, turned the gun on the cheeky kids, and the walks he and his mother took to Thwaite, and once all the way up Buttertubs Pass. He remembers singing at the unveiling of wildlife photographer and film maker Cherry Kearton's plaque on the school wall and playing rounders in the school yard (at which he freely admits he was not good). He remembers the crush he

had on Nan Guy, one of the seniors, who mixed the Horlicks with a plunger. He even recalls the taste of the best gooseberries he's ever eaten, picked from a bush by the side of Straw Beck. The contrast between his life in the Victorian terraced streets of Sunderland and the wide-open spaces of Upper Swaledale must have been immense.

At the time Alan was an evacuee, his father was serving in the RAF as a rear gunner in a Wellington bomber. On a night-time raid his Wellington was hit and the rear gun turret blown away. Though somehow uninjured, Alan's father was left dangling from the aircraft. Held by one leg, he managed to endure the



flight home but knew that on landing he'd be crushed (Wellingtons landed on a rear wheel, which along with the turret had been destroyed). Dangling from the rear of the plane he'd effectively become the rear wheel! As the plane came into land, in enormous pain, he hauled himself up by his leg and survived. Like many heroes of the war, it was an experience he rarely spoke about.

At the age of twenty-three Alan left England and spent the next sixty years working as an engineer in Africa. He lost his Sunderland accent and enjoyed many adventures, but the memories of his time in Muker never faded. Soon after his return he phoned the Old School and told me about his time in the village and his hope of being able to visit.

## REETH AND DISTRICT GAZETTE LTD

To welcome Alan back to the village some of the locals, three or four of whom were pupils at Muker school when Alan was an evacuee, came to meet him. It was a pleasure to listen to their recollections of the people and the stories from the time. Afterwards I drove Alan and his friend Tracey over Buttertubs and up the dale to Keld. Alan was once again captivated by the landscape: the fells, the waterfalls, the dry-stone walls and the barns. It was clear that the place has, and always will have, a special place in his heart. After the war Alan's father applied to be the warden at the newly opened Keld Youth Hostel. If his application had succeeded perhaps Alan would have enjoyed a very different life in Upper Swaledale!

Richard Walls, The Old School, Muker

**R. & W. GIBSON & SON Ltd.**

**CERAMIC WALL  
& FLOOR TILERS**

**SHOWROOM NOW OPEN**

**Monday - Friday: 9.00am - 4.30pm**

**Saturday: 10.00am - 1.00pm**

**(or by appointment)**

**At Borough Road,  
Gallowfields Trading Estate**

**DL10 4SX**

**Tel. 01748 - 822682 (Home)**

**Tel. 01748 - 821909 (Showroom)**

**"We cover the Dales"**



## PEST CONTROL

Don't let pests become a problem, call us right away for a professional, reliable and discreet service.

- Rats / Mice
- Wasps / Insects
- Nuisance birds



☎ 07818 836527

🌐 [www.yorkshiredalespestcontrol.com](http://www.yorkshiredalespestcontrol.com)

📱 SCAN ME



## ANDY MALTON LTD – DALES GENERAL BUILDING CONTRACTOR



Dry lining/ plastering/ ceiling work

Roofing/ pointing/ guttering work

Most building repair work carried out

Free estimates - No job too small

**07837645104**

[andymalton56@gmail.com](mailto:andymalton56@gmail.com)



## REETH AND DISTRICT GAZETTE LTD

### Gazette Subscriptions

Following rises in the cost of postage, the annual subscription rates will rise from December to £30 UK, £60 Europe, £90 outside Europe. The rates will be reviewed every time the Post Office puts up its postal charges. The subscription rate is covering only the cost of posting a Gazette. The Gazette remains priceless.



### Yoga Classes



Tuesdays  
9.30-10.30 Reeth Memorial Hall  
Introductory price £5  
(regular price £7).

For details, contact Debbie  
yogadebbie@hotmail.com  
or 07707 683317



**LIBERTY**  
FABRIC

Quality fabrics for quilting, dressmaking, etc., sewing kits & accessories, plus wool/yarn.  
**Abbotstone House Collection,**  
Little Shop on the Hill, Hawes.  
☎ 07921 058803/01969 667988

### Geoff Braithwaite Property Maintenance & Painting and Decorating

Tel: 01748 886 783  
Mob: 0789 106 3546

Email:  
geoff@mukerchapel.co.uk



# JEREMY MOON

— DECORATOR & PAPERHANGER LTD —

Established 1981

Quick turnaround for holiday homes and lettings

Fully insured

Reliable and trustworthy tradesman

High class decorating at affordable prices

References available upon request

Call Jeremy for a free quotation

T: 01748 880 155

M: 07876 764 812

Email: JEREMYLMOON@BTINTERNET.COM





# REETH AND DISTRICT GAZETTE LTD



[www.swalefest.org](http://www.swalefest.org)

Winter has arrived, and we are warming our hearts with thoughts of the music and arts that will fill the Dales during Swaledale Festival 2024. We are delighted to share with you some handpicked highlights to whet your appetite and help you plan your Festival experience.

## Week 1

**The WHOOP Group** - Polish saxophone quartet

**The Jeremiahs** - Irish folk supergroup

**Ganda Boys** - compelling African fusion music

**London Tango Quintet** - a feast of Argentinian Tango

**Rich Hall** - star stand-up comedian

**Villiers String Quartet** - fine string quartet with world premiere

**The Reeth Lecture: Bob Harris and Colin Hall** - 'The Songs The Beatles Gave Away'

## Week 2

**Martin Taylor** - world renowned master of solo jazz guitar

**Will Pound and Delia Stevens** - harmonica and percussion

**Mathilde Milwidsky Trio** - Bartók, Beethoven, Ravel, Martinu and Mozart

**John Law (piano) and Jon Lloyd (saxophone): Naissance** - ambient, mesmerising, uplifting

**Emma Johnson's Orchestra of the Environment**

**Carrivick Sisters** - American bluegrass meets evocative songs based on South Devon folklore

**The Young'uns** - famous Teesside folk trio

**Richmond School Jazz Collective** - late night session of swinging jazz from talented music students

## KEY DATES

Tickets go on general sale on Monday 11 March 2024, or you can subscribe to our Festival Friends scheme to access Priority Booking, opening Monday 26 February 2024.

If you haven't already done so, now is the perfect time to take out or renew your Friends Membership, please visit

[www.swalefest.org/friends](http://www.swalefest.org/friends).



Ganda Boys - credit Max Benoist

**Friends Booking** Priority opens Monday 26 February at 09:00.

**General Booking** opens Monday 11 March 2024 at 09:00.

Interested in volunteering as a steward, driver, accommodation host or leaflet distributor? We welcome all volunteers - past, present and future! - to our Volunteer Briefing at Reeth Memorial Hall on **Wednesday 14 February 2024, 14:30 to 16:00**. Find out what the roles involve, sign up to events and have a cup of tea.

Season's greetings and best wishes for the new year, from the Swaledale Festival team!

## Bellerby Study Group

NEWS from Bellerby Study Group  
for JANUARY 2024

Meetings are on Wednesday at 7.30pm  
in the Memorial Hall, Church Street,  
Bellerby, DL8 5QL.

Talks are followed by refreshments  
and a chance to chat.

The cost for this term will be **£15** to  
join as a member for the term,  
or **£3** for a single visit. Any queries  
can be directed to Chris Akrill on  
07983 300336

January 24<sup>th</sup> Jim Morton will talk  
on his **"WALKING  
AROUND BRITAIN"**. On 12/04/2021  
he set off from Penistone and walked  
around the coast of the British  
mainland to raise money for the  
Gurkha Welfare Trust. He was gone  
537 days and walked 8895 miles. He  
wrote a book at the end.

January 31<sup>st</sup> Chris Bibby gives his  
**"REMINISCENCES OF A COACH  
DRIVER"**.

Then the following week Roger  
Burnett returns to do a **"GARDENING  
Q&A"** and as a former RHS and Britain  
in Bloom judge he will be more than  
capable of coping with all our  
questions.

Chris Akrill

**VICTORIA DESIGN GROUP LTD**  
Consulting Civil & Structural Engineers

**Consulting Structural & Civil  
Engineers**

*Structural Surveys  
All design work undertaken  
whether domestic or commercial,  
large or small*

Telephone: **01748 886717**  
Email: **office@vdg.co.uk**  
Website : **vdg.co.uk**

## Dales Reyno-Vations



### General Building & Maintenance

Property renovations / Roofing  
Kitchen fitting / Joinery  
Bathroom suites / Tiling  
Painting & Decorating  
Patios / Landscaping / Ground maintenance  
Free estimates / Insurance quotes

**No Job too small**

### D Reynoldson

11, Place Hill, Reeth, Richmond  
North Yorkshire, DL11 6SD

**01748884309 / 07792458801**

Email: **david.reeth1@outlook.com**

## The Old School Muker

Art Gallery & Craft Centre



Guning Lane, Muker, Swaledale, DL11 6QQ  
[www.theoldschoolmuker.co.uk](http://www.theoldschoolmuker.co.uk)  
Tel: 01748 886155  
email: [ask@theoldschoolmuker.co.uk](mailto:ask@theoldschoolmuker.co.uk)



**Reeth Brass Band  
2023 Christmas Concert**



**Join your Local Band in a Relaxed Friendly Atmosphere  
Varied Program Delivered with Humour**

**Reeth Memorial Hall  
7.30pm  
Tuesday 19<sup>th</sup> December**

**Refreshments & Mulled Wine  
Raffle & Donations**

**Banding:**  
Where  
All Ages  
Enjoy Playing  
All Genres

**SWALEDALE**

**'POTTING ON THE NEXT GENERATION IN THE TWO DALES'**



**PLAYGROUP**

**Find us on Facebook – Search Seedlings Reeth**

**REGISTERED CHARITY No- 1045715**

**Swaledale Seedlings playgroup**

**'Stay and Play' Sessions**

**Mondays at Gunnerside Village Hall  
& Thursdays at Reeth Memorial Hall  
9.30am until 11:25am**

**Open to all children under the age of 5**

**£2 per child per session**

**Pop into a session or message us on Facebook  
for further information**

Fremington  
 dalesbikecentre.co.uk  
 tel:01748 884908



Cafe & Cakery

**SOUPER TUESDAYS**  
 Homemade soup, bread roll,  
 slice of cake & hot drink  
 Only: £7 every Tuesday

**OPEN EVERYDAY!**

Book a Stay  
 14 beds Bunk & Breakfast

**New & Ex Hire Bike Sales**  
**Mountain/Road Bike Hire**  
**E-Bike Hire & Sales**  
**Bike Servicing**

**SHOW STOPPER**  
**FRIDAYS**

Every week a 'Showstopper' of a cake!



Visitor Centre Open Daily

**NEW! Seasonal Menus in Calvert's  
 Restaurant & our 1897 Coffee Shop**

Light bites, delicious mains, monthly  
 specials, coffee & cake with views over the  
 Dales.

**NEW! Christmas Menu available from 20th**

**Nov**

**Cheese Experience & Pairing Room**

Book online for daily demos & guided pairings

Try our **NEW Cheese Trail Quiz**

Children go Free each weekend

**Christmas at the Creamery** - Fantastic gifts

and delicious treats in our **Cheese & Gift**

**Shop**

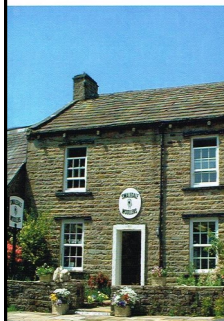
**Christmas Shopping Nights and Festive Menu**

**wensleydale.co.uk**

OPEN ALL YEAR ROUND, EVERYDAY

**SWALEDALE WOOLLENS**

MUKER-IN-SWALEDALE, RICHMOND  
 NORTH YORKSHIRE



Celebrating 40 Years

The Quality is Legendary...  
 ...The Choice is Endless.

**TAKE HOME A PIECE  
 OF THE DALES**

Call into our shop in  
**Muker Upper**  
 Swaledale and see  
 what unique  
 garments we have on  
 display from hand  
 knit cardigans,  
 sweaters, hats,  
 scarves & gloves to  
 machine knit sweaters  
 & cardigans for both  
 ladies & gents. We  
 also stock sheepskin  
 rugs, slippers &  
 gloves.

**WE ARE OPEN  
 EVERYDAY**

Tel. 01748 886251

Email: [mail@swaledalewoollens.co.uk](mailto:mail@swaledalewoollens.co.uk)  
 or visit our website where you can order online:  
[www.swaledalewoollens.co.uk](http://www.swaledalewoollens.co.uk)

# REETH AND DISTRICT GAZETTE LTD



## Bolton Castle

A position has become available at Bolton Castle nr Leyburn for a cleaner or cleaners to come and work at this stunning venue.

The castle is open to the public from 2nd March to 1st November 2024 and throughout this time the role will involve working from 4.30pm 4 days per week for 4 hours with the flexibility to do more if required. Through winter months some hours will be required due to events and also preparations for opening for the season.

Typical requirements of the role is to brush and mop floors, sweep stairs, clean the public conveniences, litter pick, cobwebbing and cleaning of furniture.

Job share option is available.

The castle has five floors and does not have a lift so a good level of fitness would be advantageous.

Previous experience is desirable but is not essential.

**Job Type:** Part-time

**Salary:** Negotiable depending on experience

**Expected hours:** 16 – 25 per week

Bolton Castle, Leyburn, North Yorkshire, DL8 4ET

T: 01969 623981 • E: info@boltoncastle.co.uk • www.boltoncastleweddings.co.uk

## Arkengarthdale Hub in St. Mary's Church



Our first Hub quiz was a resounding, sell-out success and we are delighted that £300 was raised, to be split 50/50 between the Hub and St. Mary's Church.

Thank you to everyone who supported the event and to the volunteers who cooked and served the delicious supper, prepared and read out questions - a great team effort by everyone involved.

To get into the festive mood, you are invited to create a felt bauble on 1 December with Cath Monks and pop in to our Christmas coffee morning on Friday 8 December from 10.30.



Serving food between 12pm & 8pm everyday

Free to join loyalty scheme

**No Table Reservations**

Amazon, BT Sports & Sky Sports on 3 TV's

Pool Table & Dart Board

Pet Friendly

Monthly Quiz

Occasional Live Music

Warm Welcome

Cask Marque accredited & CAMRA discount

[www.thebuckreeth.co.uk](http://www.thebuckreeth.co.uk)

Tel 01748 884 545

Email [stay@thebuckreeth.co.uk](mailto:stay@thebuckreeth.co.uk)

### The Swale Singers

Present

### A Winter Celebration



**Saturday December 9th at 7pm**

**Reeth Memorial Hall**

Music including Vivaldi's Magnificat and Jonathan Willcocks' On This Day Rejoice  
Wine and Mince pies available in the interval

**Tickets £10 from Reeth Post Office,  
[Wegotickets.com](http://Wegotickets.com) or on the door**

WeGotTickets



Swale Singers



*The Low Row Institute's  
Christmas Domino &  
Whist Drive!*

*Friday, 15<sup>th</sup> December 7.30pm*

*Come along for a bit of Festive  
fun, meet up with friends old and  
new plus a festive supper!*

*See you there!*



**FREE**  
Professional  
Spot & Stain  
Remover

Carpet Cleaning  
Rug Cleaning  
Upholstery Cleaning  
Mattress Cleaning

*Proudly serving The Dales  
Since 2014*

Leyburn - 01969 622620  
Mobile - 07944 774947

[www.ecodyrcarpetcare.co.uk](http://www.ecodyrcarpetcare.co.uk)



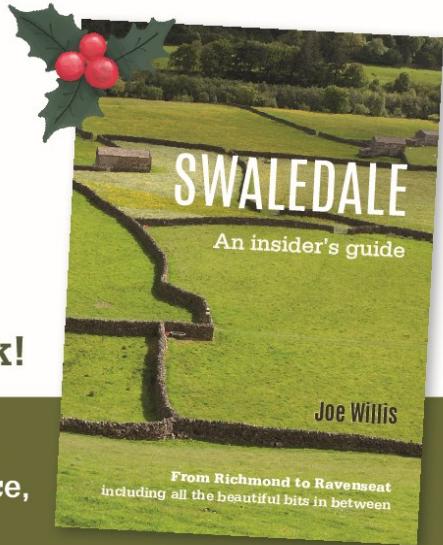
## THE ARKENGARThDALE BUNGALOW TRUST

The Bungalow, Arkengarthdale, has been jointly owned by nine families since 1965. It has five rooms (one en-suite), shower room, outside suite and store on three levels overlooking the beck. It can comfortably accommodate up to eight people for holidays and walking.

One family wishes to retire due to ill-health and the Trust welcomes enquiries from people wishing to join.

Full information on the Bungalow facilities, how the Trust works and a visit can be obtained from  
[francis.morgan73@hotmail.co.uk](mailto:francis.morgan73@hotmail.co.uk)  
and [helenspost@hotmail.co.uk](mailto:helenspost@hotmail.co.uk).

**This Christmas,  
treat everyone on  
your gift list, who  
likes to read or look  
at pretty photos,  
to a copy of this  
wonderful new book!**



**Available now from Reeth  
Gift Shop, Reeth Post Office,  
The National Park Visitor  
Centre, Dales Bike Centre, Swaledale  
Woollens and Keld Resource Centre**

**£5.99**

### **Fremington Village Hall**

Redecorated and now with it's own piano, the Village Hall (known locally as the Sunday School) is available to hire for all kinds of events, from regular classes, talks and community activities, to one-off functions like children's parties, lunches and dinners and special occasions such as wedding receptions and anniversary parties. The Hall has a small kitchen with electric cooker and microwave; toilet facilities including disabled toilet; and a small rear garden.

The Hall is a registered charity run by a small and dedicated volunteer committee. You can book the Hall by phoning or texting the bookings secretary **Alison Tupman** on **07967 839494** or by email at **fremingtonvillagehall@outlook.com**

### **NORTHERN WALLS**

#### **DRYSTONE WALLING & LANDSCAPING**

Former National Trust  
gardener with 20 years  
experience

City and Guild Certificate in  
Horticulture

**[www.northernwalls.com](http://www.northernwalls.com)**

**Tel 0795 148 1239**

## What was your best read in 2023?

Is there a book that really stands out which you read this year? Or will you have to rack your brains to remember **what** you read in 2023, let alone which you thought was the best?

Time to get your thinking caps on, stir up the old grey cells and share your best read with others, so that they can enjoy it too.

Either pop into the library in Hudson House\* and add your top pick to the sheet next to the borrowing log, or **email me and let me know**. You don't have to reveal your identity to the world at large if you don't wish to, so feel free to stay incognito if you prefer.

The deadline is 5<sup>th</sup> January 2024 and we'll include some of your favourites in the February Gazette. And if we get lots of responses, we'll put more in over the coming months. If you're moved to write a short review, or say why you enjoyed your choice so much, just email it to me and we'll try to include that too.

\* **The library** is open whenever Hudson House is open, usually 10.30am to 3.30pm Monday to Friday and 10.30am to 1.30pm on Saturdays in the winter months. It's self-service, so just choose your books, date stamp them, so you know when they're due back, and write the details in the borrowing log, so we know who has got what.

We have over 1,000 books and every three months or so we refresh a quarter of the stock, so regularly there are new titles to choose from.

[elizabeth@bedfords.me.uk](mailto:elizabeth@bedfords.me.uk)



Cat Hole Cottages

*Beauty and tranquillity.*

*Quality and care.*

Cat Hole Cottages | Cat Hole House | Thwaite  
Richmond | North Yorkshire | DL11 6DR  
Tel: 01748 886366

Discover our treasury of gorgeous cottages in Swaledale and Arkengarthdale.

Well-equipped, stylish and individual, our cottages offer guests a wonderful holiday in the midst of superb scenery!

**To find your perfect cottage call Judith on 01748 886366**

[www.catholecottages.com](http://www.catholecottages.com)



R.A. Lofthouse  
Roofing Services  
Kirkby Stephen

We SPECIALISE in traditional and modern slating and tiling

- Traditional slate specialist
  - Re Roof / Repair work
  - Slating, flagging & tiling
    - Lead work
- Velux replacement / installation
- Chimney repair/replacement

For a FREE quotation or any enquires please call:

Tel: 017683 48787

Mob: 07557738016

or email us on:

[r.a.lofthouse@outlook.com](mailto:r.a.lofthouse@outlook.com)



# REETH AND DISTRICT GAZETTE LTD



**nh** flooring

**The Carpet  
& Flooring  
Specialist**

- Carpets • Wood Flooring • Laminates
- Vinyl Tiles • Vinyl Sheets • Rugs • Accessories

- Amtico
- Karndean
- Panaget
- Brintons
- Westex
- & more



Contact us now for a **FREE** quote, advice or more information

t: 01748 822834 m: 07789 996526

e: [enquiries@nhflooring.co.uk](mailto:enquiries@nhflooring.co.uk)

w: [www.nhflooring.co.uk](http://www.nhflooring.co.uk)

Unit 6 Borough Court, Borough Road, Gallowfields Trading Estate, Richmond. DL10 4SX

@nhflooring

@nh\_flooring

@NH\_Flooring



THE STATION

**Singers**

aiding  
Richmondshire Refugee Support Group  
present

## Carolling Around Europe

Saturday December 9th 2023  
at 6.30pm

(Doors open 6pm)  
St Mary's Church, Richmond



Tickets £10 | On the door £11  
Accompanied under 18s free

Please bring cash for raffle  
and bucket collection

Tickets available from  
[www.ticketsource.co.uk/the-station-singers](http://www.ticketsource.co.uk/the-station-singers)  
Scan the QR code  
[www.richmondstationsingers.co.uk](http://www.richmondstationsingers.co.uk)

For more information or help phone 07773 424744  
Ask Choir members or Richmondshire Refugee Support Group  
[rrsg773@gmail.com](mailto:rrsg773@gmail.com)



# Clarksons

MORE THAN ACCOUNTANTS

**Are you looking for more from your accountant?**

We believe businesses deserve more than just having their accounts and tax returns filed.

Whatever your accounting or business needs, we offer a personalised service to ensure we assist you in fulfilling your business's potential.

w: [www.clarksonsaccountants.co.uk](http://www.clarksonsaccountants.co.uk) e: [info@clarksonsaccountants.co.uk](mailto:info@clarksonsaccountants.co.uk) t: 01969 624999  
Thornborough Hall, Leyburn, North Yorkshire, DL8 5AB

Follow Us on Twitter @ClarksonsAcct

Find Us on Facebook @ClarksonsAcct

## *The Black Bull*

**Reeth's Oldest Inn, serving a range of Real Ales**

Comfortable en-suite  
accommodation,  
Traditional Pub Fayre served daily  
Sunday Carvery (booking advised),  
Coaches welcome

Tel: 01748 884 213,  
Email: [bookings@theblackbullreeth.co.uk](mailto:bookings@theblackbullreeth.co.uk),  
Black Bull, Reeth, DL11 6SZ,  
[www.theblackbullreeth.co.uk](http://www.theblackbullreeth.co.uk)



**Open Daily from 11am**

# REETH AND DISTRICT GAZETTE LTD

## Kings Head, Gunnerside

Our community owned pub started an exciting new chapter in its history this November.

We are delighted to welcome Glyn and Lorraine Mallinson, experienced publicans from Nidderdale, and their family, to the village as they take over as new tenants at The Kings Head. They are excited to be moving into Swaledale and look forward to building on the superb success of Stephen Gregson and his team.

While we are sad to say farewell to Stephen and Sarah, we thank them for their tremendous efforts during the last 3 years and wish them every good fortune in their future endeavours.

Gunnerside CBS

Imogen Hartley  
Qualified MAKEUP ARTIST  
(MUA Diploma)

- Bridal
- Any special occasion

07947 210904

Instagram

@thefacetobe

www.thefacetobe.co.uk



## Wensleydale Tree & Horticulture Services (Est. 1995)



David Allen (HND Arboriculture)  
Fully Insured (£5 million)  
Professional tree work: felling, crownthinning etc. to BS3998

Tel 01969 667364 Mobile: 07811 576108

E-Mail: treesinhawes@gmail.com

www.treesinwensleydale.com

## R.L.G. Property Services

- Paving • Groundworks • Decorating
- Pressure Washing • Garden Maintenance
- General Repairs & Improvements 

0737 607 3816  
01748 884 321

Email: Ryang2190@gmail.com



Bespoke  
Tutors

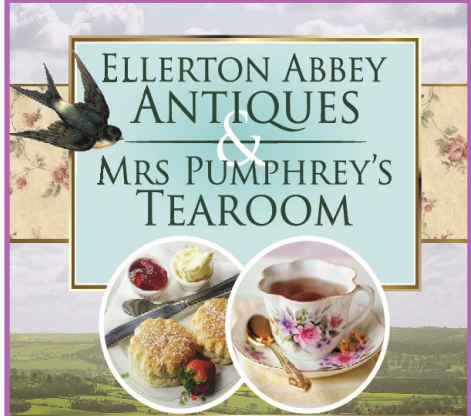
## Maths, Science, English Private Tutors

Gaynor Voice & Kate

Brown Hill Top  
Low Row  
Richmond  
DL11 6NB

Tel. 01748 886201

Email: bespocketutors@gmail.com  
www.bespocketutors.org.uk



Open Thursday, Friday and Saturday 10 - 4

Ellerton Abbey, Richmond,  
North Yorkshire DL11 6AN

Tel: 01748 884321  
Mobile: 07948 426099

Find us on

facebook



# REETH AND DISTRICT GAZETTE LTD

## Reeth Memorial Hall

Thank you to everyone who has helped support the Memorial Hall over the last year by attending our concerts. This is our main source of funding and helps with the maintenance and upkeep of the hall.

Our last show of the year will feature winter songs, folk carols and wassails.

**Friday 01<sup>st</sup> December - The Wilderness Yet - Tickets £16 (£18 door).**

A full programme of concerts is already booked in for 2024.

**We start with the Urban Folk Quartet in March - expect a groove-filled set of acoustic music, presented with infectious energy and humour.**

Kiki Dee and John Tams will both be making welcome returns in 2024.

**Please see website for further details of all concerts already programmed for next year.**

Have you considered buying tickets for next years concerts as Christmas presents?

Tickets from Reeth PO or phone Glen Steward (01748 884989) or visit [www.reethmemorialhall.co.uk](http://www.reethmemorialhall.co.uk) - tickets

$\frac{1}{2}$  price u16s. All concerts 8pm unless otherwise stated.



**YOUR LOCAL TRADITIONAL**  
**CHIMNEY SWEEP**  
NACS & HETAS qualified & registered

**We set ourselves very high standards and take every care in your home**

**We offer a comprehensive service**

All types of chimneys swept to relevant BS Std.  
Bird guards & cowls, etc. supplied & fitted  
Advice freely given, problems solved  
Carbon monoxide detectors  
Chimney pots replaced

**01765 688078**  
**www.sweepinthedales.co.uk**

Stove Refurbishment  
Stove servicing and repair  
Solid fuel stove installations  
Stainless steel flexible linings  
Stainless steel rigid flue systems  
Only high quality components are used

**HETAS qualified & registered installer**  
**STOVE INSTALLATION**

## CALVERT & JENKINSON LTD

— Building Contractor —

All Aspects of building work carried out from renovation to new builds, plastering to roofing.

[www.cjbuildersltd.co.uk](http://www.cjbuildersltd.co.uk)

[cjbuildersltd@gmail.com](mailto:cjbuildersltd@gmail.com)

Andrew: 07837955869

Ryan: 07968463840

THE HEALING COLLECTIVE

Encouraging health and well being with a range of therapies including  
\* Reiki \* Counselling \* Bach Remedies \*  
\* EFT (tapping) \* Indian Head Massage \*  
*Treatments for animals also available.*

Coach House, Berry's Farm Shop & Café,  
Swinithwaite, DL8 4UH. t.0845 474 2383

info@healingcollective.co.uk  
www.healingcollective.co.uk



Visitor Centre Open Daily

NEW! Seasonal Menus in Calvert's  
Restaurant & our 1897 Coffee Shop

Light bites, delicious mains, monthly  
specials, coffee & cake with views over the  
Dales.

NEW! Christmas Menu available from 20th  
Nov

**Cheese Experience & Pairing Room**

Book online for daily demos & guided pairings

Try our **NEW Cheese Trail Quiz**

Children go Free each weekend

**Christmas at the Creamery** - Fantastic gifts  
and delicious treats in our **Cheese & Gift**

**Shop**

Christmas Shopping Nights and Festive Menu

[wensleydale.co.uk](http://wensleydale.co.uk)



Home Run

*Pet sitting, House sitting, Dog walking*

I offer a friendly, personalised pet and house  
sitting service in and around Swaledale.

Nicola – 07866 336924

nicola@homerundogsitting.co.uk

www.homerundogsitting.co.uk



Yorkshire Dales Accountancy  
Chartered Accountants

taxation & business advisors

Providing a broad range of accountancy and taxation services  
across a variety of sectors, including:

- Accounts • Business Tax • Personal Tax • VAT • Payroll
- Construction Industry Scheme • Capital Gains Tax
- Inheritance Tax • Making Tax Digital



Hawes - Leyburn

2 Chapel Street, Hawes  
North Yorkshire, DL8 3QG

E: [info@yorkshiredalesaccountancy.co.uk](mailto:info@yorkshiredalesaccountancy.co.uk)

T: 01969 678128

[www.yorkshiredalesaccountancy.co.uk](http://www.yorkshiredalesaccountancy.co.uk)

## Low Row Institute Hosts Prime Minister!



building can host the first ever visit of a serving British Prime Minister. Soon, management teams from Northallerton & Westminster were in touch, as were the Police and Protection Teams. They all had to be satisfied before the visit could take place, and all in the middle of a building site as well! Risk assessment and method statements agreed, the visit was on, until the tragedy in Israel struck and his arrival was postponed for a week. However, Friday 27<sup>th</sup>

When we wrote to his office asking if he would be so kind as to write a letter supporting our renovation grant applications, little did we know what was to follow! "He would be delighted to support your renovation project", came the reply. "In fact, he'd like to visit you, meet the people involved and see what it's all about." Well that truly caught us on the hop! "But we've only got half a roof at the moment, and the building is covered in scaffolding" we tried to point out. "Excellent, he wants to see it warts and all!" came the response! Now it is quite a daunting thing organising the visit of a Prime Minister, though it is a proud moment in the Institute's history when the



## REETH AND DISTRICT GAZETTE LTD



The Melbecks Emergency Volunteer Group, Communities for Yorkshire, The Parish Council, Rural Arts, District Council, Northern Powergrid, Institute committee & trustees, parishioners, they were all there to have their moment to discuss their issues and concerns with the PM. And to be fair to him, he took the time to talk to everyone. Our one regret was that we would have liked to have had more of our less able-bodied

October duly arrived and so did our Prime Minister. He didn't want fanfare or introduction after entering the hall, he just wanted to dive in and meet people, and he was as good as his word. Over 70 people of all ages were more than happy to chat to him about a variety of topics and residents young and old were represented. School children, Community First Responders,

residents attending, but due to the proximity of the scaffolding on the approach ramp, this sadly wasn't possible. A point of note is that Rishi Sunak is no stranger to the Low Row Institute. He came along to launch the Low Row Community First Responders group a few years ago, and the CFRs are a group (amongst others) in which he takes a keen interest. Feedback



from the event was extremely positive from all who attended, and his visit has certainly helped publicise what we are trying to do at the Low Row Institute.

**Low Row  
Institute  
Committee.**

# REETH AND DISTRICT GAZETTE LTD

## Church Opening Times and Services in December

|                                 |          |   |                                    |
|---------------------------------|----------|---|------------------------------------|
| <b>3<sup>rd</sup><br/>Dec.</b>  | 9.15 am  | St. Mary's Muker  | <i>Eucharist</i>                   |
|                                 | 10.30 am | St Joseph & St Francis Xavier<br>Richmond   | <i>Mass</i>                        |
|                                 | 10.30 am | Low Row URC   |                                    |
|                                 | 11.00 am | St. Edmund's, Marske  | <i>Holy Communion</i>              |
|                                 | 11.00 am | Holy Trinity Low Row  | <i>Eucharist</i>                   |
|                                 | 11.00 am | Reeth Evangelical Congregational  |                                    |
|                                 | 3.30 pm  | Reeth Evangelical Congregational  |                                    |
|                                 | 4.00 pm  | <i>St. Andrew's Grinton—informal<br/>Carol Service with a Christmas<br/>jumper parade and a collection<br/>for Christian Aid.</i> | <i>'Come &amp; Sing Carols'</i>    |
| <b>10<sup>th</sup><br/>Dec.</b> | 9.30 am  | St. Andrew's Grinton  | <i>Eucharist</i>                   |
|                                 | 10.30 am | St Joseph & St Francis Xavier<br>Richmond   | <i>Mass</i>                        |
|                                 | 11.00 am | Reeth Evangelical Congregational  |                                    |
|                                 | 11.00 am | St. Edmund's, Marske  | <i>Morning Prayer</i>              |
|                                 | 11.15 am | St. Mary's Arkengarthdale   | <i>Holy Communion BCP</i>          |
|                                 | 3.00 pm  | St Michael's Downholme  | <i>Lessons/Carols</i>              |
|                                 | 3.30 pm  | Reeth Evangelical Congregational  |                                    |
| <b>17<sup>th</sup><br/>Dec.</b> | 9.15 am  | St. Mary's Muker  | <b>Eucharist</b>                   |
|                                 | 10.30 am | St Joseph & St Francis Xavier<br>Richmond   | <i>Mass</i>                        |
|                                 | 11.00 am | Holy Trinity Low Row URC  | <i>Village Carol Service</i>       |
|                                 | 11.00 am | Reeth Evangelical Congregational  |                                    |
|                                 | 2.00 pm  | Keld URC  | <i>Carol Service</i>               |
|                                 | 2.30 pm  | St. Edmund's, Marske  | <i>Carols and Crib<br/>service</i> |
|                                 | 6.30 pm  | St. Mary's Arkengarthdale   | <i>Carol Service</i>               |
|                                 | 6.30 pm  | Reeth Evangelical Congregational  |                                    |
|                                 | 8.00 pm  | Reeth Green with Reeth Band   | <i>Carols round the<br/>tree</i>   |

### **Religious Society of Friends (Quakers)**

Quaker House, 7 Grove Square, Leyburn every Sunday at 10.30 am  
The Scout Hut, Quakers Lane, Richmond 2<sup>nd</sup> and 4<sup>th</sup> Sundays at 10.30am  
[www.dalesquakers.org.uk](http://www.dalesquakers.org.uk)



# REETH AND DISTRICT GAZETTE LTD

## Church Opening Times and Services in December

|                                 |          |                                  |   |
|---------------------------------|----------|----------------------------------|---|
| <b>20<sup>th</sup><br/>Dec.</b> | 7.00 pm  | Reeth Evangelical Congregational | <i>Carols by Candlelight</i>                |
| <b>22<sup>nd</sup><br/>Dec.</b> | 1.30 pm  | St. Andrew's Grinton             | <i>School Christingle Service</i>           |
| <b>24<sup>th</sup><br/>Dec</b>  | 11.00 am | Reeth Evangelical Congregational |   |
|                                 | 11.00 am | St. Edmund's Marske              | <i>Morning Prayer</i>                       |
|                                 | 3.00 pm  | Outside the Punch Bowl Inn       | <i>Carol Singing</i>                        |
|                                 | 6.30 pm  | Reeth Evangelical Congregational | <i>Informal Carol Service</i>               |
|                                 | 10.00 pm | St. Mary's Arkengarthdale        | <i>Holy Communion BCP</i>                   |
|                                 | 11.30 pm | St. Andrew's Grinton             | <i>Christmas Eucharist</i>                  |
|                                 | 11.30 pm | St. Michael's Downholme          | <i>Midnight Mass</i>                        |
|                                 |          |                                  |   |
| <b>25<sup>th</sup><br/>Dec</b>  | 9.15 am  | St. Mary's Muker                 | <i>Christmas Eucharist</i>                  |
|                                 | 9.30 am  | Low Row URC                      |   |
|                                 | 11.00 am | Reeth Evangelical Congregational | <i>Christmas Day Service</i>                |
|                                 | 11.00 am | Holy Trinity Low Row             | <i>Christmas Day Service</i>                |
| <b>27<sup>th</sup><br/>Dec</b>  | 6.30 pm  | St. Mary's Muker                 | <i>Carol Service with Muker Silver Band</i> |
| <b>31<sup>st</sup><br/>Dec</b>  | 10.30 am | Fremington Village Hall          | <i>Parish Eucharist for New Year</i>        |
|                                 | 11.00 am | Reeth Evangelical Congregational |   |
|                                 | 3.30 pm  | Reeth Evangelical Congregational |   |

**Church of England:** Reverend Canon Caroline Hewlett  
 Vicar of the Parish of Swaledale with Arkengarthdale  
 01748 884 706      carolinejhewlett19@gmail.com

**United Reformed Church**  
 G Edward Brown 01748 886 181  
 edwardbrown@f2s.com  
 And Sue Alderson 01748 886292  
 Susana@swaledale.org

**Methodist**  
 Reverend Julie Reid  
 Minister for the Two Dales  
 01748 823 149  
 Rev.julia.reid@gmail.com

**Reeth Evangelical Congregational Church**  
 The Revd David Levell  
 07582 575 815  
 www.reethecc.co.uk

**Roman Catholic**  
 Fr John Bane  
 01748 822 175  
 www.stjosephsfx.co.uk

### Feedback sought on new plans for Coast to Coast Trail

Do you live or work in or near Reeth? Local people are invited to take part in a consultation on plans to develop a National Trail that passes through the region.

Wainwright's Coast to Coast route passes through the Lake District, North York Moors, and Yorkshire Dales National Parks. Beloved by walkers for decades, the 197-mile route was given National Trail status in 2022.

There are 17 designated National Trails in England and Wales, which are long-distant footpaths and bridleways that take in some of the UK's most stunning landscapes.

The Coast to Coast path was first developed by outdoors enthusiast and writer Alfred Wainwright in 1973, but until 2022, the path was unofficial and did not have signposts or other infrastructure. It is set to officially open as a National Trail in 2025, with £5.6 million invested to make improvements. This will include making the path more accessible to people of different abilities, the inclusion of circular routes for those wanting shorter walks, and high-quality signage and path surfaces for the length of the trail.

Kendal-based charity the Lake District Foundation, together

with Natural England, is leading a consultation aimed at maximising benefits of the path for local communities. The aim is for the trail to be an asset to people who live and work nearby, with local perspectives sought to help shape its development.

The consultation is hoping to hear from residents, community groups, business owners, land managers and farmers.

Liv Allport, Programme Manager at the Lake District Foundation said: "We're calling on the people of the Reeth area to get involved and suggest how the development of this National Trail can benefit your area. You are experts on your local area, and we would love to hear from you. Other National Trails have positively impacted towns and villages around the path with increased tourism and other economic benefits. What can this National Trail do for your region?"

To take part in the consultation go to [www.lakedistrictfoundation.org/national-trails](http://www.lakedistrictfoundation.org/national-trails) or contact Research Coordinator Emily Hicks on [emily.hicks@lakedistrictfoundation.org](mailto:emily.hicks@lakedistrictfoundation.org)





**SALES - LETTINGS - MANAGEMENT**  
**FREE 'NO OBLIGATION' MARKET APPRAISAL AVAILABLE**  
**UPON REQUEST**

6 Bridge Street  
Bedale  
DL8 2AD  
01677 422282

bedale@  
normanfbrown.co.uk

14 Queens Road  
Richmond  
DL10 4AG  
01748  
822473/822967

richmond@  
normanfbrown.co.uk

25 Market Place  
Leyburn  
DL8 5AS  
01969 622194

leyburn@  
normanfbrown.co.uk

**www.normanfbrown.co.uk**



**NEW CAR?**

We probably can - most makes.

**USED CAR?**

We surely can - thousands to choose  
from

**LCV / DOUBLE CAB?**

Of course we can - new or used.

**FINANCE?**

We certainly can.

PCP Contract Hire

Lease Purchase Hire Purchase

Part exchange welcome.

Jed Collins, Bridge Garage, Reeth

01748 - 884245

Service MOT Parts Tyres Bodywork

**NYCC HOME LIBRARY  
DELIVERY SERVICE**

**We deliver books, audiobooks,  
DVDs and information to the  
homes of people who find it  
difficult to get to their local  
library.**

**If you are interested in  
receiving monthly deliveries  
please contact**

**North Yorkshire Libraries  
Headquarters on  
01609 533800**

**Or Catterick Garrison Library  
on 01609 534595**



## Sustainable Swaledale

### North Yorkshire Council Community Awards 2023: Caring for the Environment winner

Sustainable Swaledale volunteers are honoured to have **won the North Yorkshire Council Community Awards 2023 Caring for the Environment Award** for the work done for four projects: a tree-planting project that has expanded to include a tree nursery and woodland monitoring; a swift, swallows and martins project erecting bird boxes and collecting population data; a meadow and wildflower restoration project and a fourth project addressing local food growing and sharing.

Congratulations to Richmond School Eco Club which was runner up for the Environment award and to Reeth and District Community Transport which was runner up for the best community group award. Coverage at: <https://tinyurl.com/3v9rvbbu>  
<https://tinyurl.com/yc7ddt4v>



Naomi, Rachel and Olivia receiving the award with Cllr David Ireton.

### North Yorkshire Council Consultation: Let's talk Money

North Yorkshire Council is seeking views on its budget priorities for 2024/2025 in its Let's Talk Money survey. Views can be submitted online by 18 December at:

<https://letstalkny.commonplace.is/>

Results of the Let's talk climate change consultation earlier in the year can be found at:

<https://tinyurl.com/363kww6c>

### Recycling medicine blister packs

Aldi are trialling a **medicine blister pack recycling scheme**. You register with Terracycle and Aldi meets the cost of you sending up to two envelopes each month containing a maximum of 30 empty blister packs per envelope. More information available at:

<https://tinyurl.com/25d4nu3y>

### Shop local for Christmas

Reduce your environmental impact and support all the local shops, businesses and artists this year with your Christmas shopping.

### Tree planting season 2023/2024

Sustainable Swaledale will be starting its third **community tree planting season** late November with tasks before and after Christmas through to March 2024. There will be a mixture of tasks involving planting woodland and hedges across eight Swaledale and Arkengarthdale sites and also removing

# REETH AND DISTRICT GAZETTE LTD

redundant tree guards. If you would like to get involved, contact us and we can add you to our volunteering email list. We are grateful to Tees-Swale: naturally connected for funding the planting.

Wishing you all a Merry Christmas and a Happy New Year!

Find out more and join in

**Meeting:** first Thursday of the month at 7pm. Please contact us for venue details.

**Email:** [info@sustainableswaledale.org](mailto:info@sustainableswaledale.org)

**Phone:** the Secretary on 01748 886 381

**Facebook Group:**

Sustainable Swaledale

**Website:**

[www.sustainableswaledale.org](http://www.sustainableswaledale.org) where you can sign up to our free newsletters, and choose to support us as a member for £10 (£5 concessions) per year.

**Margaret**



2024 Calendars  
Now Available  
online at  
[www.scenicview.co.uk](http://www.scenicview.co.uk)  
or from our gallery in  
Reeth.

Calendar  
2024  
Photography by Scenicview Gallery

Scenicview Gallery  
Silver Street, Reeth, DL11 6SP

## STURDY TRAVEL

INDEPENDENT TRAVEL SPECIALISTS

Now at 1 Golden Lion Yard  
Market Place, Leyburn DL8 5AS

For all your travel needs, home and abroad

Call: 01677 422826

Email: [robert@bakewelltravel.co.uk](mailto:robert@bakewelltravel.co.uk)

 Part of Bakewell Travel 


## Hillways, Gunnerside

Holiday Let - 2 bed - sleeps 4

Tel 07543 630202

[stamosauruscraft@gmail.com](mailto:stamosauruscraft@gmail.com)



## 3D Cross-Stitch



### The Nutmeg Gallery

Dozens of models on display together with kits, accessories and the full range of DMC stranded cotton. Normally open Mon-Fri, and Saturday afternoon.

Reeth Dales Centre, Off Silver Street,  
Reeth, DL11 6SP, 01748 884926



[www.3dcrossstitch.co.uk](http://www.3dcrossstitch.co.uk)

# BARTLETT ELECTRICALS

APPLIANCE REPAIRS AND SALES

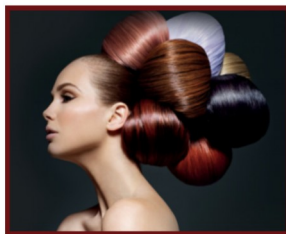
- All Major manufacturers repaired and supplied.
- Domestic and Commercial repairs undertaken
- Spare part sales
- Bespoke installations
- PAT testing
- Electrical work undertaken
- Service , Spares and Repairs

Covering all of Wensleydale and Swaledale

Book online : [www.bartlettelectricals.co.uk](http://www.bartlettelectricals.co.uk)

Email: [ben@bartlettelectricals.co.uk](mailto:ben@bartlettelectricals.co.uk)

Mobile/wa business : 07920 401042



## Sarah Louise Olney

Mobile Hairdressing

Facials

Massage

Reflexology

Indian Head Massage

Cruelty free products

Cruelty free hair colour

Reeth 07875 926946



## LOW LANE CHRISTMAS TREES



Low Lane Middleham Road,  
Leyburn.

Locally grown Christmas trees, ornamental wreaths and tree stands. Plantation open from 10.00 - 4.00 weekdays, 9.00-5.00 weekends, Saturday 25th November to Christmas Eve.

As well as an extensive selection of Norway Spruce and Nordmann Fir pre-cut trees you can also choose your own tree from the plantation and we will cut it fresh for you.

Contact Mike tel 01969 625594, mob 07775 422043.  
email [lowlanetrees@hotmail.co.uk](mailto:lowlanetrees@hotmail.co.uk)

## 'JAZZ and COCKTAILS' at the Station

Local jazz musicians John and Jane Hunter and Adam Bradley are presenting the first 'Jazz' night of 2024 at The Station, Richmond on Saturday 27<sup>th</sup> January, and will be joined by special guest vocalist Natasha Harper from Brighouse. The 'Good Vibes' trio are well known in the region after several performances at Richmond Station in addition to further appearances including Hurworth and Grinton.

The band was formed from the 'pit' ensemble at the Georgian Theatre when John was acting as Musical Director for a number of productions, and were first heard as a trio accompanying John and Jane's

Richmond 950 production 'The Station Master' in collaboration with the Charlotte Jaqueline Dancing school. "It's lovely to be back at the Station" John said "...it's a great venue, and this time our special guest is a vocalist I've worked with for a couple of decades. Natasha recently appeared on

ITV's 'Starstruck' singing as Judy Garland, and we are currently developing a production featuring all of her popular songs. We hope that this show may 'tour' North Yorkshire next year - but there will be a sneak preview of a few of the songs at the Station in original arrangements I have written for Natasha, who is known both nationally and abroad as a professional '1940's' performer. More recently she has performed tribute acts as Lulu and Amy Winehouse - but she has an amazing voice for the 'standards'".

Tickets for the January Jazz & Cocktails night are £25 per person, which in addition to the live jazz, include a delicious two-course meal (drinks purchased separately). Call 01748 825967 or [reservations@thestation.co.uk](mailto:reservations@thestation.co.uk).



# REETH AND DISTRICT GAZETTE LTD



**SWALEDALE  
MOUNTAIN  
RESCUE  
TEAM**



**Incidents Oct 9th to 5<sup>th</sup> Nov  
2 Incidents this edition**

**In an emergency DIAL 999 ask for  
the POLICE then  
Mountain Rescue / Cave Rescue /  
Mine Rescue / Flood Rescue**

Charity Commission Registration No:  
1201870, providing Mountain and Cave  
Rescue in the Northern Yorkshire  
Dales

The team is made up of highly trained  
volunteers available, 24/7 in any  
weather, any time  
**On average we respond to between  
40 to 50 calls each year.**

**Incident 43: 04/11/2023:** Called  
just after midnight to locate a dog  
walker near Leighton Reservoir who  
had become misplaced. Quickly located  
by the team and returned to  
civilization.

**Incident 42: 23/10/2023:** Called to  
rescue a well-equipped, injured walker  
near the Pennine Way on Kisdon Fell.  
Treated and evacuated by the team to  
the waiting Ambulance in Muker.

A merry Christmas and happy New  
Year from us all at Swaledale Mountain  
Rescue Team

**Swaledale MRT**







**TALL TREES LANDSCAPES**

Garden Design - Hard Landscaping  
Tree Surgery- Soft landscaping  
and Garden Maintenance.

Please have a look at our website, email or  
phone us for a full range of services.

talltreeslandscapes.co.uk  
talltreeslandscapes@hotmail.com  
07929322227



**VANESSA HUNTER**  
LRAM, LTCL, IPA  
(Cert)

**SPEECH, DRAMA and PUBLIC  
SPEAKING**

Build confidence and improve  
interview technique.

Students accepted from the age of  
five through to adults of any age.

Examinations can be taken if wished  
with either RADA or London College  
of Music and Media.

Higher grade examinations qualify for  
University points.

J. N. & E.  
*Capstick*  
INSURANCE CONSULTANTS LIMITED



**WINNER**  
CIR COMMERCIAL  
INSURANCE  
AWARDS 2017  
BROKER CLAIMS TEAM  
OF THE YEAR

*Specialising in farm,  
home and motor  
insurance*

*A local company, small enough to care, big enough to compete. So give us a try.*

|   |   |   |
|---|---|---|
| 36 Main Street,<br>Sedburgh<br>LA10 5BP<br>Tel: 015396 20124<br>Fax: 015396 20791 | Market Square,<br>Kirby Stephen<br>CA17 4QT<br>Tel: 017683 72285<br>Fax: 017683 72346 | Hawes Auction Mart<br>Birtersett Road, Hawes<br>North Yorkshire DL8 3NP<br>Tel: 07498 041 187<br><i>Open during auction hours</i> |
|---|---|---|

[www.capstickinsurance.co.uk](http://www.capstickinsurance.co.uk)

J.N. & E. Capstick Insurance Consultants Limited is authorised and  
regulated by the Financial Conduct Authority

**CHARMING OLD COTTAGE IN THE  
CENTRE OF REETH (sleeps 6+)**  
Open fire & background heating.  
Fully fitted kitchen, dishwasher, fridge/  
freezer.

2 bathrooms, 2 double bedrooms, 1 twin bed-  
room & attic play area/fourth bedroom with 3  
single beds.

Private, secure, rear courtyard area.  
Dogs welcome.

Contact Denyse on 01325 722786 or  
e-mail [denyse00@btinternet.com](mailto:denyse00@btinternet.com)  
[www.holidaycottageswaledale.com](http://www.holidaycottageswaledale.com)

**D. J. OLNEY**  
Painter & Decorator  
*Interior & Exterior*  
Call  
01748 825472 or  
07801 026 006



All digital talks can now be booked via the online ticketing platform, Eventbrite. The Zoom link for the talk will be sent out via email in the usual way a few days prior to the scheduled talk. Both talks can be booked via our Events page:

<https://friendsofthedales.org.uk/events> Or via: [www.eventbrite.com/cc/friends-of-the-dale-autumn-winter-talk-programme-2567229](http://www.eventbrite.com/cc/friends-of-the-dale-autumn-winter-talk-programme-2567229)

### **Online Talk: Funding for Sustainable Business & Community Projects in the Dales**

**Wednesday 6 December, - slightly later time of 5.00pm**

This talk is pitched at businesses, community groups and individuals wanting to find out more about how the Yorkshire Dales National Park's Sustainable Development Fund can support projects that aim to promote a more sustainable way of living in, working in or visiting the National Park. Meet Andrea Burden, Sustainable Development Officer for the Park who will introduce the scheme, the funding available and how to apply. Edward Sexton of Clapham based Glencroft will then reveal how the fund helped kick-start his company's now successful 'farm to

yarn' project - Clapdale Wool - buying fleeces from farms within a 5-mile radius and transforming them into Yorkshire-made hand-knit yarn.

### **Online Talk: Access the Dales Wednesday 17 January, 4.30pm**

Since becoming a wheelchair user in 2011, Debbie North has campaigned tirelessly to break down barriers and promote countryside accessibility for all. Founding the charity, Access the Dales, whose motto is 'making the inaccessible accessible', there are now nine 'free to borrow' all terrain wheelchairs available from designated sites across the Dales. Debbie was also appointed Cabinet Office Disability and Access ambassador for the Countryside in 2022. This talk offers a unique opportunity to learn about the successes and improvements Debbie's campaigning has achieved, along with the challenges still to surmount. <https://friendsofthedales.org.uk>

**Victoria Benn**



## REETH AND DISTRICT GAZETTE LTD

### THE OLD TEMPERANCE BOOKSHOP

Reeth, Richmond, DL11 6TE

Tel. 01748 884185

Christian books & cards, Fairtrade  
crafts and food



Beside the village  
green in Reeth, we  
are 50 yards up from  
Reeth Evangelical  
Congregational  
Church

*Opening times:*

**1.30pm - 4.00pm Thurs, Sat**

**10.30am - 4.00pm Fri**

**CLOSED Sunday 24<sup>th</sup> Dec.**

**REOPEN Thurs 4<sup>th</sup> Jan 2024**

two dales bakery  
reeth

## ARTISAN BAKERY & CAFÉ

Delicious breads and pastries  
Food served all day including  
vegetarian/vegan options  
Well behaved dogs welcome  
Visit us at the Reeth Dales Centre,  
Silver Street, Reeth,  
North Yorkshire, DL11 6SP  
Please see our website  
for current opening times  
[www.twodalesbakery.co.uk](http://www.twodalesbakery.co.uk)  
☎ 01748 905001 📱 📷

## REETH & DISTRICT COMMUNITY LUNCHEON CLUB 14TH DECEMBER 2023

PLEASE COME ALONG TO ENJOY A 2 OR 3 COURSE  
LUNCH IN THE "KINGS ARMS", MARKET PLACE,  
REETH ON THURSDAY 14TH DECEMBER 2023.  
THE PRICES ARE FOR 2/3 COURSES OF HOME  
COOKING.

WE WILL HAVE THE USE OF THE FUNCTION ROOM  
FROM 12.00-15.00 HRS.

ALL ARE WELCOME TO ENJOY GOOD FOOD AND  
HAVE A GOOD TIME MEETING OLD AND NEW  
FRIENDS.

PLEASE REMEMBER TO BOOK YOUR TABLE ON  
01748 884259

## T.A.R.Longstaff

Mobile Hydraulic hose  
repairs in Reeth and  
surrounding areas,  
anywhere anytime.

Also mobile on site  
welding.

Tel Percy on  
07889725349.

## Dales Police Crime Bulletin



### Monthly Police Report - October 7<sup>th</sup> - November 4<sup>th</sup>

We do not report crimes whereby victims could be identified, for example Domestic Violence or Harassment although they are included in the totals below.

Crimes of note: Overnight 7<sup>th</sup> October a Quad bike was stolen from the Marske area. Reported 8<sup>th</sup> October, theft of money from the parking honesty box at Gunnerside. Overnight 3<sup>rd</sup> November a container belonging to Wensleydale Railway was broken into and approx. £6,000 of tools and equipment was stolen.

- 10 - Concern for Safety
  - 3 - Fraud (on line /phone)
  - 10 - Road Traffic Collision (minor)
  - 4 - Theft
  - 2 - Burglary
  - 7 - Violence (including animals)
  - 2 - Hoax Emergency calls
  - 15 - Abandoned Calls
  - 7 - Anti Social Behaviour (personal)
  - 2 - ASB (nuisance)
  - 3 - Lost/Found Property (Dogs and Bikes)
  - 4 - Wildlife (Raptors)
  - 1 - Stalking/Harassment
  - 6 - Road related offences (manner of driving/vehicles without tax or insurance and possible OPL)
  - 1 - Drug related offence
  - 3 - Reports of missing Persons
  - 14 - Suspicious Circumstances
  - 10 - Highway Disruptions (Floods/Trees/Animals)
- In total 118 calls were received

reporting either the above or making General enquiries.

The Team continues attending Parish/Council meetings and local Community groups, duties permitting.

You can sign up to North Yorkshire Community messaging by visiting the NYP site or if you wish contact me, [Donald.watson@northyorkshire.police.uk](mailto:Donald.watson@northyorkshire.police.uk) providing your First Name, Last Name, House Number/Name, Postcode, Mobile number and email address and I will sign you up.

Stop Scams UK. Call 159 if you think someone is trying to trick you into handing over money or personal details - stop, hang up and ring 159 to speak directly to your Bank. It works in the same way as 101 for the Police or 111 for the NHS.

Stop Scams UK. Call 159 if you think someone is trying to trick you into handing over money or personal details - stop, hang up and ring 159 to speak directly to your Bank. It works in the same way as 101 for the Police or 111 for the NHS.

**PCSO 5232 Don Watson.**

**PC355 Heather Campbell.**

**PCSO Sharon Diamond.**

**PCSO 5550 Tracie Taylor-Paige**

### **Cosy Holiday Cottage**

Attached to owners' farmhouse on hill farm in Arkengarthdale. Sleeps 2. No pets. E.M. on request.

**Mrs Gladys Atkinson**

**Tel. 01748 884550**

## Remedial Massage

*musculoskeletal conditions & injuries,  
headaches, stress and anxiety*

## Manual Lymphatic Drainage

*lymphoedema, post-surgery*

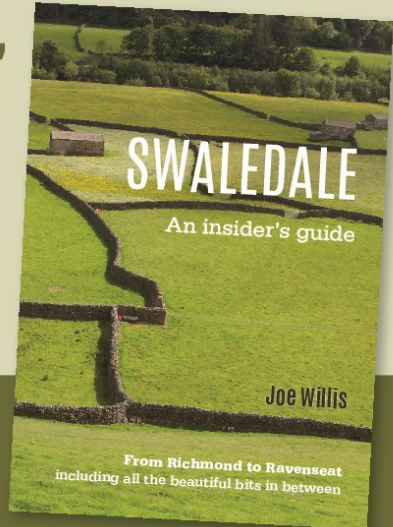
**Jennifer Thursfield** NAMMT  
MLDUK CNHC

Tel: 07889 546608 • Based in Richmond

[jtremedialmassage@gmail.com](mailto:jtremedialmassage@gmail.com)

[www.jtremedialmassage.co.uk](http://www.jtremedialmassage.co.uk)

**Just published,**  
“a behind-the-scenes  
glimpse into the  
people and places  
that make Swaledale  
so bloomin’ special”.



Available now from Reeth  
Gift Shop, Reeth Post Office,  
The National Park Visitor  
Centre, Dales Bike Centre, Swaledale  
Woollens and Keld Resource Centre

**£5.99**



**Recruiting now for  
volunteers to help with our  
indoor and outdoor  
activities.**

**Volunteers** are needed to help with our Scout Group Meetings.

All you need is enthusiasm, a sense of purpose, and a willingness to work with our young people. No previous experience is necessary. Opportunities exist to become Leaders and Assistant Leaders for Beavers, Cubs and Scouts.

If you are interested in joining our small friendly and informal team, would like to come and see what is involved at a meeting or would like further information about this rewarding experience, please contact:

**Nick Caldwell, Group Scout Leader on 01748 884340.**



## BLUEBOXT - DECEMBER UPD

### **Wensleydale Young Musician of the Year**

At the time of writing this month's update, we have just launched the first young musician's competition in partnership with the Wensleydale Rotary Club. As the December copies of this community newsletter are distributed, the competition will just be about to take place so do come along to St. Matthew's Church in Leyburn on **Saturday 2<sup>nd</sup> December** and support the young performers from across Wensleydale and Swaledale who are taking part. Doors open 9.30am with the first class starting at 10.30am - everyone is welcome to attend. Entry is free with the option to donate and help defray the costs of delivering the competition. Refreshments will be available. Visit [www.wensleydale.org](http://www.wensleydale.org) for full details.

### **Leyburn Jazz Festival**

The third annual Jazz festival took place in October. Special thanks to Claire Cameron, Neil Dutton and Alastair McLachlan who give their time year-round to make it all happen. To our dedicated technical team - Simon Chorley and Fred Norman - and the teams at St. Matthew's Church, Leyburn Arts and Community Centre and Tennant's Garden rooms for hosting events. There are numerous volunteers who support the events over the four days. Without you it would not

be possible - Thank you.

Over 50 people took part in our educational activities creating new music together including young people working with the festival's resident composer Paul Edis, as part of the Leyburn Jazz Collective and our community choir collaboration with York City Gospel Choir. This year saw records sales with over 1,120 tickets allocated. Despite the terrible weather, every performance was well attended. Planning is already underway for the 2024 festival which takes place from 17<sup>th</sup> to 20<sup>th</sup> October.

### **December Events**

**Christmas Together - Saturday 9<sup>th</sup> December, 2.00pm at St. Matthew's Church Leyburn.**

Enjoy a festive sing-along with the Wensleydale Community Gospel Choir, the Dales Pop Choir and the Leyburn Jazz Collective. Doors open 1.30pm for 2.00pm start. Tickets £10 inc. mulled wine and mince pie [U18s £5]. Raffle and refreshments available.

**A Magical Christmas Concert 2023 -** BlueBoxt's young performers present a celebration concert featuring festive favourites and highlights from their 2023 programme, supported by Colin Bailey and Mick Yare. Friday 15<sup>th</sup> December - Thoraby Village Hall and Saturday 16<sup>th</sup> December - Leyburn Arts and Community Centre. Doors open 7.00pm for 7.30pm start. Tickets £12 inc. mince pie [U18s £6]. Bar and refreshments will be available.

**Want to work in the music and creative industries?**

We have an exciting opportunity for

## REETH AND DISTRICT GAZETTE LTD

young people aged 18-25yrs who are interested in developing their creative ideas and career potential in the music industries. The roles are varied, flexible hours, office or home working, freelance contracts and include development time for personal projects. Contact us to arrange an informal chat to find out more and discuss your creative goals and aspirations. Raising Creative Aspirations is backed by Youth Music, a national charity, thanks to the players of the People's Postcode Lottery.

To find out more or register your interest please contact Colin Bailey on 07711 21169 or [admin@blueboxt.org](mailto:admin@blueboxt.org) or visit [www.blueboxt.org](http://www.blueboxt.org)

## MICHAEL GUY ELECTRICAL

FULLY QUALIFIED ELECTRICIAN

Over 20 years experience working in the dales in all areas of electrical work.

Some of my services include:

Complete rewires | Electrical installation  
condition reports | Electrical vehicle  
charging points | Additional & alterations  
to socket & lighting points |  
Replacement of storage heaters to modern  
eco panel heaters.

Contact Michael :

T: 01748 886097 | M: 07980130017

Mail: [info@michaeltguyelectrical.co.uk](mailto:info@michaeltguyelectrical.co.uk)

Website: [Michaelguyelectrical.co.uk](http://Michaelguyelectrical.co.uk)

**APPROVED ROINTE HEATER INSTALLER**

**NICEIC APPROVED CONTRACTOR**

## A Magical Christmas 2023

BlueBoxt's young performers  
present a celebration concert  
featuring festive favourites &  
highlights from the year.

**Fri. 15<sup>th</sup> Dec. 7.30pm**

Thoraby Village Hall

**Sat. 16<sup>th</sup> Dec. 7.30pm**

Leyburn Arts & Com. Centre

Tickets £12 inc. mince pie [U18s £6]

[www.blueboxt.org/boxoffice](http://www.blueboxt.org/boxoffice)

Colin Bailey 07711 211169

## SWALE HAIR SPA



LOOK GOOD

FEEL GREAT

BE-WELL.

We are open **Tuesday- Friday**, plus every 5th  
Saturday.

Call us on: 01748 884627

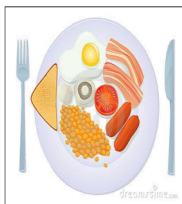
Email us: [info@swalehairspa.com](mailto:info@swalehairspa.com)

[www.swalehairspa.com](http://www.swalehairspa.com)



## CHRISTMAS BIG BREAKFAST

SATURDAY 2nd DECEMBER  
REETH MEMORIAL HALL 9.30-12  
Full Yorkshire Breakfast  
Vegetarian choices  
Raffle



## M. GUY - PLUMBING

For all your plumbing requirements  
AGAS & RAYBURNS SERVICED  
kathrynguy@designermakersmarket.co.uk  
Tel: 01748 - 825640

Langthwaite - Arkengarthdale

## RED LION INN

Free House  
Real Ales – Bar Snacks  
Books & Maps  
Tel. 01748 884218

## Bellegreen Holiday Cottage

Overlooking Reeth Green  
Sleeps 7 in 4 bedrooms

www.bellegreen.com  
Keith@bellegreen.com  
0115 922257

Music Tuition for all ages with  
www.colinbaileymusic.co.uk  
07711 211169

Drums & Percussion; Vocals;  
Piano & Keyboards; Music Theory;  
'Get Musical' Workshops.

## Support the Reeth & District Gazette

Order your printing from us and  
we will credit 10% of the value of  
your order to the Gazette account  
at no extra cost to you!

**Quote Gazette when ordering**

## Booklet Printing

- Reports
- Manuals
- Brochures
- Catalogues
- Newsletters



Saddle Stitched - Perfect Bound - Wire Bound

From your computer files or hard copy

## NCR set Printing

- Invoices
- Estimates
- Order Forms



Fast Turnaround - Padded - Loose Sets



## Reflections PhotoGraphic Services

Tel: 01833 690733

www.refprint.co.uk  
email: sales@refprint.co.uk



## M.W Waste Services

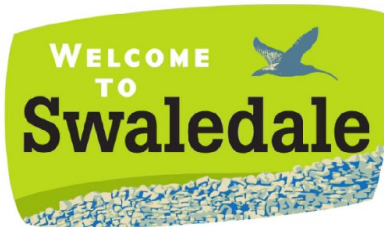
Environmental & Drainage Specialists

Septic Tanks Emptied & Cleaned  
Blocked Drains Cleared Fast  
Grease Traps & Interceptors Emptied  
Soakaways Rebuilt & Repaired  
Gully Emptying & Street Cleaning  
Refuse Collection  
Septic Tanks Installed  
High Pressure Drain Jetting  
Mobile Steam Cleaning  
Sewage Plant Maintenance  
Industrial & Domestic Work Carried Out

Low Hang Bank Depot  
Melsonby  
Richmond  
North Yorkshire  
DL10 5NQ

Tel: 01325 377860/377850  
24/7 Call Out  
[Http://www.mwwaste.co.uk](http://www.mwwaste.co.uk)

Clear Your Blocked Drains Fast With Our High Pressure Jetter  
Free Quotes & Estimates



**S A B F**

**Swaledale & Arkengarthdale  
Business Forum**

Members, get assistance to  
enhance or update your entry

Non-Members, send your  
details for a basic entry

visit our website  
[www.swaledale.net](http://www.swaledale.net)

Packed with useful information for  
visitors and locals alike, including  
a comprehensive services directory

## Gunnerside Chapel, December.

There are two noteworthy events  
taking place in the Chapel in December:

First, on Tuesday 19<sup>th</sup> at 6pm, the  
School will be holding its Carol Service  
in the Chapel. Although they will  
obviously be supported by their  
parents and families, anyone else  
wanting to show their support would be  
very welcome, and you might be  
surprised at the quality and enthusiasm  
that will be on display.

Then on Thursday 21<sup>st</sup>, (again at 6pm),  
the Gunnerside Shortest Day (9)?  
Lessons and Carols Service will take  
place, followed as usual by tea and  
buns. Attendance a must for everyone -  
(this is one of those events where even  
those who think that they can't sing  
are expected to take part).



Richard Hunt

## YORKSHIRE FOOT CLINICS

Podiatry/Chiropody  
Alex Kravchenko MChS, BSc Pod (Hons)  
Nail cutting, callus, corns &  
ingrowing nails

All treated in the comfort of your  
home

Tel. Richmond 850020  
Or Hawes 667449

*Always insist on state registered*



**CHRISTMAS BLESSINGS**

*Luxury holiday homes & lodges for sale in Swaledale -  
the gateway to the Yorkshire Dales*

[www.swaleviewpark.co.uk](http://www.swaleviewpark.co.uk) | 01748 823106



**Christmas at Marrick**

**Sunday 3rd December 7pm**

The Friends of Marrick host this joyous annual event.

A candlelit evening of traditional song with  
🎵 The Marske Choir 🎵 Refreshments & Raffle

Tickets £12 available from Reeth Post office or ring Judith 826793

Buses to Marrick from Nuns Car park Richmond 6-15pm and  
from Reeth Green 6-30pm



# James Peacock



## Solid Fuel Merchant Bainbridge

Good quality fuels at  
competitive prices.  
Deliveries to Wensleydale,  
Swaledale and Coverdale.  
No delivery too small.

Tel. 01969 650212/650465

Email:

[jamespeacock@btconnect.com](mailto:jamespeacock@btconnect.com)

[www.james-peacock.co.uk](http://www.james-peacock.co.uk)

# McGarry & Co SOLICITORS



*Local Knowledge &  
Practical Advice*

## Your Legal Companion

- PROBATE & ADMINISTRATION
- POWERS OF ATTORNEY
- WILLS
- NURSING & RESIDENTIAL HOMES
- AGRICULTURAL MATTERS
- LAND TRANSACTIONS

Offices At:

Barnard Castle

Hawes

[mbmcgarry.co.uk](http://mbmcgarry.co.uk)

[e.office@mbmcgarry.co.uk](mailto:e.office@mbmcgarry.co.uk)

t: 01833 600 160

DL12 8EQ

t: 01969 666 290

DLS 3QS

# Hindsight

## Accountants LLP

Tony Fava

- Bookkeeping, Payroll and VAT Returns
  - Annual accounts and tax returns
  - Company Formations

11 Finkle Street, Richmond, DL10 4QA

Tel: 01748 822049

Email: [tonyfava@hindsightaccountants.co.uk](mailto:tonyfava@hindsightaccountants.co.uk)

## Martyn Leaver

### Dry Stone Waller

- Farm or domestic work
- Drystone or facewalling
- Fence repairs and paving
- Misc jobs etc

Thwaite 01748 886025

Mob: 07971 456 043



# KARL LONGDEN PLUMBING

Reeth, North Yorkshire

[karllongdenplumbing@yahoo.com](mailto:karllongdenplumbing@yahoo.com)

Tel. 01748 889951

Mob. 07969 329893

24 HOUR CALL OUT SERVICE





Many thanks to Katherine Calvert of Swaledale Snaps for this picture of the Reeth fireworks taken from Fremington Edge



**Swaledale Footcare**  
**Meg Squires MCFHP MAFHP**  
Clinic Visits at Thornborough Hall Leyburn or  
Home Visits Including:

- Toenail Cutting
  - Corn Treatment
  - Removal of Hard Skin and Calluses
  - Treatment of Thickened and Fungal Nails
- Phone : 01748 884795 or Mobile: 07929065602  
Email meg.e.squires@gmail.com



Member of the British Association of Foot Health Professionals



**REETH POST OFFICE**  
**More than just a Post Office**  
**Its a 25+ miles round trip to**  
**the big shops.**



**SERVING OUR COMMUNITY**  
[www.reethpostoffice.co.uk](http://www.reethpostoffice.co.uk)

**Property Maintenance  
& General Building**

Building work & property maintenance  
undertaken

Plumbing, tiling, plastering

Kitchen & bathroom fitting

Joinery works

Small jobs welcome

Free No Obligation estimates

Also detail plans prepared for planning  
applications

**Contact Gary**

Tel. 01748 886691 / Mob. 07896  
147207

E-mail Swaddyman@gmail.com

**A. HOWARD JOINERY**

no job too small

01748 884045

andrewhowardjoinery@gmail.com

The Gazette is online:  
[www.2dales.org.uk](http://www.2dales.org.uk)

**Rose Cottage**

Just off the village green in Reeth

Sleeps 4

Dogs welcome

Tel 01964 562239

Email: [rosecottagereeth@gmail.com](mailto:rosecottagereeth@gmail.com)

**G E BROWN & SON**  
**BUILDING CONTRACTORS**



All Building Work Carried Out  
Damp Proof Course & Timber Treatment  
Specialist Joinery Work  
Work carried out by time-served qualified craftsmen

Email: [gebrownson@f2s.com](mailto:gebrownson@f2s.com)

Telephone: 01748 886356

**A.J. CLACHER LTD**  
Established 1961  
**PLUMBING & HEATING ENGINEERS**

- Gas, oil and solid fuel central heating installations
  - All aspects of plumbing and gas installations
  - Boiler servicing and repair • Landlord Gas Safety inspections
  - Bathroom installations and Plumbing • Heat Pumps and Solar Heating
- Unit 38 Forge Way, Cleveland Industrial Estate, Darlington DL1 2PB

Tel. 01325 468372 • E-Mail [info@ajclacher.co.uk](mailto:info@ajclacher.co.uk)  
[www.ajclacher.co.uk](http://www.ajclacher.co.uk)



**Lady Interior Decorator**

Painting & Decorating, Competitive rates  
Established 30 Years: Based in Richmond  
Free estimates, Friendly advice, Est 29 years

Call Yvonne on: 07838378836

Email: [yvonesdecor@hotmail.co.uk](mailto:yvonesdecor@hotmail.co.uk)

# REETH AND DISTRICT GAZETTE LTD

## The Charles Bathurst Inn ARKENGARHTDALE

Outstanding fresh food served in a warm & friendly atmosphere.

19 en-suite bedrooms with amazing views.  
Available for dinners, weddings & meetings.



- Open Lunchtime 12 – 2.30pm Tuesday – Sunday (Closed Monday lunch\*)
- Evening Meals every night 6 – 8.30pm
- \*Open Bank Holiday Mondays

**FOR FURTHER DETAILS OR TO RESERVE A TABLE**

Telephone: 0333 700 0779 Website: [www.cbinn.co.uk](http://www.cbinn.co.uk)

## The Punch Bowl Inn

Outstanding fresh food served in a warm & friendly atmosphere with stunning views of Swaledale.



- Open Lunchtime Tuesday – Sunday (Closed Monday lunch\*)
- Evening Meals Mon - Sat 5.30 – 8.30pm, Sun 5.30 – 8pm
- \*Open Bank Holiday Mondays

**FOR FURTHER DETAILS OR TO RESERVE A TABLE**

Telephone: 0333 700 0779 Website: [www.pbinn.co.uk](http://www.pbinn.co.uk)

## HARKERS COACHES



Hill Top Garage, Reeth

Tele: 01748 884533

Pauls Mob: 07703 559959

**COACH,  
PRIVATE  
HIRE &  
GARAGE**

Coach, Mini Bus and private taxi hire  
General vehicle maintenance including services, tyre supply, fitting and balancing.

## PROPERTY MAINTENANCE

General Building Work, Dry Lining, Decorating, Electrical Work, Kitchen Fitting, Joinery, Paving, Garden Maintenance, Roofing, pointing & guttering work. Small jobs welcome.

Free estimates.

Contact Martin or Django

Tel 01748 886 465 Mob: 07813 715 120

Email: [martinkiss1960@gmail.com](mailto:martinkiss1960@gmail.com)

## S.J.R Plumbing Services

For all of your domestic Plumbing requirements.

C & G/Advanced C & G Qualified  
Reliable With Very Competitive Rates

Based in Reeth

**01748-884036**

**Or 07977-297563**

# Diary Dates

## December

**Fri 1st Dec** - The Wilderness Yet  
Reeth Memorial Hall 8pm

**Fri 1st Dec** - Christmas Crafting,  
Arkengarthdale Hub 6.30–8[m

**Sat 2nd Dec** - Scouts Big Breakfast,  
Reeth Memorial Hall, 9.30–12

**Sun Dec 3rd** - Come and Sing Carols,  
4pm St Andrew's Grinton

**Sun 3rd Dec** - Christmas at Marrick,  
Marrick Priory, 7pm

**Sat 9th Dec** - Swale Singers Winter  
Celebration concert, Reeth Memorial  
Hall, 7pm

**Sat 9th Dec** - Station Singers,  
Carolling Around Europe, 6.30pm, St  
Mary's Richmond

**Sat 16th Dec** - 10am to noon, Coffee  
& Carols, Reeth Evangelical  
Congregational Church

**Tues 19th Dec** - Reeth Brass Band  
Christmas Concert, Reeth Memorial  
Hall, 7.30pm

**Wed 20th Dec** - 7pm, Carols by  
Candlelight, Reeth Evangelical  
Congregational Church

## January

**Mon 1st Jan** - 7pm New Year  
Fireworks & BBQ Reeth Green

**Sat 27th Jan** - 7.30pm - January Jazz  
& Cocktails Night @ The Station  
CafeBar

### Delightful Holiday Cottage

Available to let in Reeth  
A secluded garden and access to all the  
amenities that Reeth has to offer.

Sleeps 4. Call 07854 121774  
janedavies824@gmail.com



Going above and beyond for our clients...

For more information please visit our website at:  
[hallandbirtles.co.uk](http://hallandbirtles.co.uk)






**Hall & Birtles**  
-SOLICITORS- 

*Our services include:*

- Landlord & Tenant • Buying & Selling Property • Wills, Trusts & Probate
- Divorce & Matrimonial Matters • Commercial & Private Disputes
- Agricultural Matters • Powers of Attorney

**30 min FREE initial consultation**

Directors: Alastair C. Birtles BA Hons | Stuart J. Hall LL.B | Deborah C. Parish LL.B

**Leyburn Office**  
The Office, Golden Lion Yard, Leyburn,  
North Yorkshire, DL8 5AS  
Tel: 01869 625256  
Email: [leyburn@hallandbirtles.co.uk](mailto:leyburn@hallandbirtles.co.uk)

**Hawes Office**  
Bank Chambers, Main Street, Hawes,  
North Yorkshire, DL8 3QL  
Tel: 01869 667171  
Email: [hawes@hallandbirtles.co.uk](mailto:hawes@hallandbirtles.co.uk)

## Hudson House

Your valuable community asset  
Rooms for hire

Suitable for meetings, lectures, talks,  
training or social events.

**The Meeting Room** - maximum of 30  
people.

**The Meeting Place** (evenings only) -  
maximum of 10 people.

Access to PCs, Internet, printer, photo-  
copier, laminator and kitchen facilities.

**The Orchard Gallery** for hire  
Suitable for exhibitions of paintings,  
photographs and other artwork.

Own entrance through the garden.  
Sales can be handled for you.

For prices (special rates for community use),  
bookings or more information please  
contact Jill May on 01748 884 485 or  
[admin@hudsonhouse.info](mailto:admin@hudsonhouse.info)

**The Christmas Robin**

By local poet Maura Kelly



The little bobbing Robin  
Sat on my windowsill  
And looked at me with sadness  
As I lay in bed unwell

And as it flapped its little wings  
To welcome Christmas Day  
It hopped upon my table  
To hear what I might say

'Hello my friend, good cheer to you  
The snow has come at last  
And much as I would like to play  
My days of fun have past

For my leg it is now broken  
Said the doctor with concern  
So rest I must for many weeks  
What a lesson to be learned'

Then Robin gave a wink to me  
And flew around the room  
And everywhere he went, he chirped  
'Don't move, I'll be back soon'

Then in a moment he was gone  
Through the window at great haste  
And way beyond the curtain  
He had picked up quite a pace

But in the distant echoes  
The smell of embers burned  
As Winter's chill descended  
Robin suddenly returned

And in his beak were tiny twigs  
Too small for me to see  
But back and forth he came and went  
To build a Christmas tree

And bit by bit it slowly grew  
Taking shape where I did lay  
As I looked on in fondness  
At Robin's caring ways

And as a tear fell on my cheek  
His present now emerged  
With moss and fern to decorate  
The sound of music could be heard

And with the ringing of the bells  
A distance cry was made  
As Robin flapped his wings once more  
To start his big parade

For birds and animals countrywide  
Stood in the snow below  
To wish me a Merry Christmas  
And good tidings on the go

The sparrows and the magpies  
The pigeons and the crows  
The foxes and the rabbits  
Deers leaping high and low



The badgers and the drumming moles  
The squirrels marching bold  
As hawks kept watch across the ground  
The mice hid from the cold

For Robin's friends had joined him  
On this very special day  
To put a smile upon my face  
And blow the sorrows away

The gift of friendship they did make  
In the garden of my home  
Stirred up feelings of great happiness  
That I was loved and not alone

And with this scene of wonderment  
And Robin's endearing ways  
A stocking full of magic  
Arrived for me on Christmas Day