

REETH & DISTRICT GAZETTE

ISSUE NO. 361

JULY 2026



*Your local news magazine
for the two dales*

PRICELESS BUT DONATIONS WELCOME

REETH AND DISTRICT GAZETTE LTD

Fremington Village Hall (Formerly Fremington Sunday School)



renewing our "Mediterranean" style garden in the sheltered space out the back?

Do come to the AGM and feed in your ideas. Or e-mail us at the address below with your thoughts.

AGM: Mike Evershed
(mikeatnutmeg@gmail.com)

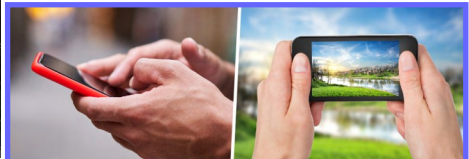
Bookings: Carol Whitam
(c.whitham149@btinternet.com)

It hardly seems a year since we had our open hall event about the history of Fremington Village Hall. Before that, many people weren't even aware of the Hall's existence, beyond seeing a rather anonymous building flash by as they drove between the bridges at Reeth and Grinton.

However, having relaunched the hall by looking into the past last year, it's now time to move forward into the future.

On Tuesday 14th July 2026 at 4.30 we have our annual general meeting and we'd like ideas about how we can use the hall, especially in ways that would build community. Any resident of Swaledale or Arkengarthdale is welcome to attend (the meeting is never very long). But you are also welcome to send suggestions to the e-mail address below.

Here are some starters for 10. Would anyone be interested if we were to organise an all-age games night (are you a whizz at Monopoly?). Would you welcome a "community fair" where people could have an introduction to local clubs and societies? Or perhaps one or two people would like to join us in



FREE Digital courses

Coming soon to Hudson House, Reeth, DL11 6TB

Using the NHS App

This free 2 hour session will help you learn how to use the NHS App.

Wednesday 8th July 9:30 - 11:30 or

Wednesday 29th July 10-12 or

Wednesday 5th August 10-12

Picture This! Smartphone Photography Course

Come along to this fun, free course and learn the essentials of smartphone photography, from composition to lighting and editing. Whether you're a complete beginner or want to improve your skills, you'll learn how to capture extraordinary photos.

Wednesday 29th July 1-3pm for 2 weeks

Everyone welcome. Bring along your tablet/smartphone.

For more information or to book a place please contact Abby Armstrong on 01609 533906, email abby.armstrong@northyorks.gov.uk or pop into Hudson House.

northyorks.gov.uk/adultlearning
Tel: 01609 533 066
Email: AdultLearningService@northyorks.gov.uk



002184381996

REETH AND DISTRICT GAZETTE LTD

Gazette Management Committee

Chairman: Susan Miller

Longstone, Low Row, Richmond
DL11 6NA

Tel: 01748 886 358

E-mail: chairman@reethGazette.co.uk

Secretary: Sue Alderson

Holme View, Low Row, Richmond,
DL11 6PE

Tel: 07494 755489

E-mail: secretary@reethGazette.co.uk

Editor: Jackie Pope

2 Pinfold, Peter Lane, Burton Leonard,
Harrogate, HG3 3RZ

Tel: 07885 498676

E-mail: editor@reethGazette.co.uk

Treasurer: Andrew Bedford

Glory Be, Blades, Richmond, DL11 6PS

Tel: 01748 886 974

E-mail: treasurer@reethGazette.co.uk

Subscriptions:

E-mail:

subscription@reethGazette.co.uk

Distribution: Marilyn Brown

The Cottage, Healaugh, Richmond DL11
6UA

Tel: 01748 884111

Email:

distribution@reethGazette.co.uk

Published by

The Reeth & District Gazette Ltd.

Company Number: 06541854

c/o The Company Secretary

Andrew Bedford, Glory Be, Blades

Richmond, North Yorkshire DL11 6PS

Tel: 01748 886 974

E-mail: treasurer@reethGazette.co.uk

No material may be reproduced in whole or in part without permission. Whilst every care is taken for accuracy, the publishers cannot be held legally responsible for any errors or opinions in articles, listings or advertisements.

ADVERTISING

For information on advertising and prices, please contact the treasurer.

Advertising copy, should be sent to the editor.

The editor reserves the right not to publish any advert or article considered to be inaccurate or misleading.

All articles or items for inclusion should be sent to the editor

E-mail: editor@reethGazette.co.uk
or left at Reeth Post Office.

Donations

Can be made through our collecting tins in: CB Inn, Copper Kettle, Dales Bike Centre, Hudson House, Muker Tea Shop and Store, Punch Bowl Inn, Red Lion, Reeth Gift Shop, Reeth Post Office, Swaledale Woollens, and The Old School in Muker or by bank transfer to 77-91-29 40807260, using the reference "Supporter". Thank you.

Gazette Deadlines

The deadlines for the next two months are:

August issue: July 13th

September issue: August 10th

Please Note: We will endeavour to publish all suitable items submitted by the deadline date but this is at the sole discretion of the editor.

Posting The Gazette: Issues can vary in page number and so weight over the year. Postage will require a Large Letter size and will likely cost £2.00 2nd class, or £3.60 1st class but please check with the Post Office.

REETH AND DISTRICT GAZETTE LTD

Farewell

Thank you to everyone who contributed so kindly to the collection for Dr Brookes at Reeth Post Office and took the time to write a message in the book.

On Thursday 28th May, Adele presented Dr Brookes with a framed photograph from Scenicview Gallery and £1,105 in cash thanks to your thoughtful donations. Dr Brookes was overwhelmed by everyone's kindness and generosity.

Thanks to Graeme, from Scenicview Gallery, for capturing Dr Brookes being presented his gifts. (below and front cover)



From Dr Brookes

When I left medical school, I never considered becoming a GP. I joined the Army and, at the time, my heart was set on specialising in trauma surgery or burns and reconstructive surgery. Not long after starting my military career, Tony Blair invited me to participate in the Iraq conflict.

Going to war led to two major changes in my life. First, I found myself as the sole doctor in a remote area,

responsible for every aspect of the health and wellbeing of a group of soldiers. This included day-to-day health issues, being first on the scene of serious injuries, environmental health, field dentistry, and preparations for a chemical or biological weapon attack. The breadth of this responsibility opened my eyes to the role of a GP.

Second, I read *A Fortunate Man* by John Berger. The book is a true account of a rural GP working in the New Forest in the 1960s and follows his provision of care across the full spectrum of medicine, from minor surgery to end-of-life care. The opening chapter describes the GP driving his Land Rover to treat a patient at the scene of an accident, which may sound familiar to some.

Marie also reminded me that, while I was good at taking things apart to see how they worked, I was not nearly as good at putting them back together and would therefore make a poor surgeon. I needed no further encouragement and signed up for GP training on my return to the UK.

A few years later, on leaving the Army, I was fortunate to be offered a position in Reeth by Dr Paul Bond. After his retirement a year later, Marie and I were able to build on his work and develop the service further. Our philosophy has always been to ask ourselves, "Is this the standard of care I would want for my own family?" I hope we have remained true to that principle as much as possible.

Over the years, both the practice team and our patients have come to feel like our own extended family, sharing together in the ups and downs

REETH AND DISTRICT GAZETTE LTD

that life brings.

The decision to leave has been an extremely difficult one. The NHS has changed considerably during the 19 years since I arrived in Reeth, with a general trend towards larger practices. Efforts to recruit a successor over the past six years have been unsuccessful. I suspect this is partly because GPs are trained differently today and attitudes towards remote and isolated practice have changed.

Marie and I have been overwhelmed by the support we have received and by the number of cards and gifts given to us in recent weeks. We are deeply grateful for your kind words, the Scenic View picture, the collection, and the book.

Reading through the memories people shared, I was reminded of stories and sayings I had long forgotten: "Plan for the worst, hope for the best," or, when giving an injection, "One of us should look, and I think that ought to be me." I am especially touched that so many people—including former patients and others I have not seen for many years—have taken the time to get in touch. It is truly humbling.

We will both leave the Dales with many happy memories of our time here, and I promise there will be no James Herriot memoirs.

As I close this chapter of my career, I find myself reflecting on first reading John Berger's book 25 years ago. Like the doctor whose story inspired me then, I too can say that I have been "a fortunate man".

Michael Brookes FRCGP
GP Partner
Reeth Medical Centre



Do YOU or someone you know have a visual impairment?

Do you struggle to read the newspaper?

Would you like to listen to the local news, delivered free of charge, twice a month?

If so, **Richmond and Dales Talking Newspaper** is for you.

Ring the helpline - **07876 705550**

SWALE HAIR SPA



LOOK GOOD- FEEL GREAT -BE-WELL.

At Swale Hair Spa, we offer a complete range of **hair care services** designed to help you look good, feel great, and truly unwind. From **precision cutting** and **bespoke colouring** to **restorative treatments** and **scalp care rituals**, every appointment is tailored to you. Whether you're visiting for everyday maintenance, a seasonal refresh, or a little time out for yourself, our **calm**, welcoming space and expert team are here to care for your hair and your **wellbeing**.

We are open **Tuesday- Friday**, plus every 3rd **Saturday**.

Call us on: 01748 884627

Email us: info@swalehairspa.com

www.swalehairspa.com

Hudson House

Your valuable community asset
Rooms for hire

Suitable for meetings, lectures, talks,
training or social events.

The Meeting Room - maximum of 30
people.

The Meeting Place (evenings only) -
maximum of 10 people.

Access to PCs, Internet, printer, photo-
copier, laminator and kitchen facilities.

The Orchard Gallery for hire

Suitable for exhibitions of paintings,
photographs and other artwork.

Own entrance through the garden.

Sales can be handled for you.

For prices (special rates for community use),
bookings or more information please
contact **Jill May** on **01748 884 485** or
admin@hudsonhouse.info



John Blenkiron & Sons
Funeral Directors

Incorporating Simon Barningham, Reeth



**Thinking about
a Funeral Plan?**

choice
from Funeral Partners

A Choice Funeral Plan could give peace of mind
and help your family with the cost of arranging a
funeral and understanding your personal wishes.

For more information on our plans, visit your local
branch, call us or go to blenkiron.co.uk/choice

24hr 01748 850033

Branches in Richmond, Barnard Castle, Catterick

Terms, conditions and limitations apply.

John Blenkiron & Sons Funeral Directors is a trading name of
Funeral Partners Limited (Funeral Partners) which distributes
Choice Funeral Plans, which are provided by Alternative Planning
Company Limited (APCL). Funeral Partners is an appointed
representative of APCL. APCL is authorised and regulated by the
Financial Conduct Authority with firm reference number 965282.
APCL and Funeral Partners are part of the Funeral Partners Group.



- Carpets ● Wood Flooring ● Laminates
- Vinyl Tiles ● Vinyl Sheets ● Rugs ● Accessories

nh flooring

**The Carpet
& Flooring
Specialist**

- Amtico
- Karndean
- Panaget
- Brintons
- Westex
- & more

n i c f
national institute of carpet & foorlayers

Contact us now for a **FREE** quote, advice or more information

t: 01748 822834 m: 07789 99626

e: enquiries@nhflooring.co.uk

w: www.nhflooring.co.uk

@nhflooring

@nh_flooring

@NH_Flooring

Unit 6 Borough Court, Borough Road, Gallowfields Trading Estate, Richmond. DL10 4SX



“The Mandalorian and Grogu” 2026 By John Hunter

A return to an 'up to date' review this month - yes, this film may well be *still* showing at a cinema near you! Regular readers will know that I'm a self-confessed Star Wars fan dating back to the very first release in 1977 (my first year at Uni!). We've watched three seasons of 'Mandalorian' on Disney+ now (in addition to the closely related 'Boba Fett') and eagerly awaited this *very first* big screen transfer of a Lucasfilm TV show, so a review was always in the offing!

Readers who may be 'hard of Star Wars' will have little interest in the plot and those who follow 'the way' may know more than me - so let's cut to the chase and review the movie itself. I have to admit to being a little disappointed overall, particularly after a stupendous 'pre-credits' sequence with our heroes taking out a Neo-Imperial cartel and destroying amongst others several of those huge 'snow-walkers' - a stand out sequence which would indeed prove hard to follow. The middle act features a 'Blade Runner'-esque Neon city where another untoward must be brought to book - with a highlight 'cage fight' sequence between our hero and multiple monsters of various shapes and sizes (harking back to a similar scene in my

least favourite film in the franchise, 'Attack of the Clones'). The final extended act sees our hero badly wounded and cared for by the diminutive Grogu ('Baby Yoda' or 'The child') who he is mentoring. Whilst being the only quiet and contemplative sequence in the film, the addition of some 1970's Jon and Vangelis-like synth soundscapes jarred with me - especially as the otherwise beefed up TV score by Ludwig Goransson was used brilliantly elsewhere. Villains duly dispatched there's a distinctly tagged on climax with a squadron of X-wings flying in to destroy any trace of the bad guys!

A couple of characters from the animated series are given a CG outing and Sigourney Weaver adds another 'official in charge' to her CV (*see Avatar*). There are numerous cute creatures to spot, plenty of Droids (though strangely none have any actual dialogue) and as mentioned, some superb CG effects throughout - crossing the galaxies has never looked more stunning - though the change of widescreen formats throughout can be a little disconcerting (apparently to 'accommodate' action scenes when shown in IMAX). We briefly see Pedro Pascal's face when his helmet is removed - possibly as he was an unknown when the TV series began but is now hot property after 'Gladiator 2', 'Fantastic 4' and other big hits. Worth seeing, but not, I fear, the resounding hit Lucasfilm were expecting.



REETH AND DISTRICT GAZETTE LTD

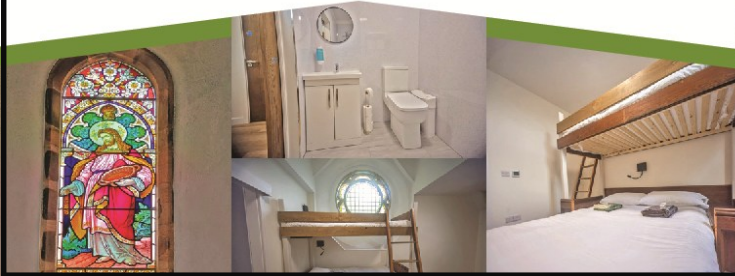
*A new and unique place
to stay in Hudswell
near Richmond,
North Yorkshire*



**St. Michael's
LODGE**
stmichaelslodge.com

Hudswell Community Charity have acquired our former parish church and thoughtfully converted it into a **Lodge for walkers, cyclists and other visitors** to the Yorkshire Dales.

01748 343022 / 07521158338
enquiries@stmichaelslodge.com



richmondprint

QUALITY PRINTING & DESIGN

Bespoke
wedding stationery...
For all your wedding stationery needs, we strive for the highest quality at prices to suit all budgets. From a simple digitally printed invite to lavishly hot foiled, thermographed or letterpress printed stationery, all guaranteed to complement your special day.
Call in to see samples and find inspiration.

1b Racecourse Road, Gallowfields Ind. Estate
Richmond, North Yorkshire DL10 4TG
e: richmondprint1@gmail.com
w: www.richmondprintltd.co.uk
T: 01748 825999 f find us on Facebook

We are open Monday to Thursday 8.30am till 5pm
Friday 8.30am till 12.30pm

*Leaflets . Business Cards . Booklets . Invitations . Labels
Letterheads . Envelopes . Invoice Books
Calendars . Greetings Cards . Postcards
Raffle Tickets . Menus . Posters . etc...*

We are a Richmond Business & Tourism Association award winning company

We are also your one stop shop for all of your photocopying needs as well as comb & wire binding, laminating and encapsulating.

REETH AND DISTRICT GAZETTE LTD

Cutting it Fine Thursday 16 July 7.30 Gunnerside Village Hall

TLC@Gunnerside is hosting a return visit from Jane and Rebecca of Cutting it Fine. They re-create and model historical costumes and on this visit they will be showing us an:

1886 Victorian Afternoon Visiting Dress

They describe the outfit as "Layers upon and Layers". No decent Victorian lady would consider leaving her parlour wearing fewer than three petticoats.

Modelling corset and crinoline, they'll show how Victorian fashion was more about engineering than couture. Research into industrial archaeology, and lots of trial and error have gone into creating this sumptuous silk dress, which would be ideal for visiting a museum or friends for tea.

In order to protect our model's modesty, we request that the evening is "ladies only", as the presence of a gentlemen might bring an unwanted blush to the cheeks.

After a fascinating glimpse into the tortures of Victorian ladies' fashion, there will be tea, cakes and chat. Don't lace your corsets too tightly for the evening so you'll have room for plenty of sweet treats.

Visitors are welcome, just pay £4 on the door. Or you can become a member of TLC for only £10 for the year and enjoy a range of talks, workshops and demonstrations.

Keep an eye on Facebook and the Gazette for monthly updates.

Sue Barron 07579 795886 (I'm on WhatsApp)

HARKERS COACHES



Hill Top Garage, Reeth

Tele: 01748 884533

Pauls Mob: 07703 559959

**COACH,
PRIVATE
HIRE &
GARAGE**

Coach, Mini Bus and private taxi hire
General vehicle maintenance including services, tyre supply, fitting and balancing.

J. N. & E.

Capstick

INSURANCE CONSULTANTS LIMITED

CIR
COMMERCIAL
INSURANCE
AWARDS 2017
BROKER CLAIMS TEAM
OF THE YEAR

Specialising in farm,
home and motor
insurance

A local company, small enough to care, big enough to compete. So give us a try.

36 Main Street,
Sedbergh
LA10 5BP
Tel: 015396 20124
Fax: 015396 20791

Market Square,
Kirkby Stephen
CA17 4QT
Tel: 017683 72285
Fax: 017683 72346

Hawes Auction Mart
Buttersett Road, Hawes
North Yorkshire DL8 3NP
Tel: 07498 041 187
Open during auction hours

www.capstickinsurance.co.uk

J.N. & E. Capstick Insurance Consultants Limited is authorised and regulated by the Financial Conduct Authority

REETH AND DISTRICT GAZETTE LTD

St Andrew's, Grinton

HERITAGE DAY: Saturday 4th July from 10am to 4pm. There will be:

- *Textile craft displays* including spinning, weaving, rug hooking, knitting and crochet.

- *Craft Goods and Craft Stash stalls*

- *Refreshments* and freshly baked cakes and scones

- *Walk round* the historic church viewing the significant features

- *Bell Tower Tours:* the tower has had a good bit of work carried out in it last year. Tours this year will be held at 1030, 1145, 1330 and 1445, and they can be booked on the day in the church. They will cost £10 per person with a maximum of 8 per group. Children under 16 must be accompanied by an adult, and children under 10 are excluded.

- *Dogs are welcome*

If anyone would like to have a stall to help reduce their craft stash, please text Val on 07595 595151.

HYMNS and PIMMS: Sunday 2nd August at 4pm. This service will be held in the churchyard with an assembled band of musicians. Please volunteer if you would like to take part in this 'scratch' band. Contact Susan on 07969 424547 if you want take part.

Everyone is welcome to come and help us enjoy this 'out in the open air' service. We will move inside if the weather is poor.

DE-STASH SALE: Saturday 15th August 10am to 1pm. The cost is £10 per table and to arrange one contact pinktoberinthedales@gmail.com.

Proceeds are going to CRUK and the upkeep of St Andrew's church.

BRIC-A-BRAC STALL at Reeth Market on Friday 28th August

Please do come and bring and buy from the stall which will be held on Reeth Green from 9am until mid afternoon. All proceeds will go towards the upkeep of St Andrew's church.

CONSERVATION GROUP meeting at St Andrew's will take place on Saturdays 11th July and 8th August.

The bees have recently extended into a second hive. With thanks to our bee keeper Michael for his oversight and careful management. If you want to get involved in the work of the conservation group more generally then do come along to one of our monthly conservation meetings. All are welcome so please come for a bit of 'outdoor gym' [or cleaning efforts indoors] from 10am - 12 noon. Freely available drinks and scones are on offer to entice you to join us!

BAT COUNTS are at dusk on: **Wed 1st July at 9.46pm and Wed 5th August at 9.03pm.** Meet on the church path if you would like to see the bats and help us count our resident bat population.

PEW REMOVALS A sincere thank you to all those who helped with the recent removal of pews to allow for more creative use of the space in church. Particular thanks to the Fire Brigade team who helped to move the 4 longer pews from the Nave. This is the first step towards making a more accessible space for the community. Please do get in touch if you would like to help with the next steps!

Susan Allinson

PIANO TUNER
PAUL CRAY M.P.T.A
 Tel: 07798 525846




Reawaken your passion for music
paulcray.pianotuner@gmail.com



Yorkshire Dales Accountancy
 Chartered Accountants
 taxation & business advisors

Providing a broad range of accountancy and taxation services across a variety of sectors, including:

- Accounts • Business Tax • Personal Tax • VAT • Payroll
- Construction Industry Scheme • Capital Gains Tax
- Inheritance Tax • Making Tax Digital

Kiln Place, Dryden House, Market Place,
 Hawes, North Yorkshire, DL8 3RA
 E: info@yorkshiredalesaccountancy.co.uk
 T: 01959 678128
www.yorkshiredalesaccountancy.co.uk

CHAPEL GALLERY

Work from local artists and crafters
 Bespoke Workshops Available
 Coffee and cakes
 Dogs and children welcome

Open daily (except Sundays) 11am to 4pm

Burtersett Road, Hawes, DL8 3NP
 Tel: 07474 138536
info@chapelgalleryhawes.com
www.chapelgalleryhawes.com

CHARMING OLD COTTAGE IN THE CENTRE OF REETH (sleeps 6+)
 Open fire & background heating.
 Fully fitted kitchen, dishwasher, fridge/freezer
 2 bathrooms, 2 double bedrooms, 1 twin bedroom & attic play area/fourth bedroom with 3 single beds.
 Private, secure, rear courtyard area.
 Dogs welcome.
 Contact Denyse on 01325 722786 or
 e-mail denyse00@btinternet.com
www.holidaycottageswaledale.com

D. J. OLNEY
Painter & Decorator
Interior & Exterior
 Call
 07801 026 006

Half-Day Lino Workshop:
 26th June and 25th July 9am - 1pm
£35 per workshop
 LIMITED PLACES




www.lowrowinstitute.co.uk

 **ASHFORD COTTAGE DESIGN**
WWW.ASHFORDCOTTAGEDSIGN.CO.UK

REETH AND DISTRICT GAZETTE LTD

R. & W. GIBSON & SON Ltd.

**CERAMIC WALL
& FLOOR TILERS**

SHOWROOM NOW OPEN

Monday - Friday: 9.00am - 4.30pm

Saturday: 10.00am - 1.00pm
(or by appointment)

**At Borough Road,
Gallowfields Trading Estate
DL10 4SX**

Tel. 01748 - 822682 (Home)

Tel. 01748 - 821909 (Showroom)

"We cover the Dales"

Yorkshire Day Tea and Cakes
Gunnerside Village Hall
1st August 2.30 – 4.30pm



Please join us at Gunnerside Village Hall for our annual Yorkshire Day Tea and Cakes which this year is held in aid of Motor Neurone Disease Association Yorkshire Dales Branch. As usual, there will be a tempting array of homemade cakes, scones and other goodies, all washed down with a cup of tea or coffee. Donations will be gratefully received and we accept cash or card.

We look forward to celebrating Yorkshire Day with you all!

gunnersidevillagehall.co.uk or follow us on Facebook or Instagram



**OVERDALE
STUDIO
& GALLERY**

The work of
international
award-winning
Artist Martin Lever



**MARRICK
nr REETH
DL11 7LQ**

Viewings by
appointment only

07513072773
martin@artbymartinlever.com

artbymartinlever.com



Richmond Footcare
KEEPS YOU ON TRACK!

Enjoy Dedicated and Professional Foot Care that is One Step Ahead of the Rest.



www.richmondfootcare.co.uk
1 Rosemary Lane · Richmond · DL10 4DP
075 111 119 84 or scan QR Code

hpc
registered
www.hpcuk.org

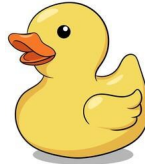


Duck Race Thanks

The organisers of the Arkengarthdale Duck Race would like to thank everyone who helped on May 4th: those who gave prizes, put ducks in the water, fished them out the other end, the ladies who made Hot Dogs and hot drinks. Without all your help we could not have raised over £1100!

Also thank you to everyone who sold ducks and raffle tickets and of course the people who bought them, and everyone who came on the day and brought children who really enjoyed it! Thank you all.

Gladys Atkinson
Church Warden, St Mary's Arkengarthdale



S.J.R Plumbing Services

For all of your domestic Plumbing requirements.
C & G/Advanced C & G Qualified
Reliable With Very Competitive Rates
Based in Reeth
01748-884036
Or **07977-297563**

SWALEDALE

'POTTING ON THE NEXT GENERATION IN THE TWO DALES'



PLAYGROUP

WWW.SWALEDALE-SEEDLINGSGR

REGISTERED CHARITY NO- 1040110

Find us on Facebook – Search Seedlings Reeth

Swaledale Seedlings playgroup

'Stay and Play' Session

Thursdays (Term-Time) at Reeth Memorial Hall
9.30am until 11:25am

Open to all children under the age of 5

£3 per child per session

Pop into a session or message us on Facebook
for further information

Keld Public Hall Centenary Sports Day

The sound of laughter drifted across the green as Keld gathered to celebrate one hundred years of its public hall, a century of stories, dances and shared moments. On Sunday 7th June the children took the spotlight, their joy spilling into the warm afternoon like the buttercups scattered across the meadows. The tug of war began with determination and delight, a line of faces set in concentration as the rope stretched between teams. Boots pressed into the grass and cheers rose from the sidelines, a reminder that competition here is always softened by friendship and good humour.



A wellie sailed through the air in a perfect arc, landing somewhere beyond



the stone wall to a chorus of laughter. The fell race followed, a blur of small figures running through yellow fields, framed by the curves of dry stone walls and the soft green of Swaledale.



The sack race brought its own kind of cheerful chaos. Children tumbled and scrambled, hair flying, smiles refusing to fade even after a fall. The egg and spoon race asked for balance and patience, though most eggs met their end halfway across the field. Between the games came quieter moments. A young boy in a flat cap, medal shining on his chest, took a triumphant bite



REETH AND DISTRICT GAZETTE LTD

of his sausage sandwich. Families leaned on fences and tractors, chatting and laughing, the rhythm of the day unhurried and familiar. The fancy dress parade added a touch of theatre. Sequins, feathers and vintage charm moved through the village as children and parents stepped back in time. The brass band led the procession, their music



echoing off the stone cottages, a sound that felt both celebratory and deeply rooted in tradition.



It was a day that belonged to everyone, to the generations who built and sustained the hall and to the children who will carry its spirit forward. A century marked not by ceremony but by laughter, friendship and the simple joy of being together in this small corner of Swaledale.

Text and photos courtesy of Gray at ScenicView Gallery, Reeth.



Christian Aid

Thank you very much indeed to everyone for their support and help during **Christian Aid Week**. The Envelope Collection in May, the Service at Gunnerside Chapel, together with the Produce Stall on the Green raised a total (including Gift Aid) of **£2,200**. Thank you all so much for your generosity.

In Nairobi's informal settlements, most parents wake knowing if they don't earn money today, their family will go hungry tonight. Fridah is widowed with children and a grandchild to protect from malnutrition - it's a precarious and relentless daily struggle.

Fridah has joined the transformational project 'Beacon of Hope' (one of Christian Aid's partners) which is training and equipping aspiring urban farmers to cultivate vegetables even in the smallest inner-city spaces. Fridah's now beginning to grow produce that she can cook at home or sell on her market stall. Thank you for helping families to learn how to farm food, wherever they live. <https://www.christianaid.org.uk/appeals>

Bric-a-Brac Stall

A Bric-a-Brac stall will be held for Christian Aid on **Friday 17th July** on Reeth Green. Contributions for the stall are welcome. If you would like any items collected please ring Susan Allison on 07969 424547 or Pauline on 01969 629723.

Pauline Oldershaw



Owners Julie and Liz have their hearts in the Dales

"Delightful Cottage, perfect base for exploring the Dales"

**-2025 Guest-
One bedroom
Langthwaite
Richmond DL11 6RE**

**Contact us for more details:
Email: ivycottagepartnership@gmail.com**

RC Jenkinson Ltd

Bespoke Building & Renovation Specialists

☎ 07968 463840

✉ info@rcjenkinson.co.uk

🌐 www.rcjenkinson.co.uk

VICTORIA DESIGN GROUP LTD
Consulting Civil & Structural Engineers

Consulting Structural & Civil Engineers

*Structural Surveys
All design work undertaken
whether domestic or commercial,
large or small*

Telephone: 01748 886717
Email: office@vdg.co.uk
Website : vdg.co.uk



Local Knowledge & Practical Advice

Your Legal Companion

- PROBATE & ADMINISTRATION
- POWERS OF ATTORNEY
- WILLS
- NURSING & RESIDENTIAL HOMES
- AGRICULTURAL MATTERS
- LAND TRANSACTIONS

Offices At: *Barnard Castle* *Heaves*
mbmcgarry.co.uk t: 01833 600 160 t: 01969 666 290
e. office@mbmcgarry.co.uk DL12 8EQ DLS 3QS

NORTHERN WALLS DRYSTONE WALLING & LANDSCAPING

Former National Trust
gardener with 20 years
experience
City and Guild Certificate in
Horticulture

www.northernwalls.com
Tel 0795 148 1239

Geoff Braithwaite Property Maintenance & Painting and Decorating

Tel: 01748 886 783
Mob: 07535 431502

Email:
geoff@mukerchapel.co.uk

Swaledale Snaps

Photographer based in Swaledale
Available to hire
(Drone shots now available)
Email: swaledalesnaps@yahoo.com

Phone number 07947 218224

Find me on

Facebook Instagram



KARL LONGDEN PLUMBING

Reeth, North Yorkshire
karllongdenplumbing@yahoo.com
Tel. 01748 889951
Mob. 07969 329893

24 HOUR CALL OUT SERVICE



REETH AND DISTRICT GAZETTE LTD



July Update

Wensleydale Community Arts Festival

Thank you to everyone who took part, helped steward events, provided performance spaces and came to watch and celebrate the arts in our local communities. Our fourth festival offered another packed programme of music, theatre and spoken word. Performance highlights included: Bee Darceey, The Pearls, A Rockin' Lid'l Duo, The 684s, Somewhere Road, Lili Bako, The Stanley Duo, Gail Barlow, Donovan Leaman, The Rodney's, Light My Choir!, Leyburn Band, and the Variety Show featuring young people from Dales Dance and The Untitled and Friends. Local Artists Lynn Ward and Maxine Ahmed led workshops. Additional events were arranged by Leyburn Arts and Community Centre, Leyburn Methodist Church and Wensleydale Camera Club.

Live Theatre: Twice Nightly - A celebration of the glory days of Variety. What a treat to spend three days in the company of Dominic Goodwin touring his one-man show to Askrigg, Leyburn and Reeth. Each performance was a delight, seeing the multitude of characters come to life on the stage and the origins of the classic variety routines that influenced the entertainers of my generation. The routines from Jimmy James and Norman Evans are stand-out moments of sheer joy that had audiences

captivated and hanging on every word. As Freddy Francis, Dom took audiences on an emotional rollercoaster of laughter, sorrow and uplifting sing-alongs and audience interaction. A great piece of one-man theatre delivered by a master of comic timing. If you missed it, the play returns this month to **The Georgian Theatre Royal on Friday 10th and Saturday 11th July.**

Cultural Passport for Young People in North Yorkshire. A brand-new initiative aimed at 11-18 year olds who would like to access arts-based opportunities. "*Creative Pathways: Laying the Foundations*" is BlueBoxt's pilot project.

There is still time to take part and share your ideas - we'll share some of the results in the August update. Register your interest even if you don't think the times shown will work for you. Activities include:

- FREE access to take part in our regular music activities - Get Musical Jam Band (Wednesdays 4.00pm-5.30pm at Leyburn Scout Hall).
- FREE Tickets to local events.
- Support to develop your creative and enterprise ideas such as organising and running your own events. Includes Mentoring support, Micro-Grants and access to our Community Equipment Bank.
- Access to gain Arts Award, Volunteering and/or Leadership qualifications.

We are delighted to be a delivery partner for the 'Cultural Passport' thanks the support of North Yorkshire Council, York City Council and the York

REETH AND DISTRICT GAZETTE LTD



culturalpassport

FOR YOUNG PEOPLE

YOUR CREATIVITY
 YOUR JOURNEY
 YOUR FUTURE

"WE HAVE AN EXCITING OPPORTUNITY FOR YOUNG PEOPLE TO DEVELOP THEIR CREATIVE IDEAS"







WANT TO TAKE PART?

ENTERPRISE SKILLS

DEVELOP YOUR CREATIVE IDEAS

Work together with industry professionals to plan and deliver youth-led projects. See your ideas come to life with access to qualifications, resources and seed funding.

EMPLOYABILITY COACHING

EXPLORE YOUR CREATIVE GOALS

Access mentoring in creative leadership, project management, event planning, and technical production to build confidence and gain 'hands-on' experience and develop future career skills.

CONTACT US TODAY TO ARRANGE AN INFORMAL CHAT TO FIND OUT MORE AND DISCUSS YOUR CREATIVE GOALS AND ASPIRATIONS

Contact Colin Bailey: 0771 21169 admin@blueboxt.org
www.blueboxt.org

Supported by David Skelth, Mayor of York and North Yorkshire and funded by York and North Yorkshire Combined Authority







Coffee Mornings at Leyburn Methodist Church Hall - Fridays 24th July, 21st August, 30th October and 27th November, from 9.30am. Pop along and enjoy a cuppa and a chat. There will also be a Cake Stall and Raffle.

Quiz night with Simon Eastwood - Friday 9th October at West Burton Village Hall, DL8 4JY. 7.00pm for a prompt 7.30pm start. Teams of 6 or come along and make a team on the night. Tickets £15 inc. two course supper. Our annual quiz is always a fun event - book early to avoid disappointment!

To find out more or book places for our events and activities visit www.blueboxt.org or contact Colin Bailey on: 01969 745810/ 07711

and North Yorkshire Combined Authority.

Leyburn Jazz Festival - The sixth Festival takes place in October. The full programme is now on sale - visit www.leyburnjazz.org or pick up a programme from community information points.

Fund Raising

Grand Prize Draw - Tickets for our Grand Prize Draw are now available. Tickets £1 each - proceeds support our core activities. Prizes include SMART TV, Bluetooth Headphones, Air Fryer and vouchers for various local retailers and eateries. The full list of prizes is available on our website or by request. Draw date: Wednesday 28th October, 2026.

REETH CORNERSHOP & POST OFFICE

- Groceries
- Beers, Wines & Spirits
- Milk, Dairy & Meat
- Fruit & Veg
- Household Goods
- Books & Maps
- Cards & Gifts

FOR ALL YOUR NEEDS

01748 884201

Leyburn-crafted memorial on its journey to National Memorial Arboretum

A national memorial to Armed Forces veterans lost to suicide began its journey from Leyburn on Friday June 12th as the Elysium Memorial was transported to the National Memorial Arboretum in Staffordshire.

Created by A.D. Calvert Architectural Stone Supplies Ltd, the memorial left the company's stone yard on Wensley Road at 10am escorted by a motorcycle convoy which was expected to grow along the route.

Two escort bikes lead the procession, with more riders joining behind in a guard of honour as the memorial travelled south.

What is the Elysium Memorial?

The Elysium Memorial is believed to be



the first memorial in the UK dedicated solely to Armed Forces veterans who have died by suicide following their service.

It was created by A.D. Calvert Stone for the Elysium Memorial Foundation, a charity that supports serving and

former Armed Forces personnel, their families and dependants, particularly those affected by mental health challenges and bereavement.

Crafted in Yorkshire

Every element of the memorial has been crafted in Leyburn using Witton Fell sandstone, sourced from A.D. Calvert's own quarry in the Yorkshire Dales.

The commission builds on A.D. Calvert Stone's history of memorial work, including the World War One Memorial in nearby Catterick Garrison, and reflects the company's role in delivering projects of lasting national significance. Allison Calvert, Operational Director at A.D. Calvert Stone, said, *"It's a real honour to be trusted with a project as important as this."*

"With strong connections to the military community here in North Yorkshire, including Catterick Garrison, we're really proud to have played a part in something we know will mean so much - not only to those close to home, but to communities across the country."

A journey of remembrance

The memorial travelled from Leyburn to the National Memorial Arboretum, with the convoy forming part of the tribute.

Organisers hope the growing bike escort turned the journey into a visible act of remembrance, bringing communities together along the route in support of the cause.

Once installed, the Elysium Memorial will become a permanent place of reflection at the National Memorial Arboretum, the UK's year-round centre for remembrance.



AD CALVERT STONE

Gunnerside Chapel

Midsummer Service

Gunnerside Chapel will be holding its annual Midsummer/ Longest Day service on Sunday 5th July, (no the date is not a mistake, Gunnerside is not constrained by such things as the calendar).

The service proper, (led by John Bainbridge of Dousgill Farm), begins at 6.30, and will be preceded by the usual Community hymn singing, be assisted by the Gunnerside Choir, and followed by tea and cakes.

All welcome.

Richard Hunt



The Dog Shed
Grooming & Teeth Care

Dog grooming and teeth care in Leyburn

Level 2&3 City & Guilds qualified
Emmi-pet teeth cleaning
Fully insured
One-to-one, quiet setting

Call Sarah on 07739 716344
or find us on Facebook!

Music Tuition for all ages with
www.colinbaileymusic.co.uk
07711 211169

Drums & Percussion; Vocals;
Piano & Keyboards; Music Theory;
'Get Musical' Workshops.

A. HOWARD JOINERY
no job too small
01748 884045
andrewhowardjoinery@gmail.com

James Peacock



**Solid Fuel
Merchant
Bainbridge**

Good quality fuels at
competitive prices.
Deliveries to Wensleydale,
Swaledale and Coverdale.
No delivery too small.

Tel. 01969 650212/650465

info@james-peacock.co.uk
www.james-peacock.co.uk



Home Run

Pet sitting, House sitting, Dog walking

I offer a friendly, personalised pet and house
sitting service in and around Swaledale.

Nicola – 07866 336924
nicola@homerundogsitting.co.uk
www.homerundogsitting.co.uk



REETH AND DISTRICT GAZETTE LTD



**SWALEDALE
MOUNTAIN
RESCUE
TEAM**



In an emergency DIAL 999 ask for the POLICE then

**Mountain Rescue / Cave Rescue /
Mine Rescue / Flood Rescue**

Charity Commission Registration No:
1201870, providing Mountain and Cave
Rescue in the Northern Yorkshire
Dales

The team is made up of highly trained
volunteers available 24/7 in any
weather, any time of the day or night.

MOUNTAIN & CAVE RESCUE

**On average we respond to between
40 and 50 calls each year.**

**In 2025 we attended 52 incidents
(including out of area Dog Searches).
Incidents 10th May to 9th June 2026
8 Incidents this edition**

07/06/2026: Incident 26: Team
water technicians called to support
Upper Wharfedale Fell Rescue with an
incident in a Gorge in Wharfedale.
Stood down while en route.

06/06/2026: Incident 25: Called by
the Ambulance Service to rescue an
injured walker near Round Howe,
Richmond. Treated on scene and
evacuated to the ambulance.

03/06/2026: Incident 24: Called by
the Ambulance Service to assist with
the rescue of an injured walker near
Hackfall Woods.

25/05/2026: Incident 23: Another
call on the Bank holiday from the
Ambulance Service reporting a
dropped 999 call for a walker with
heat stroke. A bit of detective work
and a lift from a passing farmer

resolved this call as we were making to
base.

25/05/2026: Incident 22: A busy
Bank holiday, called again in the
afternoon by North Yorkshire Police to
rescue an off-road biker who had
become stuck on a green lane. Having
tried to get themselves unstuck for
some time they eventually succumbed
to heat exhaustion. Team attended
treated and managed to assist the
casualty the couple of miles back to our
vehicle.

25/05/2026: Incident 21: Called by
North Yorkshire Fire Service to assist
with a technical rope rescue of a
casualty in the water at Aysgarth Falls.
Once the team arrived and the
Ambulance Service had re-assessed the
casualty a simple rope system up the
fire service ladder was done. Great
joint work with all agencies

17/05/2026: Incident 20: Called by
the Ambulance Service to assist with
the rescue of an injured mountain biker
above Leyburn. Evacuated by the team
to the waiting ambulance.

15/05/2026: Incident 19: Called late
at night following concerns for a group
that may have entered Crackpot Cave
and failed to return. A quick search of
the main system then found nothing.
Another quick search of Crackpot Mine
also proved negative. As more team
members arrived a search of the more
complex intestine series was
undertaken as well as a surface search
of the steep ground around the cave.
The missing persons were located safe
and well wild camping. They'd not
actually entered the cave. A good
result.

*Thanks to the following for the recent
support*

Farmers Arms Muker £83.98

Aysgarth Falls Visitor Centre £54.83

Bedale Craft Market £60.38

Cotswold Outdoors, Catterick Garrison

REETH AND DISTRICT GAZETTE LTD

£61.87
Ghyllfoot Tea Room, Gunnerside
£31.90
Bedale Tourist Information Office
£38.18

We now have a limited number of season 2026 neck tubes in stock. Kindly sponsored by Swalewoods Ltd. Available now at the Kings Head Gunnerside, The Farmers Arms, Muker and Brompton Caravan Park £10 each.



SMRT

Rope Rescue training at Downholme Quarry

SWALEWOODS LTD.

FORESTRY & ARBORICULTURE
AGENTS, CONSULTANTS & CONTRACTORS



Whether you have a fruit tree in need of pruning, a large commercial timber plantation to manage, a hedge to cut, or ancient woodland to restore, we offer a competitive service to help you get the most out of your trees!

Contact Chris Curry at Swalewoods for all tree surgery and forestry services:

M: 07528 684617

E: chris.curry@swalewoods.co.uk

W: www.swalewoods.co.uk

O: West View, Healaugh, Richmond, North Yorkshire. DL11 6UD



| Forestry Management | Stewardship Schemes | Woodland Establishment | Tree Inspection | Tree Surgery |



Hindsight

Accountants

- Bookkeeping, Payroll and VAT Returns
- Annual accounts and tax returns
- Company Formations

11 Finkle Street, Richmond, DL10 4QA

Tel: 01748 822049

Email: info@hindsightaccountants.co.uk

Martyn Leaver

Dry Stone Waller

- Farm or domestic work
- Drystone or facewalling
- Fence repairs and paving
- Misc jobs etc

Thwaite 01748 886025

Mob: 07971 456 043

RCleaning Services

DOMESTIC & COMMERCIAL CLEANING

- Reliable & trustworthy
- Insured
- Regular cleans
- One-off cleans
- EDT cleaning
- Air bnb & changeover cleans
- Offices & work spaces



Covering Reeth and surrounding areas!

Weekly / Fortnightly / Monthly Slots Available



RCLEANING SERVICES

07531561487

RCAAHHS@HOTMAIL.COM



YOUR LOCAL TRADITIONAL

CHIMNEY SWEEP

NACS & HETAS qualified & registered

We set ourselves very high standards and take every care in your home

We offer a comprehensive service

All types of chimneys swept to relevant BS Std.

Bird guards & cowls, etc. supplied & fitted

Advice freely given, problems solved

Carbon monoxide detectors

Chimney pots replaced

01765 688078

www.sweepinthe dales.co.uk

Stove Refurbishment

Stove servicing and repair

Solid fuel stove installations

Stainless steel flexible linings

Stainless steel rigid flue systems

Only high quality components are used

HETAS qualified & registered installer

STOVE INSTALLATION



Orchard Caravan Park

Idyllic setting in the market town of Reeth, nestled next to the river Swale in the heart of beautiful Swaledale.

Orchard Caravan and Camping Park is the ideal location for a tranquil and relaxing break, or for those who seek an active holiday to enjoy walking and biking.

Static Caravan Hire

Camping pod hire

Touring, motorhome & Camping welcome

Email: Office@Orchardcaravanpark.com

Facebook: @Orchardcaravanparkreeth



Glastonbury's Coming Home

There's no need to wait for 2027, you can get your Glastonbury fix right here in Leyburn in July.

You can experience the last old school Glastonbury. The year is 1993. The BBC cameras haven't arrived yet. A hundred thousand people are in a Somerset field, completely unobserved, completely themselves.

Shot in Panavision CinemaScope, *Glastonbury The Movie* captured the real festival, not the headline acts, but the stone circle at sunrise, the rave tents, the wandering poets,

Experience the Verve's very first festival appearance, Glastonbury, as it was, unfiltered, un-narrated, unlike anything else.

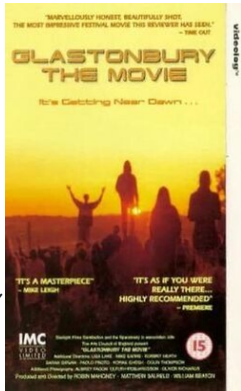
Now rebuilt in 4K for the big screen, the result is extraordinary.

Back on the big screen, thirty years on.

See *Glastonbury the Movie* on Friday 3 July at 6.00pm at Leyburn

Arts and Community Centre. Book online via our website www.leyburnartscentre.com or ring 01969 624510, tickets £6/£5.

The audience can enter a prize draw for DVD box sets, soundtrack CDs and an original 1996 quad poster.



YORKSHIRE FOOT CLINICS

Podiatry/Chiropody
 Alex Kravchenko MChS, BSc Pod (Hons)
 Nail cutting, callus, corns & ingrowing nails
 All treated in the comfort of your home
 Tel. Richmond 850020
 Or Hawes 667449
 Always insist on state registered

Spotlight on your business?



Remember, the Reeth Gazette is happy to print (no fee) a longer piece spotlighting the work and developments of our long-term advertisers.
 Contact the Treasurer for more details.

REETH AND DISTRICT GAZETTE LTD

Church Opening Times and Services in July

5th July	9.15 am	St. Mary's Muker	<i>Eucharist</i>
	10.30 am	St Joseph & Francis Xavier Richmond	<i>Mass</i>
	10.30 am	Low Row URC	
	11.00 am	Holy Trinity Low Row	<i>Eucharist</i>
	11.00 am	St. Edmund's, Marske	<i>Holy Communion</i>
	11.00 am	Reeth Evangelical Congregational	
	6.00 pm	Gunnarside Methodist	<i>Mid-Summer Service</i>
	4.00 pm	Reeth Evangelical Congregational	<i>Refreshments from 3.45 pm</i>
12th July	9.30 am	St. Andrew's Grinton	<i>Eucharist</i>
	9.30 am	St Michael's Downholme	<i>Morning Prayer</i>
	10.30 am	St Joseph & Francis Xavier Richmond	<i>Mass</i>
	10.30 am	Low Row URC	
	11.00 am	Reeth Evangelical Congregational	
	11.00 am	St. Edmund's, Marske	<i>Morning Prayer</i>
	11.15 am	St. Mary's Arkengarthdale	<i>Holy Communion BCP</i>
	4.00 pm	Reeth Evangelical Congregational	<i>Refreshments from 3.45 pm</i>
United Reformed Church Rev. Nadene Snyman Tees and Swale Pastorale 07876 707863 teesandswaleurc@gmail.com		Methodist Rev Jo Brown 01969 623818 jo.brown@methodist.org.uk	
Reeth Evangelical Congregational Church The Revd David Levell 07582 575 815 www.reethecc.co.uk		Roman Catholic Fr John Bane 01748 822 175 www.stjosephsfx.co.uk	

REETH AND DISTRICT GAZETTE LTD

Church Opening Times and Services in July

19th July	9.15 am	St. Mary's Muker	<i>Holy Communion BCP</i>
	10.30 am	St Joseph & Francis Xavier Richmond	<i>Mass</i>
	10.30 am	Low Row URC	
	11.00 am	Reeth Evangelical Congregational	
	11.00 am	Holy Trinity Low Row	<i>Eucharist</i>
	11.00 am	St. Edmund's, Marske	<i>Holy Communion</i>
	4.00 pm	Reeth Evangelical Congregational	<i>Refreshments from 3.45 pm</i>
	6.30 pm	Gunnerside Methodist	<i>Holy Communion</i>
26th July	9.30 pm	St Michael's Downholme	<i>Holy Communion</i>
	9.30 am	St. Andrew's Grinton	<i>Eucharist</i>
	10.30 am	St Joseph & Francis Xavier Richmond	<i>Mass</i>
	10.30 am	Low Row URC	
	11.00 am	Reeth Evangelical Congregational	
	11.00 am	St. Edmund's, Marske	<i>Holy Communion</i>
	11.15 am	St. Mary's Arkengarthdale	<i>Holy Communion BCP</i>
	4.00 pm	Reeth Evangelical Congregational	<i>Refreshments from 3.45 pm</i>

Church of England

Reverend Canon Caroline Hewlett. Vicar of the Parish of Swaledale with
Arkengarthdale 01748 884706 carolinejhewlett19@gmail.com

Religious Society of Friends (Quakers)

Leyburn Local Quaker Meeting for Worship is held at **Leyburn Meeting House** on:
1st, 3rd & 5th Sunday, 10.30am - 11.15am; 2nd & 4th Wednesday, 12pm - 12.30pm
Leyburn Meeting for Worship is held at **Richmond Scout Hut (34, Quakers Lane
DL10 4BB)** on: 2nd & 4th Sunday, 10.30 - 11.15am



SALES - LETTINGS - MANAGEMENT
FREE 'NO OBLIGATION' MARKET APPRAISAL AVAILABLE
UPON REQUEST

6 Bridge Street
Bedale
DL8 2AD
01677 422282

bedale@
normanfbrown.co.uk

14 Queens Road
Richmond
DL10 4AG
01748
822473/822967

richmond@
normanfbrown.co.uk

25 Market Place
Leyburn
DL8 5AS
01969 622194

leyburn@
normanfbrown.co.uk

www.normanfbrown.co.uk

PROPERTY MAINTENANCE

General Building Work, Dry Lining,
Decorating, Electrical Work, Kitchen
Fitting, Joinery, Paving, Garden
Maintenance, Roofing, pointing &
guttering work. Small jobs welcome.
Free estimates.

Contact Martin or Django
Tel 01748 886 465 Mob: 07813 715 120
Email: martinkiss1960@gmail.com

STURDY TRAVEL

INDEPENDENT TRAVEL SPECIALISTS

Now at 1 Golden Lion Yard
Market Place, Leyburn DL8 5AS
For all your travel needs, home and abroad

Call: 01677 422826
Email: robert@bakewelltravel.co.uk



Part of Bakewell Travel



Lady Interior Decorator

Painting & Decorating, Competitive rates
Established 30 Years: Based in Richmond
Free estimates, Friendly advice, Est 29 years

Call Yvonne on: 07838378836
Email: yvonesdecor@hotmail.co.uk

REETH AND DISTRICT GAZETTE LTD

Wensleydale Concert Series

July is the only month this year when we have two concerts. The first is on Saturday July 4th and is at Carperby Village Hall. Note this venue is smaller than St. Andrew's Church and so tickets are more limited. We are really pleased to invite two internationally established musicians (who just also happen to live locally in Richmond): lutenist Jacob Heringman and viol player Susanna Pell. Together Jacob and Susanna perform as the duo Pellingman's Saraband and their repertoire features early music by some of the great composers of the Renaissance and Early Baroque periods. They have been musical colleagues for 37 years and have both enjoyed distinguished careers; Jacob as a soloist and with many prominent period ensembles; Susanna as a freelance performer and member of the pioneering groups: Fretwork and The Dufay Collective. This will be a very special event in an intimate space where you can experience their performance from close up.

The second concert of July is on Saturday July 18th at St. Andrew's Church, Aysgarth and

features the superb pianist Tyler Hay (right) performing music by Chopin, Rubinstein and Liszt - including the monumental and era defining work by Liszt - his Grand Sonata. Tyler has won numerous



international awards and prizes and has a growing catalogue of acclaimed recordings. Pianist magazine described his playing as

"Like a man possessed ... with technique to spare".

Tickets for both concerts are £18 when bought in advance, £20 at the door, and for under 18s/Full Time Students there are £1 tickets. Both concerts start at 730pm. Full concert details and tickets are at our website www.wensleydaleconcertseries.co.uk

 ALL OCCASIONS CATERED FOR
HOT & COLD FOOD OPTIONS
CAKES & TRAYBAKES

Contact Anne & Claire:
07837 805413
clairewilliams10@hotmail.com

 
Find us on Facebook & Instagram
@EASurtterCatering

Langthwaite - Arkengarthdale
RED LION INN
Free House
Real Ales – Bar Snacks
Books & Maps
Tel. 01748 884218


Secretary wanted for the Festival

Swaledale Festival are looking for a Secretary to join our small and enthusiastic Board of Trustees. The main duties include liaising with Companies House and the Charity Commission, keeping abreast of relevant legislation, preparing the Board agenda for the monthly Board meetings, and taking the Minutes.

The Board is made up of volunteers who support this much-appreciated Festival, which brings a wide range of music, the arts, and walking, to this area of the Yorkshire Dales for two weeks each year, beginning on the late Spring Bank holiday (23 May – 6 June 2026).

For an informal conversation in the first instance, please get in touch with our Chairman, Dr. Susan Miller – email chairman@swalefest.org, or phone on 01748 886358.

REETH AND DISTRICT GAZETTE LTD

Keld Heritage Centre Events for July and August

4th July - Needle Felting Sheep Workshop 10.00 - 16.00 Keld Heritage Centre

Join Clare Gaukroger and learn how to needle felt your own charming 10cm sheep with breed-specific wool. No experience necessary. Please bring packed lunch, or sandwiches/salads are available to order, pay on the day. Refreshments provided.
Charge: £50 pp

12th July - Wild Flower Talk & Walk 10.00 - 16.00 Keld Heritage Centre

Join Martin Hughes & Sue Knight, on a combined talk and walk which will cover the basics of wild flower identification, followed by a field walk to spot Swaledale wild flowers.

Please bring packed lunch, or sandwiches/salads are available to order pay on the day.

Walk approx. 3 miles. Easy going and on footpaths.
Charge: £15 pp

2nd Aug - Great Sleddale Hurricane Crash Site Walk 10.30 - 16.00 Approx 9 miles moderate/hard)

Visit the isolated crash site of a WWII Hawker Hurricane in Great Sleddale. Please wear appropriate footwear as no bridges and need to cross the beck.

Please bring packed lunch and drinking water. Dogs welcome on leads.

Note: meeting point B6270 at the turn off to Ravenseat approx. 3 miles west of Keld.

(what3words://snoozing.embers.outs)
Charge: £8 pp

16th Aug - Watercolour Landscape Painting Workshop 10.00 - 12.30 Keld Heritage Centre

Learn to paint watercolours in a relaxed environment inspired by the stunning views from the Institute Upper Room. Suitable for all abilities.

Start with warm-up exercises before putting into practice in a full watercolour landscape painting to take home with you at the end of the session.

Refreshments provided.
Charge: £50 pp

Full details and tickets available via keldheritage.co.uk or our Facebook page.

Email helenguy47@gmail.com

Booking essential due to limited places for some events.

M. GUY - PLUMBING

For all your plumbing requirements
AGAS & RAYBURNS SERVICED
kathrynguy@designermakersmarket.co.uk
Tel: 01748 - 825640

R.L.D ROOFING & BUILDING LTD

Covers all aspects of roofing and building
0737 607 3816 07597 621 287
RLDroofing@mail.com

R.L.G GROUNDWORKS CONTRACTORS LTD

0737 607 3816

info@rlggroundworks.co.uk
RLGgroundworks.co.uk

REETH AND DISTRICT GAZETTE LTD

The Charles Bathurst Inn ARKENGARHTDALE

Outstanding fresh food served in a warm & friendly atmosphere.
19 en-suite bedrooms with amazing views.
Available for dinners, weddings & meetings.



**FOR FURTHER DETAILS
OR TO RESERVE A TABLE**

Telephone: 0333 700 0779
Website: www.cbinn.co.uk

THE OLD TEMPERANCE BOOKSHOP

Reeth, Richmond, DL11 6TE

Tel. 01748 884185

Christian books & cards,
Fairtrade crafts and food



Beside the village green in Reeth, we are 50 yards up from Reeth Evangelical Congregational Church

Opening times:

1.30pm - 4.00pm Mon, Thurs, Sat

10.30am - 4.00pm Fri

**CLOSED on Mondays 13 & 20,
and Thurs 23 – Sat 25 July.**

The Punch Bowl Inn

Outstanding fresh food served in a warm & friendly atmosphere, plus 12 cosy en-suite bedrooms with stunning views of Swaledale.



**FOR FURTHER DETAILS
OR TO RESERVE A TABLE**

Telephone: 0333 700 0779
Website: www.pbinn.co.uk

two dales bakery
reeth

ARTISAN BAKERY & CAFÉ

Delicious breads and pastries
Food served all day including vegetarian/vegan options
Well behaved dogs welcome
Visit us at the Reeth Dales Centre,
Silver Street, Reeth,
North Yorkshire, DL11 6SP
Please see our website for current opening times
www.twodalesbakery.co.uk
01748 905001

JAZZ NIGHT

THE STATION
CAFÉ | BAR
RICHMOND

**Saturday 8th
AUGUST 2026
@ 7.30pm**

Looking for the perfect summer
vibe? Join us for an evening of
smooth, soulful, and
refreshing jazz with the
The Good Vibes Trio
whilst you enjoy a delicious
two-course evening meal.

John Hunter—Piano / MD
Jane Hunter—Vibes
John Padfield—Sax/Clarinet



£30.00 per person (drinks not included)
Call 01748 825967 or email
reservations@thestation.co.uk to book

Dales Heart and Craft

Creativity, community and conversation

Join our friendly creative sessions
Every fortnight - July dates:

Tuesday 14th and 28th - Low Row - The Institute - 10am
Tuesday 14th and 28th - Arkengarthdale - The Hub - 2pm
Tuesday 7th and 21st - Muker - Public Hall - 10am
Thursday 9th and 23rd - Reeth - Memorial Hall - 2pm

Free - Everyone Welcome!

Our workshops are relaxed, sociable, led sessions with regular guest artists. No experience or talent needed - all materials are provided. Come for the creativity, stay for the chat, and enjoy a cuppa (and usually a biscuit or two!) in good company.

*Free transport available through Reeth & District
Community Transport*

For more information:

Call 07513 635175 or Lowrowinstitute.co.uk

Funded by The National Lottery 

FLOOR TILES CLEANED & SEALED

Kitchens Conservatories Hallways Bathrooms Fireplaces

CLEAN & SEAL

Tel: 01748 811452 / Mobile: 07961 460020

Your Floor Tiles Cleaned & Sealed No Fuss No Hassle No Mess All Tiles

Sandstone Terracotta Travertine Slate Flags

Limestone Encaustic Ceramic Marble Vinyl

John Lord

johngrahamlord@gmail.com

T.A.R. Longstaff

**Mobile Hydraulic hose
repairs in Reeth and
surrounding areas,
anywhere anytime.**

**Also mobile on site
welding.**

**Tel Percy on
07889725349.**

REETH AND DISTRICT GAZETTE LTD

SWAAG

It is with some trepidation that I write this in early June looking out the window at the rain. We will begin our archaeological investigation (a dig) in two days' time on a potential Iron Age roundhouse in Grinton. There is even some suggestion that it might be a Roman Signal Station although I think that unlikely as the nearest known Signal Stations are in Teesdale along the line of the A66, with no line of sight to here. I will give a preliminary report on what we actually find in the August edition of the Gazette.

Our next talk later this month has a local history theme. Local historian Reuben Frankau will present an illustrated talk about "The Bus up the Dale". Older residents in this area may remember Percival Brothers (Coaches) Ltd, an historic local family firm that provided vital links to Richmond for over 50 years before closing in 1971. Developing from a horse-drawn service, it became a cherished Swaledale institution.

The talk will be on Tuesday 14th July, 7:30pm in Fremington Village Hall; non-members welcome with a suggested donation of £5. Check our website for details and in case of any change: <https://new-swaag.org/our-events-dairy/>

After that we have a summer break with no talk in August. In September John Castling of Durham University will talk about the archaeological work at Auckland Castle, Bishop Auckland, which he coordinates along with the work on the nearby Binchester Roman

Fort and which featured on the BBC series 'Digging for Britain', recently.

Alan Mills
SWAAG is a registered
charity no. 1155775



M.W Waste Services
Environmental & Drainage Specialists

Septic Tanks Emptied & Cleaned
Blocked Drains Cleared Fast
Grease Traps & Interceptors Emptied
Soakaways Rebuilt & Repaired
Gully Emptying & Street Cleaning
Refuse Collection
Septic Tanks Installed
High Pressure Drain Jetting
Mobile Steam Cleaning
Sewage Plant Maintenance
Industrial & Domestic Work Carried Out

Low Hang Bank Depot
Melsonby
Richmond
North Yorkshire
DL10 5NQ

Tel: 01325 377860/377850
24/7 Call Out
[Http://www.mwwaste.co.uk](http://www.mwwaste.co.uk)

Clear Your Blocked Drains Fast With Our High Pressure Jetter
Free Quotes & Estimates

The Gazette is online:
www.2dales.org.uk

REETH AND DISTRICT GAZETTE LTD

August 12th - Eclipse of the Sun!

Want to see a solar eclipse in Swaledale this coming August? Join members of the Reeth Informal Astronomy Group in Keld to witness this impressive event.

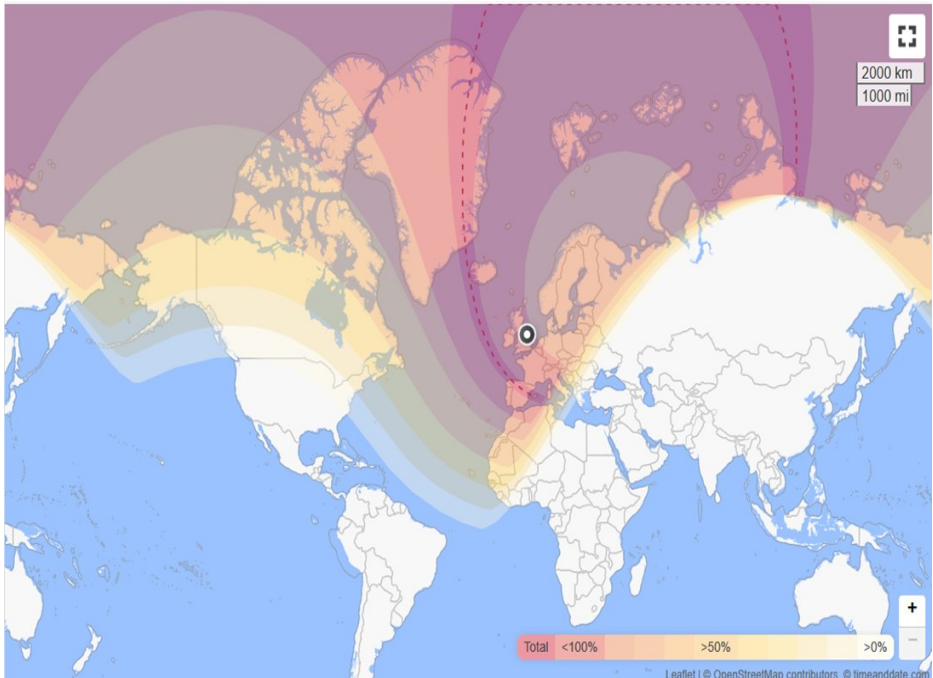
Just under a century ago, on 29th June 1927, there was a total eclipse of the Sun visible from the Yorkshire Dales. Sharp eyed readers may have noticed the plaque on the wall in Richmond recording the event - when the centre line of the eclipse passed through the town.

This August, just over 99 years on, there will be another eclipse visible from the Dales. At about 6.12 pm on

12th of August, the Moon will start to move in front of the Sun. By 7.08 pm it will cover approximately 92% of its disk. Although we won't be able to see a total eclipse from here, a 92% dimming will be very noticeable.

If you want to see the total eclipse, you will need to travel to Eastern Greenland, the West of Iceland or - more realistically - Northern Spain. The map below shows the path of the eclipse - you can see the map in full and find out more details at the website timeanddate.com, who have given permission for their map to be reproduced in the Gazette. The dotted line is the centre line of the eclipse - this is where the sun will be totally obscured for the longest time.

Mike Evershed



MICHAEL GUY ELECTRICAL

FULLY QUALIFIED ELECTRICIAN

Over 20 years experience working in the dales in all areas of electrical work.

Some of my services include:

Complete rewires | Electrical installation condition reports | Electrical vehicle charging points | Additional & alterations to socket & lighting points |

Replacement of storage heaters to modern eco panel heaters.

Contact Michael :

07980 130017

Mail: info@michaeltguyelectrical.co.uk

Website: Michaelguyelectrical.co.uk

APPROVED ROINTE HEATER INSTALLER

NICEIC APPROVED CONTRACTOR



Serving food between 12pm & 8pm everyday

Free to join loyalty scheme
No Table Reservations

Sky Sports on 3 TV's
Pool Table & Dart Board
Pet Friendly
Monthly Quiz
Occasional Live Music

Warm Welcome

Cask Marque accredited
& CAMRA discount

www.thebuckreeth.co.uk
Tel 01748 884 545
Email stay@thebuckreeth.co.uk

Hudson House Centre Reeth

Owned by the Community of
the Two Dales

Community

- Gallery
- Learning
- Library
- Orchard
- Transport

National Park Centre

North Yorkshire CC

Police

Richmondshire DC

Swaledale Festival

Business Forum

Hot drinks vending machine

Internet & WiFi

Local notices & information

Meeting Rooms

Tourist Information & Shop

Open all year

7 days a week

See website for times

Silver Street Craft Unit's
managed by Hudson House.


For all enquiries contact
Jill May.

01748 884485

www.hudsonhouse.info



Low Row Open Gardens
Sunday 5th July 10.30 – 4pm
Explore scenic Dales gardens then
pause for tea and cake!
Tickets and maps £5 per adult
on the day from Low Row Institute
Refreshments and plants for sale at the Institute
Sorry no dogs




Newcastle Building Society
Principal Office
1 Cobhill Park Way
Widnesend
NE28 9EJ
www.newcastle.co.uk

Join Tim Larmour, manager from the Hawes Branch of Newcastle Building Society, for a
Locks, Stocks and Scams Talk.

An informative and engaging session providing a forum for judgement free conversations and questions and a practical guide to spotting fraud and keeping information safe online.

Wednesday 22nd July at 11 am
Hudson House
DL11 6TB
Free and open to all

Connecting our communities with a better financial future.
Principal Office: Cobhill Park Way, Widnesend, NE28 9EJ | Chief Executive: A.S. Singh BSc
Newcastle Building Society is a member of the Financial Conduct Authority (FCA) and the Prudential Regulation Authority (PRA). Newcastle Building Society is authorised and regulated by the Financial Conduct Authority (FCA).
Member of the Building Society Association (BSA) and the Financial Ombudsman Service (FOS).
BSA: www.buildingsociety.org | FOS: www.fos.org.uk



L3 - Normal



CALVERT & CO
CONSTRUCTION
— SWALEDALE —

Over **25 years** experience working in the dales,
time served and fully qualified.

All aspects of building work carried out by a
friendly and **reliable** team.

Contact Andrew:

- Phone: 07837955869
- Email: andrew@calvertandco.uk
- Website: www.calvertandco.uk

3D Cross-Stitch



The Nutmeg Gallery
Reeth DL11 6SP
(Reeth Dales Centre, off Place Hill)
Open April to October
Tue, Wed, most Thurs and some Saturdays.
During the winter and for other times ring
01748884926 or visit
www.3dcrossstitch.co.uk

Leyburn Arts and Community Centre

July is here and we've had a glimpse of summer sun and heat, even if not quite as much as some areas of the country! The volunteer gardeners have been busy as the weeds have gone mad - if you have some spare time they would appreciate some help (the gardeners not the weeds.) All Volunteers receive half price entry to our events and National Theatre Live type screenings and of course as much tea/coffee as they wish, sometime even with biscuits.

First an August event that we are so pleased to offer; The People's Emergency Briefing, which has attracted a lot of attention. The film is based on the National Emergency Briefing in Westminster, featuring a line-up of experts, including Chris Packham, leading scientists, a former general and Jennifer Saunders, discussing the urgent need for action against climate and nature breakdown. It aims to provide a comprehensive overview of the crisis & potential

solutions to address it. The date is Thursday 6th August at 7pm and more information will be available on the website by the time you read this. We expect and hope this will be popular and of interest to many in our beautiful Wensleydale/Swaledale area. Please book early.

Two great Friday screenings are offered this month, Glastonbury the Movie, 30th Anniversary Cut, with a raffle to win numerous DVD box sets & sound track CDs plus a couple of original quad posters; & Epic - Elvis Presley in Concert, featuring never before seen footage & recordings (something to look forward to for us oldies who still consider him the best!) Other events in July are Six Cats at Leyburn, performed by John Anderson; Verdi's Aida from Sydney Opera House; a car boot sale at the Auction Mart in aid of Marie Curie which we are supporting by offering bacon butties, books & jigsaws, home-made jams & marmalades; and a fundraising Strawberry Tea in our garden on Saturday 1st August.

Middleham Quilters are happy having their regular sessions every Monday in

the Centre and are open for new members, experienced or just beginners when help can be given to this relaxing hobby. The Digital Support & Community Support mornings offer free tea/coffee & biscuits and private sessions can be booked if required. Call 01969 624510.

Jeannie Bishop

  LEYBURN ARTS AND COMMUNITY CENTRE 	
<p>Friday 3 July 6pm Glastonbury The Movie: The 30th Anniversary Cut (12A) 1hr 30m</p>	<p>Saturday 4 July 7:30pm E5 Six Cats At Leyburn!</p>
<p>Friday 10 July 6pm Amelie (2001) (15) 2hrs 02m</p>	<p>Thursday 16 July 7pm E12/E6 Cinema Live: Verdi's Aida</p>
<p>Friday 17 July 6pm The Spin (15) 1hrs 32m</p>	<p>Saturday 25 July 10am to 4pm Marie Curie Fundraiser</p>
<p>Friday 24 July 6pm North By Northwest (12A) 2hrs 16m</p>	<p>Coming Soon</p> <ul style="list-style-type: none"> • Saturday 1 August 2pm-4pm E7.50 - Fundraising Strawberry Tea in the Rear Garden • Thursday 13 August 7pm E12/E6 - Andre Rieu's Summer Concert: Viva Maastricht! • Saturday 15 August 7.30pm E15/E7.50 - Holly Taymar Sings Eva Cassidy • Thursday 20 August 7pm E12/E6 - Cinema Live: Puccini's Turandot
<p>Friday 31 July 6pm Epic: Elvis Presley in Concert (12A) 1hr 36m</p> <p>Coming Soon</p> <ul style="list-style-type: none"> • D J Ahmet • California Schemin' 	
<ul style="list-style-type: none"> • You can book and pay online via our website. • Our licensed cafe/bar opens 30 minutes before all events and screenings. • For a full list of what's on, head to our website or give us a call. 	
 <p>The Old School House, Richmond Rd, Leyburn DL8 5DL</p>	 <p>www.leyburnartscentre.com</p>
	 <p>01969 624510</p>

Dales Police Report



**Monthly Police Report 23rd March
30th May 2026**

Please accept my apologies that you have not received a monthly Police report since February/March time. I have gone back to the 23rd March so hopefully this includes the time that has been missed.

We do not report crimes whereby victims could be identified, for example Domestic Violence or Harassment although they are included in the totals below. Leyburn Police Station covers the areas of Arkengarthdale. Swaledale from Hudswell up to the county border, Wensleydale from the Hambleton to Cumbria borders, Coverdale and Bishopdale.

20- Suspicious Circumstances (Door to door sellers/Vehicles parked etc).

1 - Anti-social Behaviour (Nuisance).

0 - ASB (Personal).

0 - ASB (Environmental).

8- Road Traffic Collisions (Minor).

4- RTC (Serious).

4- Wildlife/Animals.

21- Road related (Manner of driving/vehicles without tax /possible OPL).

12- Concern for Safety.

13 - Violence.

4- Civil Disputes.

4 - Stalking/Harassment.

6 - Stolen Motor Vehicles.

4 - Fraud Forgery (online/phone).

7 - Theft.

8 - Criminal damage.

North Yorkshire Community Messaging is a free email messaging service from North Yorkshire Police and the office of the Police and Crime Commissioner, providing news and updates on policing matters relevant to you and your community. You can sign up to the messaging service by visiting the NYP site.

The Neighbourhood Team will continue to attend Town/Parish meetings and Community drop ins/events duties permitting. Please get in touch if there are any events you would like us to attend. Also please make contact via email if there are any issues and you don't see us at a meeting.

**PC355 Heather Campbell.
PCSO 5550 Tracie Taylor-Page
PCSO3521 Di Smith.**

Dales Police



Your Local Neighbourhood Team are:

PCSO3521 Diane Smith,
PCSO5550 Tracie Taylor-Paige,
PC355 Heather Campbell.

Email:
diane.smith@northyorkshire.police.uk

Useful Contact Numbers

Highways 03001312131

NHS 111

Local Dog Warden 01748
829100

Action Fraud 0300 123
2040



MUKER SHOW 2026

WEDNESDAY 2ND SEPTEMBER
FROM 10.00 AM

Join us for the 119th Muker Show. Prize Swaledale Sheep, Stunning Fell Race, Craft Tent, Trade Stands, Dales Ponies, Muker Silver Band, Children's Fancy Dress & Races, and the much-loved Traditional Singalong outside the Farmers Arms Pub

PAY AT GATE
£10 ADULTS, CHILDREN UNDER 15
FREE
BUY ONLINE FROM TICKET TAILOR
OR WWW.MUKERSHOW.CO.UK



REETH AND DISTRICT GAZETTE LTD

Leyburn & District u3a

The Mississippi River by Ken Robertshaw

On Friday 17 July Ken Robetshaw will describe his expedition to travel the Mississippi River from source to sea, without a support crew. It took 58 days and saw him and his paddle partner, Grace, endure remote locations, negotiate challenging terrain and avoid huge barges and ships. With infrequent availability of places to stop and eat they carried everything they needed, and little else, and explored parts of the USA not visited by many people, including their own citizens!

Ken, a retired Police inspector, decided that he did not want to play bowls, potter in the garden or watch daytime TV so engages himself in less appropriate age related activities. From fulfilling a boyhood dream of driving a dog sled team across the Arctic regions of Europe, to riding motorcycles in far flung places such as Nepal, Rajasthan and Bhutan he uses his adventures to raise funds for the Theodora Children's Charity through illustrated talks and publishing books detailing his travels.

Visitors and new members are always welcome. Doors open at 10.00 for 10.30 at Leyburn Arts and Community Centre, Richmond Road, Leyburn DL8 5DL. For details contact Membership secretary www.leyburn.u3asite.uk

Anyone for whist?
Mondays 1.30 pm
Quaker Close flats, Reeth



Bellerby Open Gardens 2026

Sunday July 5th
11:00am - 4:30pm
£5 per adult; children u16 FREE

Come and see the finest gardens in Richmondshire's Best Kept Village of 2025, spot the scarecrows and sample Bellerby's legendary refreshments.



Bed and Breakfast, Reeth Road near Downholme. Spacious en-suite rooms in a peaceful location with panoramic views of Swaledale.

Traveller Review Award 2026
ellertonlodge13@yahoo.com
tel 07812 632459



CHANGING YOUR CAR

IT'S A CINCH AT DORANTS

CHOICE OF THOUSANDS

PART EXCHANGE WELCOME

AND WE'RE LOCAL

SIMPLES

Jed Collins, Bridge Garage, Reeth
01748 884245

REETH AND DISTRICT GAZETTE LTD



TALL TREES LANDSCAPES

HARD LANDSCAPING
TREE SURGERY
GARDEN DESIGN
GARDEN MAINTENANCE

Fencing & Gates, Decking, Walling, Paths
Driveways, Groundworks, Drainage
Gabions, Sleepers, Turfing
Tree Planting, Pruning, Removal
Hedge Cutting, Stump Grinding.

If it's not on the list, get in touch
anyway and we will try our best to help.

Phone Tom Hollingworth on
07929322227

Talltreeslandscapes.co.uk
Talltreeslandscapes@hotmail.com

FRIENDS SCHOOL AT REETH TRUST

Charity number 529603

Grant Applications for the
Academic Year 2026 -2027

Small grants are available to local
young people, under the age of
25, attending **full-time** further
education towards the cost of their
studies. (Not transport costs)
Applications need to be received
as soon as possible and before
30th September 2026.

For an application form, please
contact:
dotwillis55@gmail.com



THE KINGS ARMS HOTEL, REETH

Informal high dining

10 ensuite | À la Carte | bar | Sunday menu
served from 12:00 till 8:45

Muddy boots and paws welcome

www.thekingsarms.com

**Minutes of the Annual
Melbecks Parish Council
meeting
held on Thursday 14th
May 2026**

Present: Councillors Alderson, Calvert, Bowe and Strafford with Councillor Silver chairing. North Yorkshire County Councillor Yvonne Peacock was also present.

Clerk: Miss N. Adams.

Election of Officers: Chair: Councillor Silver was elected as Chair and Councillor Bowe was elected as Vice-Chair

Matters Arising.

a) Waste collections - to be discussed at the end of the meeting.

Finance

a) Audit

(i) Annual Internal Audit Report: The council noted the Annual Internal Audit Report which has been completed by internal auditor, Richard Hunt, who has examined the accounts of Melbecks Parish Council for the period 1st April 2025 to 31st March 2026 and was satisfied that they provide a true and accurate representation of the Council's business and compliance with the various requirements over that time.

ii) The Annual Governance Statement (Section 1): was unanimously approved by the Council and signed by the Chair and Clerk.

iii) The Accounting Statements (Section 2): were considered and approved and signed by the Chairman and Responsible Financial Officer/ Clerk.

iv) The Council unanimously approved the Certificate of Exemption, and this

was signed by the Chair and the Responsible Financial Officer/Clerk.

b) The council reviewed and unanimously adopted the Financial Risk Assessment.

c) The council reviewed and approved the Financial Statement.

d) Orders to pay - Gunnerside Village Hall £60, Low Row Institute £80, Yorkshire Local Councils Association £196, Website £842.40 to Activre Council

Highways

a) Highways Reply:

There were no highways updates.

b) Peat Gate, issues with cattle grid and road falling away. It was agreed for NYC Councillor to include this issue in her meeting with Highways Officer, Paul Randall, which is taking place in June. Councillor Silver to attend if possible. NYC Councillor Peacock will investigate and let councillors know.

c) The clerk to report potholes opposite Strands House, and two at Woodend and Trough House.

North Yorkshire Council

a) Household Waste Recycling: Residents must now register to use recycling facilities.

b) Waste collections: NYC Councillor Peacock advised that the new bins are being allocated to households by September 2026, with one bin to be provided for paper and cardboard, one for bottles and cans, and one for rubbish. Food waste bins are not being considered currently. Less frequent collections will be taking place with black bins emptied fortnightly and recycling monthly. A consultation will take place first and residents should expect to receive a letter shortly. Councillors raised that there could potentially be issues with the number of

REETH AND DISTRICT GAZETTE LTD

bins, particularly on the pasture land. This can be raised as part of the consultation process.

c) Updated Parish Charter: Councillors noted receipt of the Updated Parish Charter.

YDNPA

a) Protected Tree Applications: Calvercote, Gunnerside, fell 1 x eucalyptus - no comments or objections were raised.

b) Protected Tree Decisions: Hazel Garth, Low Row, remove 1 x sycamore, (approved, replant recommended) no comments or objections were raised.

c) Planning Permission: Application to vary planning permission R/01/100D to permit the continuation of the Scott Trial motorcycle event on land at Arkengarthdale, Gunnerside and Reeth Moors and surrounding area: The council raised no comments or objections regarding this planning application.

d) Listed building consent - Listed building consent for repointing of the external stonework using a traditional lime mortar mix on a like-for-like basis in terms of joint finish and appearance at Pursglove Cottage, Brocca Bank, Feetham, DL11 6PS - R/05/128C/LB

e) Listed building consent for replacement of existing windows with new like-for-like double glazed units incorporating slimline glazing and replacement of existing doors with timber doors, including traditional ledge and brace and stable door designs, to complement the historic character of the property at Pursglove Cottage, Brocca Bank, Feetham, DL11 6PS- R/05/128D/LB

Any other business
a) Reeth Surgery update

NYC Councillor Peacock provided an update on the progress so far and it was noted that another meeting of the Parish Council working group is taking place on Monday 18th May 2026 at 6.45pm at Grinton. Councillor Bowe to attend.

b) Dog waste bin, Gunnerside: It was agreed for Councillor Silver to ask Geoff West to look at this and provide a quote for repair.

c) Councillor Bowe raised an issue with the public toilets in Gunnerside which are now being cleaned by contractors rather than North Yorkshire Council. Previously, the cleaners would also empty the dog waste and recycling bins in the village at the same time but this is now not happening. NYC Councillor Peacock will investigate this and report back. Councillor Peacock also confirmed that there are no plans to upgrade the toilets in Gunnerside and increase the cost, which is happening at some other toilets across the area. It was suggested that a general waste bin could be considered for the village.

d) It was suggested that the Parish Council could make a donation towards the cost of fuel for the generator at Gunnerside Village Hall as it has funded this at Low Row Institute. Councillors Bowe and Silver will contact Richard Lewis regarding different options.

e) The clerk was asked to report that the street light number one in Low Row at Peep O' Day has no number on the sign. The clerk will report this to the council.

Date of next meeting
The next meeting will be on Thursday 16th July 2026 at 7.30pm at Low Row Institute.

A.J. CLACHER LTD

Established 1961

PLUMBING & HEATING ENGINEERS

- Oil, Gas, LPG and solid fuel central heating installations

- All aspects of plumbing and heating installations



- Specialists in boiler servicing and repair

- Oil tank installations



- Landlord Gas Safety Inspections

- Bathroom installations and Plumbing



- Air and Ground Source heat pumps

Tel 01325 468372 Email info@ajclacher.co.uk

www.ajclacher.co.uk



G E BROWN & SON BUILDING CONTRACTORS

All Building Work Carried Out
Damp Proof Course & Timber Treatment
Specialist Joinery Work
Work carried out by time-served qualified craftsmen

Email: gebrownson@f2s.com
Telephone: 01748 886356

Remedial Massage

*musculoskeletal conditions & injuries,
headaches, stress and anxiety*

Manual Lymphatic Drainage

lymphoedema, post-surgery

Jennifer Thursfield NAMMT
MLDUK CNHC

Tel: 07889 546608 • Based in Richmond

jtremedialmassage@gmail.com

www.jtremedialmassage.co.uk

Sarah Louise Olney

Mobile Hairdressing

Facials

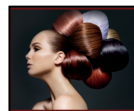
Massage

Reflexology

Indian Head Massage

Cruelty free products

Cruelty free hair colour



Reeth 07875 926946

REETH AND DISTRICT GAZETTE LTD



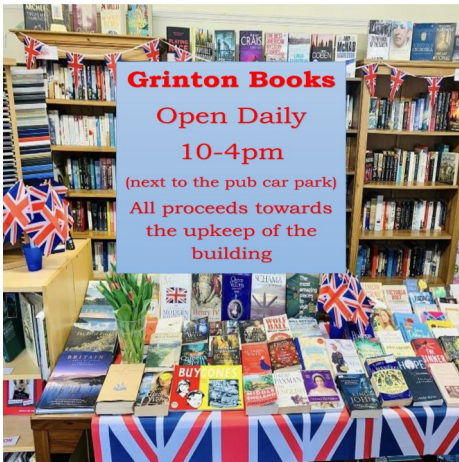
Reeth Arts Festival

We would like to extend huge thanks to both 'Landmarc', and 'Stay in Swaledale' (& the Nickerson Family) for their kind offers of sponsorship that have been accepted by the festival, meaning it is now fully sponsored this year!



We don't need any additional financial support now for this year. The festival's organisers and all the Artists exhibiting this year are so grateful for the community's support!

Come and enjoy the free event on the 5th September, listen to and enjoy some fantastic music, peruse the stalls, and join in with the activities - in the field next to the show field.



Dementia Forward's Tan Hill Challenge Walk

Sunday 26th July
 Registration at 8:30am
 Tan Hill Inn, Arkengarthdale, Richmond, DL11 6ED

Sign up for our 15-mile sponsored walk to raise vital funds for your local dementia charity

The circular route starts and finishes at the famous Tan Hill Inn, Britain's highest pub at 1,732 feet above sea level. The walk takes in stunning scenery, including savasot (home to the Yorkshire Shepherds), Keld, Swinner Gill and part of the Pennine Way.

Entry £20
 including Breakfast Sandwich, Goody Bag and T-Shirt

To book your place, use the details below or scan the QR code:
 ☎ 01765 601224 🌐 www.dementiaforward.org.uk ✉ amy.senior@dementiaforward.org.uk

In aid of **Dementia Forward** Kindly sponsored by **HARRIS IRWIN ARCHITECTS**

Registered Charity Number: 1148225

Yoga Class

Tuesdays

09.30am – 10.30am

Reeth Memorial Hall

Contact Debbie for details

07707683317

yogadebbie@hotmail.com

DAN WALLER CONTRACTING SERVICES

- Agricultural And Domestic Dry Stone Walling
- Grant Walling
- Fencing
- Landscaping
- General Maintenance And Repair Work
- City and Guilds Qualified Joiner

Mobile: 07722 489518 Email: danwrw@outlook.com



Sustainable
Swaledale

Sustainable Swaledale

Fundraising appeal launched to save Red Squirrel sanctuary near Hawes

The Woodland Trust has launched a £5m fundraising campaign to acquire 348 acres (141 hectares) of Snaizholme Valley, near Hawes, which could help support the native red squirrel population. The land, where red squirrels already roam and forage, has been temporarily secured, giving the charity two years to raise the money. According to Woodland Trust research, the UK population of red squirrels has dropped from around 3.5 million to around 287,000, with only 39,000 of these remaining in England. The new land includes commercial conifer plantations and an area of hillside nestled between areas the trust already owns, and has been restoring through large-scale tree planting since 2023. *Read more here:* <https://tinyurl.com/mr3pwnpe>

New investment announced to support people, places and nature across Yorkshire Dales National Park

A wide range of practical projects to improve access to, support communities in and enhance the natural environment of the Yorkshire Dales National Park have been approved as part of the YDNPA 2026/27 Action Plan. These include more opportunities for young people to upskill and connect with the outdoors; the continuation of the highly successful Farming in Protected Landscapes programme for a further

three years; new programmes to support farmers and land managers adopt sustainable and regenerative farming practices; and new investment to create and extend important, wildlife-rich habitats and support species recovery. *Read more here:* <https://tinyurl.com/sry5myzc>

River Swale awarded Designated Bathing Water status

The River Swale at Richmond, North Yorkshire is one of 13 sites to be awarded Designated Bathing Water Status by Defra - a fantastic achievement for members of local campaign group, Save Our Swale (SOS) who have been working on this for more than two years. This means that the Environment Agency now has to regularly test the river water quality for bacteria between May 15 and September 30, and publish their findings, allowing the public to make an informed decision about using the river. If found to be 'poor' or 'sufficient', officials will also have to investigate pollution sources and take steps to improve the water quality. *Read more here:* <https://tinyurl.com/3mh4ycxd>

Blossoming amongst spoil heaps: The plants that thrive in heavy metal-polluted soils

Calaminarian grassland is a rare habitat where plants thrive in soils contaminated by heavy metals. But should these toxic meadows be protected or allowed to fade away? Dr Ruth Starr-Kedde, a botanist at the North Pennines National Landscape and lead botanist on the Tees-Swale: naturally connected project, has been looking into how plants adjust to river

REETH AND DISTRICT GAZETTE LTD

catchments polluted by historical mining, as we have in Swaledale and Arkengarthdale. Read the full article on The Guardian website here: <https://tinyurl.com/4y9fpc2b>

Free Willow ID sessions with Yorkshire Dales Millennium Trust

The Yorkshire Dales Millennium Trust is hosting three free willow ID sessions throughout July, giving you the opportunity to practise your tree ID skills by getting to grips with a range of rarer upland species and hybrids. Everyone is welcome at these sessions and no previous ID skills are required:

- Tuesday 14th July @ Malham
- Thursday 16th July @ Kettlewell
- Tuesday 21st July @ Gunnerside

Please email eva.irving@ydmf.org to book your place

National Meadows Day/Annual Potting On event

Sustainable Swaledale will be holding its annual Potting On event as part of the National Meadows Day activities at Hazel Brow Farm on Saturday 4th July. View full details and book your place in advance online at hazelbrownfarm.org/bookings.

What is potting on? Any seedlings that have germinated from the seeds collected locally over the last 1-2 years will be extracted from their boxes and planted into root trainers, where they will grow on into saplings large enough to plant out. (We will also be doing the same process with locally collected willow cuttings). The root trainers will then be placed into one of two tree nursery creches located at Hazel Brow.

Got boxes with seedlings ready to pot on? Please let Margaret know at info@sustainableswaledale.org so that she can gauge how many bags of compost mix and root trainers are needed.

Had a box for two years and nothing has happened? We would appreciate having them returned for reuse in the autumn.

Liz and Margaret

Sustainable Swaledale Group

Find out more and join in...

Email: info@sustainableswaledale.org

Phone: 01748 886 381 (Secretary)

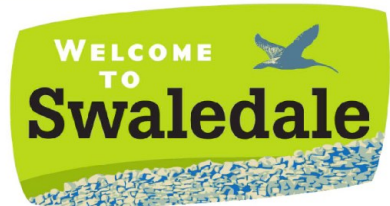
Facebook Group:

[Sustainable Swaledale](#)

Website:

www.sustainableswaledale.org

Sign up to our free newsletters, and choose to support us as a member for £10 (£5 concessions) per year.



SABF

**Swaledale & Arkengarthdale
Business Forum**

**Members, get assistance to
enhance or update your entry**

**Non-Members, send your
details for a basic entry**

**visit our website
www.swaledale.net**

Packed with useful information for visitors and locals alike, including a comprehensive services directory

REETH AND DISTRICT GAZETTE LTD

Reeth Memorial Hall



Reeth Memorial Hall

Tickets for concerts are available from Reeth PO or phone Glen Steward (01748 884989) or visit www.reethmemorialhall.weebly.com - tickets $\frac{1}{2}$ price u16s.

All concerts 8pm unless otherwise stated - doors 7.30pm

Glen Steward

We are very pleased to report that during August our toilet facilities are to be updated and significantly improved. We are making big improvements to heating and insulation in that part of the hall and also creating an additional cubicle in the ladies

This has been made possible with the financial support of



YORKSHIRE DALES
National Park Authority
Sustainable Development Fund

and also by you buying tickets to come to our events.



Friday 10th July - Everlys & Friends Tribute Show

A spectacular two-hour show by the UK's Number One tribute to The Everly Brothers plus special guest tributes to Hank Marvin, Buddy Holly and Jerry Lee Lewis by Ivan Marvin, Buddy Walker Pete Gill.

Tickets **£18** (£20 door).

Saturday 18th July - Sherburn, Bartley, Sanders

Soul-stirring English and Celtic songs, exhilarating tunes and quick-witted banter from Chris Sherburn, Denny Bartley and Emily Sanders on concertina, guitar and strings.

Tickets **£17** (£19 door).

The Everly Brothers - Hank Marvin - Buddy Holly - Jerry Lee Lewis

8pm Friday 10th July

in Reeth Memorial Hall

Tickets £18 in advance; £20 on the door
(u 16s half price)

on sale at Reeth Post Office

or contact 01748-884989;

email: memorialhall@swaledale.org

THE HEALING COLLECTIVE

Encouraging health and well being

with a range of therapies including

* Reiki * Counselling * Bach Remedies *

* EFT (tapping) * Indian Head Massage *

Treatments for animals also available.

Coach House, Berry's Farm Shop & Café,
Swinithwaite, DL8 4UH. t.0845 474 2383

info@healingcollective.co.uk

www.healingcollective.co.uk





The Bridge Inn, Grinton

The Bridge Inn-Grinton is a charming old coaching inn, situated on the banks of the River Swale. We offer a warm welcome to families and dogs, serving, hearty pub food and cask ales.

With en suite accommodation available, our guests can enjoy various activities including playing traditional board games and darts.

Open 12pm until closing time. Serving food until 8:45 pm. It is recommended to book in advance to avoid disappointment.

Booking is available directly or on [Booking.com](https://www.booking.com). For more information, call 01748 884224 or visit our Facebook page [The Bridge Inn-Grinton](#).



Swaledale Footcare

Meg Squires MCFHP MAFHP

**Clinic Visits at Thornborough Hall Leyburn or
Home Visits Including:**

Toenail Cutting

Corn Treatment

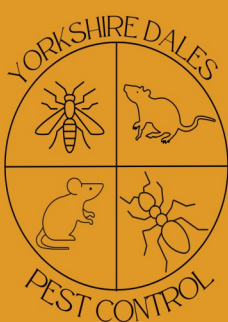
Removal of Hard Skin and Calluses

Treatment of Thickened and Fungal Nails

Phone : 01748 884795 or Mobile: 07929065602

Email meg.e.squires@gmail.com

Member of the British Association of Foot Health Professionals



PEST CONTROL

Don't let pests become a problem, call us right away for a professional, reliable and discreet service.

- Rats / Mice
- Wasps / Insects
- Nuisance birds



☎ 07818 836527

🌐 www.yorkshiredalespestcontrol.com

📱 SCAN ME

Fremington Village Hall

Redecorated and now with its own piano, the Village Hall (known locally as the Sunday School) is available to hire for all kinds of events, from regular classes, talks and community activities, to one-off functions like children's parties, lunches and dinners and special occasions such as wedding receptions and anniversary parties. The Hall has a small kitchen with electric cooker and microwave; toilet facilities including disabled toilet; and a small rear garden.

The Hall is a registered charity run by a small and dedicated volunteer committee. You can book the Hall by phoning or texting the bookings secretary **Carol Witham** on **07783 924827** or by email at c.whitham149@btinternet.com

Wanted—Cottage to Rent

38-year-old composer is looking to rent a remote cottage somewhere in Yorkshire or the Lake District as a composing retreat. My own cottage is currently being renovated extensively, so I'm looking for an inspiring alternative for at least 1-2 years, potentially longer. If the cottage happens to already have a piano in it, that would be a dream, otherwise it should at least be possible for me to bring my upright. I am a very analogue person - the more old-fashioned and basic the better... all I need is a wood-burning stove, a candle, a bed and a desk.... And ideally a beautiful view. Please get in touch if you have any ideas: yoelgamzou787@gmail.com.

Struggling to stay on top of your business finances?

Overwhelmed with paperwork? Struggling with cashflow? Worried about Making Tax Digital for Income Tax?

I can take the stress out of bookkeeping so you can focus on your business.

Bookkeeping (daily, weekly or monthly)

- Catch-up and Year-End Support
- VAT Returns
- Credit Control & Supplier Payments
- Real-Time Reporting
- Software Set-Up & Training



YORKSHIRE DALES
BOOKKEEPING SERVICES



Book a friendly confidential chat with me today

Contact Me



Email: emily@yorkshiredalesbookkeeping.com

Message via Whats App: 07797 730 596

ICB Qualified and Insured.
Practice Licence Number 24213

Diary Dates

July

Sun 5th Jul - Low Row Open Garden, 10.30-4pm, Low Row Institute

Sun 5th Jul - Bellerby Open Gardens 11-4

Sun 5th July - Gunnerside Chapel Midsummer Service 6.30pm

Tues 7th Jul - Heart and Craft Muker Public Hall 10am

Wed 8th Jul - Workout Wednesday, 6.30pm and 7.45pm Low Row Institute, £8 per class

Thurs 9th Jul - Heart and Craft Reeth Memorial Hall 2pm

Fri 10th Jul - Everlys and Friends Tribute Show, Reeth Memorial Hall

Tues 14th Jul - Heart and Craft Low Row Institute 10am

Tues 14th Jul - Heart and Craft Arkengarthdale Hub 2pm

Wed 15th Jul - Workout Wednesday, 6.30pm and 7.45pm Low Row Institute, £8 per class

Thur 16th Jul - TLC@Gunnerside talk by Jane and Rebecca from Cutting Fine who reveal all about a Victorian Afternoon Visiting Dress. 7.30pm Gunnerside Village Hall

Fri 17th Jul - Bric-a-Brac stall on Reeth Green in aid of Christian Aid

Sat 18th Jul - Sherburn, Bartley Sanders, Reeth Memorial Hall

Sat 18th Jul - Mobile Skip on Reeth Green

Sat 18th Jul - Coffee Morning, 10-12 noon, Reeth Evangelical Congregational Church

Tues 21st Jul- Heart and Craft Muker Public Hall 10am

Wed 22nd Jul - Workout Wednesday, 6.30pm and 7.45pm Low Row Institute, £8 per class

Thurs 23rd Jul - Heart and Craft Reeth Memorial Hall 2pm

Sat 25th Jul - Lino Printing Workshop, Swifts, Swallows and Summer, Low Row Institute 9-1pm

Tues 28th Jul - Heart and Craft Low Row Institute 10am

Tues 28th Jul - Heart and Craft Arkengarthdale Hub 2pm

Wed 29th Jul - Workout Wednesday, 6.30pm and 7.45pm Low Row Institute, £8 per class

August

Sat 1st Aug - Yorkshire Day Tea and Cakes, Gunnerside Village Hall 2,30-4,30

Sat 8th Aug - Jazz Night - Saturday 8th August 2026 - The Good Vibes Trio + 2-course evening meal

@ The Station CafeBar, Richmond to book Call 01748 825967 or email reservations@thestation.co.uk

Sat 15th Aug - Coffee Morning, 10-12 noon, Reeth Evangelical Congregational Church

Sat 22nd Aug - Paul Thompson "To Absurdity and Beyond", Reeth Memorial Hall

Sun 30th Aug - Songs of Praise on Reeth Green with Reeth Bras Band, 3pm

September

Sat 5th Sept - Reeth Arts Festival, field next to the Showground

Thurs 24th Sept - TLC@Gunnerside, Making Lavender Babushkas with Sarah Baldwin Cole, 7.30pm Gunnerside Village Hall



SCENICVIEW GALLERY - Reeth

Original Landscape Photography

Showcasing the dramatic beauty of Swaledale, the Yorkshire Dales, and beyond.

- 📍 Right in the heart of Reeth
- 🖼️ Framed and mounted prints, plus greetings cards
- 🖥️ View the full range at:
www.scenicview.co.uk
- 📷 Pop in and explore - dogs welcome

2027 Calendars Now Available

Dales Reyno-Vations



General Building & Maintenance

- Property renovations / Roofing
- Kitchen fitting / Joinery
- Bathroom suites / Tiling
- Painting & Decorating
- Patios / Landscaping / Ground maintenance

Free estimates / Insurance quotes

No Job too small

D Reynoldson

11, Place Hill, Reeth, Richmond
North Yorkshire, DL11 6SD

01748884309 / 07792458801

Email: david.reeth1@outlook.com

R.Foster

Tree and garden maintenance

All aspects of tree work undertaken.

Hedges & shrubs maintained.

Garden tidying. Stump grinding.

Tree & shrub planting.

**Lawn care. Cutting, edging,
scarifying and aeration.**

Gutters cleaned.

Tel Robert on 07870 444360

The Old School Muker

Art Gallery & Craft Centre



Guning Lane, Muker, Swaledale, DL11 6QG
www.theoldschoolmuker.co.uk
Tel: 01748 886155
email: ask@theoldschoolmuker.co.uk